



Bernard Dewagtere

France, SIN LE NOBLE

L'Arlésienne (Suite n°2) – 7. Menuet Bizet, Georges

About the artist

Doctor in musicology, conductor and composer.

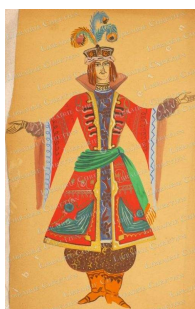
Compositions and arrangements from all eras, in all styles or musical genres and for any instrument or vocal training.

Qualification: PhD Musicology

Associate: SACEM - IPI code of the artist : 342990

Artist page : <https://www.free-scores.com/Download-PDF-Sheet-Music-bernard-dewagtere.htm>

About the piece



Title: L'Arlésienne (Suite n°2) – 7. Menuet

Composer: Bizet, Georges

Arranger: Dewagtere, Bernard

Copyright: Copyright © Bernard Dewagtere

Publisher: Dewagtere, Bernard

Instrumentation: Cello, Piano

Style: Romantic

Bernard Dewagtere on [free-scores.com](https://www.free-scores.com)

LICENSE

This sheet music requires an authorization
- for public performances
- for use by teachers

Buy this license at :

<https://www.free-scores.com//license?p=aTb7yTe5l1>



- listen to the audio
- share your interpretation
- comment
- pay the licence
- contact the artist

Prohibited distribution on other website.

L'Arlésienne (Suite n°2)

7. Menuet

Georges Bizet (1872)
Transc. : Bernard Dewagtere

Andantino quasi Allegretto ♩ = 74

Violoncelle

Violoncelle staff 1: Bass clef, 3/4 time signature, key signature of two flats. The staff contains a melodic line starting with a whole rest, followed by a series of eighth and sixteenth notes. A slur covers the first four measures, and another slur covers the last two. The word *dolce* is written below the staff.

Piano

Piano staff 1: Treble and bass clefs, 3/4 time signature, key signature of two flats. The treble clef has a whole rest. The bass clef has a steady eighth-note accompaniment. The dynamic marking *pp* *leggiero* is written above the treble clef.

Vlc.

Vlc. staff 2: Bass clef, 3/4 time signature, key signature of two flats. The staff continues the melodic line from the first system. A slur covers the first four measures, and another slur covers the last two. Dynamic markings *pp* and *p* are written below the staff.

Piano staff 2: Treble and bass clefs, 3/4 time signature, key signature of two flats. The treble clef has a whole rest. The bass clef continues the eighth-note accompaniment. Dynamic markings *pp* and *p* are written above the treble clef.

Vlc.

Vlc. staff 3: Bass clef, 3/4 time signature, key signature of two flats. The staff continues the melodic line. A slur covers the first four measures, and another slur covers the last two. A dynamic marking *p* is written below the staff.

Piano staff 3: Treble and bass clefs, 3/4 time signature, key signature of two flats. The treble clef has a whole rest. The bass clef continues the eighth-note accompaniment. A dynamic marking *p* is written above the treble clef.

L'Arlesienne (Suite n°2)

2
17

Vlc.

più f

17

più f

23

Vlc.

cres - - cen - - do sf p

23

cres - - cen - - do sf p

28

Vlc.

più f

28

più f

33

Vlc.

poco sf p

33

poco sf p

37

Vlc.

40

Vlc.

44

Vlc.

48

Vlc.

L'Arlésienne (Suite n°2)

4
52

Vlc.

This system contains measures 4 to 52. The Violoncello part (Vlc.) is written in a single staff with a bass clef and a key signature of two flats. It features a continuous eighth-note pattern with accents. The Piano accompaniment is written in two staves (treble and bass clefs) and includes chords and melodic lines in both hands, with accents and slurs.

56

Vlc.

This system contains measures 56 to 60. The Violoncello part continues with the eighth-note pattern. The Piano accompaniment shows a change in texture, with more complex chordal structures and melodic movement in both hands.

60

Vlc.

This system contains measures 60 to 64. The Violoncello part continues with the eighth-note pattern. The Piano accompaniment features a mix of chords and melodic lines, maintaining the rhythmic intensity.

64

Vlc.

This system contains measures 64 to 68. The Violoncello part continues with the eighth-note pattern. The Piano accompaniment includes a dynamic marking of *p* (piano) in the later measures, indicating a softer volume.

68

Vlc.

72

Vlc.

più f

76

Vlc.

poco sf *p*

80

Vlc.

L'Arlésienne (Suite n°2)

6
84

Vlc.

f *pp dolcissimo*

88

Vlc.

f *pp dolcissimo*

91

Vlc.

smor - - zan - - do

94

Vlc.

smor - - zan - - do