



# Bernard Dewagtere

France, SIN LE NOBLE

## L'Arlésienne (Suite n°2) – 7. Menuet Bizet, Georges

### About the artist

Doctor in musicology, conductor and composer.

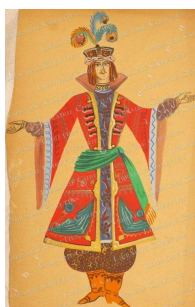
Compositions and arrangements from all eras, in all styles or musical genres and for any instrument or vocal training.

**Qualification:** PhD Musicology

**Associate:** SACEM - IPI code of the artist : 342990

**Artist page :** <https://www.free-scores.com/Download-PDF-Sheet-Music-bernard-dewagtere.htm>

### About the piece



**Title:** L'Arlésienne (Suite n°2) – 7. Menuet

**Composer:** Bizet, Georges

**Arranger:** Dewagtere, Bernard

**Copyright:** Copyright © Bernard Dewagtere

**Publisher:** Dewagtere, Bernard

**Instrumentation:** Alto Saxophone or Clarinet (Eb), piano

**Style:** Romantic

### Bernard Dewagtere on [free-scores.com](https://www.free-scores.com)

#### LICENSE

This sheet music requires an authorization  
- for public performances  
- for use by teachers

**Buy this license at :**

<https://www.free-scores.com//license?p=aHjWfMKdvl>



- listen to the audio
- share your interpretation
- comment
- pay the licence
- contact the artist

Prohibited distribution on other website.

# L'Arlésienne (Suite n°2)

## 7. Menuet

Georges Bizet (1872)

Transc. : Bernard Dewagtere

Andantino quasi Allegretto ♩ = 74

Alto Sax

*dolce*

Piano

*pp* *leggiero*

A. Sax.

*pp* *p*

Piano

*pp* *p*

A. Sax.

Piano

L'Arlesienne (Suite n°2)

A. Sx. 2  
17

*più f*

A. Sx. 23

*cres - - cen - - do sf p*

A. Sx. 28

*più f*

A. Sx. 33

*poco sf p*

A. Sx.

37

A. Sx.

40

*f* *ff*

A. Sx.

44

*ff*

A. Sx.

48

*ff*

L'Arlésienne (Suite n°2)

4  
52

A. Sx.

This system covers measures 4 to 52. It features a single melodic line for the Saxophone (A. Sx.) in the upper staff and a piano accompaniment in the lower staff. The piano part consists of a steady eighth-note accompaniment in the right hand and a bass line in the left hand. The key signature has two flats (B-flat and E-flat), and the time signature is 4/4. The saxophone part is marked with accents (>) and slurs. The piano part includes dynamic markings such as *mf* and *f*.

56

A. Sx.

This system covers measures 56 to 60. The saxophone part continues with a melodic line, ending with a quarter rest in measure 60. The piano accompaniment remains consistent with the previous system. The key signature and time signature are unchanged.

60

A. Sx.

This system covers measures 60 to 64. The saxophone part resumes its melodic line. The piano accompaniment continues with the same rhythmic pattern. The key signature and time signature are unchanged.

64

A. Sx.

This system covers measures 64 to 68. The saxophone part concludes with a melodic phrase. The piano accompaniment features a *p* (piano) dynamic marking in the final measure. The key signature and time signature are unchanged.

A. Sx.

68

A. Sx.

72

*più f*

A. Sx.

76

*poco sf* *p*

A. Sx.

80

L'Arlésienne (Suite n°2)

A. Sx.

6  
84

*f* *pp dolcissimo*

A. Sx.

88

*f* *pp dolcissimo*

A. Sx.

91

*smor - - zan - - do*

A. Sx.

94

*smor - - zan - - do*