



Bernard Dewagtere

France, SIN LE NOBLE

Menuet from "String quintet in E" (G.275 ; Op.11 No.5) Boccherini, Luigi

About the artist

Doctor in musicology, conductor and composer.

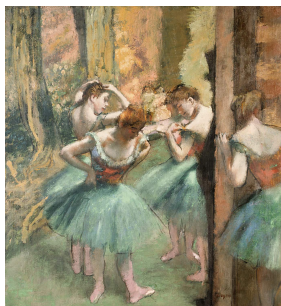
Compositions and arrangements from all eras, in all styles or musical genres and for any instrument or vocal training.

Qualification: PhD Musicology

Associate: SACEM - IPI code of the artist : 342990

Artist page : <https://www.free-scores.com/Download-PDF-Sheet-Music-bernard-dewagtere.htm>

About the piece



Title: Menuet from "String quintet in E" [G.275 ; Op.11 No.5]

Composer: Boccherini, Luigi

Arranger: Dewagtere, Bernard

Copyright: Copyright © Bernard Dewagtere

Publisher: Dewagtere, Bernard

Instrumentation: Violin, Harpsichord

Style: Classical

Bernard Dewagtere on [free-scores.com](https://www.free-scores.com)

LICENSE

This sheet music requires an authorization
- for public performances
- for use by teachers

Buy this license at :

<https://www.free-scores.com//license?p=atOLKxhKps>



- listen to the audio
- share your interpretation
- comment
- pay the licence
- contact the artist

Prohibited distribution on other website.

Menuet du "Quintette à cordes en Mi"

G.275 ; Op.11 No.5

Luigi Boccherini (1743-1805)

Transc. : Bernard Dewagtere

Tempo di Menuetto con un poco di moto

The image displays a musical score for Violin and Clavichord. The score is written in E major (three sharps) and 3/4 time. It begins with a *mf* dynamic marking. The Violin part features a melodic line with slurs and accents, while the Clavichord provides a rhythmic accompaniment with eighth-note patterns. The score is divided into three systems. The first system covers measures 1-3, the second system covers measures 4-6, and the third system covers measures 7-9. The third system includes first and second endings for both instruments.

Menuet du "Quintette à cordes en Mi"

The image displays a musical score for a Minuet from the "String Quintet in E" by Wolfgang Amadeus Mozart. The score is arranged in two systems, each containing a Violin (Vln.) part and a Piano (Clav.) part. The key signature is E major (three sharps: F#, C#, G#) and the time signature is 3/4. The first system covers measures 10 to 12, and the second system covers measures 13 to 15. The third system covers measures 16 to 18, and the fourth system covers measures 19 to 20. The Violin part features a melodic line with various ornaments and phrasing. The Piano part provides a rhythmic accompaniment with a steady eighth-note pattern in the right hand and a more active bass line. The score includes dynamic markings such as accents (>) and a trill (tr) in measure 19. The piece concludes with a repeat sign and two endings in measure 20.