



Mike Magatagan

United States (USA), SierraVista

"By Adam's Fall into Sin" for WoodWind Quartet (BuxWV 183) Buxtehude, Dieterich

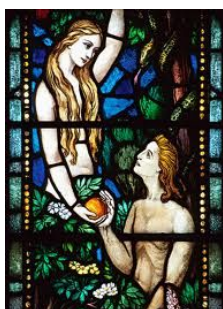
About the artist

I'm a software engineer. Basically, I'm computer geek who loves to solve problems. I have been developing software for the last 25+ years but have recently rekindled my love of music.

Many of my scores are posted with individual parts and matching play-along however, this is not always practical. If you would like individual parts to any of my scores or other specific tailoring, please contact me directly and I will try to accommodate your specific needs.

Artist page : <https://www.free-scores.com/Download-PDF-Sheet-Music-magataganm.htm>

About the piece



Title:	"By Adam's Fall into Sin" for WoodWind Quartet [BuxWV 183]
Composer:	Buxtehude, Dieterich
Arranger:	Magatagan, Mike
Copyright:	Public Domain
Publisher:	Magatagan, Mike
Instrumentation:	Wind Quartet: Flute, Oboe, Clarinet, Bassoon
Style:	Baroque
Comment:	Dieterich Buxtehude (c. 1637 to 1639) was a German-Danish organist and composer of the Baroque period. His organ works represent a central part of the standard organ repertoire and are frequently performed at recitals and in church services. He composed in a wide variety of vocal and instrumental idioms, and his style strongly influenced many composers, including Johann Sebastian Bach. Buxtehude, along with Heinrich Schütz, is considered today to... (more online)

Mike Magatagan on [free-scores.com](https://www.free-scores.com)



- listen to the audio
- share your interpretation
- comment
- contact the artist



"By Adam's Fall into Sin" (Durch Adams Fall Ist Ganz Verderbt)

Dietrich Buxtehude (BuxWV 183)
Arranged for Woodwind Quartet by Mike Magatagan 2013

Allegretto

Flute *mf*

Oboe *mf*

Bb Clarinet *mf*

Bassoon *mp*

F

O

C

B

F

O

C

B

15

Woodwind quartet score for measures 15-20. The score is in G major (one sharp) and 3/4 time. It features four staves: Flute (F), Oboe (O), Clarinet in C (C), and Bassoon (B). Measure 15 starts with a first ending bracket. The Flute part has a trill in measure 18. The Oboe part has a trill in measure 18. The Clarinet and Bassoon parts have a trill in measure 20.

21

Woodwind quartet score for measures 21-26. The score continues in G major and 3/4 time. The Flute part has a trill in measure 23. The Oboe part has a trill in measure 23. The Clarinet and Bassoon parts have a trill in measure 26.

26

Woodwind quartet score for measures 26-31. The score continues in G major and 3/4 time. The Flute part has a trill in measure 29. The Oboe part has a trill in measure 29. The Clarinet and Bassoon parts have a trill in measure 31.

31

Woodwind quartet score for measures 31-36. The score continues in G major and 3/4 time. The Flute part has a trill in measure 34. The Oboe part has a trill in measure 34. The Clarinet and Bassoon parts have a trill in measure 36.

35

Woodwind quartet score for measures 35-39. The score is in G major (one sharp) and 4/4 time. It features four staves: Flute (F), Oboe (O), Clarinet in C (C), and Bassoon (B). Measure 35 has a whole rest for the Flute. Measures 36-39 show active parts for all instruments, with the Flute playing a melodic line and the other instruments providing harmonic support.

40

Woodwind quartet score for measures 40-43. Measure 40 features a trill (tr) in the Flute. Measures 41-43 continue the melodic and harmonic development, with trills also appearing in the Oboe in measure 43.

44

Woodwind quartet score for measures 44-46. Measure 44 has a trill (tr) in the Flute. Measure 45 features a trill (tr) in the Oboe. Measure 46 continues the piece with active parts for all instruments.

47

Woodwind quartet score for measures 47-49. Measure 47 has a trill (tr) in the Flute. Measure 48 features a trill (tr) in the Oboe. Measure 49 concludes the section with a trill (tr) in the Flute. A *rit.* (ritardando) marking is present above the Flute staff in measure 49. The piece ends with a fermata over the final notes of all instruments.