



# Bernard Dewagtere

France, SIN LE NOBLE

## Ebben? Ne andro lontana (Film Diva) (La Wally) Catalani, Alfredo

### About the artist

Doctor in musicology, conductor and composer.

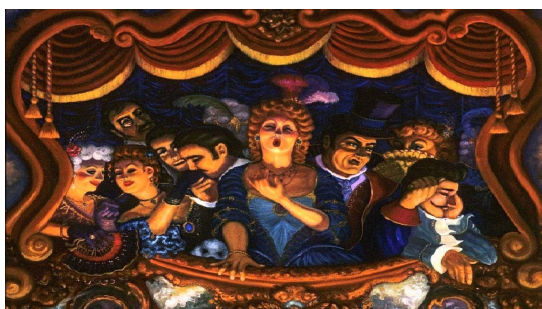
Compositions and arrangements from all eras, in all styles or musical genres and for any instrument or vocal training.

**Qualification:** PhD Musicology

**Associate:** SACEM - IPI code of the artist : 342990

**Artist page :** <https://www.free-scores.com/Download-PDF-Sheet-Music-bernard-dewagtere.htm>

### About the piece



**Title:** Ebben? Ne andro lontana (Film Diva) [La Wally]  
**Composer:** Catalani, Alfredo  
**Arranger:** Dewagtere, Bernard  
**Copyright:** Copyright © Bernard Dewagtere  
**Publisher:** Dewagtere, Bernard  
**Instrumentation:** Voice Soprano and piano  
**Style:** Opera

### Bernard Dewagtere on [free-scores.com](https://www.free-scores.com)

#### LICENSE

This sheet music requires an authorization  
- for public performances  
- for use by teachers

**Buy this license at :**

<https://www.free-scores.com//license?p=akHw0LJyF6>



- listen to the audio
- share your interpretation
- comment
- pay the licence
- contact the artist

Prohibited distribution on other website.

# Ebben? Ne andro lontana

La Wally

Alfredo Catalani (1854 - 1893)

Transc. : Bernard Dewagtere

Andante sostenuto molto

*p*

Soprano

Measures 1-4 of the score. The Soprano part begins with a whole rest, followed by a quarter rest and a quarter note G4. The piano accompaniment starts with a piano (*pp*) texture of eighth notes in the right hand and chords in the left hand. The key signature changes to three sharps (F#, C#, G#) and the time signature changes to 3/4. Dynamics include *p* and *sensibile*.

Eb - - ben?... Ne/an-dro lon -

S

Measures 5-8 of the score. The Soprano part continues with eighth notes and quarter notes. Dynamics include *p* and *poco stent.*

ta - na, co-me va l'e - co del-la pia cam - pa\_\_ na... là, fra la ne\_\_ ve\_\_

Pno

Measures 5-8 of the piano accompaniment. The right hand features a melodic line with *cresc.* markings, while the left hand provides harmonic support with chords and eighth notes. Dynamics include *p* and *col canto*.

S

Measures 9-12 of the score. The Soprano part features a melodic line with *a tempo* and *poco stent.* markings. Dynamics include *f*.

blan - ca;!...\_\_ là fra le nu-bi d'òr;!...\_\_ lad - do - ve la spe-

Pno

Measures 9-12 of the piano accompaniment. The right hand continues with a melodic line, and the left hand provides harmonic support. Dynamics include *p* and *cresc.*

Ebben? Ne andro lontana

2  
13

S

ran - za, la spe - ran - za, è rim - pian - to, è rim - pian - to, ... è do -

Pno

17

S

lor!... — *p* dolcissimo con espressione

O del - la

Pno

*p* *pp* *dolcissimo*

22

S

ma - dre mia ca - sa gio - con - da, la Wal - ly ne/an - drà da - te, da

Pno

Ebben? Ne andro lontana

27 *animando* 3

S  
te lon-tana as - sa - i, e for - se/a te,... e for - se/a

Pno

32 *f con anima*

S  
te... non fa - rà mai più ri - tor - no, nè più la ri - ve - dra

Pno

36 *f ritard* *p* **Tempo primo**

S  
il... mai più... mai più...

Pno

Ebben? Ne andro lontana

4  
39

S

*pp*

Ne/an - dro so - la/e lon -

Pno

*ppp* *dolcissimo*

42

S

*poco stent.*

ta - na co - me l'e - - - co del - la pia cam - pa - - - na...

Pno

*pp*

45

S

*a tempo* *cresc.*

— là, fra la ne - ve bian ca;!... n'an - dro, n'an -

Pno

*cresc.*

48 *f*

S  
dro so - la/e lon - ta \_\_\_\_\_ na...

Pno

51 *f* *ff* e decise

S  
e fra le nu - bi d'ôr;!... Ma fermo è/il

Pno

54 *ff* *sf* *pp*

S  
piè!... n'an-diam che lun - ga è la vi - a, n'an - diam...—

Pno