

# MALOZI MA MOKONZI WA BISO YEZU KRISTU

Ce texte suit en principe l'Evangile de Saint Jean, mais avec quelques passages des autres Evangelistes

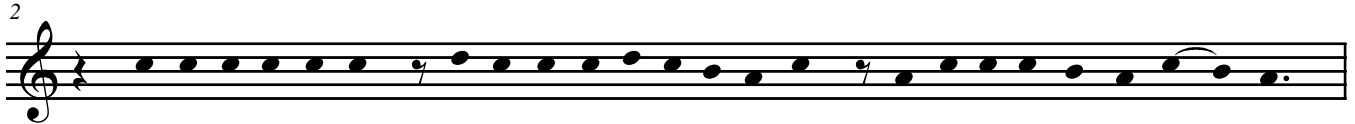
**Comp: Mgr. Joseph MALULA**

Texte complété selon le texte de Saint Jean  
Mélodie revue et modifiée par:  
Père **Hugo TEWES** (Svd)  
Papa **André EMPUNDA**  
Maestro **Didier MISHIBABO**  
Paroisse Notre Dame d'Afrique / Lemba-foire

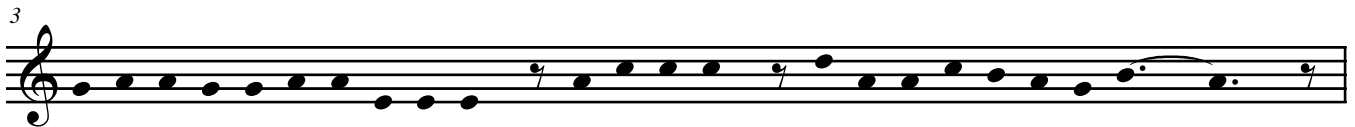
♩ = 45



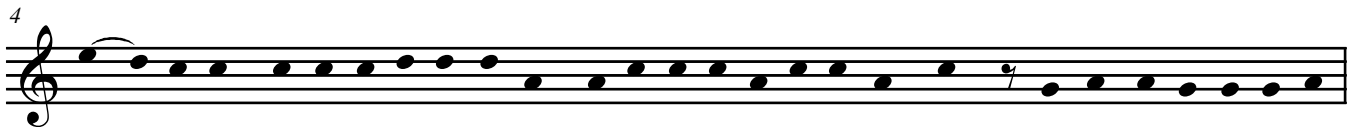
**N:** Ma-lo-zi ma Mo-ko-nzi wa bi-so Ye-zu Kri - tu, lo-ko-la e-ko-ma-mi na Sa-ntu Yo-a - ne.



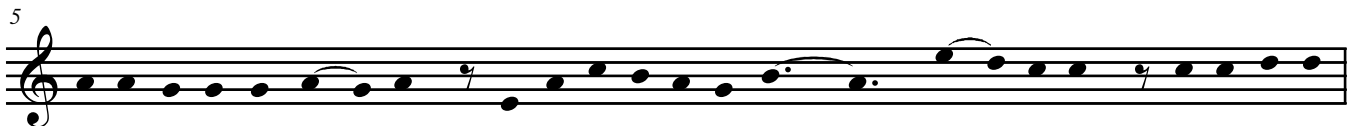
O mi-ko-lo mi-na, Ye-zu na ba-ye-ko-li ba Ye, ba-ka-ti-si mai ma Se - dron,



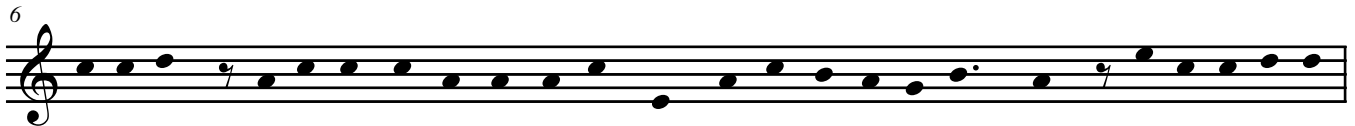
e - si - ka e - za - la - ka e - la - nga, a - yi - nge - li Ye na ba-ye-ko-li ba Ye e.



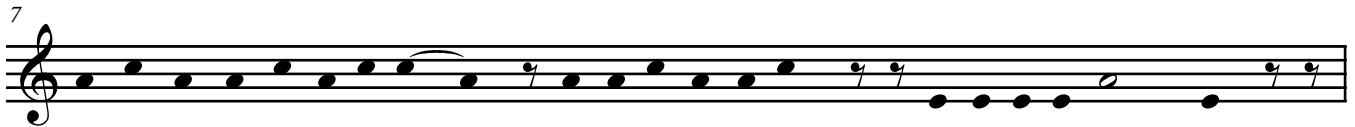
Yu - da-si mo-to a - te - ki Ye-zu, a - ye - ba - ki e - si - ka ya - ngo, za - mbi Ye - zu a - me - se -



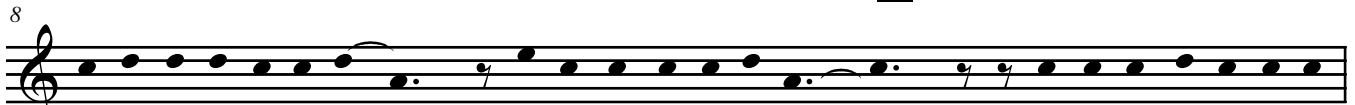
ne - ki ko - ke - nde wa - na na ba - ye - ko - li ba Ye e. Yu - da - si a - ka - ma - ti



ba - so - da ba - si - mbi mii - nda na mbe - li, mpe ma - nge - nda o ma - bo - ko. Ye - zu a - mo - ni



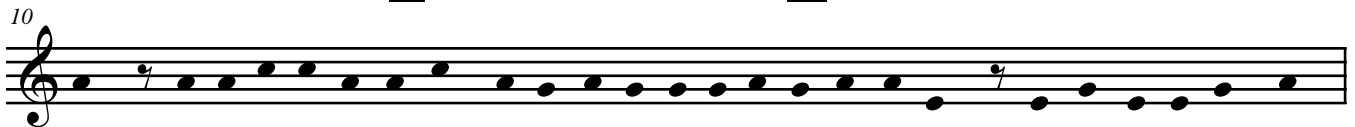
'te nta - ngo ya Ye e - ko - mi \_\_\_\_\_ a - lo - bi na bango: **Y:** Bo - ko - lu - ka na - ni?



**N:** Ba - zo - ngi - si ba - lo - bi \_\_\_\_\_ **Ba:** Ye - zu wa Na - za - re - te. \_\_\_\_\_ **N:** Na si - ma Ye - zu a - lo -



bi na ba - ngo \_\_\_\_\_ **Y:** Nga - i o - yo. **N:** Yu - da - si mo - to a - te - ka Ye -



zu, a - za - la - ki na ba - ngo a - wa Ye - zu a - lo - bi te ngai o - yo, ba - kwei o ma - be - le.



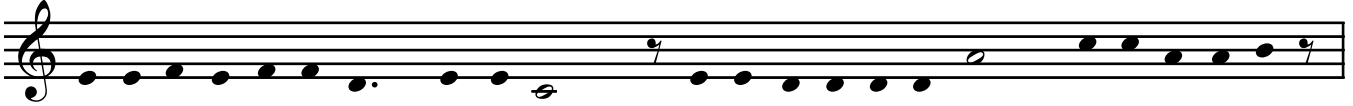
**N:** Ye - zu a - tu - ni ba - ngo li - su - su, **Y:** Bo - ko - lu - ka na - ni? **N:** Ba - zo - ngi - si: \_\_\_\_\_

12



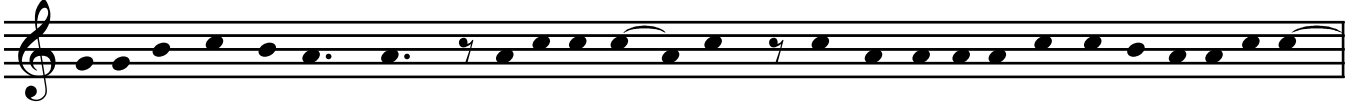
**Ba:** Ye-zu wa Na-za-re-te. \_\_\_\_\_ **N:** Ye-zu a-zo-ngi-si a-lo-bi: \_\_\_\_\_

13



**Y:** Na-lo-bi na bi-no 'te ngai o-yo, so-ko bo-ko-lu-ka ngai, bo-ti-ka ba-ye -

14



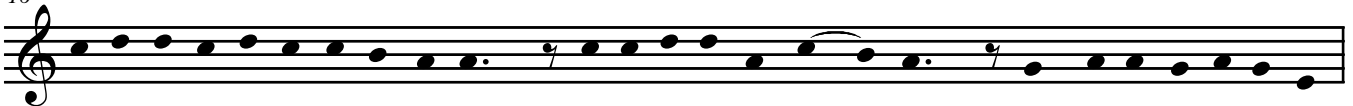
ko-li ba ngai ba ke - nde. **N:** A-sa-li bo - ngo mpo ya ma-lo-ba Ye mo-ko a-lo-ba-ki: \_

15



— Na ba-to ba-nso o-pe-sa-ki ngai, mo-to mo - ko, a - bu - ngi \_\_\_\_\_ té.

16



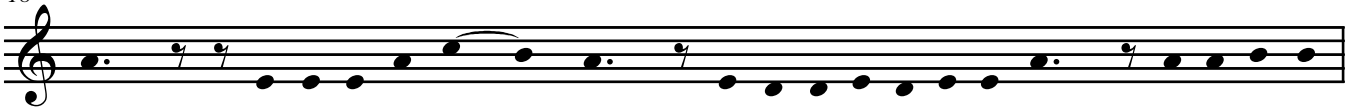
E-mo-ni Si-mo-ni Pe-tro bo-ye, a-bi-mi-si mo-mpa - nga, a - be-ti mo-sa-li wa

17



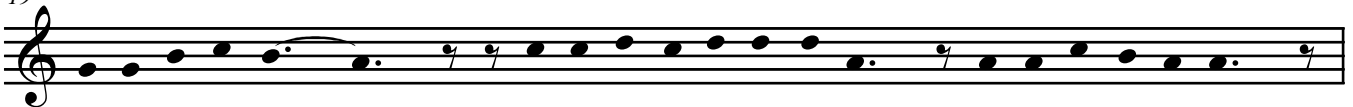
Nga-nga Mo-ko-nzi, a-mo-ka-ti li-to-yi ya mo-ba - li. Ka-si Ye-zu a-lo-bi na Pe-

18



tro: **Y:** Zo-ngi-sa mo-mpa - nga, Nke-ni Ta-ta a-pe-si ngai, o - li - ngi na

19



me-le ya-ngo té. \_\_\_\_\_ **N:** Ba-so-nda ba-si-mpi Ye-zu, ba-ka-ngi Ye si-nga,

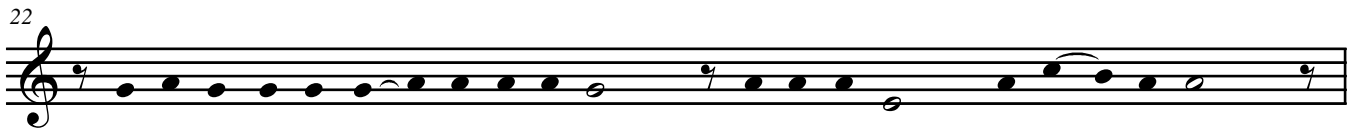
20



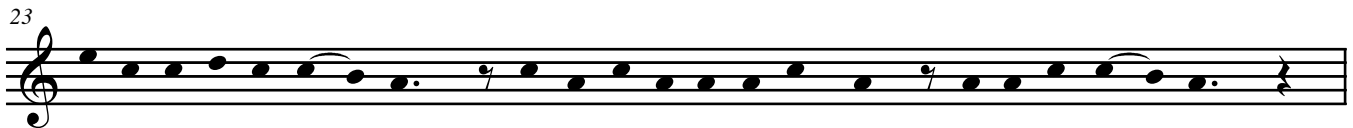
ba-ke-yi na Ye o mbo-ka An - na. An - na, a - za - la - ka bo - ki - lo wa Ka - i -



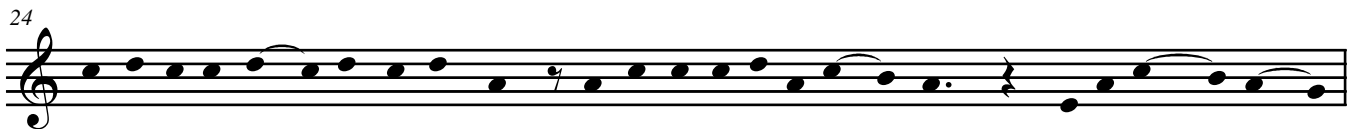
21 fa, Nga-nga Mo-ko-nzi o mo-bu - ya - ngo. Ye mpe-nza a - lo-ba-ki na Ba-Yu-da:



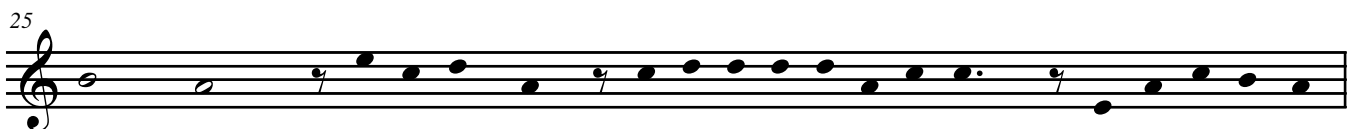
22 Ma-la-mu mo-to mo - ko a-ku-fa, ba-to ba-nso ba-ku - fa té.



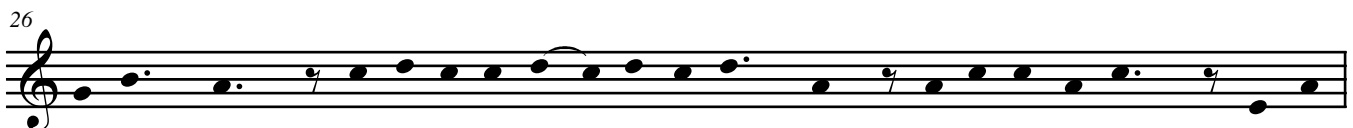
23 Ka-si Si-mo-ni Pe - tro, na mo-ye-ko-li mo-su - su, ba-la-ndi Ye - zu.



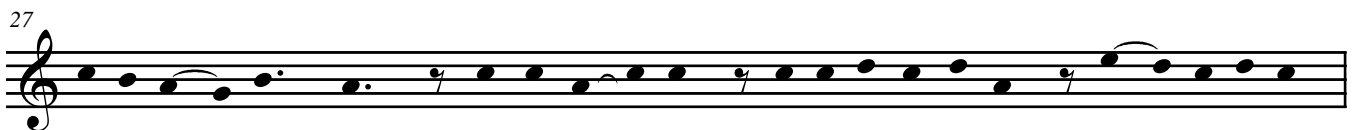
24 Mo-ye-ko-li wa - na mo-su - su a - yi-nge-li o lo-pa - ngo, e-lo-ngo\_\_ na\_\_



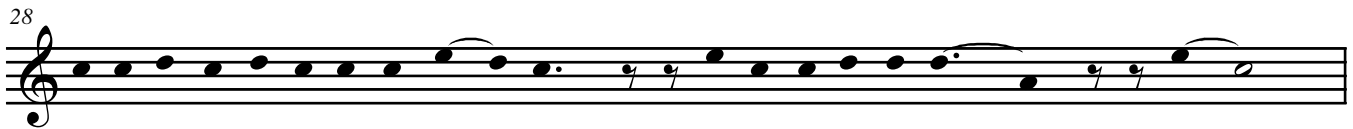
25 Ye - zu. Ka-si Pe - tro, a - ti - ka - li o li - ba-nda o mo-no-ko mwa



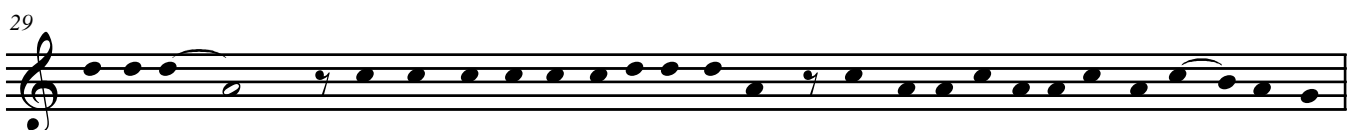
26 lo - pa - ngo. Mo-ye-ko - li wa - na mo-su - su, a - se-ngi nze-la! mpe ba -



27 ko - ti - si\_\_ Pe - tro. Mwa-si mo - ko a - lo - bi na Pe-tro **Mw:** Yo - lo-ko-la



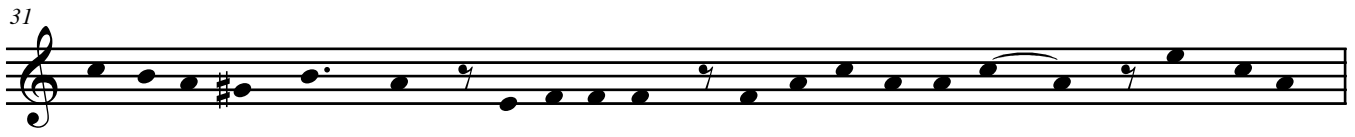
28 o - za - li mo-ye-ko - li wa Ye - zu. **N:** Pe-tro a - zo-ngi - si:\_\_ **Pie:** Té\_\_



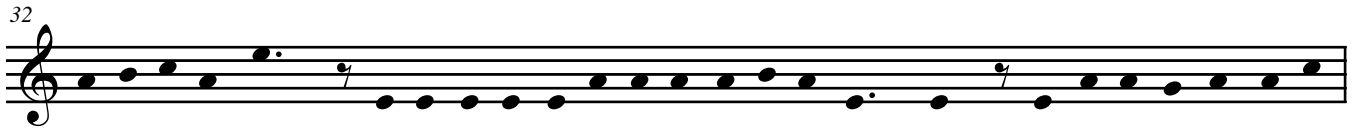
29 nga-i té!\_\_ **N:** Nga-nga Mo-ko-nzi a - tu-ni Ye-zu, mpo ya ba-ye-ko-li na ma-te - ya ma



Ye. \_\_\_\_\_ **N:** Ye- zu a - zo - ngi - si: \_\_\_\_\_ **Y:** Na - te - ya - ki, o Te-mpe-lo,



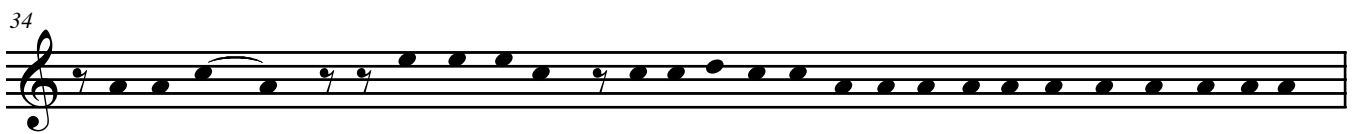
mpe o Si - na - go - ga. Na - te - ya - ki, na mo-bo-mba-mi té; \_\_\_\_\_ mpo ni - ni



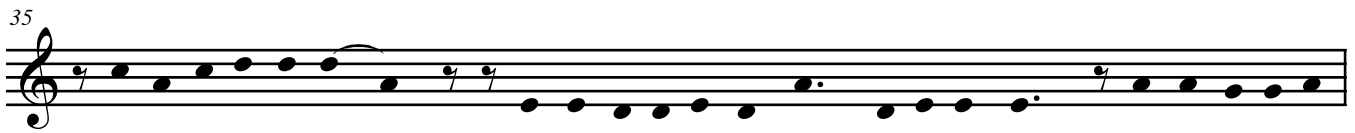
bo-ko-tu-na ngai, tu-na ba-ye ba-yo-ka-ki ma-te-ya ma ngai, ba-ye-bi ya-ngo ma-la



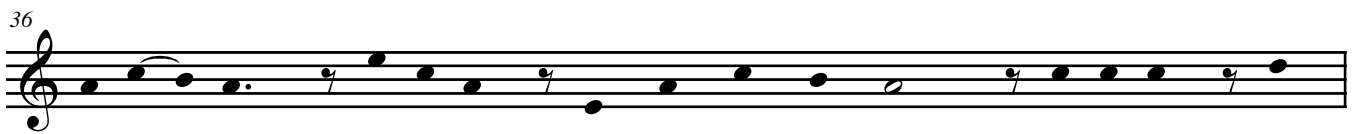
mu pe - nza. **N:** E - lo - bi Ye-zu bo-ye, Mo-sa - li mo-ko a - be - ti Ye-zu mba-ta!



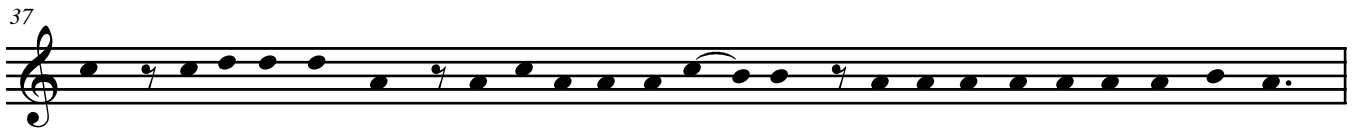
A - lo - bi \_\_\_\_\_ **Mo:** Nde-nge ni-ni o-ko-zo-ngi-sa mo-no-ko bo-ye na Nga-nga Mo-konzi!



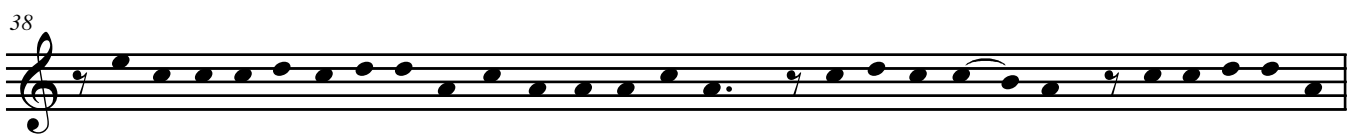
**N:** Ye-zu a - zo - ngi - si: \_\_\_\_\_ **Y:** So - ko na - lo - bi ma - mbe, la - ki - sa ngai, so - ko na - lo - bi



ma - la - mu, mpo ni - ni o - ko - be - te ngai. **N:** Na nsi-ma, An -



na, a - ti - ndi Ye - zu e - pa - yi ya Ka - i - fa, Mo-ko-nzi wa ba-nga-nga Nza-mbe.



Ye-zu a - za - li bo-be-le na nsi-nga o ma-bo-ko. Si-mo-ni Pe - tro a - za - la - ki ko -

39



yo-to mo-to, o li-ba-nda - ya nga-nga Mo-ko-nzi. Mo-sa-li mo-ko a-mo-tu-ni; \_\_\_\_\_

40




**Mo:** Yo \_\_\_\_\_ lo-ko-la, o-za-li mo-ko ya ba-ye-ko-li ba ye té? \_\_\_\_\_ **N:** Pe-tro a-wa-nga-ni a-lo-

41



bi: \_\_\_\_\_ **Pie:** Té! \_\_\_\_\_ nga-i té! \_\_\_\_\_ **N:** Mo-sa-le-li mo-ko wa nga-nga Mo-ko-nzi,

42



nde-ko wa mo-to Pe-tro a-ka-ta-ki li-to - i a-lo-bi: **Mo:** Ngai na-mo-na-ki bi-no na

43



Ye-zu o e-la-nga té? **N:** Pe-tro a-wa-nga-ni li-su - su, mpe nso-so e-le - li.

44



Na nto-ngo saa, ba-lo-ngwi o nda-ko ya Ka-i-fa, ba-ke-i na Ye - zu, e-pa-i

45



ya Mo-ya-nge-li wa e-ko - lo. Ba-ngo mo-ko, ba-yi-nge-li o nda-ko ya Mo-ya-nge-li té,

46



za-mbi e-ki-la e-za-li, mpo \_\_\_\_\_ ya ba - ye ba-li-ngi ko-li-ya li-mpa-ti lya Pa - si-ka.

47



Pi-la-to a-bi-mi a-tu-ni Ba-yu-da; **Pi:** Mpo - ni-ni bo-ko-fu-nda mo-to o - yo?

48



**N:** Ba-zo-ngi-si: — **Ba:** So-ko a-sa-la-ki ma-be té — mbe-le to-yei na-Ye a-wa té.

49



**N:** Pi-la-to a-lo-bi: — **Pi:** Ka-ma-ta-ni ye, bo-sa-mpi-sa ye bi-no mo - ko, lo-ko-

50



la mo-be-ko mwa bi-no mo-ko-ti-nda. **N:** Ba-yu-da ba-zo-ngi si — **Ba:** Bi-so mo-ko to-

51



ko-ki ko-ki-ti-sa mo-to na li-wa — té. **N:** Ba-za-li ko-ko-ki-sa bo - ngo ma-lo-ba ma

52



Ye - zu; a-ye-bi-sa-ki nde-nge ni - ni, a ko-ku-fa. Pi-la-to a-yi-nge-li o nda-

53



ko, a - tu - ni Ye-zu: **Pi:** Yo Mo-ko-nzi wa ba-Yu-da to? **Y:** Ye-zu a - zo-ngi-

54



se-li ye. — **Y:** Yo mo - ko o-lo-bi bo - ngo, to ba-to ba-su-su ba-lo-ba-ki bo - ngo,

55



mpo ya ngai? **N:** Pi - la - to a - lo - bi: — **Pi:** Na-ko-mi nde mo-yu-da, ba-to

56



ya e-ko-lo ya yo na ba-nga-nga ba-ko-nzi ba-ye-i ko-fu-nda yo a - wa, O-sa-li ni-ni?

57



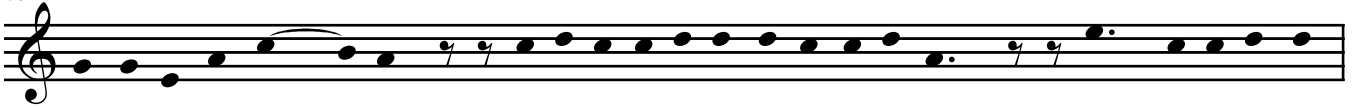
**N:** Ye-zu a-zo-ngi-si: — **Y:** Bo-ko-nzi bwa ngai bo-za-li bwa nse té — so-ko bo-za-la-ki bwa nse

58



e - ye, mbe-le ba-so-da ba ngai, ba-bu-nde-li ngai e - tu - mba, mpo — ba-Yu-

59



da ba-ka-nga ngai — té. **N:** Pi-la-to a-tu-ni Ye-zu li-su-su: **Pi:** Yo o-za-li nde

60



Mo-ko-nzi? **N:** Ye-zu a-zo-ngi-si: — **Y:** O-lo-bi, na-za-li Mo-ko - nzi,

61



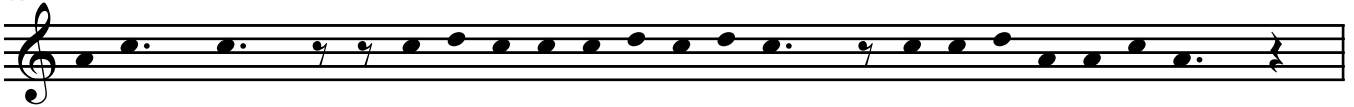
Na-bo-ta-mi, o nse e-ye mpo ya ko-te-ya ma-te-ya ma so - lo, mo-to a-li-ngi ko-ye-ba

62



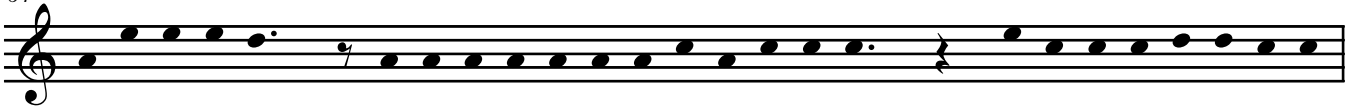
bo-so - lo, a-yo-ka ngai. **N:** Pi-la-to a-tu-ni ye: — **Pi:** Ni-ni wa - na

63



bo-so - lo? **N:** Pi-la-to a-bi-mi li-su-su, a-lo-bi na ba-Yu-da:

64

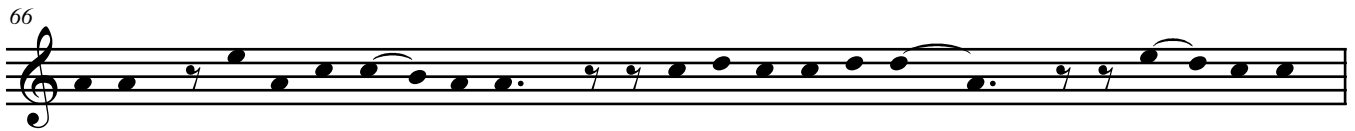


**Pi:** Na-mo-ni nti-na ya-ko-ki-ti-sa mo-to o-yo so-ki té, ka-si na-me-sa-na ko-bi-

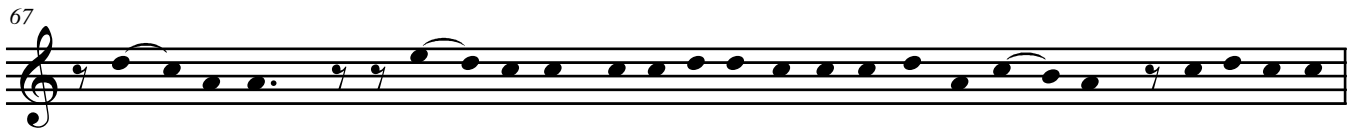
65



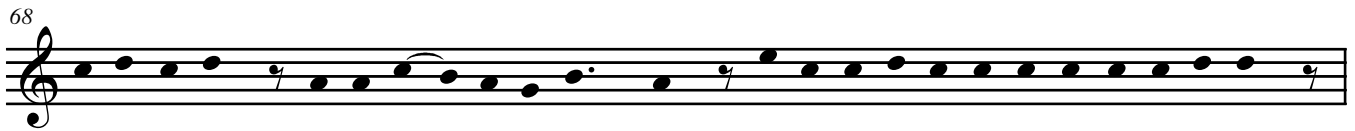
mi-se-la bi-no mo-to mo - ko o bo-lo-ko. o e-ye-nga ya Pa - si-ka; na-ni na-bi -



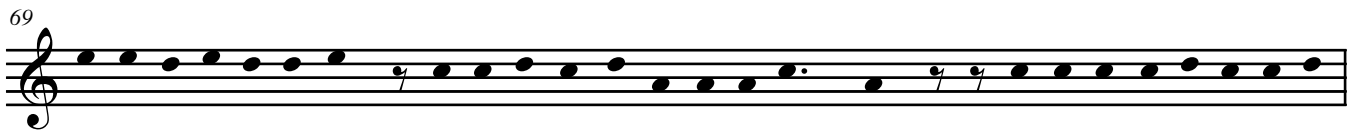
ki-sa? Ye-zu to Ba - ra-bas **N:** Ba-Yu-da ba-nga-ngi: — **Ba:** Ba - ra-bas,



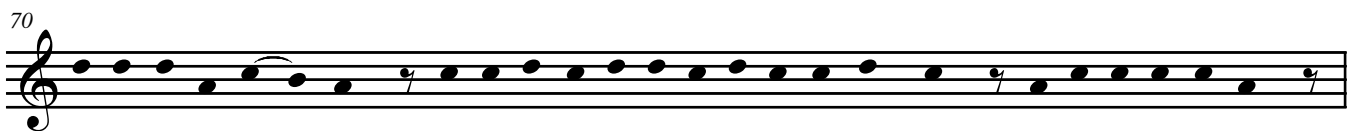
Ba - ra-bas. **N:** Ba - ra-bas a - za - la - ki mo-bo-mi na mo-yi - bi, Pi-la-to a -



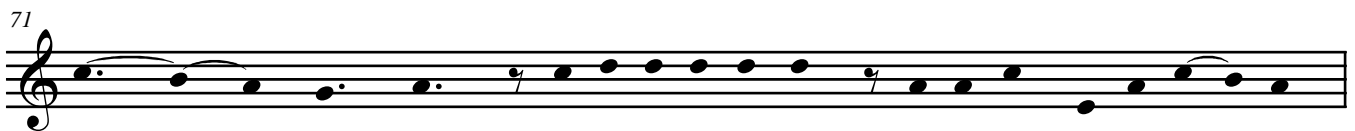
lu - ki nze-la ya-ko-bi - ki-sa Ye - zu. Ka-si Ba-Yu-da na ba-nga-nga-ba-ga-ngi



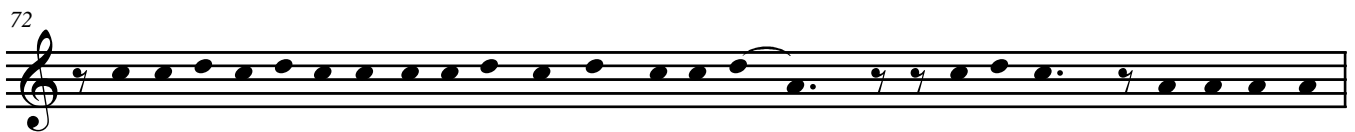
**Ba:** So-ko o - bi - ki - si Ye, to-ko-fu-nda yo na Ka - i - za - ro. **N:** Na si-ma Pi - la - to a - be -



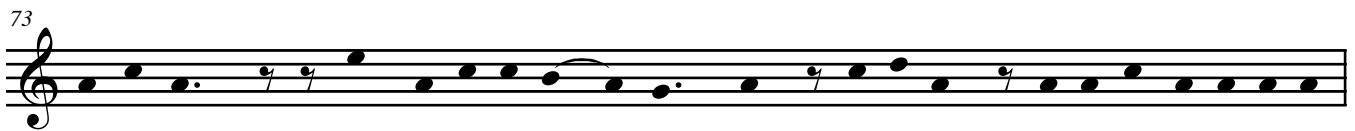
ti - si Ye-zu fi - mbo, Ba-so-da ba-li - ti e - ka - ta ya nzu - be, ba - la - ti - si Ye-zu,



o ————— mo - to. Ba - la - ti - si ye mpe, e - la - mba ya mo - ta - ne.



Ba-ke - i ko-te-le-ma o-bo-so bwa Ye ba-lo-bi: — **Baso:** Lo-sa-ko, Mo-ko-nzi wa



Ba-Yu-da! **N:** Mpe ba-be-ti Ye — mba - ta. Pi - la - to, a - li - ngi ko - ki - ti - sa



Ye-zu té. A - bi - mi li - su - su, a - lo - bi na ba - ngo: — **Pi:** Na-ko-bi-mi-sa



75



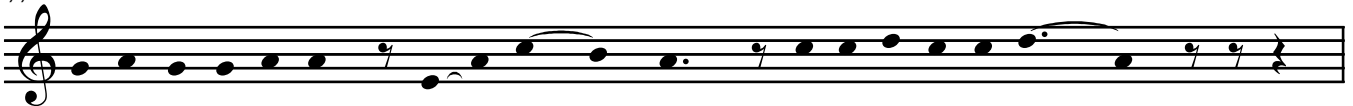
Ye li-su-su a-wa, mpo ya ko-la-ki-sa bi-no 'te, na-mo-ni nti-na ya ko-ki-ti-sa Ye

76



té! — **N:** A-bi-mi-si Ye-zu o li-ba - nda, e-ka-ta ya nzu-be o mo-to, mpe e -

77



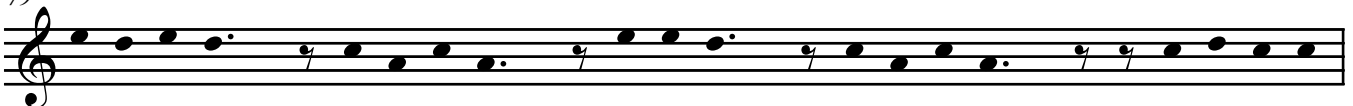
la-mba ya mo-ta - ne o — nzo - to. A - lo - bi na ba - ngo —

78



**Pi:** Bo - ta - la, Mo - to - ye o - yo! **N:** Ba - Yu - da ba - nga - ngi: —

79



**Ba:** O ku - ru - se, o ku - ru - se, a - ku - fa o ku - ru - se! **N:** Pi - la - to a -

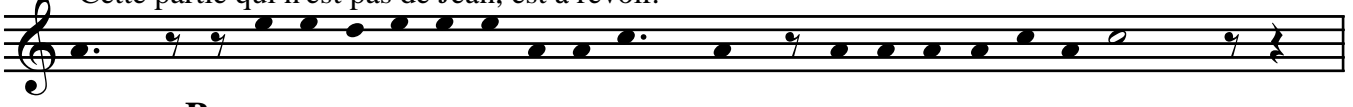
80



tu - ni: — **Pi:** Na - bo - ma Mo - ko - nzi wa bi - no, o ku - ru - se? **N:** Ba - zo - ngi - si: —

81

Cette partie qui n'est pas de Jean, est à revoir.



— **Ba:** Bi - so to - ye - bi se Ka - i - za - ro, Mo - ko - nzi mo - su - su té.

82




**N:** Pi - la - to a - lo - bi: — **Pi:** Na - sa - la ni - ni, na Ye - zu wa Na - za - re - te? **Ba:** O ku - ru -

83




se, o ku - ru - se, a - ku - fa o ku - ru - se! **N:** Pi - la - to a - mo - ni 'te,

84



a - ko - lo - nga so - ki té ko - bi - ki - sa - Ye - zu. E - mo - ni e mo - bu - lu mo - ba -

85



ndi ko - bi - ma mi - ngi. A - ka - ma - ti ma - yi, mpe a - su - ko - li ma - bo - ko, o mi - so ma

86



ba - ngo. Mpe a - ye - bi - si ba - ngo 'te: **Pi:** Li - ka - mbo lya ma - ki - la ya mo - to o - yo,


87



li - ta - li nga - i té, li - ta - li se bi - no mo - ko. **N:** Pi - la - to a - pe - si ba - ngo Ye - zu

Fin de la partie à revoir

88



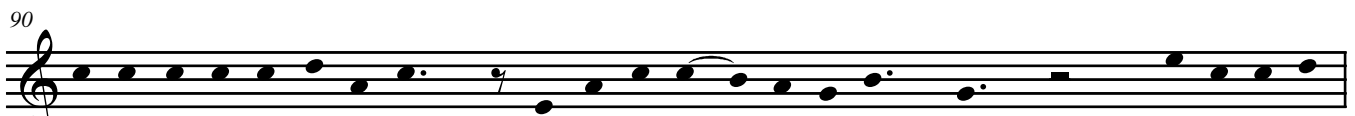
ba - bo - ma Ye, o ku - ru - - - se.

89



**N:** Ye - zu a - me - mi ku - ru - se. A - bu - ti ngo - mba ya Gol - go - tha - , Mpe o - ka -

90




ti ya ba - bo - mi ba - ba - le ba - mo - ba - ki — o ku - ru - se. O li - ko - lo

91



lya ku - ru - se, Pi - la - to a - ko - ma - ki: — Ye - zu wa Na - za - re - te, —

92



Mo - ko - nzi wa Ba - Yu - da. Ba - Yu - da ba - bo - yi ma - lo - ba ma - na, ba - se - ngi Pi - la - to

93



a - bo - ngo-la. Pi - la - to a - zo - ngi - si: \_\_\_\_\_ **Pi:** Na - ko - mi e - si - li se bo -

94



ye. **N:** E - si - li - si ba - so - da ko - ba - ka Ye - zu o ku - ru - se. Ba - ka - ma - ti bi - la - mba bya

95



Ye, ba - ka - ti bya - ngo bi - te - ni bi - ne - i mpo \_\_\_\_\_ 'te so - da mo - ko, mo - ko a - zwa e - te -

96



ni. Ka - si ba - we - li na ze - ke e - la - mba e - ye ya mo - ko - to, ba - so - na - ki na ma - bo -

97



ko. Pe - ne - pe - ne ya ku - ru - se, Ma - ri - a a - te - le - mi \_\_\_\_\_ na Ma - ri - ya Ma - de -

98




le - ni na Yo - a - - ne. Ye - zu a - ta - li Ma - ma wa ye, a - lo - bi: \_\_\_\_\_

99



**Y:** Eh Ma - ma ta - la mwa - na wa yo. **N:** Mpe a - lo - bi na Yo - a -

100



- ne: **Y:** Ta - la Ma - ma wa yo! **N:** Bo - be - le mo - ko - lo mo - na,

101



Ma - ri - a, a - ke - i ko - va - - nda o mbo - ka Yo - a - - ne.

102



**N:** E - ko-mi mi-di, Mo-li - li mo-kwe-i o mo-ki-li mo-bi-mba tee ngo-nga ya i - sa - to.

103



O ngo-nga ya i - sa-to, Ye-zu a - ga-ngi ma-ka-si. A - lo - bi: \_\_\_\_\_

104



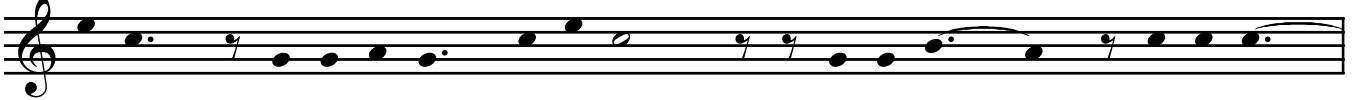
**Y:** E - lo - i, \_\_\_\_\_ E - lo - i, \_\_\_\_\_ la - ma sa - ba - ta - ni!

105



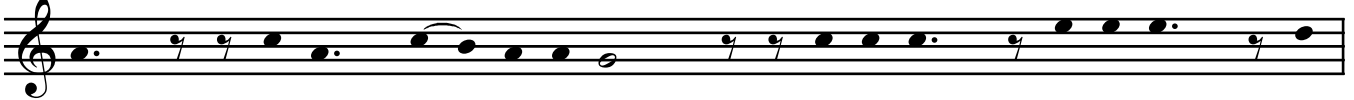
E - lo - i, E - lo - i, la - ma sa - bak - ta - ni!

106



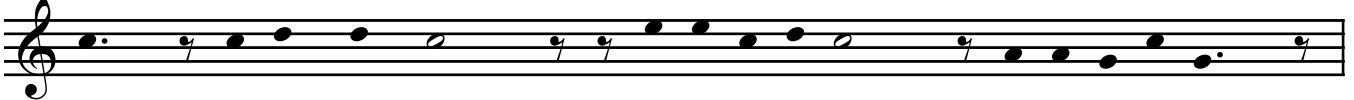
**Ba:** Yo - ka a - ko-bya-nga, E - li - ya. **Y:** E - lo - i, \_\_\_\_\_ E - lo - i, \_\_\_\_\_

107



\_\_\_\_\_ la - ma sa - bak - ta - ni! E - lo - i, E - lo - i, la -

108



ma sa - bak - ta - ni **Ba:** Ti - ka to - ta - la, so - ko E - li - ya,

109



a - ko-ya-ko-ki-ti-sa ye, na ku - ru - se. **N:** E - mo - ni Ye - zu 'te, ma - nso

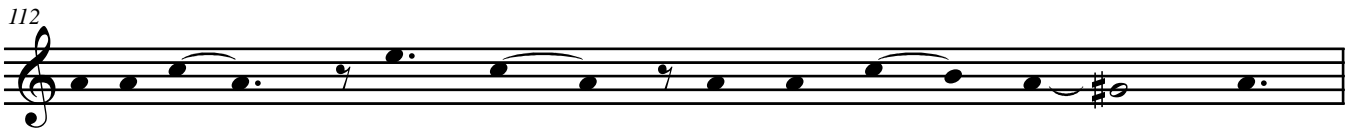
110



ma - sa - le - mi, a - lo - bi: \_\_\_\_\_ **Y:** Mpo-sa ya ma - yi.



**N:** Ba-pe-si Ye-zu ma-sa-nga bo-lo-lo e-si-ka ya ma - yi. Ye-zu a-me-ki ma-ngo,



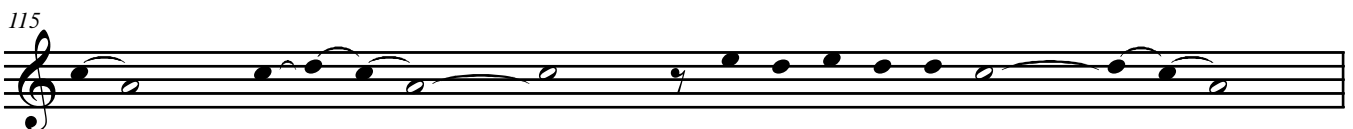
a - lo - bi: \_\_\_\_\_ **Y:** Ma - nso \_\_\_\_\_ ma - ko - ki - sa - - - mi!



**N:** Ye-zu a-gu-mpi mo-to, mpe a-ka - ti mo - te - ma. (Silence)



Ye-zu wa A-bra-ma, wa I-za-ki, wa Ya-ko-bo \_\_\_\_\_ o o



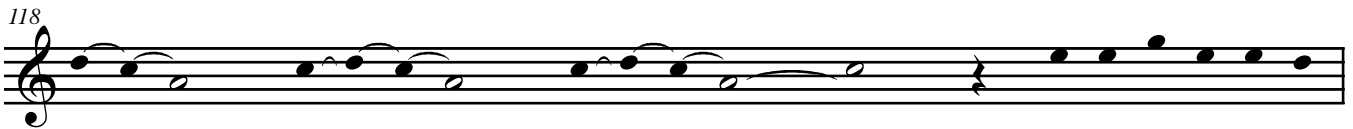
o o o o o o! \_\_\_\_\_ Ye-zu wa Da-vi-di, \_\_\_\_\_



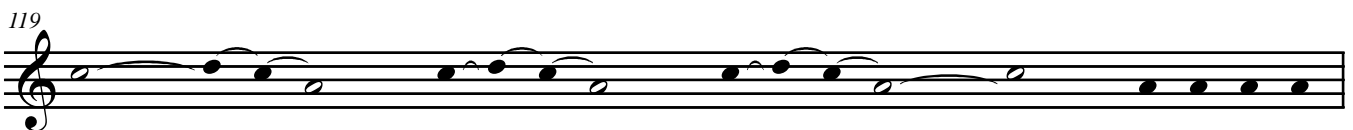
i i i i i i i i! \_\_\_\_\_ Mwa-na wa Ma-ri-a \_\_\_\_\_



a a a a a a a a a! \_\_\_\_\_ Nsu-ka wa ba-pro-fe-ta,

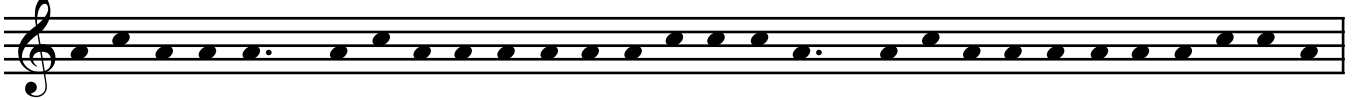


a a a a a a a a a a! \_\_\_\_\_ E-lo-mbe a-we-i-



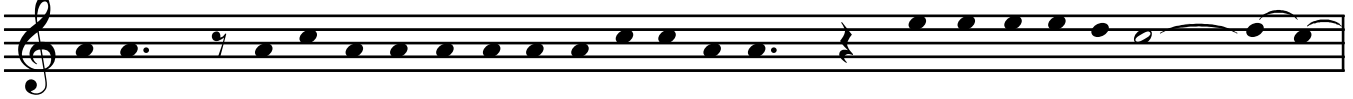
e, \_\_\_\_\_ e e e e, e e e e! \_\_\_\_\_ Mo-ko-nzi wa

120



li-wa na bo-moi, Mo-bi-ki-si wa ba-to ba-ku-fa mi-so, Mo-bi-ki-si wa ba-to ba-ku-fa ma-

121



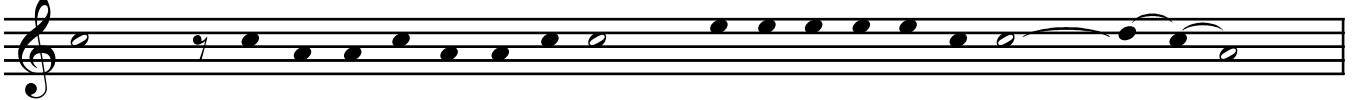
ko-lo, Mo-se-kwi-si wa ba-to ba-ku-fa ka-la, Nga-nga a-we-i e\_\_\_\_\_

122



e, e e e e, e e e e e! Ye-zu o-ku-fi mpo na ni-

123



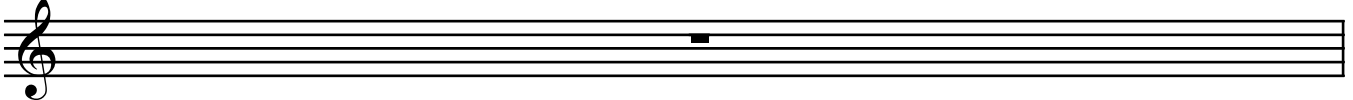
ni? **Tous:** Mpo ya ma-su-mu ma bi-so. Yo-ke-la bi-so ma-wa,\_\_\_\_\_

124



a a a a, a a a a a!\_\_\_\_\_

125

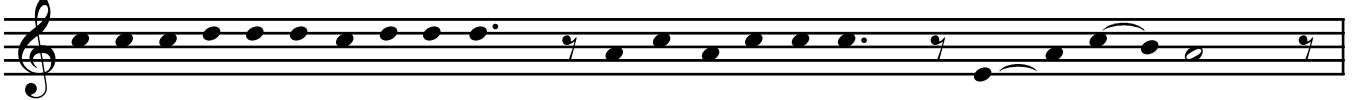


126



**N:** Yo - - ze-fu, wa A-ri-ma-te - a, a-za-la-ki mo-ye-ko-li wa Ye - zu.

127




A-mi-la-ki-sa-ki po-le-le té, za-mpi a-ba-nga-ki Ba - Yu - da.

128



Si - - ka a-wa a-ke-i ko-se-nga Pi-la-to nze-la, mpo\_\_\_\_\_ a-ba-ko-la e-


129



be-mbe ya Ye - zu, O - o - o ku - ru - - - se.\_\_\_\_\_

Detailed description: This block contains the first line of musical notation. It starts with the measure number '129' above the staff. The staff is a single treble clef line with a key signature of one flat. The melody consists of quarter notes and eighth notes, with some notes beamed together. The lyrics 'be-mbe ya Ye - zu, O - o - o ku - ru - - - se.' are written below the staff, with a long horizontal line following the word 'se'.

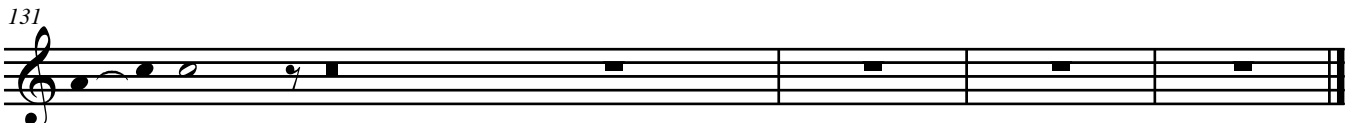
130



Pi - la - to, a - ndi - mi. Bo - ngo, ba - ye - i ko - lo - ngo - la E - be -

Detailed description: This block contains the second line of musical notation. It starts with the measure number '130' above the staff. The melody continues with quarter notes and eighth notes. The lyrics 'Pi - la - to, a - ndi - mi. Bo - ngo, ba - ye - i ko - lo - ngo - la E - be -' are written below the staff.

131



- - mbe.

Detailed description: This block contains the third line of musical notation. It starts with the measure number '131' above the staff. The staff shows a few notes followed by a series of rests, indicating a continuation of the melody. The lyrics '- - mbe.' are written below the staff.