



# Thierry Chauve

France, Chaulgnes

## Réalité

### About the artist

Im a composer since 1990. I play guitar, piano, flute, violin, trumpet and I sing with my keyboard or my guitar. Ive studied guitar, violin, piano and singing in different schools of music. Ive studied solfa at the academy of music. Ive studied composition, harmony and couterpoint at the university. Ive also played in different bands as guitarist, pianist and singer.

**Artist page :** <https://www.free-scores.com/Download-PDF-Sheet-Music-thierry-chauve.htm>

### About the piece



**Title:** Réalité  
**Composer:** Chauve, Thierry  
**Arranger:** Chauve, Thierry  
**Copyright:** Thierry Chauve © All rights reserved  
**Publisher:** Chauve, Thierry  
**Instrumentation:** Voice and Orchestra  
**Style:** Song

### Thierry Chauve on [free-scores.com](https://www.free-scores.com)

#### LICENSE

This sheet music requires an authorization

- for public performances
- for use by teachers

**Buy this license at :**

<https://www.free-scores.com/licence-partition-uk.php?partition=78486>



- listen to the audio
- share your interpretation
- comment
- pay the licence
- contact the artist

# Réalité

Texte de Victor Hugo  
Musique de Thierry Chauve

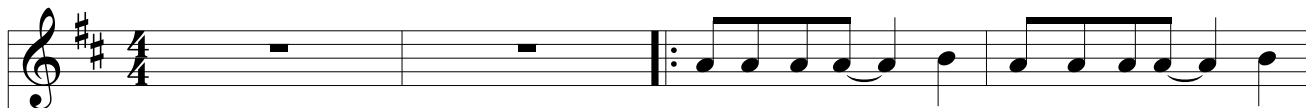
D7M

A7

D7M

B7

Chant



La na-ture est \_\_\_\_\_ par-tout la même, \_\_\_\_\_  
La-val - li - ère \_\_\_\_\_ dans son car-rosse, \_\_\_\_\_

Guitare



5

Em11

A7

D7M

B7



A Go-nes-se comme au Ja-pon. \_\_\_\_\_ Ma-thieu Dom-basle \_\_\_\_\_ est Trip-to - lème ; \_\_\_\_\_  
Pour Lou - is ou pour \_\_\_\_\_ Mars é - pris, \_\_\_\_\_ E - tait tout juste \_\_\_\_\_ aus - si fé - roce \_\_\_\_\_



9

G6

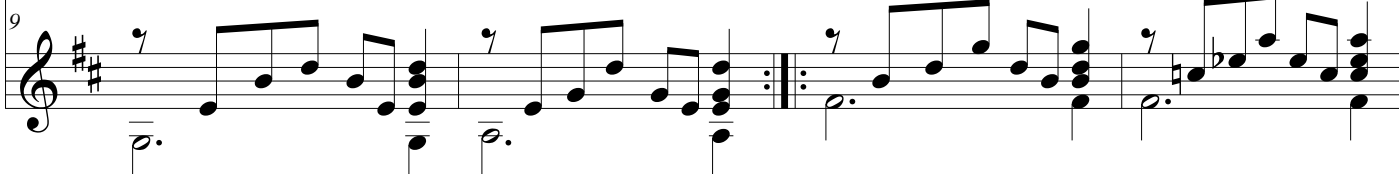
A7sus

G7M

F#dim



U - ne chla-myde \_\_\_\_\_ est un ju - pon. \_\_\_\_\_ O fils et frè-res, \_\_\_\_\_ ô po-ètes, \_\_\_\_\_  
Qu'en son co - quil - la - ge Cy-pris. \_\_\_\_\_ Un ho-quet à Si - lène é - chappe \_\_\_\_\_



13

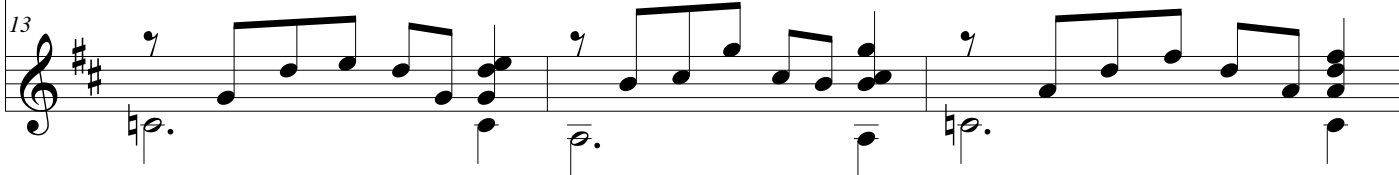
Cadd9

A9

D7



Quand la chose est, \_\_\_\_\_ di - tes le mot. \_\_\_\_\_ So - yez de purs es - prits,  
Par - mi les ro - ses de Poes-tum. \_\_\_\_\_ Quand Ho - race é - ta - le \_\_\_\_\_



16 G C G7+ C7M Dm<sup>6</sup>

et faites. Rien n'est bas quand l'âme est en haut. La vé-ri-té n'a pas  
Pri - ape, Shak-spea - re peut ris - quer Bot-tom

20 G9 C Em7 A7

de bornes. Grâce au grand Pan, dieu bes-tial, Fils, le ré-el

24 D7M G6 Bdim D7M

mon-tre ses cornes Sur le front bleu de l'i-dé-al. La na-ture est  
La-val - li - ère

28 B7 Em11 A7 D7M

par - tout la même, A Go-nes-se comme au Ja-pon. Ma-thieu Dom-basle  
dans son car-rosse, Pour Lou - is ou pour Mars é - pris, E - tait tout juste

The image shows a musical score for the song 'Réalité'. It consists of three systems of music. Each system has a vocal line (treble clef) and a guitar accompaniment line (treble clef). The guitar line includes chords and rhythmic notation. The lyrics are written below the vocal line. The key signature is two sharps (F# and C#). The time signature is not explicitly shown but appears to be 4/4 based on the notation. The score is divided into measures, with measure numbers 16, 20, 24, and 28 marked at the beginning of each system. Chords are indicated above the guitar line: G, C, G7+, C7M, Dm6, G9, C, Em7, A7, D7M, G6, Bdim, D7M, B7, Em11, A7, D7M.

32      B 7                      G 6                      A 7sus                      G 6

est Trip-to - lème ;      U - ne chla-myde      est un ju - pon.        
 aus - si fé - roce      Qu'en son co - quil      -      la - ge Cy - pris.

32

36      D7M

36