



# Thierry Chauve

France, Chaulgnes

## Funk en do majeur

### About the artist

Im a composer since 1990. I play guitar, piano, flute, violin, trumpet and I sing with my keyboard or my guitar. Ive studied guitar, violin, piano and singing in different schools of music. Ive studied solfa at the academy of music. Ive studied composition, harmony and couterpoint at the university. Ive also played in different bands as guitarist, pianist and singer.

**Artist page :** <https://www.free-scores.com/Download-PDF-Sheet-Music-thierry-chauve.htm>

### About the piece



**Title:** Funk en do majeur  
**Composer:** Chauve, Thierry  
**Copyright:** Thierry Chauve © All rights reserved  
**Instrumentation:** Piano and Orchestra  
**Style:** Jazz

### Thierry Chauve on [free-scores.com](https://www.free-scores.com)

#### LICENSE

This sheet music requires an authorization

- for public performances
- for use by teachers

**Buy this license at :**

<https://www.free-scores.com/licence-partition-uk.php?partition=49270>



- listen to the audio
- share your interpretation
- comment
- pay the licence
- contact the artist

# Funk en do majeur

Violon

Thierry Chauve

CMaj7

G

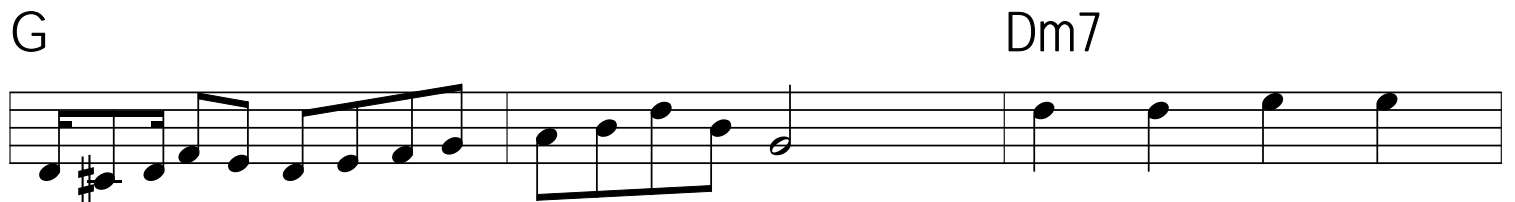
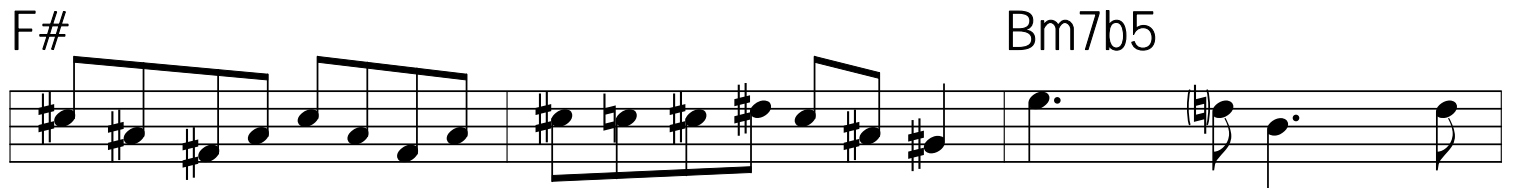
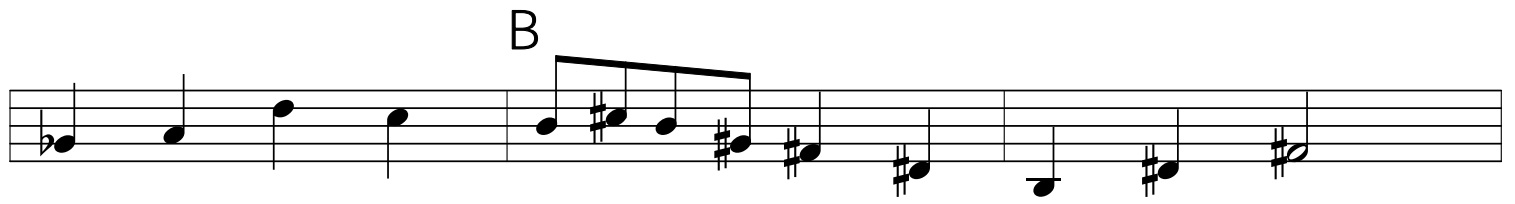
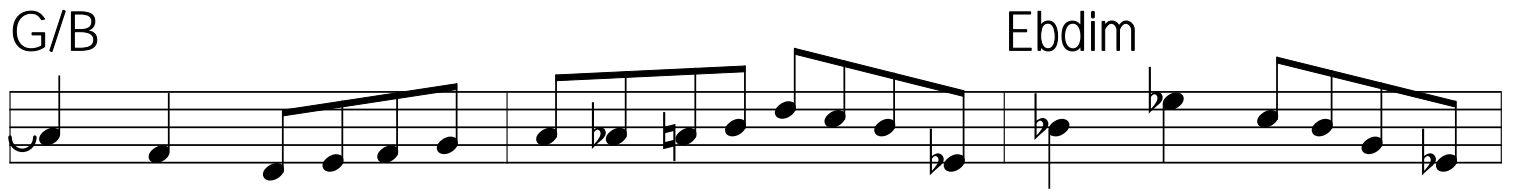
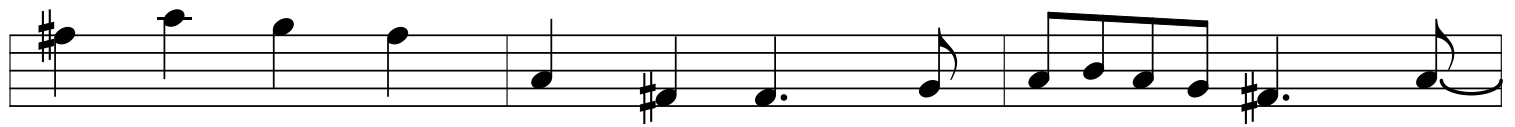
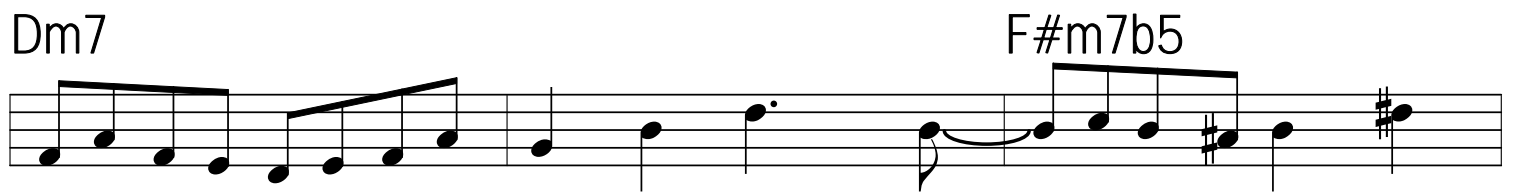
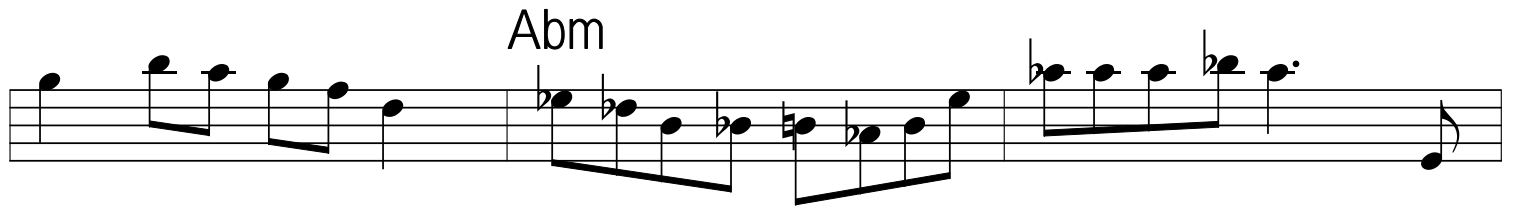
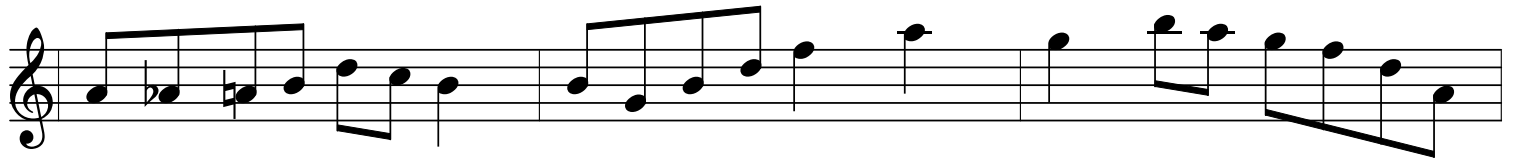
Dm7

G7

Abm

Dm7

G7



G7

The G7 section consists of four staves of music. The first staff begins with a treble clef and a key signature of one sharp (F#). The melody is composed of eighth and quarter notes, with some beamed eighth notes. The second staff continues the melody, featuring a sharp sign on the final note. The third and fourth staves complete the G7 section with similar rhythmic patterns and note values.

Abm

The Abm section consists of two staves of music. The first staff begins with a treble clef and a key signature of two flats (Bb and Eb). The melody is composed of eighth and quarter notes, with some beamed eighth notes. The second staff continues the melody, featuring a sharp sign on the final note. The section concludes with a double bar line.