



Bernard Dewagtere

France, SIN LE NOBLE

Etude op. 10 No3 - Tema (Tristesse) Chopin, Frédéric

About the artist

Doctor in musicology, conductor and composer.

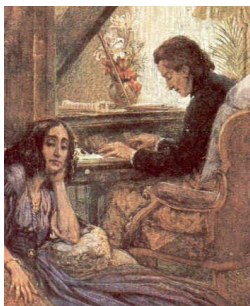
Compositions and arrangements from all eras, in all styles or musical genres and for any instrument or vocal training.

Qualification: PhD Musicology

Associate: SACEM - IPI code of the artist : 342990

Artist page : <https://www.free-scores.com/Download-PDF-Sheet-Music-bernard-dewagtere.htm>

About the piece



Title: Etude op. 10 No3 - Tema [Tristesse]

Composer: Chopin, Frédéric

Arranger: Dewagtere, Bernard

Copyright: Copyright © Dewagtere, Bernard

Instrumentation: Trombone or tuba or euphonium

Style: Romantic

Comment: "In all my life I have never again been able to find such a beautiful melody." - Chopin, on Op. 10, No. 3

Bernard Dewagtere on [free-scores.com](https://www.free-scores.com)

LICENSE

This sheet music requires an authorization
- for public performances
- for use by teachers

Buy this license at :

<https://www.free-scores.com/licence-partition-uk.php?partition=40543>



- listen to the audio
- share your interpretation
- comment
- pay the licence
- contact the artist

Prohibited distribution on other website.

Etude op. 10 No3 – Tema

Tristesse

F. Chopin (1829)

Transc. : Bernard Dewagtere

Trombone
or Tuba
or Euphonium

Measures 1-4 of the score. The music is in bass clef, key of D major (two sharps), and 2/4 time. It begins with a quarter rest, followed by a quarter note D4, then eighth notes E4-F4, G4-A4, B4-C5, and a dotted quarter note D5. The dynamic marking *mf* is placed below the staff.

Measures 5-8 of the score. Measure 5 starts with a quarter rest, followed by eighth notes G4-A4, B4-C5, and a dotted quarter note D5. Measures 6-8 continue with eighth notes G4-A4, B4-C5, and a dotted quarter note D5. The dynamic marking *mf* is present from the previous system. The marking *stretto* is placed above the staff.

Measures 9-12 of the score. Measure 9 starts with a quarter rest, followed by eighth notes G4-A4, B4-C5, and a dotted quarter note D5. Measures 10-12 continue with eighth notes G4-A4, B4-C5, and a dotted quarter note D5. The dynamic marking *mf* is present. The marking *ritenuto* is placed above the staff.

Measures 13-16 of the score. Measure 13 starts with a quarter rest, followed by eighth notes G4-A4, B4-C5, and a dotted quarter note D5. Measures 14-16 continue with eighth notes G4-A4, B4-C5, and a dotted quarter note D5. The dynamic marking *mf* is present. The marking *stretto* is placed above the staff.

Measures 17-19 of the score. Measure 17 starts with a quarter rest, followed by eighth notes G4-A4, B4-C5, and a dotted quarter note D5. Measures 18-19 continue with eighth notes G4-A4, B4-C5, and a dotted quarter note D5. The dynamic marking *mf* is present. The marking *ritenuto* is placed above the staff. Below the staff, there are markings for *f* and *dim.* with wedge-shaped dynamics.

Measures 20-22 of the score. Measure 20 starts with a quarter rest, followed by eighth notes G4-A4, B4-C5, and a dotted quarter note D5. Measures 21-22 continue with eighth notes G4-A4, B4-C5, and a dotted quarter note D5. The dynamic marking *mf* is present. The marking *rallent.* is placed above the staff.

Measures 23-24 of the score. Measure 23 starts with a quarter rest, followed by eighth notes G4-A4, B4-C5, and a dotted quarter note D5. Measure 24 continues with eighth notes G4-A4, B4-C5, and a dotted quarter note D5. The dynamic marking *mf* is present. The marking *p e smorz.* is placed below the staff.