



# Bernard Dewagtere

France, SIN LE NOBLE

## Prelude No 4 in E minor (op. 28) - Largo (Suffocation) Chopin, Frédéric

### About the artist

Doctor in musicology, conductor and composer.

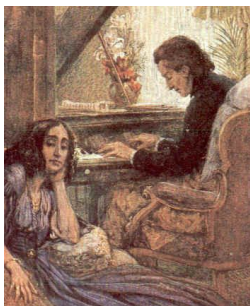
Compositions and arrangements from all eras, in all styles or musical genres and for any instrument or vocal training.

**Qualification:** PhD Musicology

**Associate:** SACEM - IPI code of the artist : 342990

**Artist page :** <https://www.free-scores.com/Download-PDF-Sheet-Music-bernard-dewagtere.htm>

### About the piece



**Title:** Prelude No 4 in E minor (op. 28) - Largo [Suffocation]

**Composer:** Chopin, Frédéric

**Arranger:** Dewagtere, Bernard

**Copyright:** Copyright © Dewagtere, Bernard

**Instrumentation:** Trombone or tuba or euphonium

**Style:** Romantic

**Comment:** Chopin wrote the Op. 28 preludes between 1835 and 1839, partly at Valldemossa, Majorca, where the composer spent the winter of 1838-39 and where he had fled with George Sand and her children to escape the damp Paris weather. Prelude No. 4 "Suffocation" is one of the most famous pieces Chopin wrote. It was played at his funeral, with a slow melody in the right hand and repeated block chords in the left hand (Source : Wikipedia)

### Bernard Dewagtere on [free-scores.com](https://www.free-scores.com)

#### LICENSE

This sheet music requires an authorization  
- for public performances  
- for use by teachers

Buy this license at :

<https://www.free-scores.com/licence-partition-uk.php?partition=40239>



- listen to the audio
- share your interpretation
- comment
- pay the licence
- contact the artist

Prohibited distribution on other website.

# Prelude No 4 in E minor (op. 28) - Largo

## Suffocation

F. Chopin (1839)

Transc. : Bernard Dewagtere

Trombone  
or Tuba  
or Euphonium

Largo

Measures 1-2: Bass clef, common time. Measure 1: quarter note G2, quarter note A2. Measure 2: half note B2. Dynamics: *mf* (under measure 1), *legato* (above measure 2), *espress.* (below measure 2).

3

Measure 3: Bass clef, common time. Half note C3.

6

Measures 4-5: Bass clef, common time. Measure 4: half note D2. Measure 5: half note E2.

9

Measures 6-7: Bass clef, common time. Measure 6: quarter note F2, quarter note G2, quarter note A2, quarter note B2. Measure 7: quarter note C3, quarter note D3.

12

Measures 8-11: Bass clef, common time. Measure 8: quarter note E2, quarter note F2, quarter note G2, quarter note A2. Measure 9: quarter note B2, quarter note C3, quarter note D3, quarter note E3. Measure 10: quarter note F3, quarter note G3, quarter note A3, quarter note B3. Measure 11: quarter note C4, quarter note D4. Dynamics: *mf* (under measure 8), *f* (under measure 10).

15

Measures 12-14: Bass clef, common time. Measure 12: quarter note E3, quarter note F3, quarter note G3, quarter note A3. Measure 13: quarter note B3, quarter note C4, quarter note D4, quarter note E4. Measure 14: quarter note F4, quarter note G4, quarter note A4, quarter note B4. Dynamics: *f* (under measure 12), *f* (under measure 14).

18

Measures 15-17: Bass clef, common time. Measure 15: quarter note C4, quarter note D4, quarter note E4, quarter note F4. Measure 16: quarter note G4, quarter note A4, quarter note B4, quarter note C5. Measure 17: quarter note D5, quarter note E5, quarter note F5, quarter note G5. Dynamics: *dim.* (under measure 15), *mf* (under measure 16).

21

Measures 18-20: Bass clef, common time. Measure 18: quarter note G4, quarter note A4, quarter note B4, quarter note C5. Measure 19: quarter note D5, quarter note E5, quarter note F5, quarter note G5. Measure 20: quarter note A5, quarter note B5, quarter note C6, quarter note D6. Dynamics: *mf* (under measure 18).

24

Measures 21-23: Bass clef, common time. Measure 21: quarter note E5, quarter note F5, quarter note G5, quarter note A5. Measure 22: quarter note B5, quarter note C6, quarter note D6, quarter note E6. Measure 23: quarter note F6, quarter note G6, quarter note A6, quarter note B6. Dynamics: *p* (under measure 21), *smorz.* (under measure 23).