



Faivre Christian

France, BISCHHEIM

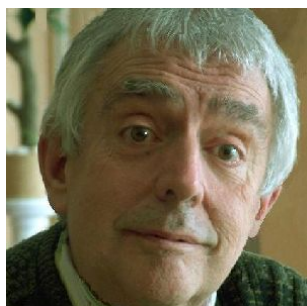
Magellan 3

About the artist

All styles composer

Artist page : <https://www.free-scores.com/Download-PDF-Sheet-Music-christian-faivre.htm>

About the piece



Title: Magellan 3
Composer: Christian, Faivre
Copyright: Copyright © Faivre Christian
Instrumentation: Orchestra
Style: Modern classical

Faivre Christian on [free-scores.com](https://www.free-scores.com)



This work is not Public Domain. You must contact the artist for any use outside the private area.



- listen to the audio
- share your interpretation
- comment
- contact the artist



Magellan

Premier tour du Monde 1519-1522

Poème symphonique



Troisième partie : La Route des Epices

Christian Faivre

1 1 - La traversée ♩ = 120 2 3 4

Chitarone

Percussions de Polynésie

Trompettes 1-2

Cors 1-2

Trombones 1-2

Timbales 1-2

Violons 1-2

Alto

Violoncelles

Contrebasses

Detailed description: This is a page of a musical score for the symphonic poem 'Magellan' by Christian Faivre. The page is titled 'Troisième partie : La Route des Epices' and '1 - La traversée'. The tempo is marked as ♩ = 120. The score is in 3/4 time and consists of 4 measures. The instruments listed are Chitarone, Percussions de Polynésie (two staves), Trompettes 1-2, Cors 1-2, Trombones 1-2, Timbales 1-2, Violons 1-2 (two staves), Alto, Violoncelles, and Contrebasses. The Chitarone part has a melodic line in the treble clef and a bass line in the bass clef. The Percussions de Polynésie part consists of two staves with rhythmic patterns. The Trompettes, Cors, Trombones, and Timbales parts are mostly silent, indicated by rests. The Violons 1-2 part has a melodic line in the treble clef. The Alto, Violoncelles, and Contrebasses parts are mostly silent, indicated by rests.

5 6 7 8

Chitarone

Percussions de Polynésie

Trompettes 1-2

Cors 1-2

Trombones 1-2

Timbales 1-2

Violons 1-2

Alto

Violoncelles

Contrebasses

9 10 11 12

Chitarone

Percussions de Polynésie

Trompettes 1-2

Cors 1-2

Trombones 1-2

Timbales 1-2

Violons 1-2

Alto

Violoncelles

Contrebasses

Detailed description of the musical score: The score is arranged in a grand staff format with seven systems. The first system is for Chitarone, with a treble clef and a bass clef. The second system is for Percussions de Polynésie, with two staves. The third system is for Trompettes 1-2, Cors 1-2, and Trombones 1-2, with a treble clef and two bass clefs. The fourth system is for Timbales 1-2, with a bass clef. The fifth system is for Violons 1-2, Alto, Violoncelles, and Contrebasses, with a treble clef, an alto clef, and two bass clefs. The music is in 3/4 time and consists of four measures. Measure 9 shows the Chitarone playing a quarter note G4, followed by a quarter note F4, and a dotted quarter note E4. The other instruments have rests. Measure 10 shows the Chitarone playing a dotted quarter note D4. Measure 11 shows the Chitarone playing a dotted quarter note C4. Measure 12 shows the Chitarone playing a dotted quarter note B3. The Percussions de Polynésie, Trompettes 1-2, Cors 1-2, Trombones 1-2, Timbales 1-2, and Contrebasses have rests in all measures. The Violons 1-2, Alto, and Violoncelles have rests in all measures.

13 14 15 16

Chitarone

Percussions de Polynésie

13 14 15 16

Trompettes 1-2

Cors 1-2

Trombones 1-2

13 14 15 16

Timbales 1-2

13 14 15 16

Violons 1-2

Alto

Violoncelles

Contrebasses

Detailed description of the musical score: The score is divided into four systems, each covering measures 13, 14, 15, and 16. The first system is for the Chitarone, with a treble clef and a bass clef. The second system is for Percussions de Polynésie, consisting of two staves with a common time signature. The third system includes Trompettes 1-2 (treble clef), Cors 1-2 (bass clef), and Trombones 1-2 (bass clef). The fourth system includes Timbales 1-2 (bass clef), Violons 1-2 (two staves with treble clefs), Alto (bass clef), Violoncelles (bass clef), and Contrebasses (bass clef). The Chitarone part features melodic lines in both hands, while the Percussions de Polynésie part has a rhythmic pattern. The brass and woodwind parts are mostly silent, indicated by rests. The string parts (Violons, Alto, Violoncelles, Contrebasses) play a simple harmonic accompaniment.

17 18 19 20 *Da Capo*

Chitarone

Percussions de Polynésie

Trompettes 1-2

Cors 1-2

Trombones 1-2

Timbales 1-2

Violons 1-2

Alto

Violoncelles

Contrebasses

Detailed description of the musical score: The score is arranged in a system with seven staves. The Chitarone part (measures 17-20) has a treble clef and a bass clef. Measures 17-19 show a melodic line in the treble clef and a bass line in the bass clef. Measure 20 features a final chord in the treble clef and a bass line. The Percussions de Polynésie part consists of two staves with rhythmic markings (short horizontal lines) in measures 17-20. The Trompettes 1-2, Cors 1-2, Trombones 1-2, Timbales 1-2, Alto, Violoncelles, and Contrebasses parts all show rhythmic markings (short horizontal lines) in measures 17-20. The Violons 1-2 part has a treble clef and shows rhythmic markings in measures 17-19, and a melodic line in measure 20. The 'Da Capo' instruction is written at the end of measure 20.

21 22 23 24

Chitarone

Percussions de Polynésie

Trompettes 1-2

Cors 1-2

Trombones 1-2

Timbales 1-2

Violons 1-2

Alto

Violoncelles

Contrebasses

Detailed description of the musical score: The score is divided into four measures (21-24). The Chitarone part (measures 21-24) features a melody in the treble clef and a bass line in the bass clef. The Percussions de Polynésie part consists of two staves with rhythmic patterns indicated by short horizontal lines. The Trompettes 1-2, Cors 1-2, Trombones 1-2, and Timbales 1-2 parts are represented by staves with short horizontal lines, indicating rests or specific rhythmic markings. The Violons 1-2 part has two staves with a melody in the treble clef and a bass line in the bass clef. The Alto, Violoncelles, and Contrebasses parts are represented by staves with short horizontal lines, indicating rests or specific rhythmic markings.

25 26 27 28

Chitarone

Percussions de Polynésie

Trompettes 1-2

Cors 1-2

Trombones 1-2

Timbales 1-2

Violons 1-2

Alto

Violoncelles

Contrebasses

Detailed description of the musical score: The score is organized into systems. The first system (measures 25-28) shows the Chitarone part with a melody in the treble clef and a bass line in the bass clef. The Percussions de Polynésie part consists of two staves with rhythmic marks. The brass section (Trompettes 1-2, Cors 1-2, Trombones 1-2) and Timbales 1-2 are shown with rests in all measures. The string section (Violons 1-2, Alto, Violoncelles, Contrebasses) shows active notation in measures 25-27, with Violoncelles playing a melodic line and other strings providing harmonic support. In measures 28-29, most instruments have rests, except for the Chitarone and Violoncelles which continue their parts.

29 30 31 32

Chitarone

Percussions de Polynésie

Trompettes 1-2

Cors 1-2

Trombones 1-2

Timbales 1-2

Violons 1-2

Alto

Violoncelles

Contrebasses

Detailed description of the musical score: The score is arranged in a system with seven staves. The first staff is for Chitarone, showing a melodic line in the treble clef and a bass line in the bass clef. The second staff is for Percussions de Polynésie, consisting of two staves with rhythmic notation. The third staff is for Trompettes 1-2 (treble clef), the fourth for Cors 1-2 (bass clef), and the fifth for Trombones 1-2 (bass clef). The sixth staff is for Timbales 1-2 (bass clef). The seventh staff is for Violons 1-2 (treble clef), the eighth for Alto (bass clef), the ninth for Violoncelles (bass clef), and the tenth for Contrebasses (bass clef). Measures 29 and 30 show active notation for the Chitarone and Percussions de Polynésie. Measures 31 and 32 show mostly rests for the brass and woodwind sections, with some activity in the strings and timpani.

33 34 35 36

Chitarone

Percussions de Polynésie

Trompettes 1-2

Cors 1-2

Trombones 1-2

Timbales 1-2

Violons 1-2

Alto

Violoncelles

Contrebasses

Detailed description of the musical score: The score is arranged in a system with seven staves. The top staff is for Chitarone, with a treble clef and a bass clef. It shows notes in measures 34 and 36, with rests in 33 and 35. The second staff is for Percussions de Polynésie, with two staves and rests in all measures. The third staff is for Trompettes 1-2 (treble clef) and Cors 1-2 (bass clef), with rests in all measures. The fourth staff is for Trombones 1-2 (bass clef) with rests in all measures. The fifth staff is for Timbales 1-2 (bass clef) with rests in all measures. The sixth staff is for Violons 1-2 (treble clef), with notes in measures 33, 34, 35, and 36. The seventh staff is for Alto (alto clef), with notes in measures 33, 34, 35, and 36. The eighth staff is for Violoncelles (bass clef), with notes in measures 33, 34, 35, and 36. The ninth staff is for Contrebasses (bass clef), with notes in measures 33, 34, 35, and 36.

37 38 39 40

Chitarone

Percussions de Polynésie

Trompettes 1-2

Cors 1-2

Trombones 1-2

Timbales 1-2

Violons 1-2

Alto

Violoncelles

Contrebasses

Detailed description of the musical score: The score is arranged in a system with seven staves. The top staff is for Chitarone, with a treble clef and a bass clef. It shows a melodic line in the treble and a bass line with a tremolo effect in the first measure. The second staff is for Percussions de Polynésie, with two staves showing rhythmic patterns. The third staff is for Trompettes 1-2, with a treble clef. The fourth staff is for Cors 1-2, with a bass clef. The fifth staff is for Trombones 1-2, with a bass clef. The sixth staff is for Timbales 1-2, with a bass clef. The seventh staff is for Violons 1-2, with two staves in treble clef. The eighth staff is for Alto, with a bass clef. The ninth staff is for Violoncelles, with a bass clef. The tenth staff is for Contrebasses, with a bass clef. Measures 37-40 are indicated at the top of each staff.

41 42 43 44

Chitarone

Percussions de Polynésie

Trompettes 1-2

Cors 1-2

Trombones 1-2

Timbales 1-2

Violons 1-2

Alto

Violoncelles

Contrebasses

Detailed description of the musical score: The score is arranged in a system with eight staves. The Chitarone part (measures 41-44) features a melody in the treble clef and accompaniment in the bass clef. The Percussions de Polynésie part consists of two staves with rhythmic patterns. The Trompettes 1-2, Cors 1-2, Trombones 1-2, and Timbales 1-2 parts are represented by staves with rests. The Violons 1-2 part has two staves, with the upper staff playing a melody and the lower staff playing accompaniment. The Alto, Violoncelles, and Contrebasses parts are represented by staves with rests.

45 46 47 48

Chitarone

Percussions de Polynésie

Trompettes 1-2

Cors 1-2

Trombones 1-2

Timbales 1-2

Violons 1-2

Alto

Violoncelles

Contrebasses

49 50 51 52

Chitarone

Percussions de Polynésie

Trompettes 1-2

Cors 1-2

Trombones 1-2

Timbales 1-2

Violons 1-2

Alto

Violoncelles

Contrebasses

53 54 55 56

Chitarone

Percussions de Polynésie

53 54 55 56

Trompettes 1-2

Cors 1-2

Trombones 1-2

53 54 55 56

Timbales 1-2

53 54 55 56

Violons 1-2

Alto

Violoncelles

Contrebasses

Detailed description of the musical score: The score is arranged in a system with seven staves. The top staff is for Chitarone, showing a melodic line in the treble clef and a bass line in the bass clef. The second staff is for Percussions de Polynésie, consisting of two staves with rhythmic markings. The third staff is for Trompettes 1-2 (treble clef), the fourth for Cors 1-2 (bass clef), and the fifth for Trombones 1-2 (bass clef). The sixth staff is for Timbales 1-2 (bass clef). The seventh staff is for Violons 1-2 (treble clef), with two staves. The eighth staff is for Alto (bass clef). The ninth staff is for Violoncelles (bass clef). The tenth staff is for Contrebasses (bass clef). Measures 53-56 are indicated above the staves.

57 58 59 60

Chitarone

Percussions de Polynésie

Trompettes 1-2

Cors 1-2

Trombones 1-2

Timbales 1-2

Violons 1-2

Alto

Violoncelles

Contrebasses

Detailed description of the musical score: The score is arranged in a system with seven staves. The top staff is for Chitarone, showing a melodic line in the treble clef and a bass line with chords and rests in the bass clef. The second staff is for Percussions de Polynésie, consisting of two staves with rhythmic patterns represented by short horizontal lines. The third staff is for Trompettes 1-2 (treble clef), the fourth for Cors 1-2 (bass clef), and the fifth for Trombones 1-2 (bass clef); all three brass staves show rests. The sixth staff is for Timbales 1-2 (bass clef), also showing rests. The seventh staff is for Violons 1-2 (treble clef), showing a melodic line with rests. The eighth staff is for Alto (bass clef), showing a melodic line with rests. The ninth staff is for Violoncelles (bass clef) and the tenth for Contrebasses (bass clef), both showing rests. Measure numbers 57, 58, 59, and 60 are indicated above the staves.

61 62 63 *1 & 2* 64

Chitarone

Percussions de Polynésie

Trompettes 1-2

Cors 1-2

Trombones 1-2

Timbales 1-2

Violons 1-2

Alto

Violoncelles

Contrebasses

65 66 67 68

Chitarone

Percussions de Polynésie

65 66 67 68

Trompettes 1-2

Cors 1-2

Trombones 1-2

65 66 67 68

Timbales 1-2

65 66 67 68

Violons 1-2

Alto

Violoncelles

Contrebasses

Detailed description of the musical score: The score is arranged in a system with seven staves. The top staff is for Chitarone, showing a melodic line in the treble clef and a bass line in the bass clef. The second staff is for Percussions de Polynésie, consisting of two staves with rhythmic markings. The third staff is for Trompettes 1-2 (treble clef), the fourth for Cors 1-2 (bass clef), and the fifth for Trombones 1-2 (bass clef). The sixth staff is for Timbales 1-2 (bass clef). The seventh staff is for Violons 1-2 (treble clef), the eighth for Alto (bass clef), the ninth for Violoncelles (bass clef), and the tenth for Contrebasses (bass clef). Measures 65-68 are indicated above the staves. The Chitarone part has a consistent rhythmic pattern, while the other instruments have rests or minimal activity.

69 70 71 72

Chitarone

Percussions de Polynésie

Trompettes 1-2

Cors 1-2

Trombones 1-2

Timbales 1-2

Violons 1-2

Alto

Violoncelles

Contrebasses

Detailed description of the musical score: The score is arranged in a system with seven staves. The Chitarone staff (top) has a treble clef and a bass clef, showing rhythmic patterns with eighth and sixteenth notes. The Percussions de Polynésie staff consists of two staves with a common time signature, showing rhythmic patterns with eighth notes. The Trompettes 1-2 staff has a treble clef and shows a rhythmic pattern with eighth notes. The Cors 1-2 staff has a bass clef and shows a rhythmic pattern with eighth notes. The Trombones 1-2 staff has a bass clef and shows a rhythmic pattern with eighth notes. The Timbales 1-2 staff has a bass clef and shows a rhythmic pattern with eighth notes. The Violons 1-2 staff has two staves with a treble clef, showing a rhythmic pattern with eighth notes. The Alto staff has a bass clef and shows a rhythmic pattern with eighth notes. The Violoncelles staff has a bass clef and shows a rhythmic pattern with eighth notes. The Contrebasses staff has a bass clef and shows a rhythmic pattern with eighth notes. The measures are numbered 69, 70, 71, and 72 at the top of each staff.

73 74 75 76

Chitarone

Percussions de Polynésie

Trompettes 1-2

Cors 1-2

Trombones 1-2

Timbales 1-2

Violons 1-2

Alto

Violoncelles

Contrebasses

Detailed description of the musical score: The score is arranged in a system with seven staves. The top three staves (Chitarone, Percussions de Polynésie, and Trompettes 1-2) are grouped together with a brace on the left. The next three staves (Cors 1-2, Trombones 1-2, and Timbales 1-2) are also grouped with a brace. The bottom two staves (Violons 1-2 and Alto) are grouped with a brace. The Violoncelles and Contrebasses staves are at the bottom. Measures 73-76 are indicated above the staves. The Chitarone and Percussions de Polynésie parts consist of a single horizontal line with a small black square in the middle of each measure. The Trompettes 1-2, Cors 1-2, Trombones 1-2, and Timbales 1-2 parts also consist of a single horizontal line with a small black square in the middle of each measure. The Violons 1-2 part has two staves with musical notation: measure 73 has quarter notes G4, A4, B4; measure 74 has a half note G4 followed by a quarter rest; measure 75 has a half note G4 followed by a quarter rest; measure 76 has a half note G4 followed by a quarter rest. The Alto part has one staff with a quarter note G3 in measure 73, a quarter rest in measure 74, a quarter rest in measure 75, and a quarter note G3 in measure 76. The Violoncelles part has one staff with a quarter note G2 in measure 73, a quarter rest in measure 74, quarter notes G2, A2, B2 in measure 75, and a quarter note G2 in measure 76. The Contrebasses part has one staff with a quarter rest in measure 73, a quarter rest in measure 74, a quarter rest in measure 75, and a quarter note G1 in measure 76.

77 78 79 80

Chitarone

Percussions de Polynésie

Trompettes 1-2

Cors 1-2

Trombones 1-2

Timbales 1-2

Violons 1-2

Alto

Violoncelles

Contrebasses

81 82 83 84

Chitarone

81 82 83 84

Percussions de Polynésie

81 82 83 84

Trompettes 1-2

Cors 1-2

Trombones 1-2

81 82 83 84

Timbales 1-2

81 82 83 84

Violons 1-2

Alto

Violoncelles

Contrebasses

85 86 87 88

Chitarone

Percussions de Polynésie

85 86 87 88

Trompettes 1-2

Cors 1-2

Trombones 1-2

85 86 87 88

Timbales 1-2

85 86 87 88

Violons 1-2

Alto

Violoncelles

Contrebasses

89 90 91 92

Chitarone

89 90 91 92

Percussions de Polynésie

89 90 91 92

Trompettes 1-2

Cors 1-2

Trombones 1-2

89 90 91 92

Timbales 1-2

89 90 91 92

Violons 1-2

Alto

Violoncelles

Contrebasses

93 *Dal Segno* Segno (1) 94 95 96

Chitarone

Percussions de Polynésie

Trompettes 1-2

Cors 1-2

Trombones 1-2

Timbales 1-2

Violons 1-2

Alto

Violoncelles

Contrebasses

97 98 99 100

Chitarone

Percussions de Polynésie

97 98 99 100

Trompettes 1-2

Cors 1-2

Trombones 1-2

97 98 99 100

Timbales 1-2

97 98 99 100

Violons 1-2

Alto

Violoncelles

Contrebasses

Detailed description of the musical score: The score is arranged in a system of seven staves. The first staff is for Chitarone, with a treble clef and a bass clef. It shows a melodic line in the treble and a bass line in the bass. The second staff is for Percussions de Polynésie, consisting of two staves with rhythmic markings. The third staff is for Trompettes 1-2, with a treble clef. The fourth staff is for Cors 1-2, with a bass clef. The fifth staff is for Trombones 1-2, with a bass clef. The sixth staff is for Timbales 1-2, with a bass clef. The seventh staff is for Violons 1-2, with two treble clefs. The eighth staff is for Alto, with an alto clef. The ninth staff is for Violoncelles, with a bass clef. The tenth staff is for Contrebasses, with a bass clef. The measures are numbered 97, 98, 99, and 100 at the top of each column.

101 102 103 104

Chitarone

Percussions de Polynésie

Trompettes 1-2

Cors 1-2

Trombones 1-2

Timbales 1-2

Violons 1-2

Alto

Violoncelles

Contrebasses

105 106 107 108

Chitarone

Percussions de Polynésie

Trompettes 1-2

Cors 1-2

Trombones 1-2

Timbales 1-2

Violons 1-2

Alto

Violoncelles

Contrebasses

Detailed description of the musical score: The score is arranged in a system with eight staves. The top staff is for Chitarone, with a treble clef and a bass clef. Measures 105 and 106 show rests in both staves. Measure 107 features a quarter note in the treble and a quarter note with a wavy line in the bass. Measure 108 shows rests. The second staff is for Percussions de Polynésie, with two staves and a treble clef. Measures 105-108 show rests. The third staff is for Trompettes 1-2, with a treble clef. Measures 105-108 show rests. The fourth staff is for Cors 1-2, with a bass clef. Measures 105-108 show rests. The fifth staff is for Trombones 1-2, with a bass clef. Measures 105-108 show rests. The sixth staff is for Timbales 1-2, with a bass clef. Measures 105-108 show rests. The seventh staff is for Violons 1-2, with two staves and a treble clef. Measures 105-108 show quarter notes. The eighth staff is for Alto, with a bass clef. Measures 105-108 show quarter notes. The ninth staff is for Violoncelles, with a bass clef. Measures 105-108 show quarter notes. The tenth staff is for Contrebasses, with a bass clef. Measures 105-108 show quarter notes.

109 110 111 112

Chitarone

Percussions de Polynésie

Trompettes 1-2

Cors 1-2

Trombones 1-2

Timbales 1-2

Violons 1-2

Alto

Violoncelles

Contrebasses

113 114 *Dal Segno*  (2) 115 116

Chitarone

Percussions de Polynésie

Trompettes 1-2

Cors 1-2

Trombones 1-2

Timbales 1-2

Violons 1-2

Alto

Violoncelles

Contrebasses

117 118 119 120

Chitarone

Percussions de Polynésie

Trompettes 1-2

Cors 1-2

Trombones 1-2

Timbales 1-2

Violons 1-2

Alto

Violoncelles

Contrebasses

121 2 - Les Iles ♩ = 120 122 123 124

Chitarone

Percussions de Polynésie

Trompettes 1-2

Cors 1-2

Trombones 1-2

Timbales 1-2

Violons 1-2

Alto

Violoncelles

Contrebasses

125 126 127 128

Chitarone

Percussions de Polynésie

Trompettes 1-2

Cors 1-2

Trombones 1-2

Timbales 1-2

Violons 1-2

Alto

Violoncelles

Contrebasses

Detailed description of the musical score: The score is organized into systems for different instrument groups. The Chitarone part consists of two staves (treble and bass clef) with rests in measures 125-127 and a final note in measure 128. The Percussions de Polynésie part has two staves with rests in measures 125-127 and a final note in measure 128. The Trompettes 1-2 part has two staves with rests in measures 125-127 and a final note in measure 128. The Cors 1-2 part has two staves with rests in measures 125-127 and a final note in measure 128. The Trombones 1-2 part has two staves with rests in measures 125-127 and a final note in measure 128. The Timbales 1-2 part has one staff with rests in measures 125-127 and a triplet of eighth notes in measure 128. The Violons 1-2 part has two staves with rests in measures 125-127 and a final note in measure 128. The Alto part has one staff with rests in measures 125-127 and a final note in measure 128. The Violoncelles part has two staves with rests in measures 125-127 and a final note in measure 128. The Contrebasses part has two staves with rests in measures 125-127 and a final note in measure 128.

129 130 131 132

Chitarone

Percussions de Polynésie

Trompettes 1-2

Cors 1-2

Trombones 1-2

Timbales 1-2

Violons 1-2

Alto

Violoncelles

Contrebasses

Detailed description of the musical score: The score is organized into seven systems, each representing a different instrument or group of instruments. Each system has four measures corresponding to measures 129, 130, 131, and 132. The Chitarone part consists of two staves (treble and bass clef) with rests in all measures. The Percussions de Polynésie part consists of two staves with rests in all measures. The Trompettes 1-2 part consists of two staves (treble and bass clef) with rests in all measures. The Cors 1-2 part consists of two staves (treble and bass clef) with rests in all measures. The Trombones 1-2 part consists of two staves (treble and bass clef) with rests in all measures. The Timbales 1-2 part consists of one staff (bass clef) with rests in measures 129 and 130, and diamond-shaped notes in measures 131 and 132. The Violons 1-2 part consists of two staves (treble clef) with rests in measures 129 and 130, and half notes in measures 131 and 132. The Alto part consists of one staff (bass clef) with rests in all measures. The Violoncelles part consists of two staves (treble and bass clef) with rests in all measures. The Contrebasses part consists of two staves (treble and bass clef) with rests in all measures.



133 134 135 136 *x4*

Chitarone

133 Moderato ♩ = 116 134 135 136 *x4*

Percussions de Polynésie

133 134 135 136 *x4*

Trompettes 1-2

Cors 1-2

Trombones 1-2

133 134 135 136 *x4*

Timbales 1-2

133 134 135 136 *x4*

Violons 1-2

Alto

Violoncelles

Contrebasses

Detailed description: This page contains musical staves for various instruments. The Chitarone part has two staves with rests. The Percussions de Polynésie part has two staves; the top staff has a melodic line with quarter notes and rests, and the bottom staff has a rhythmic pattern of eighth notes. The Trompettes 1-2, Cors 1-2, Trombones 1-2, and Timbales 1-2 parts all have two staves with rests. The Violons 1-2 part has two staves with rests. The Alto, Violoncelles, and Contrebasses parts all have two staves with rests. The tempo is marked 'Moderato' with a quarter note equal to 116. The page is numbered 133, 134, 135, and 136, with a repeat sign and 'x4' at the end of each line.



137 138 139 140 *x4*

Chitarone

137 *Accelerando* ♩ = 120 138 139 140 *x4*

Percussions de Polynésie

137 138 139 140 *x4*

Trompettes 1-2

Cors 1-2

Trombones 1-2

137 138 139 140 *x4*

Timbales 1-2

137 138 139 140 *x4*

Violons 1-2

Alto

Violoncelles

Contrebasses



141 142 143 144

Chitarone

Percussions de Polynésie

141 142 143 144

Trompettes 1-2

Cors 1-2

Trombones 1-2

141 142 143 144

Timbales 1-2

141 142 143 144

Violons 1-2

Alto

Violoncelles

Contrebasses

Detailed description: This is a page of a musical score for measures 141-144. The score is arranged in a system with multiple staves. The Chitarone part consists of two staves (treble and bass clef) with rests in all measures. The Percussions de Polynésie part consists of two staves; the top staff has a melody of eighth notes with rests, and the bottom staff has a rhythmic accompaniment of eighth notes. The Trompettes 1-2, Cors 1-2, Trombones 1-2, Timbales 1-2, Violons 1-2, Alto, Violoncelles, and Contrebasses parts all consist of rests in all measures.



145 146 147 148 *x4*

Chitarone

145 146 147 148 *x4*

Percussions de Polynésie

145 146 147 148 *x4*

Trompettes 1-2

Cors 1-2

Trombones 1-2

145 146 147 148 *x4*

Timbales 1-2

145 146 147 148 *x4*

Violons 1-2

Alto

Violoncelles

Contrebasses

Detailed description: This page contains a musical score for measures 145 to 148, repeated four times. The score is arranged in a grand staff format with multiple parts. The Chitarone part consists of two staves (treble and bass clef) with rests. The Percussions de Polynésie part consists of two staves, with the top staff showing a rhythmic pattern of eighth notes and the bottom staff showing a continuous eighth-note accompaniment. The Trompettes 1-2, Cors 1-2, Trombones 1-2, and Timbales 1-2 parts all consist of two staves with rests. The Violons 1-2 part consists of two staves with rests. The Alto part consists of one staff with rests. The Violoncelles part consists of one staff with rests. The Contrebasses part consists of one staff with rests. Each part is marked with a repeat sign and a 'x4' multiplier at the end of the section.



149 150 151 152

Chitarone

Percussions de Polynésie

149 150 151 152

Trompettes 1-2

Cors 1-2

Trombones 1-2

149 150 151 152

Timbales 1-2

149 150 151 152

Violons 1-2

Alto

Violoncelles

Contrebasses

Detailed description: This is a page of a musical score for a symphony orchestra and a chitarone. The score is divided into four measures, numbered 149, 150, 151, and 152. The instruments are arranged in a standard orchestral layout. The Chitarone part is in the top staff, with a treble and bass clef. The Percussions de Polynésie part is in the second system, with two staves. The Trompettes 1-2, Cors 1-2, and Trombones 1-2 parts are in the third system. The Timbales 1-2 part is in the fourth system. The Violons 1-2, Alto, Violoncelles, and Contrebasses parts are in the fifth system. The Percussions de Polynésie part has a rhythmic pattern of eighth notes and rests. The Trombones 1-2 part has a few notes in measure 152. The other parts are mostly rests.



153 154 155 156

Chitarone

Percussions de Polynésie

Trompettes 1-2

Cors 1-2

Trombones 1-2

Timbales 1-2

Violons 1-2

Alto

Violoncelles

Contrebasses

tr

Detailed description: This is a page of a musical score for measures 153 to 156. The score is arranged in a system with multiple staves. The instruments listed on the left are Chitarone, Percussions de Polynésie, Trompettes 1-2, Cors 1-2, Trombones 1-2, Timbales 1-2, Violons 1-2, Alto, Violoncelles, and Contrebasses. The Chitarone part consists of two staves (treble and bass clef) with rests in all measures. The Percussions de Polynésie part has two staves; the top staff has rests in measures 153-155 and a rhythmic pattern in measure 156, while the bottom staff has rests in measures 153-154 and a rhythmic pattern in measures 155-156, including a trill (tr) in measure 155. The Trompettes 1-2 part has a single staff with a melodic line starting in measure 153, continuing through measure 155, and ending with a fermata in measure 155. The Cors 1-2, Trombones 1-2, Timbales 1-2, Violons 1-2, Alto, Violoncelles, and Contrebasses parts all consist of two staves each with rests in all measures.



157 $\frac{3}{4}$ & 4

158

159

160

Chitarone

Percussions de Polynésie

Trompettes 1-2

Cors 1-2

Trombones 1-2

Timbales 1-2

Violons 1-2

Alto

Violoncelles

Contrebasses



161 162 163 164 *x4*

Chitarone

Acc. progressivement à chaque reprise

161 *Dal Segno* ♩ (3) 162 *Dal Segno* ♩ (4) 163 164 *x4*

Percussions de Polynésie

161 162 163 164 *x4*

Trompettes 1-2

Cors 1-2

Trombones 1-2

161 162 163 164 *x4*

Timbales 1-2

161 162 163 164 *x4*

Violons 1-2

Alto

Violoncelles

Contrebasses



165 166 167 168

Chitarone

Percussions de Polynésie

Trompettes 1-2

Cors 1-2

Trombones 1-2

Timbales 1-2

Violons 1-2

Alto

Violoncelles

Contrebasses

Detailed description: This is a page of a musical score for measures 165 through 168. The score is arranged in a multi-staff format. At the top, there is a decorative header with a repeating pattern of stylized musical instruments and symbols in brown and white. Below this, the score is divided into sections for different instruments. The Chitarone section consists of two staves (treble and bass clef) with rests in all four measures. The Percussions de Polynésie section consists of two staves (treble and bass clef). In measure 165, the top staff has a quarter note followed by a quarter rest, and the bottom staff has a series of eighth notes. In measure 166, both staves have quarter notes. In measure 167, both staves have quarter notes. In measure 168, the top staff has a quarter note followed by a quarter rest, and the bottom staff has a quarter note followed by a quarter rest. The Trompettes 1-2 section consists of one staff (treble clef) with rests in measures 165 and 166, and quarter notes in measures 167 and 168. The Cors 1-2 section consists of one staff (bass clef) with quarter notes in measures 165 and 166, and quarter notes in measures 167 and 168. The Trombones 1-2 section consists of one staff (bass clef) with rests in measures 165, 166, and 167, and a quarter note in measure 168. The Timbales 1-2 section consists of one staff (bass clef) with rests in all four measures. The Violons 1-2 section consists of two staves (treble clef) with rests in all four measures. The Alto section consists of one staff (bass clef) with rests in all four measures. The Violoncelles section consists of one staff (bass clef) with rests in all four measures. The Contrebasses section consists of one staff (bass clef) with rests in all four measures.

169 3 - Vers l'Ouest ♩ = 120 170 171 172

Piccolo

Chitarone

Musical score for Chitarone, measures 169-172. The score consists of two staves. In measure 169, the upper staff has a whole rest and the lower staff has a quarter note G4. In measure 170, the upper staff has a quarter note G4 and a half note F#4, and the lower staff has a whole rest. In measure 171, the upper staff has a whole rest and the lower staff has a quarter note G4. In measure 172, the upper staff has a quarter note G4 and a half note F#4, and the lower staff has a whole note chord of G4, B4, and D5.

Percussions de Polynésie

Musical score for Percussions de Polynésie, measures 169-172. The score consists of two staves. Measures 169-171 show whole rests on both staves. In measure 172, there are quarter notes on both staves.

Trompettes 1-2

Musical score for Trompettes 1-2, measures 169-172. The score consists of two staves. Measures 169-171 show whole rests on both staves. In measure 172, there are quarter notes on both staves.

Cors 1-2

Musical score for Cors 1-2, measures 169-172. The score consists of two staves. Measures 169-171 show whole rests on both staves. In measure 172, there are quarter notes on both staves.

Trombones 1-2

Musical score for Trombones 1-2, measures 169-172. The score consists of two staves. Measures 169-171 show whole rests on both staves. In measure 172, there are quarter notes on both staves.

Timbales 1-2

Musical score for Timbales 1-2, measures 169-172. The score consists of two staves. Measures 169-171 show whole rests on both staves. In measure 172, there are quarter notes on both staves.

Violons 1-2

Musical score for Violons 1-2, measures 169-172. The score consists of two staves. Measures 169-171 show whole rests on both staves. In measure 172, there are whole notes on both staves.

Alto

Musical score for Alto, measures 169-172. The score consists of two staves. Measures 169-171 show whole rests on both staves. In measure 172, there are whole notes on both staves.

Violoncelles

Musical score for Violoncelles, measures 169-172. The score consists of two staves. Measures 169-171 show whole rests on both staves. In measure 172, there are whole notes on both staves.

Contrebasses

Musical score for Contrebasses, measures 169-172. The score consists of two staves. Measures 169-171 show whole rests on both staves. In measure 172, there are quarter notes on both staves.

173 174 175 176

Chitarone

Percussions de Polynésie

Trompettes 1-2

Cors 1-2

Trombones 1-2

Timbales 1-2

Violons 1-2

Alto

Violoncelles

Contrebasses

177 178 179 180

Chitarone

Percussions de Polynésie

Trompettes 1-2

Cors 1-2

Trombones 1-2

Timbales 1-2

Violons 1-2

Alto

Violoncelles

Contrebasses

181 182 183 184 **1** Piccolo

Chitarone

Percussions de Polynésie

Trompettes 1-2

Cors 1-2

Trombones 1-2

Timbales 1-2

Violons 1-2

Alto

Violoncelles

Contrebasses

185 186 187 188

Chitarone

Percussions de Polynésie

Trompettes 1-2

Cors 1-2

Trombones 1-2

Timbales 1-2

Violons 1-2

Alto

Violoncelles

Contrebasses

Detailed description of the musical score: The score is for measures 185 to 188. The Chitarone part (measures 185-188) has a treble clef and a key signature of one sharp (F#). Measure 185 contains a quarter note G4. Measure 186 contains a quarter note A4 with a fermata above it. Measure 187 contains a quarter rest. Measure 188 contains a quarter note B4 with a fermata above it. The Percussions de Polynésie part consists of two staves with rests in all measures. The Trompettes 1-2, Cors 1-2, Trombones 1-2, and Timbales 1-2 parts all consist of rests in all measures. The Violons 1-2 part has two staves; the upper staff has a quarter note G4 in measure 185, a quarter note A4 with a fermata in measure 186, a quarter note B4 with a fermata in measure 187, and a quarter rest in measure 188. The lower staff has rests in all measures. The Alto part has a rest in all measures. The Violoncelles part has a quarter note G2 in measure 185, a quarter note A2 with a fermata in measure 186, a quarter note B2 with a fermata in measure 187, and a quarter note C3 with a fermata in measure 188. The Contrebasses part has rests in all measures.

189 190 191 192

Chitarone

Percussions de Polynésie

Trompettes 1-2

Cors 1-2

Trombones 1-2

Timbales 1-2

Violons 1-2

Alto

Violoncelles

Contrebasses

Detailed description of the musical score: The score is for measures 189 to 192. The Chitarone part (measures 189-192) features a melody in the treble clef with a key signature of one sharp (F#). Measure 189 has a quarter rest in the bass clef. Measure 190 has a quarter rest in the bass clef. Measure 191 has a quarter note G4 in the treble clef and a quarter rest in the bass clef. Measure 192 has a quarter note G4 in the treble clef and a quarter rest in the bass clef. The Percussions de Polynésie part consists of two staves with quarter rests in both. The Trompettes 1-2, Cors 1-2, Trombones 1-2, Timbales 1-2, Violons 1-2, Alto, and Contrebasses parts all consist of quarter rests in both staves. The Violoncelles part has a quarter note G2 in the bass clef in measure 189, a quarter note G2 in the bass clef in measure 190, and quarter rests in measures 191 and 192.

193 194 195 196 Piccolo

Chitarone

Percussions de Polynésie

Trompettes 1-2

Cors 1-2

Trombones 1-2

Timbales 1-2

Violons 1-2

Alto

Violoncelles

Contrebasses

197 198 199 200

Chitarone

Percussions de Polynésie

Trompettes 1-2

Cors 1-2

Trombones 1-2

Timbales 1-2

Violons 1-2

Alto

Violoncelles

Contrebasses

Detailed description of the musical score: The score is for measures 197 to 200. The Chitarone part (measures 197-200) features a treble clef with a key signature of one sharp (F#) and a bass clef with a key signature of one sharp (F#). Measure 197 has a quarter note G4 in the treble and a whole rest in the bass. Measure 198 has a quarter note G4 in the treble with a '7' above it, and a whole rest in the bass. Measure 199 has whole rests in both staves. Measure 200 has a quarter note G4 in the treble, a quarter note F#4 in the bass, and a fermata over the F#4 note. The Percussions de Polynésie part consists of two staves with whole rests in all four measures. The Trompettes 1-2, Cors 1-2, Trombones 1-2, and Timbales 1-2 parts all consist of whole rests in all four measures. The Violons 1-2 part has two staves; the top staff has a quarter note G4 in measure 197, a quarter note F#4 in measure 198, and whole rests in measures 199 and 200. The bottom staff has whole rests in all four measures. The Alto part has whole rests in all four measures. The Violoncelles part has a quarter note G2 in measure 197, a quarter note F#2 in measure 198, a quarter note G2 in measure 199, a quarter note F#2 in measure 200, and a fermata over the F#2 note. The Contrebasses part has whole rests in all four measures.

201 202 203 204

Chitarone

Percussions de Polynésie

Trompettes 1-2

Cors 1-2

Trombones 1-2

Timbales 1-2

Violons 1-2

Alto

Violoncelles

Contrebasses



205 4 - A Ternata ♩ = 120 206

207

208

Chitarone

Percussions de Polynésie

Trompettes 1-2

Cors 1-2

Trombones 1-2

Timbales 1-2

Percussions d'Indonésie



209 210 211 212 *x4*

Chitarone

209 210 211 212 *x4*

Percussions de Polynésie

209 210 211 212 *x4*

Trompettes 1-2

Cors 1-2

Trombones 1-2

209 210 211 212 *x4*

Timbales 1-2

209 210 211 212 *x4*

Percussions d'Indonésie



213 214 215 216 **2/4** *x4*

Chitarone

tr *L Piccolo* *x4*

213 214 215 216 *x4*

Percussions de Polynésie

213 214 215 216 *x4*

Trompettes 1-2

Cors 1-2

Trombones 1-2

213 214 215 216 *x4*

Timbales 1-2

213 214 215 216 *x4*

Percussions d'Indonésie



217 218 219 220 *x4*

Chitarone

217 218 219 220 *x4*

Percussions de Polynésie

217 218 219 220 *x4*

Trompettes 1-2

Cors 1-2

Trombones 1-2

217 218 219 220 *x4*

Timbales 1-2

217 218 219 220 *x4*

Percussions d'Indonésie



221 222 223 224 *x4*

Chitarone

221 222 223 224 *x4*

Percussions de Polynésie

221 222 223 224 *x4*

Trompettes 1-2

Cors 1-2

Trombones 1-2

221 222 223 224 *x4*

Timbales 1-2

221 222 223 224 *x4*

Percussions d'Indonésie



225 226 227 228 Aux passages 1 et 4 $x4$

Chitarone

225 226 227 228 $x4$

Percussions de Polynésie

225 226 227 228 $x4$

Trompettes 1-2

Cors 1-2

Trombones 1-2

225 226 227 228 $x4$

Timbales 1-2

225 226 227 228 $x4$

Percussions d'Indonésie



229 230 231 232 *x4*

Chitarone

229 230 231 232 *x4*

Percussions de Polynésie

229 230 231 232 *x4*

Trompettes 1-2

Cors 1-2

Trombones 1-2

229 230 231 232 *x4*

Timbales 1-2

229 230 231 232 *x4*

Percussions d'Indonésie



233 234 235 236

Chitarone

233 234 235 236

Percussions de Polynésie

233 234 235 236

Trompettes 1-2

Cors 1-2

Trombones 1-2

233 234 235 236

Timbales 1-2

233 234 235 236

Percussions d'Indonésie

Detailed description: This page contains a musical score for measures 233 through 236. The score is organized into five systems. The first system is for Chitarone, with two staves (treble and bass clef) showing rests. The second system is for Percussions de Polynésie, with two staves (treble and bass clef) showing rests. The third system is for Trompettes 1-2, Cors 1-2, and Trombones 1-2, with three staves (treble and two bass clefs) showing rests. The fourth system is for Timbales 1-2, with one staff (bass clef) showing rests. The fifth system is for Percussions d'Indonésie, with four staves (treble, two bass, and one bass clef) showing rhythmic patterns with accents. A vertical bar line is placed between measures 234 and 235. The Percussions d'Indonésie section is highlighted with a light yellow background.



237 238 239 240

Chitarone

237 238 239 240

Percussions de Polynésie

237 238 239 240

Trompettes 1-2

Cors 1-2

Trombones 1-2

237 238 239 240

Timbales 1-2

237 238 239 240

Percussions d'Indonésie