



Bernard Dewagtere

France, SIN LE NOBLE

Beau soir (Beautiful Evening) (Transcription pour flûte à bec) Debussy, Claude

About the artist

Doctor in musicology, conductor and composer.

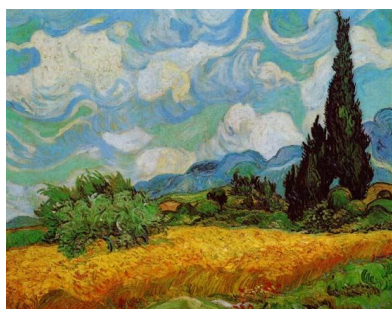
Compositions and arrangements from all eras, in all styles or musical genres and for any instrument or vocal training.

Qualification: PhD Musicology

Associate: SACEM - IPI code of the artist : 342990

Artist page : <https://www.free-scores.com/Download-PDF-Sheet-Music-bernard-dewagtere.htm>

About the piece



Title: Beau soir (Beautiful Evening) [Transcription pour flûte à bec]

Composer: Debussy, Claude

Arranger: Dewagtere, Bernard

Copyright: Copyright © Dewagtere, Bernard

Instrumentation: Recorder, Piano

Style: Early 20th century

Comment: When the rivers are rosy in the setting sun, And a warm shiver runs over the wheat fields, Advice to be happy seems to rise up from things And climb toward the troubled heart. Advice to taste the charm of being in the world While one is young and the evening is beautiful, For we are going away, as this stream goes away: The stream to the sea, we to the grave.

Bernard Dewagtere on [free-scores.com](https://www.free-scores.com)

LICENSE

This sheet music requires an authorization
- for public performances
- for use by teachers

Buy this license at :

<https://www.free-scores.com/licence-partition-uk.php?partition=33487>



- listen to the audio
- share your interpretation
- comment
- pay the licence
- contact the artist

Prohibited distribution on other website.

Beau soir (Beautiful Evening)

Transcription pur Flûte à bec soprano

Claude Debussy (1883)
Transc. : Bernard Dewagtere

Andante ma non troppo

Flûte à bec Soprano

Musical score for Soprano Flute and Piano, measures 1-4. The Soprano Flute part is mostly rests. The Piano part features a melody with triplets and slurs, starting with a *pp* dynamic.

Fl. à b. S.

Musical score for Bass Flute and Piano, measures 5-9. The Bass Flute part begins with a melody marked *p*. The Piano part continues with the triplet-based accompaniment.

Fl. à b. S.

Musical score for Bass Flute and Piano, measures 10-14. The Bass Flute part continues with a melodic line. The Piano part features more complex triplet patterns and slurs.

Beau soir (Beautiful Evening)

2
15

Fl. à b. S.

Pno

poco rit.

20

Fl. à b. S.

Pno

p

a tempo

p

animato poco a poco cresc.

25

Fl. à b. S.

Pno

f

dim.

Beau soir (Beautiful Evening)

Fl. à b. S. *dim. molto* *p* *Plus lent*

Pno *dim. molto* *p* *più p* *Plus lent*

Fl. à b. S. *pp*

Pno *pp* *morendo.*

Fl. à b. S.

Pno *pp*