



Faivre Christian

France, BISCHHEIM

Royal feast at Versailles

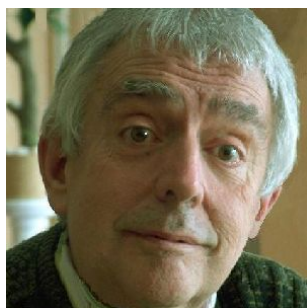
Delalande, Michel-Richard

About the artist

All styles composer

Artist page : <https://www.free-scores.com/Download-PDF-Sheet-Music-christian-faivre.htm>

About the piece



Title: Royal feast at Versailles
Composer: Delalande, Michel-Richard
Arranger: Christian, Faivre
Copyright: Copyright © Faivre Christian
Instrumentation: Orchestra
Style: Baroque

Faivre Christian on [free-scores.com](https://www.free-scores.com)



This work is not Public Domain. You must contact the artist for any use outside the private area.



- listen to the audio
- share your interpretation
- comment
- contact the artist

Louis XIV
1638-1715



Une fête à Versailles

Chaconne des « Fontaines de Versailles »



Richard Delalande
(1657-1726)

Arrangement : Christian Faivre

1 Moderato ♩ = 120 2 3 4

Flûtes à bec

Hautbois

Bassons

1 2 3 4

Trompettes

Cor français

Trombones

1 2 3 4

Timbales

1 2 3 4

Violons

Alto

Violoncelles

Contrebasses

5 6 7 8

Flûtes à bec

Hautbois

Bassons

5 6 7 8

Trompettes

Cor français

Trombones

5 6 7 8

Timbales

5 6 7 8

Violons

Alto

Violoncelles

Contrebasses

Detailed description of the musical score: The score is for measures 5 through 8 of a piece. The key signature has two sharps (F# and C#). The time signature is not explicitly shown but appears to be 4/4 based on the note values. The Flutes à bec and Hautbois parts play a melodic line starting on G4 in measure 5, moving to A4, B4, and then descending. The Bassons play a lower melodic line. The Trompettes, Cor français, and Trombones are marked with a flat line, indicating they are silent. The Timbales also have a flat line. The Violons, Alto, Violoncelles, and Contrebasses provide harmonic support with various note values, including quarter and eighth notes.

9 10 11 12

Flûtes à bec

Hautbois

Bassons

9 10 11 12

Trompettes

Cor français

Trombones

9 10 11 12

Timbales

9 10 11 12

Violons

Alto

Violoncelles

Contrebasses

13 14 15 16

Flûtes à bec

Hautbois

Bassons

13 14 15 16

Trompettes

Cor français

Trombones

13 14 15 16

Timbales

13 14 15 16

Violons

Alto

Violoncelles

Contrebasses

Detailed description of the musical score: The score is for measures 13 to 16. The key signature has two sharps (F# and C#). The woodwind section includes Flutes à bec (treble clef), Oboes (treble clef), and Bassoons (bass clef). The strings section includes Violins (treble clef), Viola (alto clef), Violoncelles (bass clef), and Contrebasses (bass clef). The percussion section includes Timbales (bass clef). The Flutes à bec and Oboes play a melodic line with accents in measures 14 and 16. The Bassoons play a rhythmic accompaniment. The strings play a simple harmonic accompaniment. The Trompettes, Cor français, Trombones, and Timbales are marked with a flat line, indicating they are silent in these measures.

17 18 19 20

Flûtes à bec

Hautbois

Bassons

17 18 19 20

Trompettes

Cor français

Trombones

17 18 19 20

Timbales

17 18 19 20

Violons

Alto

Violoncelles

Contrebasses

Detailed description of the musical score: The score is for measures 17 through 20. The key signature has two sharps (F# and C#). The woodwind section (Flûtes à bec, Hautbois, Bassons) has active parts. The brass section (Trompettes, Cor français, Trombones) and percussion (Timbales) are silent, indicated by rests. The string section (Violons, Alto, Violoncelles, Contrebasses) provides harmonic support with sustained notes and some melodic movement.

21 22 23 24

Flûtes à bec

Hautbois

Bassons

21 22 23 24

Trompettes

Cor français

Trombones

21 22 23 24

Timbales

21 22 23 24

Violons

Alto

Violoncelles

Contrebasses

25 26 27 28

Flûtes à bec

Hautbois

Bassons

25 26 27 28

Trompettes

Cor français

Trombones

25 26 27 28

Timbales

25 26 27 28

Violons

Alto

Violoncelles

Contrebasses

Detailed description of the musical score: The score is for measures 25 to 28. The key signature has two sharps (F# and C#). The woodwind section (Flûtes à bec, Hautbois, Bassons) has active parts. The brass section (Trompettes, Cor français, Trombones) and percussion (Timbales) are marked with rests. The string section (Violons, Alto, Violoncelles, Contrebasses) has active parts. The Flûtes à bec and Hautbois parts are identical, starting with a quarter note G4, followed by quarter notes A4, B4, and C5. The Bassons part starts with a half note G3. The Trompettes, Cor français, and Trombones parts are marked with rests. The Timbales part is marked with rests. The Violons part starts with a quarter note G4, followed by quarter notes A4, B4, and C5. The Alto part starts with a quarter note G4, followed by quarter notes A4, B4, and C5. The Violoncelles and Contrebasses parts start with a half note G3.

29 30 31 32

Flûtes à bec

Hautbois

Bassons

29 30 31 32

Trompettes

Cor français

Trombones

29 30 31 32

Timbales

29 30 31 32

Violons

Alto

Violoncelles

Contrebasses

Detailed description of the musical score: The score is for measures 29 through 32. The key signature has two sharps (F# and C#). The woodwind section (Flutes, Oboes, Bassoons) plays a melodic line starting on a dotted quarter note in measure 29, moving through eighth notes and quarter notes. The brass section (Trumpets, French Horns, Trombones) is marked with a flat sign, indicating they are silent. The timpani part is also marked with a flat sign. The string section (Violins, Viola, Violoncelles, Double Basses) provides a harmonic accompaniment with a steady eighth-note pattern in the upper parts and a dotted quarter-note pattern in the lower parts.

33 34 35 36

Flûtes à bec

Hautbois

Bassons

33 34 35 36

Trompettes

Cor français

Trombones

33 34 35 36

Timbales

33 34 35 36

Violons

Alto

Violoncelles

Contrebasses

Detailed description of the musical score: The score is for measures 33 to 36. The key signature has two sharps (F# and C#). The woodwind section (Flutes à bec, Oboes, Bassoons) plays a melodic line starting on G4 in measure 33, moving stepwise to A4, B4, and C5 in measure 34, then descending to B4, A4, G4, and F#4 in measure 35, and finally to E4, D4, C4, and B3 in measure 36. The strings (Violins, Viola, Violoncelles, Double Basses) play a similar descending line, starting on G3 in measure 33 and ending on B2 in measure 36. The brass section (Trumpets, French Horns, Trombones) and Timpani are silent throughout these measures.

37 38 39 40

Flûtes à bec

Hautbois

Bassons

37 38 39 40

Trompettes

Cor français

Trombones

37 38 39 40

Timbales

37 38 39 40

Violons

Alto

Violoncelles

Contrebasses

Detailed description of the musical score: The score is for measures 37 to 40. The key signature has two sharps (F# and C#). The woodwind section (Flûtes à bec, Hautbois, Bassons) has active parts. The Flûtes à bec and Hautbois play a melodic line of eighth notes, while the Bassons play a simple harmonic accompaniment. The brass section (Trompettes, Cor français, Trombones) and percussion (Timbales) are silent, indicated by rests. The string section (Violons, Alto, Violoncelles, Contrebasses) also has active parts, with the Violons and Alto playing a melodic line and the lower strings providing harmonic support.

41 42 43 44

Flûtes à bec

Hautbois

Bassons

41 42 43 44

Trompettes

Cor français

Trombones

41 42 43 44

Timbales

41 42 43 44

Violons

Alto

Violoncelles

Contrebasses

Detailed description of the musical score: The score is for measures 41 to 44. The key signature has two sharps (F# and C#). The woodwind section (Flûtes à bec, Hautbois, Bassons) has a melodic line with accents and slurs. The brass section (Trompettes, Cor français, Trombones) has a rhythmic pattern of eighth notes. The string section (Violons, Alto, Violoncelles, Contrebasses) has a rhythmic pattern of eighth notes. The timbales part is mostly rests.

45 46 47 48

Flûtes à bec

Hautbois

Bassons

45 46 47 48

Trompettes

Cor français

Trombones

45 46 47 48

Timbales

45 46 47 48

Violons

Alto

Violoncelles

Contrebasses

Detailed description of the musical score: The score is for measures 45 to 48. The key signature is one sharp (F#) and the time signature is 6/4. The woodwind section (Flûtes à bec, Hautbois, Bassons) has a melodic line in measures 45-47, with a change in texture in measure 48. The brass section (Trompettes, Cor français, Trombones) has a rhythmic pattern in measures 45-47, with a change in texture in measure 48. The percussion section (Timbales) has a rhythmic pattern in measures 45-47, with a change in texture in measure 48. The string section (Violons, Alto, Violoncelles, Contrebasses) has a rhythmic pattern in measures 45-47, with a change in texture in measure 48.

49 50 51 52

Flûtes à bec

Hautbois

Bassons

49 50 51 52

Trompettes

Cor français

Trombones

49 50 51 52

Timbales

49 50 51 52

Violons

Alto

Violoncelles

Contrebasses

Detailed description of the musical score: The score is for a symphonic piece in 3/4 time with a key signature of one sharp (F#). It consists of 11 parts: Flutes à bec, Hautbois, Bassons, Trompettes, Cor français, Trombones, Timbales, Violons, Alto, Violoncelles, and Contrebasses. The score is divided into four measures, numbered 49 to 52. The Flutes à bec and Hautbois parts play a melodic line of eighth notes. The Bassons, Cor français, and Contrebasses play a simple harmonic accompaniment of half notes. The Trompettes, Trombones, and Timbales are mostly silent, indicated by rests. The Violons and Alto parts play a more complex melodic line, with the Violons having a sharp sign above the note in measure 51.

53 54 55 56

Flûtes à bec

Hautbois

Bassons

53 54 55 56

Trompettes

Cor français

Trombones

53 54 55 56

Timbales

53 54 55 56

Violons

Alto

Violoncelles

Contrebasses

f

57 58 59 60

Flûtes à bec

Hautbois

Bassons

57 58 59 60

Trompettes

Cor français

Trombones

57 58 59 60

Timbales

57 58 59 60

Violons

Alto

Violoncelles

Contrebasses

Detailed description of the musical score: The score is for measures 57, 58, 59, and 60. The key signature has two sharps (F# and C#). The woodwind section (Flûtes à bec, Hautbois, Bassons) has active parts. The Flûtes à bec and Hautbois play a melodic line starting with a half note in measure 57, followed by eighth notes in measure 58, and a quarter note in measure 59. The Bassons play a rhythmic accompaniment of eighth notes. The brass section (Trompettes, Cor français, Trombones) is mostly silent, with some rests and a few notes in measure 60. The percussion section (Timbales) has a single note in measure 57 and rests thereafter. The string section (Violons, Alto, Violoncelles, Contrebasses) has active parts. The Violons play a melodic line starting with a half note in measure 57, followed by eighth notes in measure 58, and a quarter note in measure 59. The Alto plays a rhythmic accompaniment of eighth notes. The Violoncelles and Contrebasses play a rhythmic accompaniment of eighth notes.

61 62 63 64

Flûtes à bec

Hautbois

Bassons

61 62 63 64

Trompettes

Cor français

Trombones

61 62 63 64

Timbales

61 62 63 64

Violons

Alto

Violoncelles

Contrebasses

Detailed description of the musical score: The score is for a symphonic piece titled 'A17-G Une fête à Versailles'. It consists of four measures, numbered 61 to 64. The key signature is one sharp (F#). The time signature changes from 6/4 in measures 61 and 62 to 3/4 in measures 63 and 64. The instruments and their parts are: Flutes à bec (treble clef), Hautbois (treble clef), Bassons (bass clef), Trompettes (treble clef), Cor français (bass clef), Trombones (bass clef), Timbales (bass clef), Violons (treble clef), Alto (bass clef), Violoncelles (bass clef), and Contrebasses (bass clef). The Flutes à bec and Hautbois parts are active throughout. The Bassons, Trompettes, Cor français, Trombones, and Violoncelles/Contrebasses have rests in measures 61 and 62, then enter in measure 63. The Timbales have a rhythmic pattern in measures 61 and 62, then a rest in measure 63. The Violons and Alto parts are active throughout.

65 66 67 68

Flûtes à bec

Hautbois

Bassons

65 66 67 68

Trompettes

Cor français

Trombones

65 66 67 68

Timbales

65 66 67 68

Violons

Alto

Violoncelles

Contrebasses

Detailed description of the musical score: The score is for measures 65 to 68. The key signature has two sharps (F# and C#). The woodwind section (Flûtes à bec, Hautbois, Bassons) has active parts. The brass section (Trompettes, Cor français, Trombones) and percussion (Timbales) are silent, indicated by rests. The string section (Violons, Alto, Violoncelles, Contrebasses) has active parts. The Flûtes à bec and Hautbois parts are identical, playing a melodic line. The Bassons play a rhythmic accompaniment. The Violons play a melodic line, the Alto plays a similar line, and the Violoncelles and Contrebasses play a rhythmic accompaniment.

69 70 71 72

Flûtes à bec

Hautbois

Bassons

69 70 71 72

Trompettes

Cor français

Trombones

69 70 71 72

Timbales

69 70 71 72

Violons

Alto

Violoncelles

Contrebasses

73 74 75 76

Flûtes à bec

Hautbois

Bassons

73 74 75 76

Trompettes

Cor français

Trombones

73 74 75 76

Timbales

73 74 75 76

Violons

Alto

Violoncelles

Contrebasses

Detailed description of the musical score: The score is for measures 73 to 76. The key signature has two sharps (F# and C#). The woodwind section (Flûtes à bec, Hautbois, Bassons) has active parts. The Flûtes à bec and Hautbois parts are identical, starting with a half note G4 in measure 73, followed by quarter notes A4, B4, C5, B4, A4, G4 in measures 74-76. The Bassons part has whole rests in all four measures. The brass section (Trompettes, Cor français, Trombones) and Timbales have whole rests in all four measures. The string section (Violons, Alto, Violoncelles, Contrebasses) has active parts. The Violons part has whole rests in measures 73-74 and quarter notes G4, A4, B4, C5 in measures 75-76. The Alto part has half notes G3, A3 in measure 73, half notes B3, C4 in measure 74, and quarter notes D4, E4, F4, G4 in measures 75-76. The Violoncelles and Contrebasses parts have whole rests in all four measures.

77 78 79 80

Flûtes à bec

Hautbois

Bassons

77 78 79 80

Trompettes

Cor français

Trombones

77 78 79 80

Timbales

77 78 79 80

Violons

Alto

Violoncelles

Contrebasses

Detailed description of the musical score: The score is for measures 77 to 80. The key signature has two sharps (F# and C#). The woodwind section (Flûtes à bec, Hautbois, Bassons) has active parts. The brass section (Trompettes, Cor français, Trombones) and percussion (Timbales) are mostly silent, indicated by rests. The string section (Violons, Alto, Violoncelles, Contrebasses) has active parts. The Flûtes à bec and Hautbois parts are identical, playing a melodic line. The Bassons part has a rest in measure 77 and 78, then enters in measure 79. The Trombones and Contrebasses parts have rests in measure 77 and 78, then enter in measure 79. The Violons and Alto parts have rests in measure 77 and 78, then enter in measure 79.

81 82 83 84

Flûtes à bec

Hautbois

Bassons

81 82 83 84

Trompettes

Cor français

Trombones

81 82 83 84

Timbales

81 82 83 84

Violons

Alto

Violoncelles

Contrebasses

Detailed description of the musical score: The score is for measures 81 to 84. The key signature has two sharps (F# and C#). The woodwind section (Flûtes à bec, Hautbois, Bassons) has active parts. The brass section (Trompettes, Cor français, Trombones) and Timbales are marked with a flat line, indicating they are silent. The string section (Violons, Alto, Violoncelles, Contrebasses) has active parts. The Flûtes à bec and Hautbois parts are identical, playing a melodic line with eighth notes and quarter notes. The Bassons play a similar line but with some rests. The strings play a steady accompaniment of quarter notes.

85 86 87 88

Flûtes à bec

Hautbois

Bassons

85 86 87 88

Trompettes

Cor français

Trombones

85 86 87 88

Timbales

85 86 87 88

Violons

Alto

Violoncelles

Contrebasses

Detailed description of the musical score: The score is for measures 85-88 of 'A17-G Une fête à Versailles'. It features a woodwind section (Flûtes à bec, Hautbois, Bassons) with active parts, and a brass section (Trompettes, Cor français, Trombones) that is mostly silent. Percussion (Timbales) is also silent. The string section (Violons, Alto, Violoncelles, Contrebasses) provides harmonic support with sustained notes and rhythmic patterns. The key signature has two sharps (F# and C#), and the time signature is 4/4. Measure 86 includes trill ornaments on the woodwind parts.

89 90 91 92

Flûtes à bec

Hautbois

Bassons

89 90 91 92

Trompettes

Cor français

Trombones

89 90 91 92

Timbales

89 90 91 92

Violons

Alto

Violoncelles

Contrebasses

The image displays a musical score for measures 89 through 92. The score is organized into four systems. The first system includes Flûtes à bec (flutes), Hautbois (oboes), and Bassons (bassoons). The second system includes Trompettes (trumpets), Cor français (French horns), and Trombones. The third system includes Timbales (kettledrums). The fourth system includes Violons (violins), Alto (viola), Violoncelles (cellos), and Contrebasses (double basses). The key signature is one sharp (F#), and the time signature is 4/4. The woodwinds and strings play active parts, while the brass and timbales are mostly silent, indicated by rests.

93 94 95 96

Flûtes à bec

Hautbois

Bassons

93 94 95 96

Trompettes

Cor français

Trombones

93 94 95 96

Timbales

93 94 95 96

Violons

Alto

Violoncelles

Contrebasses

Detailed description of the musical score: The score is for measures 93 to 96. The key signature has two sharps (F# and C#). The woodwind section (Flûtes à bec, Hautbois, Bassons) plays a melodic line in measures 93-94, with a trill on the final note of measure 94. The brass section (Trompettes, Cor français, Trombones) has rests in measure 93 and enters in measure 94 with a rhythmic pattern. The timpani (Timbales) has rests in measures 93 and 96, and plays a rhythmic pattern in measures 94 and 95. The string section (Violons, Alto, Violoncelles, Contrebasses) provides a harmonic accompaniment throughout the measures.

97 98 99 100

Flûtes à bec

Hautbois

Bassons

97 98 99 100

Trompettes

Cor français

Trombones

97 98 99 100

Timbales

97 98 99 100

Violons

Alto

Violoncelles

Contrebasses

Detailed description of the musical score: The score is for measures 97-100 in a key of D major (two sharps). The woodwind section (Flûtes à bec, Hautbois, Bassons) has a melodic line in the upper staves and a supporting line in the lower staves. The brass section (Trompettes, Cor français, Trombones) is mostly silent, with some activity in the Cor français and Trombones in measure 100. The percussion section (Timbales) is silent. The string section (Violons, Alto, Violoncelles, Contrebasses) provides a harmonic and rhythmic foundation, with the Alto and Violoncelles/Contrebasses playing a similar melodic line to the woodwinds.

101 102 103 104

Flûtes à bec

Hautbois

Bassons

101 102 103 104

Trompettes

Cor français

Trombones

101 102 103 104

Timbales

101 102 103 104

Violons

Alto

Violoncelles

Contrebasses

Detailed description of the musical score: The score is for measures 101 to 104. It is in G major (one sharp) and 6/4 time, which changes to 3/4 time at measure 102. The woodwind section (Flutes à bec, Hautbois, Bassons) and string section (Violons, Alto, Violoncelles, Contrebasses) are active. The brass section (Trompettes, Cor français, Trombones) and timpani are silent, indicated by rests. The woodwinds play a melodic line, with the flutes and oboes having a trill-like ornament at the start of measure 102. The strings provide a rhythmic accompaniment with eighth and sixteenth notes.

105 106 107 108

Flûtes à bec

Hautbois

Bassons

105 106 107 108

Trompettes

Cor français

Trombones

105 106 107 108

Timbales

105 106 107 108

Violons

Alto

Violoncelles

Contrebasses

Detailed description of the musical score: The score is for measures 105 through 108. The key signature is G major (one sharp). The time signature changes from 6/4 in measure 107 to 3/4 in measure 108. The woodwind section (Flutes, Oboes, Bassoons) and string section (Violins, Violas, Cellos, Double Basses) are active. The brass section (Trumpets, French Horns, Trombones) and Timpani are mostly silent, with some activity in measures 107 and 108. The Flute part has trills in measures 105 and 107. The Bassoon part has trills in measures 105 and 107. The Violin and Viola parts have trills in measures 105 and 107. The Cello and Double Bass parts have a steady eighth-note pattern in measures 105 and 107, and a half-note pattern in measure 108.

109 110 111 112

Flûtes à bec

Hautbois

Bassons

109 110 111 112

Trompettes

Cor français

Trombones

109 110 111 112

Timbales

109 110 111 112

Violons

Alto

Violoncelles

Contrebasses

113 114 115 116

Flûtes à bec

Hautbois

Bassons

113 114 115 116

Trompettes

Cor français

Trombones

113 114 115 116

Timbales

113 114 115 116

Violons

Alto

Violoncelles

Contrebasses

Detailed description of the musical score: The score is for measures 113 to 116. The key signature has two sharps (F# and C#). The woodwind section (Flûtes à bec, Hautbois, Bassons) has active parts. The Flûtes à bec and Hautbois parts are in the treble clef and feature melodic lines with slurs and accents. The Bassons part is in the bass clef and provides a harmonic accompaniment. The brass section (Trompettes, Cor français, Trombones) and Timbales are marked with rests, indicating they are silent during these measures. The string section (Violons, Alto, Violoncelles, Contrebasses) is in the bass clef and provides a steady accompaniment with quarter and eighth notes.

117 118 119 120

Flûtes à bec

Hautbois

Bassons

117 118 119 120

Trompettes

Cor français

Trombones

117 118 119 120

Timbales

117 118 119 120

Violons

Alto

Violoncelles

Contrebasses

121 122 123 1 2 124

Flûtes à bec

Hautbois

Bassons

121 122 123 124

Trompettes

Cor français

Trombones

121 122 123 124

Timbales

121 122 123 124

Violons

Alto

Violoncelles

Contrebasses

Detailed description of the musical score: The score is for measures 121-124. It features a key signature of one sharp (F#) and a time signature change from 6/4 to 3/4 at measure 123. The woodwind section (Flûtes à bec, Hautbois, Bassons) has active parts in measures 121-123. The brass section (Trompettes, Cor français, Trombones) and Timbales are silent throughout. The string section (Violons, Alto, Violoncelles, Contrebasses) provides a harmonic foundation with sustained notes and some melodic movement. A first ending bracket covers measures 123 and 124, with a second ending leading back to measure 123.