



Bernard Dewagtere

France, SIN LE NOBLE

Summertime (Porgy and Bess) Gershwin, George

About the artist

Doctor in musicology, conductor and composer.

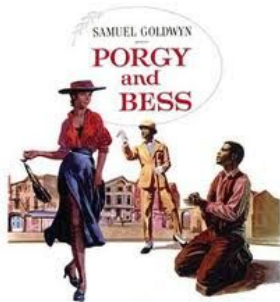
Compositions and arrangements from all eras, in all styles or musical genres and for any instrument or vocal training.

Qualification: PhD Musicology

Associate: SACEM - IPI code of the artist : 342990

Artist page : <https://www.free-scores.com/Download-PDF-Sheet-Music-bernard-dewagtere.htm>

About the piece



Title: Summertime [Porgy and Bess]

Composer: Gershwin, George

Arranger: Dewagtere, Bernard

Copyright: Copyright © Dewagtere, Bernard

Instrumentation: Guitar and/or piano

Style: Jazz

Comment: Gershwin began composing the song in December 1933, attempting to create his own spiritual in the style of the African American folk music of the period. The Ukrainian-Canadian composer and singer Alexis Kochan has suggested that he based the tune on a Ukrainian lullaby, Oi Khodyt Son Kolo Vikon (A Dream Passes By The Windows), which he heard in a New York City performance by Oleksander Koshetz's Ukrainian National Chorus in 1929.[6] Gershwin had...
(more online)

Bernard Dewagtere on [free-scores.com](https://www.free-scores.com)

LICENSE

This sheet music requires an authorization
- for public performances
- for use by teachers

Buy this license at :

<https://www.free-scores.com/licence-partition-uk.php?partition=38430>



- listen to the audio
- share your interpretation
- comment
- pay the licence
- contact the artist

Prohibited distribution on other website.

Summertime

Porgy and Bess

George Gershwin (1935)

Arr. : Bernard Dewagtere

Broadly ♩ = 80

Guitar

Piano

mf *mp* *pp*

subito p

D m6 A 7/E

Guit.

Pno

D m6 A 7/E D m6 A 7/E D m6 A 7/E D m6 A 7/E D m6 A 7/E

p

©2011Dewagtere

Summertime

2
11

Guit.

Piano notation for measures 11-14 with chords: D m6, A7/E, G m, G m7, D m, E/D#

11

Pno

Detailed description: This system contains the first four measures of the piece. The guitar part (top) features a melodic line in the treble clef and a bass line in the bass clef. The piano part (bottom) consists of a right-hand melody and a left-hand accompaniment. Chord diagrams are provided above the piano staff for measures 11-14: D m6, A7/E, G m (3fr.), G m7, D m, and E/D# (7fr.).

15

Guit.

Piano notation for measures 15-18 with chords: D m6, A7/E, D m6, A7/E, D m6, A7/E

15

Pno

Detailed description: This system contains the next four measures. The guitar part continues with a melodic line and bass line. The piano part features a right-hand melody and left-hand accompaniment. Chord diagrams for D m6 and A7/E are shown above the piano staff for measures 15-18.

Summertime

19

Guit.

Pno

Dm F Dm7 G7 B \flat /E Dm

mp *dolce* *p*

23

Guit.

Pno

Dm6 A7/E Dm6 A7/E Dm13

mf *rit.*