



Bernard Dewagtere

France, SIN LE NOBLE

Summertime (Porgy and Bess) Gershwin, George

About the artist

Doctor in musicology, conductor and composer.

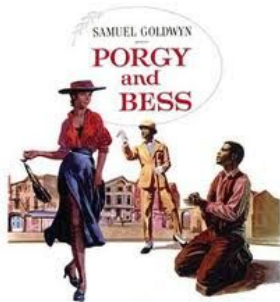
Compositions and arrangements from all eras, in all styles or musical genres and for any instrument or vocal training.

Qualification: PhD Musicology

Associate: SACEM - IPI code of the artist : 342990

Artist page : <https://www.free-scores.com/Download-PDF-Sheet-Music-bernard-dewagtere.htm>

About the piece



Title: Summertime [Porgy and Bess]
Composer: Gershwin, George
Arranger: Dewagtere, Bernard
Copyright: Copyright © Dewagtere, Bernard
Instrumentation: English horn, piano and/or guitar or organ
Style: Jazz

Comment: Gershwin began composing the song in December 1933, attempting to create his own spiritual in the style of the African American folk music of the period. The Ukrainian-Canadian composer and singer Alexis Kochan has suggested that he based the tune on a Ukrainian lullaby, Oi Khodyt Son Kolo Vikon (A Dream Passes By The Windows), which he heard in a New York City performance by Oleksander Koshetz's Ukrainian National Chorus in 1929.[6] Gershwin had...
(more online)

Bernard Dewagtere on [free-scores.com](https://www.free-scores.com)

LICENSE

This sheet music requires an authorization
- for public performances
- for use by teachers

Buy this license at :

<https://www.free-scores.com/licence-partition-uk.php?partition=38478>



- listen to the audio
- share your interpretation
- comment
- pay the licence
- contact the artist

Prohibited distribution on other website.

Summertime

Porgy and Bess

George Gershwin (1935)

Arr. : Bernard Dewagtere

Broadly ♩ = 80

Cor anglais

Musical score for Cor anglais and Piano, measures 1-6. The Cor anglais part is mostly rests. The Piano part starts with a melody in the right hand and accompaniment in the left hand. Dynamics include *mf*, *mp*, and *pp*. A *subito p* instruction is present. Chord diagrams for D m6 and A 7/E are provided.

Cor. A.

Musical score for Cor. A. and Pno, measures 7-11. The Cor. A. part has a melodic line with dynamics *mf* and *mp*. The Pno part provides accompaniment. Chord diagrams for D m6 and A 7/E are provided.

Cor. A.

Musical score for Cor. A. and Pno, measures 12-15. The Cor. A. part has a melodic line with dynamics *mp* and *mf*, including triplets. The Pno part has a complex accompaniment with triplets. Chord diagrams for G m (3fr.), G m7, D m, and E/D# (7fr.) are provided.

©2011Dewagtere

Summertime

2
16

Cor. A.

mp *mf*

D m6 A7/E D m6 A7/E D m6 A7/E D m

16

Pno

mp

Detailed description: This system covers measures 16 to 19. The Cor. A. part starts with a melodic line in treble clef, featuring a triplet of eighth notes in measure 17 and a dynamic change from *mp* to *mf*. The Pno. part consists of a steady accompaniment in the right hand with chords and a simple bass line in the left hand. Chord diagrams for D m6, A7/E, and D m are provided below the Cor. A. staff.

20

Cor. A.

mf

F D m7 G7 B^b/E D m

8fr. 6fr.

20

Pno

dolce
p

Detailed description: This system covers measures 20 to 23. The Cor. A. part continues the melodic line with triplets and a first ending bracket. The Pno. part features a *dolce* section starting in measure 22, marked with *p*. Chord diagrams for F (8fr.), D m7, G7, B^b/E (6fr.), and D m are provided below the Cor. A. staff.

24

Cor. A.

rit.

D m6 A7/E D m6 A7/E D m13

5fr.

24

Pno

p

Detailed description: This system covers measures 24 to 27. The Cor. A. part has a second ending bracket and a *rit.* marking. The Pno. part continues with a *p* dynamic. Chord diagrams for D m6, A7/E, and D m13 (5fr.) are provided below the Cor. A. staff.