



Bernard Dewagtere

France, SIN LE NOBLE

Summertime (Porgy and Bess) Gershwin, George

About the artist

Doctor in musicology, conductor and composer.

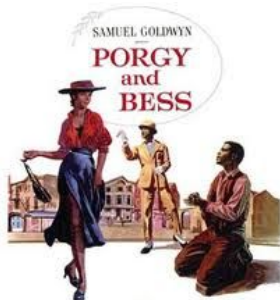
Compositions and arrangements from all eras, in all styles or musical genres and for any instrument or vocal training.

Qualification: PhD Musicology

Associate: SACEM - IPI code of the artist : 342990

Artist page : <https://www.free-scores.com/Download-PDF-Sheet-Music-bernard-dewagtere.htm>

About the piece



Title: Summertime [Porgy and Bess]

Composer: Gershwin, George

Arranger: Dewagtere, Bernard

Copyright: Copyright © Dewagtere, Bernard

Instrumentation: Accordeon, piano or organ or guitar

Style: Jazz

Comment: Gershwin began composing the song in December 1933, attempting to create his own spiritual in the style of the African American folk music of the period. The Ukrainian-Canadian composer and singer Alexis Kochan has suggested that he based the tune on a Ukrainian lullaby, Oi Khodyt Son Kolo Vikon (A Dream Passes By The Windows), which he heard in a New York City performance by Oleksander Koshetz's Ukrainian National Chorus in 1929.[6] Gershwin had...
(more online)

Bernard Dewagtere on [free-scores.com](https://www.free-scores.com)

LICENSE

This sheet music requires an authorization
- for public performances
- for use by teachers

Buy this license at :

<https://www.free-scores.com/licence-partition-uk.php?partition=38482>



- listen to the audio
- share your interpretation
- comment
- pay the licence
- contact the artist

Prohibited distribution on other website.

Summertime

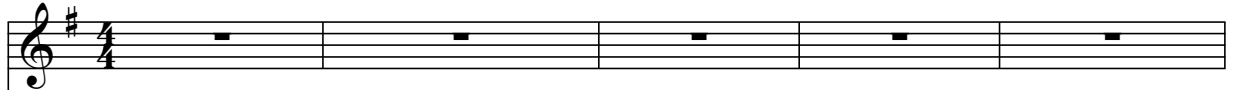
Porgy and Bess

George Gershwin (1935)

Arr. : Bernard Dewagtere

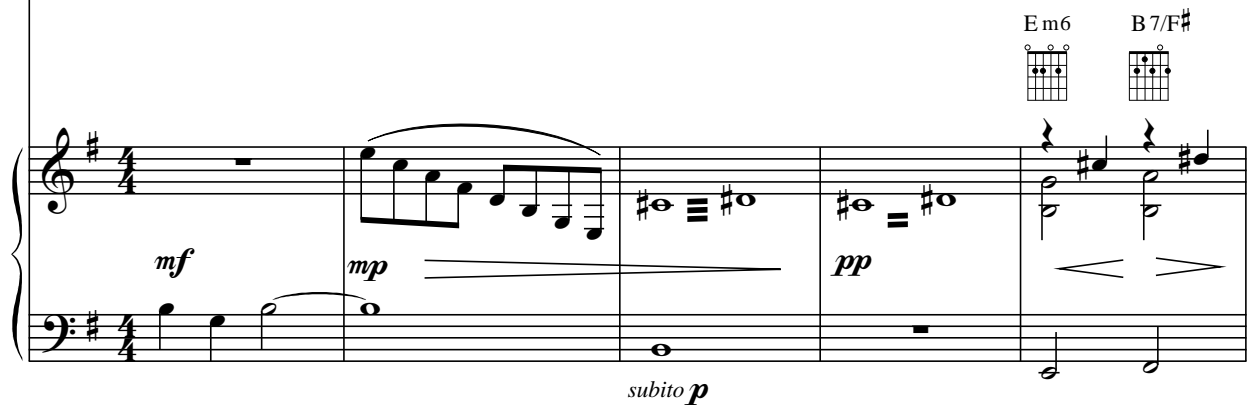
Broadly ♩ = 80

Accordeon



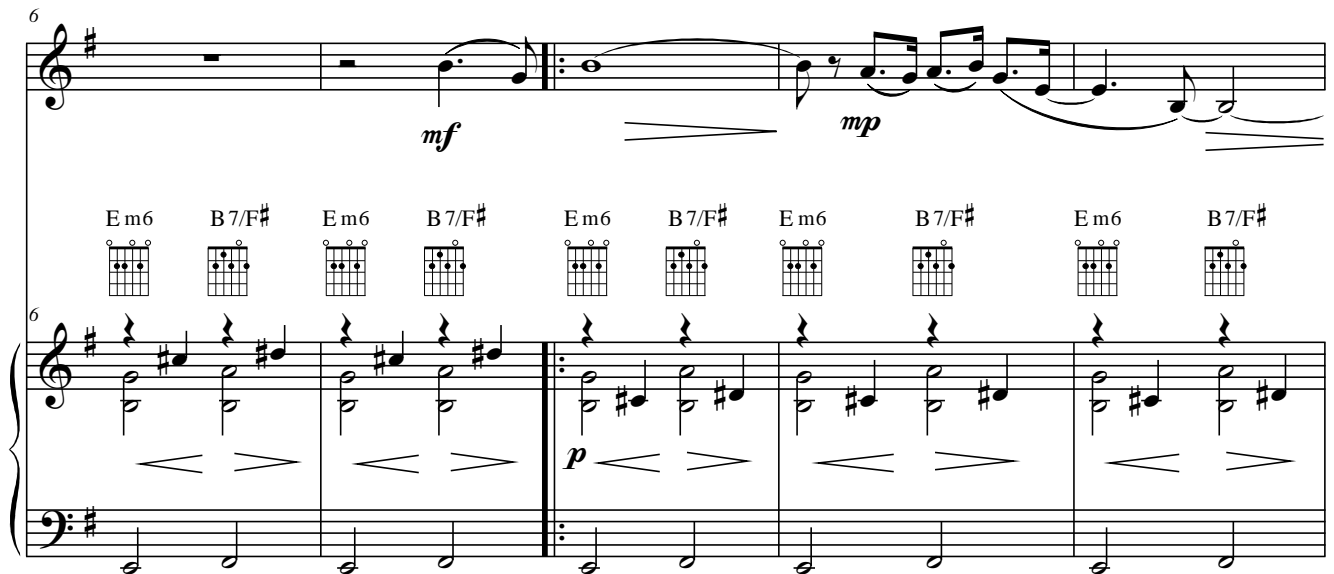
The Accordeon staff contains five measures of whole rests, indicating that the instrument is silent during this section.

Piano



The Piano staff features a melody in the right hand and a bass line in the left hand. Dynamics include *mf*, *mp*, *pp*, and *subito p*. Chord diagrams for *Em6* and *B7/F#* are provided above the staff.

Pno



The Piano staff continues the melody and bass line. Dynamics include *mf*, *mp*, and *p*. Chord diagrams for *Em6* and *B7/F#* are repeated above the staff.

Summertime

2
11

Em6 B7/F# Am A m7 Em F#/F 9fr.

Pno

16

Em6 B7/F# Em6 B7/F# Em6 B7/F# Em G Em7 A7 C/F# 3fr.

Pno

22

Em Em6 B7/F# Em6 B7/F# Em13 7fr.

Pno

dolce p