

# Respite

Joni Green

The musical score for "Respite" is written in 4/4 time. It consists of a vocal line and a piano accompaniment. The piano part is divided into two systems, each with a right-hand and left-hand part. The first system (measures 1-4) shows the vocal line starting with a whole rest, followed by a half note G4, and then a quarter note G4. The piano accompaniment begins with a rhythmic pattern of eighth notes in the right hand and quarter notes in the left hand. The second system (measures 5-8) continues the vocal line with a quarter note G4, a quarter note A4, a quarter note B4, and a quarter note C5. The piano accompaniment features a more complex rhythmic pattern with sixteenth notes and eighth notes. The third system (measures 9-12) shows the vocal line with a quarter note G4, a quarter note A4, a quarter note B4, and a quarter note C5. The piano accompaniment continues with a similar rhythmic pattern. The fourth system (measures 13-16) shows the vocal line with a quarter note G4, a quarter note A4, a quarter note B4, and a quarter note C5. The piano accompaniment concludes with a final chord in the right hand and a final note in the left hand.

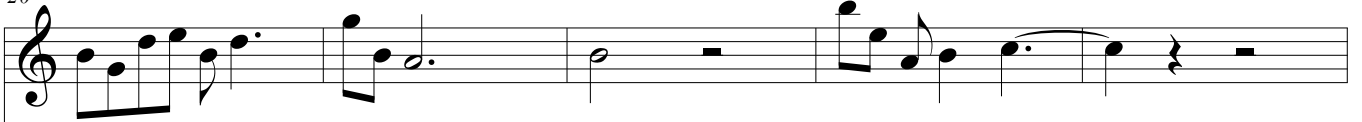
15



15

Musical staff for measures 15-19, piano accompaniment. The right hand plays a rhythmic pattern of eighth notes and quarter notes, while the left hand plays a bass line with quarter notes and rests. Measure 15 has a whole rest in the right hand. Measure 19 ends with a double bar line.

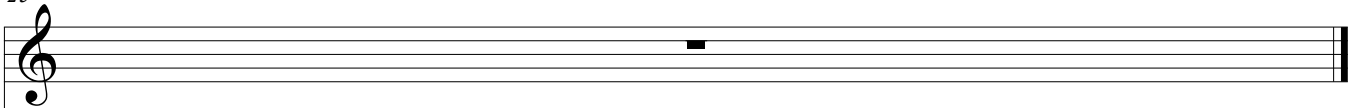
20



20

Musical staff for measures 20-24, piano accompaniment. The right hand plays a rhythmic pattern of eighth notes and quarter notes, while the left hand plays a bass line with quarter notes and rests. Measure 20 has a whole rest in the right hand. Measure 24 ends with a double bar line.

25



25

Musical staff for measure 25, piano accompaniment. The right hand has a whole rest. The left hand has a whole note G3. The piece ends with a double bar line.