

Jacob Handl

Veni redemptor gentium

S,A,T,T,B Recorders



Veni redemptor gentium

Jacob Handl
1550-1591

5

Musical score for the first system, measures 1-5. The score is for five voices: Soprano (S), Alto (A), Tenor 1 (T1), Tenor 2 (T2), and Bass (B). The key signature has one flat (B-flat) and the time signature is 2/4. The Soprano part has rests in measures 1-4 and a half note in measure 5. The Alto part has rests in measures 1-2 and quarter notes in measures 3-5. The Tenor 1 part has rests in measures 1-2 and quarter notes in measures 3-5. The Tenor 2 part has quarter notes in measures 1-2 and eighth notes in measures 3-5. The Bass part has rests in measures 1-4 and a half note in measure 5.

10

Musical score for the second system, measures 6-10. The Soprano part has quarter notes in measures 6-7, a half note in measure 8, and a quarter note in measure 9. The Alto part has quarter notes in measures 6-7, a half note in measure 8, and quarter notes in measure 9. The Tenor 1 part has quarter notes in measures 6-7, a half note in measure 8, and quarter notes in measure 9. The Tenor 2 part has quarter notes in measures 6-7, a half note in measure 8, and quarter notes in measure 9. The Bass part has quarter notes in measures 6-7, a half note in measure 8, and quarter notes in measure 9.

15

Musical score for the third system, measures 11-15. The Soprano part has quarter notes in measures 11-12, a half note in measure 13, and quarter notes in measures 14-15. The Alto part has quarter notes in measures 11-12, a half note in measure 13, and quarter notes in measure 14. The Tenor 1 part has quarter notes in measures 11-12, a half note in measure 13, and quarter notes in measure 14. The Tenor 2 part has quarter notes in measures 11-12, a half note in measure 13, and quarter notes in measure 14. The Bass part has quarter notes in measures 11-12, a half note in measure 13, and quarter notes in measure 14.

20

This system contains measures 15 through 20. It features five staves: four treble clefs and one bass clef. The music is in a minor key. Measure 15 starts with a treble clef staff containing a half note G4, a half note A4, and a half note B4. The bass clef staff has a whole rest. Measure 16 continues with similar patterns. Measure 17 has a treble clef staff with a half note G4, a half note A4, and a half note B4, and a bass clef staff with a whole note G3. Measure 18 has a treble clef staff with a half note G4, a half note A4, and a half note B4, and a bass clef staff with a whole note G3. Measure 19 has a treble clef staff with a half note G4, a half note A4, and a half note B4, and a bass clef staff with a whole note G3. Measure 20 has a treble clef staff with a half note G4, a half note A4, and a half note B4, and a bass clef staff with a whole note G3.

25

This system contains measures 21 through 25. It features five staves: four treble clefs and one bass clef. Measure 21 has a treble clef staff with a whole rest, a bass clef staff with a whole note G3, and a second treble clef staff with a whole note G4. Measure 22 has a treble clef staff with a whole rest, a bass clef staff with a whole note G3, and a second treble clef staff with a whole note G4. Measure 23 has a treble clef staff with a whole rest, a bass clef staff with a whole note G3, and a second treble clef staff with a whole note G4. Measure 24 has a treble clef staff with a whole rest, a bass clef staff with a whole note G3, and a second treble clef staff with a whole note G4. Measure 25 has a treble clef staff with a whole rest, a bass clef staff with a whole note G3, and a second treble clef staff with a whole note G4.

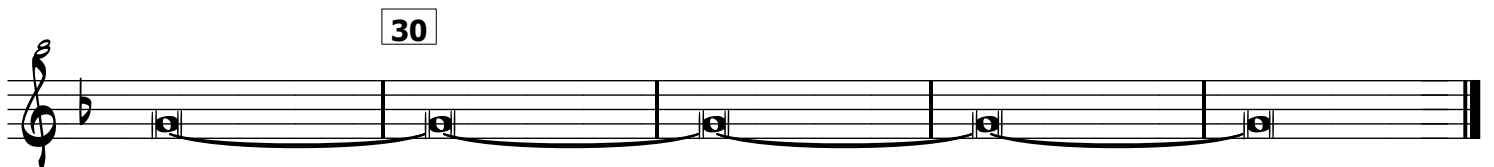
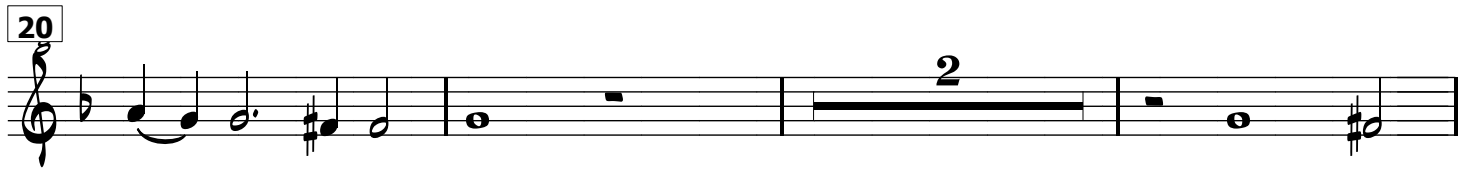
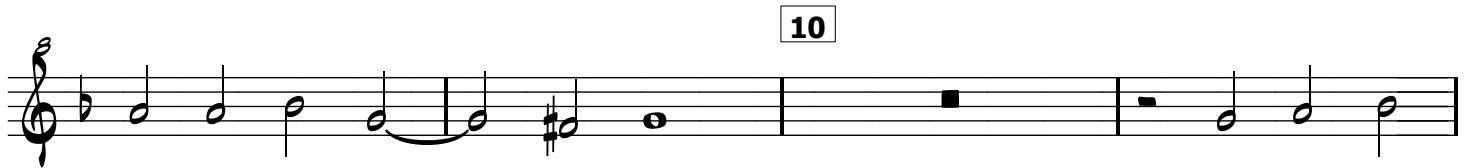
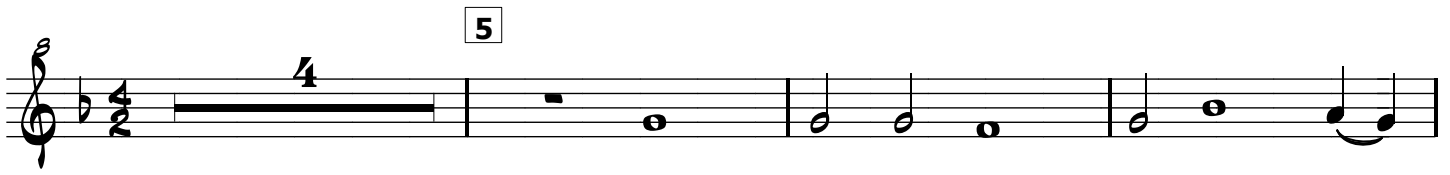
30

This system contains measures 26 through 30. It features five staves: four treble clefs and one bass clef. Measure 26 has a treble clef staff with a whole note G4, a bass clef staff with a whole note G3, and a second treble clef staff with a whole note G4. Measure 27 has a treble clef staff with a whole note G4, a bass clef staff with a whole note G3, and a second treble clef staff with a whole note G4. Measure 28 has a treble clef staff with a whole note G4, a bass clef staff with a whole note G3, and a second treble clef staff with a whole note G4. Measure 29 has a treble clef staff with a whole note G4, a bass clef staff with a whole note G3, and a second treble clef staff with a whole note G4. Measure 30 has a treble clef staff with a whole note G4, a bass clef staff with a whole note G3, and a second treble clef staff with a whole note G4.

Veni redemptor gentium

Soprano (Part 1)

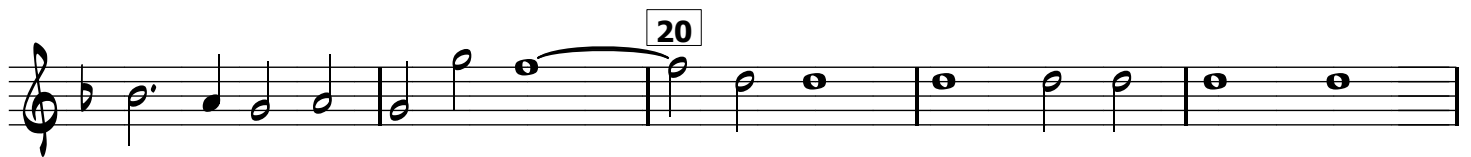
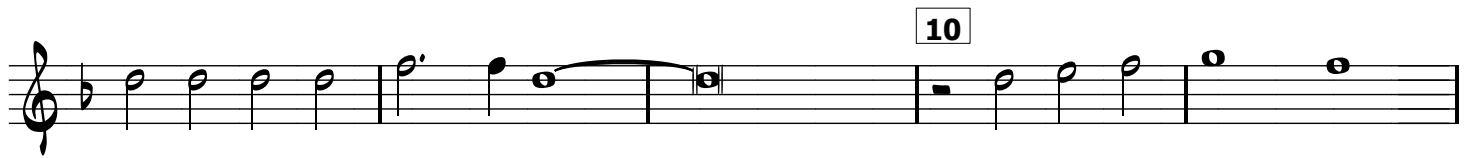
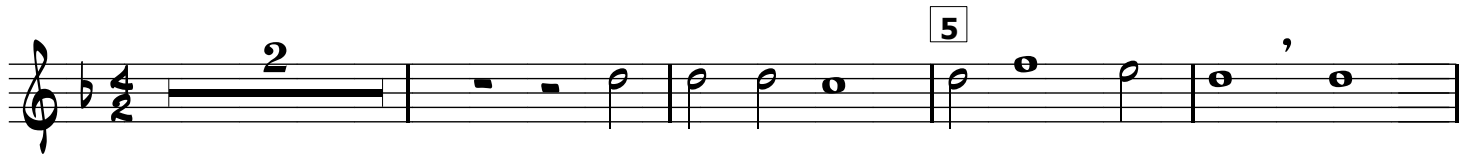
Jacob Handl
1550-1591



Veni redemptor gentium

Alto (Part 2)

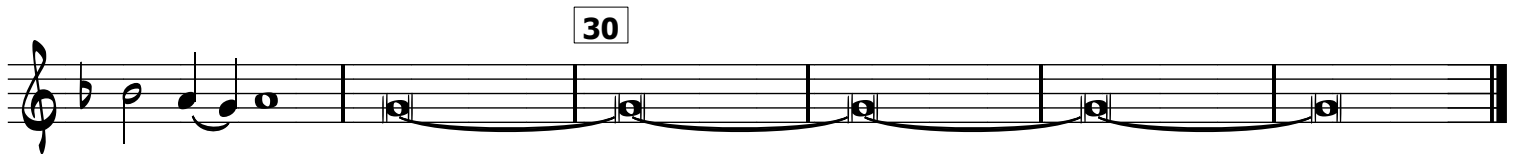
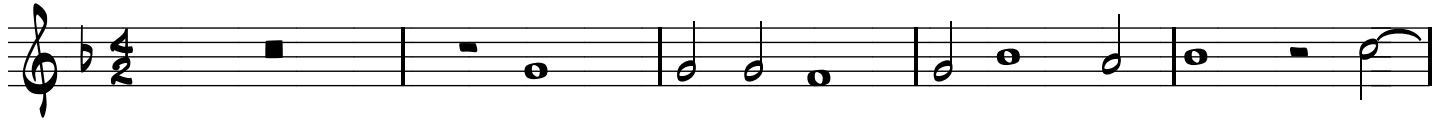
Jacob Handl
1550-1591



Veni redemptor gentium

Tenor 1 (Part 3)

Jacob Handl
1550-1591



Veni redemptor gentium

Tenor 2 (Part 4)

Jacob Handl
1550-1591

5



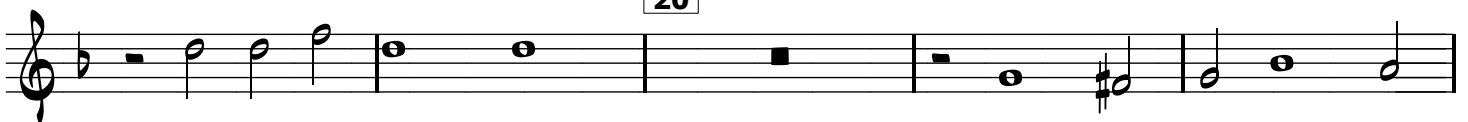
10



15



20



25



30



Veni redemptor gentium

Bass (Part 5)

Jacob Handl
1550-1591

