



Bernard Dewagtere

France, SIN LE NOBLE

German Dance No. 5 in Bb major (Hob. IX :5) Haydn, Joseph

About the artist

Doctor in musicology, conductor and composer.

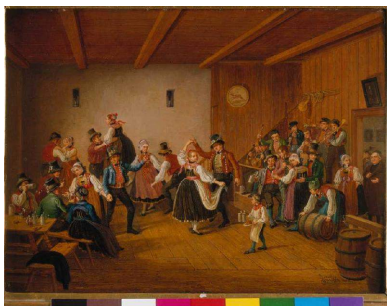
Compositions and arrangements from all eras, in all styles or musical genres and for any instrument or vocal training.

Qualification: PhD Musicology

Associate: SACEM - IPI code of the artist : 342990

Artist page : <https://www.free-scores.com/Download-PDF-Sheet-Music-bernard-dewagtere.htm>

About the piece



Title: German Dance No. 5 in Bb major [Hob. IX :5]
Composer: Haydn, Joseph
Arranger: Dewagtere, Bernard
Copyright: Copyright © Bernard Dewagtere
Publisher: Dewagtere, Bernard
Instrumentation: English horn and organ
Style: Modern classical

Bernard Dewagtere on [free-scores.com](https://www.free-scores.com)

LICENSE

This sheet music requires an authorization
- for public performances
- for use by teachers

Buy this license at :

<https://www.free-scores.com//license?p=aEJowQRptB>



- listen to the audio
- share your interpretation
- comment
- pay the licence
- contact the artist

Prohibited distribution on other website.

Danse Allemande N°5, en Sib Majeur

Hob. IX :5

F. J. Haydn (1732 -1809)

Transc. : Bernard Dewagtere

♩ = 96

Cor anglais

Orgue

This system contains the first three measures of the piece. The Cor anglais part is in the upper staff, and the Orgue part is in the lower two staves. The music is in 3/4 time and B-flat major. The Cor anglais part starts with a quarter note G4, followed by eighth notes A4-B4-C5, a quarter rest, and then eighth notes D5-E5-F5. The Orgue part features a steady eighth-note accompaniment in the bass and a melodic line in the treble.

Cor. A.

Orgue

This system contains measures 4 through 6. The Cor. A. part begins at measure 4 with a quarter note G4, followed by eighth notes A4-B4-C5, a quarter note D5, and eighth notes E5-F5. The Orgue part continues with the same accompaniment pattern as in the first system.

Cor. A.

Orgue

This system contains measures 7 through 9. The Cor. A. part starts at measure 7 with eighth notes G4-A4-B4-C5, followed by a quarter note D5, a quarter rest, and eighth notes E5-F5. A double bar line with repeat dots appears at the end of measure 8. In measure 9, the Cor. A. part plays eighth notes G4-A4-B4-C5, and the Orgue part has a dynamic marking of *sf* (sforzando) on the first note.

Danse Allemande N°5, en Sib Majeur

2
10

Cor. A.

sf

10

Musical score for Cor. A. measures 10-12. The score is in G major (one flat) and 2/4 time. It features a treble clef and a key signature of one flat. The music consists of eighth-note patterns in the right hand and quarter-note patterns in the left hand. A dynamic marking of *sf* (sforzando) is present above the first measure.

13

Cor. A.

sf *sf* *sf*

13

Musical score for Cor. A. measures 13-15. The score continues in G major and 2/4 time. It features a treble clef and a key signature of one flat. The music consists of eighth-note patterns in the right hand and quarter-note patterns in the left hand. Dynamic markings of *sf* (sforzando) are present above the first, second, and third measures.

16

Cor. A.

1. 2.

sf

16

Musical score for Cor. A. measures 16-17. The score continues in G major and 2/4 time. It features a treble clef and a key signature of one flat. The music consists of eighth-note patterns in the right hand and quarter-note patterns in the left hand. Dynamic markings of *sf* (sforzando) are present above the first measure. First and second endings are indicated by '1.' and '2.' above the notes.