



Tom Horn

Denmark

Practicetunes for altorecorder

About the artist

Denmark. Music teacher, jazzmusician, conductor for amateurbands and choirs. His instruments are recorder, flute and guitar

Visit iTunes to hear Tom Horns two albums: "Jazzrecorder" and "Arizona Road".

Artist page : <https://www.free-scores.com/Download-PDF-Sheet-Music-tom-horn.htm>

About the piece



Title:	Practicetunes for altorecorder
Composer:	Horn, Tom
Arranger:	Horn, Tom
Copyright:	public domain
Instrumentation:	Recorder Alto
Style:	Studies
Comment:	progressive practictunes for children and absolute beginners

Tom Horn on [free-scores.com](https://www.free-scores.com)

LICENSE

This sheet music requires an authorization

- for public performances
- for use by teachers

Buy this licence at :

<https://www.free-scores.com/licence-partition-uk.php?partition=11466>



- listen to the audio
- share your interpretation
- comment
- pay the licence
- contact the artist

Practicetunes for Alto recorder



Tom Horn

public domain - published by Tom Horn

The first tunes have the tones c, d og e

1



2



3



4

Musical notation for exercise 4, consisting of two staves in 4/4 time. The first staff contains a sequence of eighth notes: G4, A4, B4, C5, B4, A4, G4, F4, E4, D4, C4. The second staff contains a sequence of quarter notes: G4, A4, B4, C5, B4, A4, G4, F4, E4, D4, C4.

Now we are going to use the tones f and g

5

Musical notation for exercise 5, consisting of two staves in 4/4 time. The first staff contains a sequence of eighth notes: G4, A4, B4, C5, followed by a whole note G4, then eighth notes A4, B4, C5, D5, and a whole note G4. The second staff contains a sequence of quarter notes: G4, A4, B4, C5, D5, C5, B4, A4, G4, F4, E4, D4, C4.

6

Musical notation for exercise 6, consisting of two staves in 4/4 time. The first staff contains a sequence of quarter notes: G4, A4, B4, C5, D5, C5, B4, A4, G4, F4, E4, D4, C4. The second staff contains a sequence of quarter notes: G4, A4, B4, C5, D5, C5, B4, A4, G4, F4, E4, D4, C4.

11

Musical notation for exercise 11, consisting of four staves in 3/4 time. The first staff begins with a treble clef and a 3/4 time signature. The melody consists of quarter notes: G4, A4, B4, C5, B4, A4, G4, F4, E4, D4, C4. The second staff continues with quarter notes: C4, D4, E4, F4, G4, A4, B4, C5, B4, A4, G4, F4, E4, D4, C4. The third staff continues with quarter notes: C4, D4, E4, F4, G4, A4, B4, C5, B4, A4, G4, F4, E4, D4, C4. The fourth staff concludes with quarter notes: C4, D4, E4, F4, G4, A4, B4, C5, B4, A4, G4, F4, E4, D4, C4, ending with a double bar line.

Now we are going to use the tones b-flat and a

12

Musical notation for exercise 12, consisting of two staves in 4/4 time with a key signature of one flat (B-flat). The first staff begins with a treble clef and a 4/4 time signature. The melody consists of quarter notes: Bb4, C5, D5, Eb5, D5, C5, Bb4, A4, G4, F4, E4, D4, C4. The second staff continues with quarter notes: C4, D4, E4, F4, G4, A4, Bb4, C5, Bb4, A4, G4, F4, E4, D4, C4, ending with a double bar line.

13

Musical score for exercise 13, consisting of four staves of music. The key signature is one flat (Bb) and the time signature is 3/4. The melody consists of quarter and eighth notes, ending with a half note.

14

Musical score for exercise 14, consisting of two staves of music. The key signature is one flat (Bb) and the time signature is 4/4. The melody consists of quarter and eighth notes, ending with a half note.

Here comes the 2 darkest tones: g and f

15

Exercise 15 is written on two staves in 4/4 time with a key signature of one flat. The melody consists of quarter and eighth notes, ending with a double bar line.

16

Exercise 16 is written on two staves in 4/4 time with a key signature of one flat. The melody consists of quarter and eighth notes, ending with a double bar line.

17

Exercise 17 is written on four staves in 3/4 time with a key signature of one flat. The melody consists of quarter and eighth notes, ending with a double bar line.

18

21

Exercise 21 is written in 4/4 time with a key signature of one flat (Bb). The first staff contains the first two measures, and the second staff contains the next two measures. The melody consists of eighth and quarter notes.

22

Exercise 22 is written in 4/4 time with a key signature of one flat (Bb). The first staff contains the first two measures, and the second staff contains the next two measures. The melody features eighth and quarter notes with some beamed eighth notes.

23

Exercise 23 is written in 4/4 time with a key signature of one flat (Bb). The first staff contains the first two measures, and the second staff contains the next two measures. The melody is composed of eighth and quarter notes.

24

Tom Horn: Practicetunes for alto recorder

Two staves of musical notation for practice tune 24. The key signature is one flat (F major), and the time signature is 2/4. The melody consists of eighth and quarter notes, with a final whole note chord.

25

Two staves of musical notation for practice tune 25. The key signature is one flat (F major), and the time signature is 3/4. The melody features a mix of quarter and eighth notes, ending with a whole note chord.

26

Four staves of musical notation for practice tune 26. The key signature is one flat (F major), and the time signature is 3/4. The melody is more complex, involving sixteenth and eighth notes, and concludes with a whole note chord.

Here comes b-sharp

27

Exercise 27 is written in 4/4 time with a key signature of one flat (B-flat). The first staff contains the following notes: G4, A4, B-flat4, A4, G4, F4, E4, D4, C4. The second staff contains: D4, E4, F4, G4, A4, B-flat4, A4, G4, F4, E4, D4, C4.

28

Exercise 28 is written in 4/4 time with a key signature of one flat (B-flat). The first staff contains: G4, A4, B-flat4, A4, G4, F4, E4, D4, C4. The second staff contains: D4, E4, F4, G4, A4, B-flat4, A4, G4, F4, E4, D4, C4. The third staff contains: G4, A4, B-flat4, A4, G4, F4, E4, D4, C4. The fourth staff contains: D4, E4, F4, G4, A4, B-flat4, A4, G4, F4, E4, D4, C4.

29



30



31

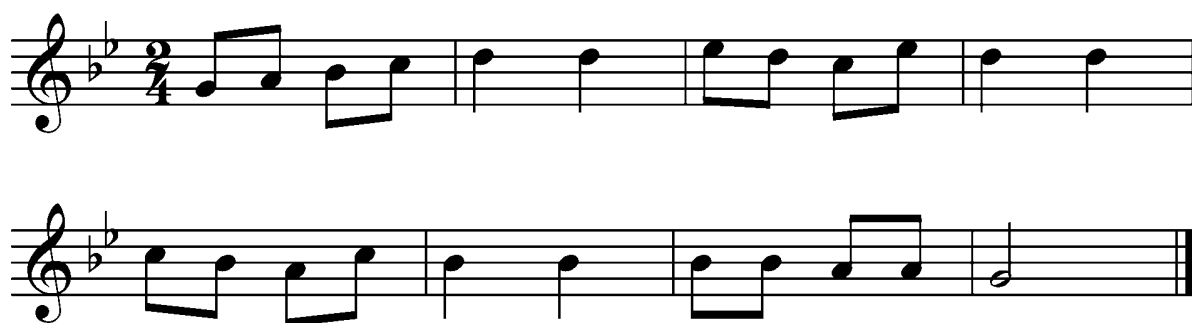
Four staves of musical notation in 3/4 time. The first staff contains measures 1-4. The second staff contains measures 5-8. The third staff contains measures 9-12. The fourth staff contains measures 13-16 and ends with a double bar line.

Again a new tone: e-flat

32

Two staves of musical notation in 3/4 time, starting with a key signature of one flat (B-flat). The first staff contains measures 17-20. The second staff contains measures 21-24 and ends with a double bar line.

33 - in minor



34- the same in major



Tom Horn: Practicetunes for alto recorder

Four staves of musical notation in 3/4 time, key of B-flat major. The first staff begins with a treble clef, a key signature of two flats (B-flat and E-flat), and a 3/4 time signature. The melody consists of quarter notes and eighth notes, ending with a half note. The second staff continues the melody with quarter notes and eighth notes. The third staff continues with quarter notes and eighth notes. The fourth staff concludes the phrase with quarter notes and eighth notes, ending with a double bar line.

36

Two staves of musical notation in 4/4 time, key of B-flat major. The first staff begins with a treble clef, a key signature of two flats (B-flat and E-flat), and a 4/4 time signature. The melody consists of quarter notes and eighth notes. The second staff continues the melody with quarter notes and eighth notes, ending with a double bar line.

The last new tone: High a

38

Exercise 38 is written in 4/4 time on two staves. The first staff begins with a treble clef, a key signature of one flat (Bb), and a 4/4 time signature. The melody consists of quarter notes: G4, A4, Bb4, C5, D5, E5, F5, G5, F5, E5, D5, C5, Bb4, A4, G4. The second staff continues the melody with quarter notes: F5, E5, D5, C5, Bb4, A4, G4, F5, E5, D5, C5, Bb4, A4, G4, F5, E5, D5, C5, Bb4, A4, G4. The piece concludes with a double bar line.

39

Exercise 39 is written in 4/4 time on four staves. The first staff begins with a treble clef, a key signature of one flat (Bb), and a 4/4 time signature. The melody consists of quarter notes: G4, A4, Bb4, C5, D5, E5, F5, G5, F5, E5, D5, C5, Bb4, A4, G4. The second staff continues with quarter notes: F5, E5, D5, C5, Bb4, A4, G4, F5, E5, D5, C5, Bb4, A4, G4, F5, E5, D5, C5, Bb4, A4, G4. The third staff continues with quarter notes: F5, E5, D5, C5, Bb4, A4, G4, F5, E5, D5, C5, Bb4, A4, G4, F5, E5, D5, C5, Bb4, A4, G4. The fourth staff concludes with quarter notes: F5, E5, D5, C5, Bb4, A4, G4, F5, E5, D5, C5, Bb4, A4, G4, F5, E5, D5, C5, Bb4, A4, G4. The piece concludes with a double bar line.