



Marc Lejeune

Belgium, Galera

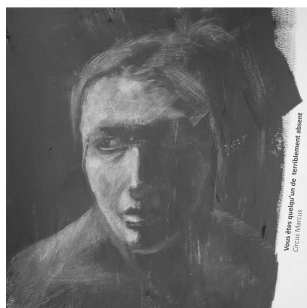
L'enclume

About the artist

Born in 2001 from the fingers of the belgian Marc Lejeune, Circus Marcus is a pianistic project with a minimalist and dreamlike universe including a "little" dramatic touch.

Artist page : <https://www.free-scores.com/Download-PDF-Sheet-Music-circusmarcus.htm>

About the piece



Title: L'enclume
Composer: Lejeune, Marc
Arranger: Lejeune, Marc
Copyright: Creative Commons BY-NC - Circus Marcus (Marc Lejeune)
Publisher: Lejeune, Marc
Instrumentation: Piano solo
Style: Contemporary

Marc Lejeune on [free-scores.com](https://www.free-scores.com)

LICENSE

This sheet music requires an authorization

- for public performances
- for use by teachers

Buy this license at :

<https://www.free-scores.com/licence-partition-uk.php?partition=96745>



- listen to the audio
- share your interpretation
- comment
- pay the licence
- contact the artist

L'enclume

Circus Marcus / Marc Lejeune

Lent

Avec une légèreté lourde de sens

Measures 1-5 of the piece. The music is in 2/4 time with a key signature of two flats (B-flat and E-flat). The tempo is marked 'Lent' and the performance instruction is 'Avec une légèreté lourde de sens'. The dynamic is marked *mp*. The right hand features a melodic line with a slur over measures 1-5, while the left hand provides harmonic support with chords and single notes.

Measures 6-11. The right hand continues the melodic line with a slur. The left hand features a sequence of chords in the bass line, with a crescendo hairpin indicating an increase in volume towards the end of the system.

Measures 12-16. The right hand continues the melodic line with a slur. The left hand continues with chords and single notes, maintaining the harmonic structure.

Measures 17-20. The right hand features a melodic line with a slur and includes two triplet markings (indicated by a '3' above the notes). The left hand continues with chords and single notes. The dynamic is marked *mf*.

Measures 21-24. The right hand features a melodic line with a slur and includes two triplet markings (indicated by a '3' above the notes). The left hand continues with chords and single notes. The dynamic is marked *rfz*.

26

30

35

39

43

47

51 *Ralenti*

mp

57

63

mf 3 3

68

3 3 *rf*

72 *Ralenti*

3 3