



Peter Machajdik

Composer, Teacher

Slovakia

About the artist

Peter Machajdik is a composer of chamber, orchestral and electro-acoustic music. He often takes very simple materials and a simple mode of expression, and creates a vibrant and challenging sonic palette. His music, commonly characterised as emotive, imaginary and hypnotic, has been performed to international audiences on five continents for over twenty five years and has been featured at festivals such as Inventionen in Berlin, New Work in Calgary, Early Music Festival in Boston, LakeComo Festival, Ostrava Days, Nuovi Spazi Musicali in Rome, Young Euro Classic in Berlin, Hörgänge at the Konzerthaus in Vienna, Bolzano Festival, Sagra Musicale Malatestiana in Rimini, Audio Art Festival in Cracow, Contrasts in Lviv, Melos-Ethos Festival, and the Bratislava Music Festival.

Machajdik has worked with many leading orchestras and ensembles, including the Janákček Philharmonic Orchestra, Nordwestdeutsche Philharmonie, I.J.Paderewski State P... (more online)

Associate: GEMA - IPI code of the artist : 910577

Artist page : <https://www.free-scores.com/Download-PDF-Sheet-Music-bluedeepermusic.htm>

About the piece



Title: KYRIE for mixed choir a cappella [SATB]
Composer: Machajdik, Peter
Arranger: Machajdik, Peter
Copyright: Copyright © Peter Machajdik
Publisher: Machajdik, Peter
Instrumentation: Choral SATB a cappella
Style: Religious - Sacred
Comment: KYRIE [2011]; c. 4'00" World première: 3 June 2012, Church, Volda, Norway Volda Vokal, cond. Magnar Åm

Peter Machajdik on [free-scores.com](https://www.free-scores.com)

LICENSE

This sheet music requires an authorization

:

- for public performances
- for use by teachers

Buy this license at :

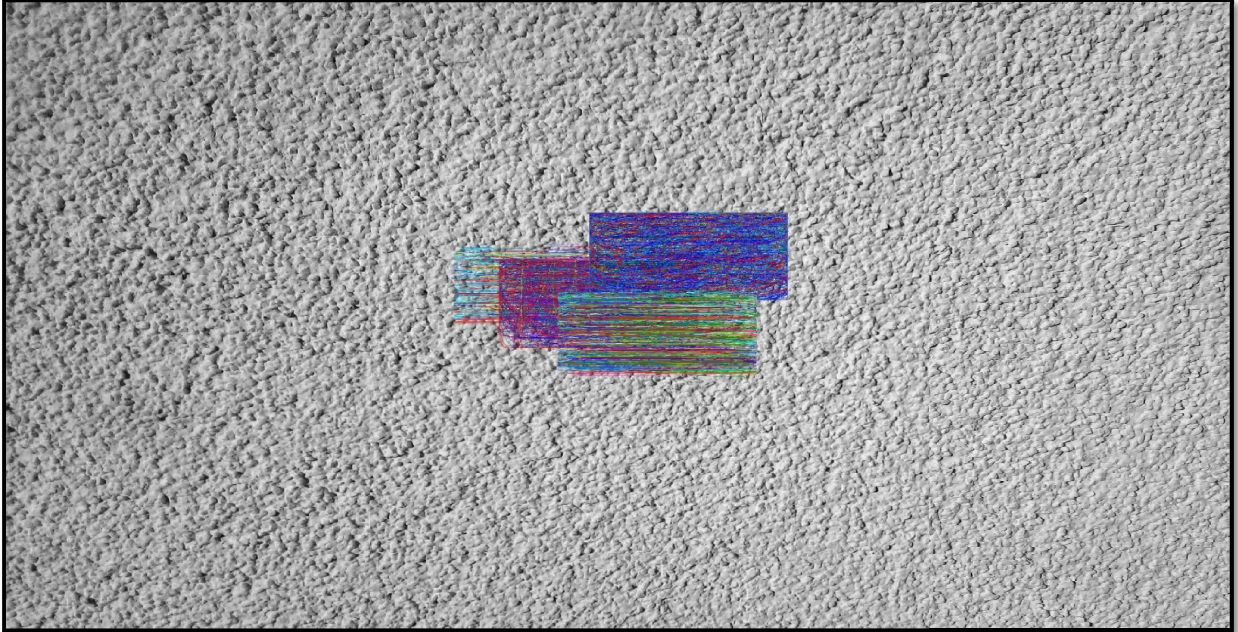
<https://www.free-scores.com/license?p=aWr5nIHkIS>



- listen to the audio
- share your interpretation
- comment
- pay the licence
- contact the artist

Prohibited distribution on other website.

Peter Machajdík



KYRIE

per coro misto (SATB)

www.machajdik.com

free-scores.com

Peter Machajdík

KYRIE

for mixed choir a cappella (SATB)

2011

World premiere:

3 June 2012
Church Volda, Norway
Volda Vokal
Magnar Åm, conductor

c. 4'00"

KYRIE

Peter Machajdik

makh.eye.deek

マハイジック

马海迪克

Lento ♩ = 46

Soprano *pp legato* *poco a poco crescendo sin al mf*
Ky - ri - e, Ky - ri - e, Ky - ri - e, Ky -

Alto *pp legato* *poco a poco crescendo sin al mf*
Ky - ri Ky - ri - e, Ky - ri - e, Ky - ri - e,

Tenore *pp legato* *poco a poco crescendo sin al mf*
8 Ky - ri - e, Ky - ri - e, Ky - ri - e, Ky - ri -

Basso *pp legato* *poco a poco crescendo sin al mf*
Ky - ri - e, Ky - ri - e, Ky - ri - e, Ky -

12 *mf*
S ri - e, Ky - ri - e, Ky - ri - e, Ky - ri - e, Ky -

A *mf*
Ky - ri - e, Ky - ri - e, Ky - ri - e, Ky - ri - e,

T *mf*
8 e, Ky - ri - e, Ky - ri - e, Ky - ri - e, Ky - ri -

B *mf*
ri - e, Ky - ri - e, Ky - ri - e, Ky - ri - e, Ky -

24
S ri - e, Ky - ri - e, Ky - ri - e, Ky -

A Ky - ri - e, Ky - ri - e, Ky - ri - e, Ky - ri - e,

T e, Ky - ri - e, Ky - ri - e, Ky - ri - e, Ky - ri -

B ri - e, Ky - ri - e, Ky - ri - e, Ky -

36

S
ri - e, Ky - ri - e, Ky - ri - e *ff*

A
Ky - ri - e, Ky - ri - e, Ky - ri Ky - ri - e *ff*

T
8 e, Ky - ri - e, Ky - ri - e Ky - ri - e *ff*

B
- ri - e, Ky - ri - e, Ky - ri - e *ff*

48

S
Ky - ri - e e - lei - son Ky - ri - e e - lei - son

A
Ky - ri - e e - lei - son Ky - ri - e e - lei - son

T
8 Ky - ri - e e - lei - son Ky - ri - e e - lei - son

B
Ky - ri - e e - lei - son Ky - ri - e e - lei - son

53

S
Ky - ri - e Ky - ri - e

A
Ky - ri - e Ky - ri - e

T
8 Ky - ri - e Ky - ri - e

B
Ky - ri - e Ky - ri - e

56

mp *p*

S Ky - ri - e Ky - ri - e

A Ky - ri - e Ky - ri - e

T Ky - ri - e Ky - ri - e

B Ky - ri - e Ky - ri - e

60

pp

S Ky - ri - e

A Ky - ri - e

T Ky - ri - e

B Ky - ri - e

silenzio assoluto

Please send information about any public performance(s) of **KYRIE** before the concert(s) to the composer via www.machajdik.com/public.html

Your information about the concert(s) will be put on Peter Machajdik's official website www.machajdik.com

According to the General Terms and Conditions you need to apply all concert information to the author rights society (performance rights organization) in the country of the public performance of **KYRIE** [e.g., GEMA, PRS, PPL, AKM, SACEM, ASCAP, SIAE, BUMA STEMRA, SESAC, SOCAN, CMRRA, SADAIC, SABAM, APRA, IMRO, SUISA, UCMR, EAU, TONO, KODA, SOZA, OSA, TEOSTO, STIM, ZAIKS, LATGA, MSG, STEF, JASRAC 「日本音楽著作権協会」, AKKA-LAA, CASH (香港作曲家及作詞家協會), ARTISJUS, SOKOJ, WAMI, SAZAS, UACRR (УААСП), RAO (РАО), ВОИС, KOMCA (한국음악저작권협회), MCSC (中国音乐著作权协会), ACUM (א"ק"א), SGAE].

For a recording of **KYRIE** you are kindly requested to send a sample of a sound file to Peter Machajdik via www.machajdik.com/public.html

Thanks!

For information about the composer, please visit www.machajdik.com

Composed with 