

# Passagagli per Petronilla - 1700

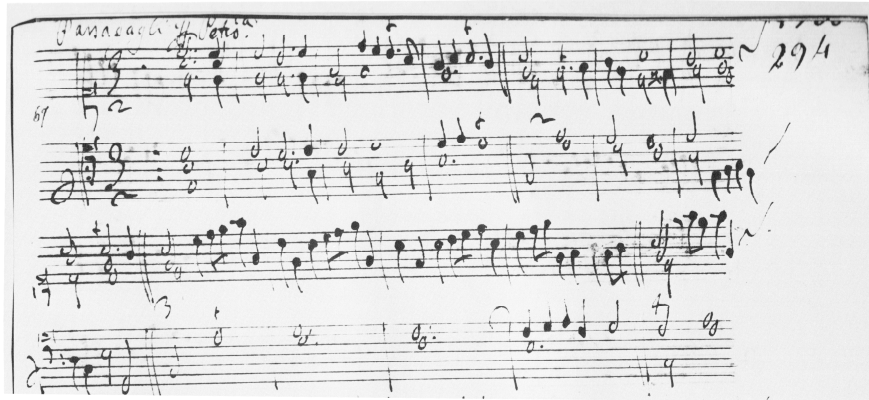
Source: S.B.P.K. Landsberg 215

edited by

Maurizio Machella

**Bernardo PASQUINI**

1637-1710



(tr)

A musical score for the first system of the piece. It consists of two staves, treble and bass clef. The time signature is 3/2. The music features a series of chords and single notes, with trills marked above several notes. The first measure has a whole note chord, followed by two measures of half notes, and a final measure with a whole note chord and a trill.

5 2.

A musical score for the second system of the piece, starting at measure 5. It consists of two staves, treble and bass clef. The time signature is 3/2. The music continues with chords and single notes, including trills. The first measure has a whole note chord with a trill, followed by two measures of half notes, and a final measure with a whole note chord and a trill.

9 3.

A musical score for the third system of the piece, starting at measure 9. It consists of two staves, treble and bass clef. The time signature is 3/2. The music features a series of eighth notes in the treble clef and chords in the bass clef, with trills marked above several notes. The first measure has a whole note chord with a trill, followed by two measures of eighth notes, and a final measure with a whole note chord and a trill.

## 4.

13

Musical score for exercise 4, measures 13-16. The piece is in 4/4 time. The right hand (treble clef) features a melodic line with eighth and sixteenth notes, including some grace notes. The left hand (bass clef) provides a harmonic accompaniment with chords and single notes.

## 5.

17

Musical score for exercise 5, measures 17-20. The right hand (treble clef) plays a series of chords and dyads. The left hand (bass clef) has a rhythmic pattern of eighth notes, starting with a triplet.

## 6.

21

Musical score for exercise 6, measures 21-24. The right hand (treble clef) features a melodic line with eighth notes and some trills. The left hand (bass clef) has a rhythmic pattern of eighth notes, with trills in the first measure.

## 7.

25

Musical score for exercise 7, measures 25-28. The right hand (treble clef) has a melodic line with eighth notes and some trills. The left hand (bass clef) has a rhythmic pattern of eighth notes, with trills in the first measure.

## 8.

29

Musical score for exercise 8, measures 29-32. The right hand (treble clef) features a melodic line with eighth notes and some trills. The left hand (bass clef) has a rhythmic pattern of eighth notes, with trills in the first measure.

9.

33

Exercise 9, measures 33-36. The treble clef contains chords and eighth-note runs. The bass clef contains eighth-note runs and a trill (tr).

10.

37

Exercise 10, measures 37-40. The treble clef contains chords with grace notes. The bass clef contains eighth-note runs and trills (tr).

11.

Exercise 11, measures 41-43. The treble clef contains eighth-note runs and chords. The bass clef contains eighth-note runs and trills (tr).

12.

44

Exercise 12, measures 44-47. The treble clef contains eighth-note runs and trills (tr). The bass clef contains eighth-note runs and trills (tr).

segue 13.

48

Exercise 13, measures 48-51. The treble clef contains eighth-note runs and trills (tr). The bass clef contains chords.

*fin qui.*

14.

53

15.

57

16.

61

17.

65

67