



Stanislav Petrik

Slovakia, Bratislava

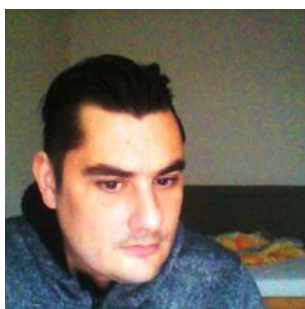
Piece for James

About the artist

Slovakian composer Stanislav Petrik 1980 was born and raised in Bratislava, where he began accordion lessons at ten. He continued his studies at the Music Conservatory in Bratislava. Later he also studied percussion instruments and piano. In 2007 he began serious composition studies with Peter Machajdik. Since then he has composed a number of chamber, orchestral and vocal works. Stanislav Petrik is a post-minimalist whose works draw on European and American musical traditions. His music is repetitive and similar to the minimalists. But unlike the minimalists, he uses longer melodic patterns and more complex European harmonies.

Artist page : <https://www.free-scores.com/Download-PDF-Sheet-Music-stanislavpetrik.htm>

About the piece



Title: Piece for James
Composer: Petrik, Stanislav
Arranger: Petrik, Stanislav
Copyright: Copyright © SOZA
Publisher: Petrik, Stanislav
Instrumentation: Piano solo
Style: Modern classical

Stanislav Petrik on [free-scores.com](https://www.free-scores.com)



This work is not Public Domain. You must contact the artist for any use outside the private area.

Prohibited distribution on other website.



- listen to the audio
- share your interpretation
- comment
- contact the artist

Piece for James

Stanislav Petrik

$\text{♩} = 120$

cantabile

Piano

ff

The first system of the piano score consists of two staves. The right-hand staff is in treble clef with a key signature of one sharp (F#) and a 4/4 time signature. It begins with a *cantabile* marking and a dynamic of *ff*. The left-hand staff is in bass clef with a 4/4 time signature. The music features a series of chords and single notes, with some notes marked with accents and slurs.

The second system of the piano score consists of two staves. The right-hand staff is in treble clef with a key signature of one sharp (F#) and a 4/4 time signature. It begins with a *espress.* marking and a dynamic of *ff*. The left-hand staff is in bass clef with a 4/4 time signature. The music features a series of chords and single notes, with some notes marked with accents and slurs. There are asterisks and *ped.* markings below the staff.

The third system of the piano score consists of two staves. The right-hand staff is in treble clef with a key signature of one sharp (F#) and a 4/4 time signature. It begins with a *ff* marking. The left-hand staff is in bass clef with a 4/4 time signature. The music features a series of chords and single notes, with some notes marked with accents and slurs. There are asterisks and *ped.* markings below the staff.

The fourth system of the piano score consists of two staves. The right-hand staff is in treble clef with a key signature of one sharp (F#) and a 4/4 time signature. It begins with a *ff* marking. The left-hand staff is in bass clef with a 4/4 time signature. The music features a series of chords and single notes, with some notes marked with accents and slurs. There are asterisks and *ped.* markings below the staff.

Piano score for measures 9-12. The system consists of two staves: Treble and Bass. Measure 9 starts with a 4/4 time signature. Measure 10 has a 6/4 time signature. Measure 11 has a 4/4 time signature. Measure 12 has a 6/4 time signature. The bass line features complex rhythmic patterns with slurs and accents. The treble line has chords and rests.

Piano score for measures 13-14. The system consists of two staves: Treble and Bass. Measure 13 has a 4/4 time signature. Measure 14 has a 4+3/16 time signature. The bass line continues with rhythmic patterns. The treble line has chords and rests. Pedal markings (Ped.) and asterisks (*) are present below the bass staff.

Piano score for measures 15-16. The system consists of two staves: Treble and Bass. Measure 15 has a 4+3/16 time signature and is marked *espress.* and *8va*. Measure 16 has a 4/4 time signature. The bass line has a complex rhythmic pattern. The treble line has chords and rests. Pedal markings (Ped.) and asterisks (*) are present below the bass staff.

Piano score for measures 16-17. The system consists of two staves: Treble and Bass. Measure 16 has a 4/4 time signature. Measure 17 has a 6/4 time signature. The bass line has a complex rhythmic pattern. The treble line has chords and rests. Pedal markings (Ped.) and asterisks (*) are present below the bass staff.

18

Pno.

fff

Ped. * Ped. * Ped. * Ped. *

20

Pno.

8va

Ped. *

22

Pno.

8va

Ped. *

24

Pno.

Ped. * Ped. *

Pno.

26 *dolce*

mp

gva

27

Pno.

28

Leg.

29

Pno.

30

ffff

Leg.

31

Pno.

32 *molto espressivo*

Leg.

33

Pno.

Measures 33-34. Treble clef, 8/8 time signature. Bass clef, 8/8 time signature. The piece is in G major. Measure 33 contains a complex rhythmic pattern with many beamed eighth notes and sixteenth notes, including triplets. Measure 34 is a whole rest. Performance markings include accents (>) and dynamic markings *ped.* and ** ped.* under the bass line.

Pno.

Measures 35-36. Treble clef, 8/8 time signature. Bass clef, 8/8 time signature. The piece is in G major. Measure 35 contains a complex rhythmic pattern with many beamed eighth notes and sixteenth notes, including triplets. Measure 36 is a whole rest. Performance markings include accents (>) and dynamic markings *ped.* and ** ped.* under the bass line.

Pno.

cantabile
37
ff

Measures 37-38. Treble clef, 5/4 time signature. Bass clef, 5/4 time signature. The piece is in G major. Measure 37 contains a complex rhythmic pattern with many beamed eighth notes and sixteenth notes, including triplets. Measure 38 is a whole rest. Performance markings include accents (>) and dynamic markings *ped.* under the bass line.

Pno.

39
espress.

Measures 39-40. Treble clef, 4/4 time signature. Bass clef, 4/4 time signature. The piece is in G major. Measure 39 contains a complex rhythmic pattern with many beamed eighth notes and sixteenth notes, including triplets. Measure 40 is a whole rest. Performance markings include accents (>) and dynamic markings ** ped.* under the bass line.

Piano score for measures 41-43. The system consists of two staves: a treble clef staff and a bass clef staff. Measure 41 is in 3/8 time, followed by measures 42 and 43 in 6/4 time. The music features chords and melodic lines with accents and slurs. Performance markings include *ped.* and asterisks (*) below the bass staff.

Piano score for measures 44-45. The system consists of two staves: a treble clef staff and a bass clef staff. Measure 44 is in 5/4 time, followed by measure 45 in 6/4 time. The music features chords and melodic lines with accents and slurs. Performance markings include *ped.* and asterisks (*) below the bass staff.

Piano score for measures 46-47. The system consists of two staves: a treble clef staff and a bass clef staff. Measure 46 is in 4/4 time, followed by measure 47 in 6/4 time. The music features chords and melodic lines with accents and slurs. Performance markings include *ped.* and asterisks (*) below the bass staff.

Piano score for measures 48-49. The system consists of two staves: a treble clef staff and a bass clef staff. Measure 48 is in 6/4 time, followed by measure 49 in 4/4 time. The music features chords and melodic lines with accents and slurs. Performance markings include *ped.* and asterisks (*) below the bass staff.

49 *8va* *dolce*
Pno. *mp*
Leg. *

51 *espress.*
Pno. *ff*
Leg. *

53
Pno. *Leg.* *

55 *ffff* *ff* *8va*
Pno. *Leg.* *

Piano score for measures 58-61. The system consists of two staves (treble and bass clef). Measure 58 is a whole rest in both hands. Measure 59 has a 3/4 time signature and features a melodic line in the bass clef starting on G4, moving up stepwise to D5. Measure 60 has a 4/4 time signature and is a whole rest. Measure 61 has a 3/4 time signature and features a complex melodic line in the treble clef with many accents (>). The word *Ped.* is written below the bass staff in measures 59 and 61, and an asterisk (*) is placed below the bass staff in measure 60.

Piano score for measures 62-64. The system consists of two staves. Measure 62 has a 2/4 time signature and features a melodic line in the treble clef. Measure 63 has a 2/4 time signature and features a melodic line in the bass clef. Measure 64 has a 3/4 time signature and features a melodic line in the bass clef with a long slur. The word *Ped.* is written below the bass staff in measure 64, and asterisks (*) are placed below the bass staff in measures 62, 63, and 64.

Piano score for measures 65-67. The system consists of two staves. Measure 65 has a 2/4 time signature and features a melodic line in the treble clef. Measure 66 has a 6/4 time signature and features a melodic line in the bass clef. Measure 67 has a 5/4 time signature and features a melodic line in the bass clef. The word *Qua* is written above the treble staff in measure 66. The word *Ped.* is written below the bass staff in measures 65 and 67, and asterisks (*) are placed below the bass staff in measures 66 and 67.

Piano score for measures 68-71. The system consists of two staves. Measure 68 has a 5/4 time signature and features a melodic line in the treble clef. Measure 69 has a 2/4 time signature and features a melodic line in the bass clef. Measure 70 has a 2/4 time signature and features a melodic line in the bass clef with a long slur. Measure 71 has a 3/4 time signature and features a melodic line in the bass clef. The word *Ped.* is written below the bass staff in measures 68 and 70, and asterisks (*) are placed below the bass staff in measures 69 and 71.

Piano score for measures 70-73. The piece is in 3/4 time. Measure 70 features a *ff* dynamic and a *8va* marking. The bass line has a series of eighth notes with accents. Measure 71 has a whole rest in both hands. Measure 72 has a whole rest in the right hand and a half note in the left. Measure 73 has a whole rest in both hands.

Piano score for measures 74-76. Measure 74 has a *Ped.* marking and a series of eighth notes with accents in the right hand. Measure 75 has a *** marking and continues the eighth-note pattern. Measure 76 has a *2/4* time signature change and a whole rest in both hands.

Piano score for measures 77-81. Measure 77 has a *Ped.* marking and a series of eighth notes with accents in the right hand. Measure 78 has a *** marking and continues the eighth-note pattern. Measure 79 has a *4/4* time signature change and a whole rest in both hands. Measure 80 has a *4/4* time signature change and a whole rest in both hands. Measure 81 has a *4/4* time signature change and a whole rest in both hands.

Piano score for measures 82-86. Measure 82 has a *4/4* time signature change and a whole rest in both hands. Measure 83 has a *4/4* time signature change and a whole rest in both hands. Measure 84 has a *4/4* time signature change and a whole rest in both hands. Measure 85 has a *4/4* time signature change and a whole rest in both hands. Measure 86 has a *4/4* time signature change and a whole rest in both hands.

Pno.

88

8va

Pno.

93

cantabile

lascia vibrare

Fine

ped.