



Stanislav Petrik

Slovakia, Bratislava

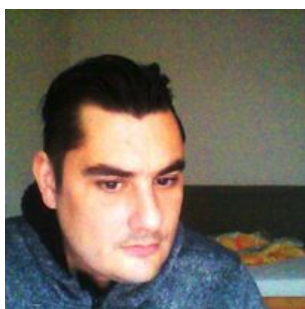
Zablesky

About the artist

Slovakian composer Stanislav Petrik 1980 was born and raised in Bratislava, where he began accordion lessons at ten. He continued his studies at the Music Conservatory in Bratislava. Later he also studied percussion instruments and piano. In 2007 he began serious composition studies with Peter Machajdik. Since then he has composed a number of chamber, orchestral and vocal works. Stanislav Petrik is a post-minimalist whose works draw on European and American musical traditions. His music is repetitive and similar to the minimalists. But unlike the minimalists, he uses longer melodic patterns and more complex European harmonies.

Artist page : <https://www.free-scores.com/Download-PDF-Sheet-Music-stanislavpetrik.htm>

About the piece



Title: Zablesky
Composer: Petrik, Stanislav
Arranger: Petrik, Stanislav
Copyright: Copyright © SOZA
Publisher: Petrik, Stanislav
Instrumentation: Piano solo
Style: Modern classical

Stanislav Petrik on [free-scores.com](https://www.free-scores.com)



This work is not Public Domain. You must contact the artist for any use outside the private area.

Prohibited distribution on other website.



- listen to the audio
- share your interpretation
- comment
- contact the artist

Zablesky

Allegro (M.M. ♩ = c. 120)

Stanislav Petrik

Piano

f

Pno.

Ped.

Pno.

Ped.

Pno.

Ped.

©2013 by:Stanislav Petrik

13

Pno.

*
p
p

17

Pno.

p
p

20

Pno.

*
p
p

23

Pno.

p
p

Pno.

28

3

Pno.

34

3

Pno.

41

fff

* *Leg.*

Pno.

48

mp

* *Leg.*

Pno.

52

53

54

p

f

Ped.

v

Pno.

55

56

57

f

Ped.

v

Pno.

58

59

60

61

62

63

p

Ped.

v

Pno.

64

65

66

67

p

Ped.

v

Pno.

70

Pno.

76

Pno.

83

Pno.

87

Ped.

*

Pno.

104

Pno.

106

meno mosso

Pno.

107

* *a tempo*

Pno.

108

110

Pno.

* Ped.

113

Pno.

* Ped.

116

Pno.

* Ped. *

119

Pno.

* Ped. *

Pno.

123

4/4 2/4 6/16 4/4 5/16

Ped.

Pno.

128

5/16 4/4 3/4

*

Pno.

131

3/4 4/4

Ped.

Pno.

133

Ped.

Pno.

135

Pno.

137

*

Pno.

139

Leg.

Pno.

141

*

Leg.

144

Pno.

146

Pno.

148

Pno.

And.

150

Pno.

And.

152

Pno.

Pno.

Measures 154-156. The right hand features a complex rhythmic pattern with triplets and accents. The left hand plays a steady eighth-note accompaniment.

Pno.

Measures 157-159. The right hand continues with complex rhythmic patterns and accents. The left hand continues with eighth-note accompaniment.

Pno.

Measures 160-162. The right hand features complex rhythmic patterns and accents. The left hand continues with eighth-note accompaniment.

Pno.

Measures 163-165. The right hand features complex rhythmic patterns and accents. The left hand continues with eighth-note accompaniment.

166

Pno.

Measures 166-169. Measure 166 is in 5/16 time. Measures 167-169 are in 3/4 time. The piece concludes with a *Ped.* (pedal) marking.

170

Pno.

Measures 170-172. Measure 170 is in 3/4 time. Measures 171-172 are in 7/8 time. The piece concludes with a *Ped.* (pedal) marking.

173

Pno.

Measures 173-174. Measure 173 is in 7/8 time. Measure 174 is in 4/4 time. A *ped.* (pedal) marking is present in measure 174. A *** (ornament) marking is present in measure 173.

175

Pno.

Measures 175-178. All measures are in 4/4 time. The right hand features a complex rhythmic pattern of triplets and sixteenth notes. The left hand plays a steady eighth-note accompaniment.

Pno.

178

fff

Pno.

181

5/4

Pno.

183

Pno.

185

*

Pno.

187

Red.

189

Pno.

192

Pno.

mp

194

Pno.

fff

197

Pno.

201

Pno.

ff



16

Pno.

207

Pno.

213

Pno.

220

Pno.

224

227

Pno.

* Led.

230

Pno.

* Led.

233

Pno.

* Led. *

236

Pno.

* Led.

Pno.

241

242

Pno.

meno mosso

242

243

Pno.

243

244

Pno.

244

245

245 *a tempo*

Pno.

247 *And.*

Pno.

250

Pno.

253

Pno.

* *And.* *

Pno.

256

Ped. *

Pno.

260

Ped. *

8va

Pno.

265

Ped.

lascia vibrare *Fine*