



# Bernard Dewagtere

France, SIN LE NOBLE

## Peter and the Wolf – 4. The Cat (Op. 67) Prokofiev, Sergei

### About the artist

Doctor in musicology, conductor and composer.

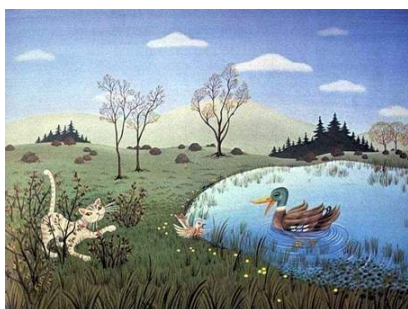
Compositions and arrangements from all eras, in all styles or musical genres and for any instrument or vocal training.

**Qualification:** PhD Musicology

**Associate:** SACEM - IPI code of the artist : 342990

**Artist page :** <https://www.free-scores.com/Download-PDF-Sheet-Music-bernard-dewagtere.htm>

### About the piece



**Title:** Peter and the Wolf – 4. The Cat [Op. 67]  
**Composer:** Prokofiev, Sergei  
**Arranger:** Dewagtere, Bernard  
**Copyright:** Copyright © Bernard Dewagtere  
**Publisher:** Dewagtere, Bernard  
**Instrumentation:** Violin and Piano (Organ)  
**Style:** Early 20th century

### Bernard Dewagtere on [free-scores.com](https://www.free-scores.com)

#### LICENSE

This sheet music requires an authorization  
- for public performances  
- for use by teachers

**Buy this license at :**

<https://www.free-scores.com//license?p=aIAZyRMLk>



- listen to the audio
- share your interpretation
- comment
- pay the licence
- contact the artist

Prohibited distribution on other website.

# Peter and the Wolf (Op. 67)

## 4. The Cat

Sergei Prokofiev (1936)

Transc. : B. Dewagtere

Moderato

*con eleganza*

Violon

Piano

*pp* *p* *f* *p*

*secco* *f*

*p* *con eleganza*

Detailed description: This block contains the first four measures of the score. The Violon part is mostly rests, with a final measure containing a quarter note G4 and a quarter note F4. The Piano part features a complex texture. The right hand starts with a *pp* chord of G4, B4, and D5, followed by a series of chords and a final *p* chord. The left hand begins with a *secco* eighth-note pattern on G4, B4, and D5, then moves to a *f* chord in the next measure, followed by a melodic line and a final *p* chord.

Vln.

Detailed description: This block contains measures 5 through 8. The Violin part has a melodic line starting on G4, moving through A4, B4, and C5, with various ornaments and slurs. The Piano accompaniment consists of a steady eighth-note pattern in the right hand and a simple bass line in the left hand.

Vln.

*espress.* *f*

Detailed description: This block contains measures 9 through 12. The Violin part continues its melodic line with *espress.* markings and slurs. The Piano part features a more active right hand with slurs and accents, and a bass line that includes a *f* chord in the final measure.

Peter and the Wolf (Op. 67)

Vln. <sup>2</sup>/<sub>13</sub>

*p* *pp* *mp*

*p* *pp* *mp*

Vln. <sup>17</sup>

*mf*

*mf*

Vln. <sup>21</sup>

*8va f*

*f*

Peter and the Wolf (Op. 67)

Vln. 25

*p* *f* *sfz*

Vln. 29

*mf* *mp*

Vln. 33

*p*

Vln. 37

*p* *sfz*