



Bernard Dewagtere

France, SIN LE NOBLE

O Little Town of Bethlehem Redner, Lewis H.

About the artist

Doctor in musicology, conductor and composer.

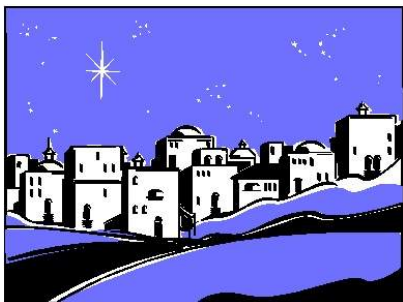
Compositions and arrangements from all eras, in all styles or musical genres and for any instrument or vocal training.

Qualification: PhD Musicology

Associate: SACEM - IPI code of the artist : 342990

Artist page : <https://www.free-scores.com/Download-PDF-Sheet-Music-bernard-dewagtere.htm>

About the piece



Title: O Little Town of Bethlehem

Composer: Redner, Lewis H.

Arranger: Dewagtere, Bernard

Copyright: Copyright © Bernard Dewagtere

Publisher: Dewagtere, Bernard

Instrumentation: Choral SATB, Organ

Style: Christmas - Carols

Bernard Dewagtere on [free-scores.com](https://www.free-scores.com)

LICENSE

This sheet music requires an authorization
- for public performances
- for use by teachers

Buy this license at :

<https://www.free-scores.com//license?p=aEoDAub6EP>



- listen to the audio
- share your interpretation
- comment
- pay the licence
- contact the artist

Prohibited distribution on other website.

O Little Town of Bethlehem

Lewis H. Redner (1831-1908)

Arr. : Bernard Dewagtere

Moderatly

Musical score for Soprano, Alto, Tenor, Bass, and Organ. The score is in 4/4 time and B-flat major. The tempo is Moderatly. The lyrics are: *p* O lit - tle town of

Musical score for Soprano, Alto, Tenor, Bass, and Organ. The score is in 4/4 time and B-flat major. The tempo is Moderatly. The lyrics are: Beth - le - hem, How still we— see thee lie; A - bove thy deep and dream - less sleep, The

©2017Dewagtere

O Little Town of Bethlehem

2
11

S
A
T
B

Org.

si - lent — strars go by. *mp* Yet in thy dark streets shin - eth The e - ver - last - ing

si - lent — strars go by. *mp* Yet in thy dark streets shin - eth The e - ver - last - ing

si - lent — strars go by. *mp* Yet in thy dark streets shin - eth The e - ver - last - ing

si - lent — strars go by. *mp* Yet in thy dark streets shin - eth The e - ver - last - ing

11

16

S
A
T
B

Org.

Light; The hopes and fears of all the years Are met in thee to - night.

Light; The hopes and fears of all the years Are met in thee to - night. - -

Light; The hopes and fears of all the years Are met in thee to - night.

Light; The hopes and fears of all the years Are met in thee to - night.

16

p

O Little Town of Bethlehem

21

S

mf For Christ is born of Ma— ry, And

A

T

B

Org.

27

S

ga - ther'd — all a - bove, While mor - tals sleep, the an - gels keep Their watch of — wond'-ring

A

T

B

Org.

O Little Town of Bethlehem

4
32

S
love. O morn-ing stars to - ge - ther Pro - claim the ho - ly birth, And prai-ses sing to

A
pp *bocca chiusa*

T
8
pp *bocca chiusa*

B
pp *bocca chiusa*

Org.

38

S
God the King And peace to men on earth.

A

T

B

Org.

44

S *mf* O ho - ly Child of Beth - le - hem, De - scend to us, we pray; Cast

A *mf* O - - ho - -ly Child of - Beth - le - hem, De - scend to us, we pray; - Cast

T *mf* O ho - ly Child of Beth - le - hem, De - scend to us, we pray; Cast

B *mf* O ho - ly Child of Beth - le - hem, De - scend to us, we pray; Cast

Org.

49

S out our sin and en - ter in; Be born to us to - day. *mp* We hear the Crist-mas an - gels, The

A - out our sin and en - ter in; Be - born-to us to - day. *mp* We hear the Crist-mas an - gels, The

T out our sin and en - ter in; Be born to us to - day. *mp* We hear the Crist-mas an - gels, The

B out our sin and en - ter in; Be born to us to - day. We hear the Crist-mas an - gels, The

Org.

O Little Town of Bethlehem

6
55

S
great glad ti-dings tell; *cresc.* O come to us, a - bide with us, Our Lord Em-ma - nu - el, O

A
- great glad ti-dings - tell; *cresc.* O come to us, a -- bide-with us, Our - Lord Em-ma-nu -- el, - O

T
great glad ti-dings tell; *cresc.* O come to us, a - bide with us, Our Lord Em-ma-nu - el, O

B
great glad ti-dings tell; *cresc.* O come to us, a - bide with us, Our Lord Em-ma-nu - el, O

Org.

61

S
come to us, a - bide with us, Our *f* Lord Em - ma - nu - el.

A
- come - to us, a - - bidewith us, Our *f* Lord Em - ma - nu - el.

T
come to us, a - bide with us, Our *f* Lord Em - ma - nu - el.

B
come to us, a - bide with us, Our *f* Lord Em - ma - nu - el.

Org.