



Bernard Dewagtere

France, SIN LE NOBLE

O Little Town of Bethlehem Redner, Lewis H.

About the artist

Doctor in musicology, conductor and composer.

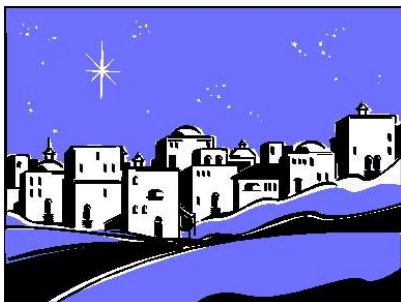
Compositions and arrangements from all eras, in all styles or musical genres and for any instrument or vocal training.

Qualification: PhD Musicology

Associate: SACEM - IPI code of the artist : 342990

Artist page : <https://www.free-scores.com/Download-PDF-Sheet-Music-bernard-dewagtere.htm>

About the piece



Title: O Little Town of Bethlehem
Composer: Redner, Lewis H.
Arranger: Dewagtere, Bernard
Copyright: Copyright © Bernard Dewagtere
Publisher: Dewagtere, Bernard
Instrumentation: Choral SAT, Piano
Style: Christmas - Carols

Bernard Dewagtere on [free-scores.com](https://www.free-scores.com)

LICENSE

This sheet music requires an authorization
- for public performances
- for use by teachers

Buy this license at :

<https://www.free-scores.com//license?p=adOcWWomAv>



- listen to the audio
- share your interpretation
- comment
- pay the licence
- contact the artist

Prohibited distribution on other website.

O Little Town of Bethlehem

Lewis H. Redner (1831-1908)

Arr. : Bernard Dewagtere

Moderatly

Soprano *p* O lit - tle town of

Alto *p* O lit - tle town of

Ténor *p* O lit - tle town of

Piano *p*

S Beth - le - hem, How still we see thee lie; A - bove thy deep and dream - less sleep, The

A Beth - le - hem, How still we see thee lie; A - bove thy deep and dream - less sleep, The

T Beth - le - hem, How still we see thee lie; A - bove thy deep and dream - less sleep, The

Pno

©2017Dewagtere

O Little Town of Bethlehem

2
11

S
si - lent — strars go by. *mp* Yet in thy dark streets shin - eth The e - ver - last - ing

A
si - lent — strars go by. *mp* Yet in thy dark streets shin - eth The e - ver - last - ing

T
si - lent — strars go by. *mp* Yet in thy dark streets shin - eth The e - ver - last - ing

Pno
11
mp

16

S
Light; The hopes and fears of all the years Are met in thee to - night.

A
Light; The hopes and fears of all the years Are met in thee to - night. - -

T
Light; The hopes and fears of all the years Are met in thee to - night.

Pno
16
p

O Little Town of Bethlehem

21

S

mf For Christ is born of Ma— ry, And

A

T

8

Pno

21

mp

27

S

ga - ther'd all a - bove, While mor - tals sleep, the an - gels keep Their watch of wond'-ring

A

T

8

Pno

27

O Little Town of Bethlehem

4
32

S
love. O morn-ing stars to - ge - ther Pro - claim the ho - ly birth, And prai-ses sing to

A
pp bocca chiusa

T
8
pp bocca chiusa

Pno
32
mp

38

S
God the King And peace to men on earth.

A

T
8

Pno
38
p

O Little Town of Bethlehem

44

S *mf* O ho - ly Child of Beth - le - hem, De - scend to__ us, we pray; Cast

A *mf* O - - ho --ly Child of - Beth - le - hem, De - scend to__ -us, we pray; - Cast

T *mf* O ho - ly Child of Beth - le - hem, De - scend to__ us, we pray; Cast

8

Pno *mf*

49

S out our sin and en - ter in; Be born to__ us to - day. *mp* We hear the Crist-mas an - gels, The

A - out our sin and en - ter in; Be - born-to__ us to - day. *mp* We hear the Crist-mas an - gels, The

T out our sin and en - ter in; Be born to__ us to - day. *mp* We hear the Crist-mas an - gels, The

8

Pno *mp*

O Little Town of Bethlehem

6
55

S
great glad ti-dings tell; *cresc.* O come to us, a - bide with us, Our Lord Em-ma - nu - el, O

A
- great glad ti-dings - tell; *cresc.* O come to us, a -- bide-with us, Our - Lord Em-ma-nu -- el, - O

T
great glad ti-dings tell; *cresc.* O come to us, a - bide with us, Our Lord Em-ma-nu - el, O

8

Pno
55
cresc.

61

S
come to us, a - bide with us, Our *f* Lord Em - ma - nu - el.

A
- come - to us, a - - bidewith us, Our - *f* Lord Em - ma - nu - el.

T
come to us, a - bide with us, Our *f* Lord Em - ma - nu - el.

8

Pno
61
f