



Bernard Dewagtere

France, SIN LE NOBLE

O Little Town of Bethlehem Redner, Lewis H.

About the artist

Doctor in musicology, conductor and composer.

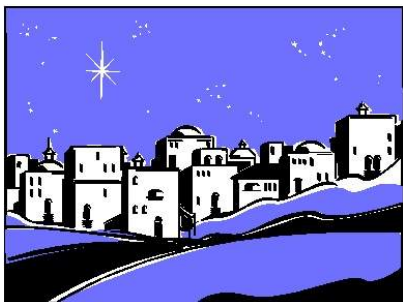
Compositions and arrangements from all eras, in all styles or musical genres and for any instrument or vocal training.

Qualification: PhD Musicology

Associate: SACEM - IPI code of the artist : 342990

Artist page : <https://www.free-scores.com/Download-PDF-Sheet-Music-bernard-dewagtere.htm>

About the piece



Title: O Little Town of Bethlehem

Composer: Redner, Lewis H.

Arranger: Dewagtere, Bernard

Copyright: Copyright © Bernard Dewagtere

Publisher: Dewagtere, Bernard

Instrumentation: Choral SAB, Piano

Style: Christmas - Carols

Bernard Dewagtere on [free-scores.com](https://www.free-scores.com)

LICENSE

This sheet music requires an authorization
- for public performances
- for use by teachers

Buy this license at :

<https://www.free-scores.com//license?p=a0yKyNQsq1>



- listen to the audio
- share your interpretation
- comment
- pay the licence
- contact the artist

Prohibited distribution on other website.

O Little Town of Bethlehem

Lewis H. Redner (1831-1908)

Arr. : Bernard Dewagtere

Moderatly

Soprano *p* O lit - tle town of

Alto *p* O lit - tle town of

Basse *p* O lit - tle town of

Piano *p*

Moderatly

S Beth - le - hem, How still we see thee lie; A - bove thy deep and dream - less sleep, The

A Beth - le - hem, How still we see thee lie; A - bove thy deep and dream - less sleep, The

B Beth - le - hem, How still we see thee lie; A - bove thy deep and dream - less sleep, The

Pno

O Little Town of Bethlehem

2
11

S
A
B

si - lent — strars go by. *mp* Yet in thy dark streets shin - eth The e - ver - last - ing

si - lent — strars go by. *mp* Yet in thy dark streets shin - eth The e - ver - last - ing

si - lent — strars go by. *mp* Yet in thy dark streets shin - eth The e - ver - last - ing

Pno

11

mp

16

S
A
B

Light; The hopes and fears of all the years Are met in thee to - night.

Light; The hopes and fears of all the years Are met in thee to - night. - -

Light; The hopes and fears of all the years Are met in thee to - night.

Pno

16

p

O Little Town of Bethlehem

21

S

mf For Christ is born of Ma— ry, And

A

B

Pno

mp

27

S

ga - ther'd all a - bove, While mor - tals sleep, the an - gels keep Their watch of wond'-ring

A

B

Pno

O Little Town of Bethlehem

4
32

S
love. O morn-ing stars to - ge - ther Pro - claim the ho - ly birth, And prai-ses sing to

A
pp bocca chiusa

B
pp bocca chiusa

Pno
mp

32

S
God the King And peace to men on earth.

A

B

Pno
p

38

The image shows a musical score for the hymn 'O Little Town of Bethlehem'. It is arranged for Soprano (S), Alto (A), Bass (B), and Piano (Pno). The score is divided into two systems. The first system covers measures 32 to 37. The Soprano part has lyrics: 'love. O morn-ing stars to - ge - ther Pro - claim the ho - ly birth, And prai-ses sing to'. The Alto and Bass parts are marked 'pp bocca chiusa'. The Piano accompaniment is marked 'mp'. The second system covers measures 38 to 43. The Soprano part has lyrics: 'God the King And peace to men on earth.'. The Alto and Bass parts are silent. The Piano accompaniment is marked 'p'. The key signature is one sharp (F#) and the time signature is 4/4.

O Little Town of Bethlehem

44

S *mf* O ho - ly Child of Beth - le - hem, De - scend to__ us, we pray; Cast

A *mf* O - - ho --ly Child of - Beth - le - hem, De - scend to__ -us, we pray; - Cast

B *mf* O ho - ly Child of Beth - le - hem, De - scend to us, we pray; Cast

Pno *mf*

49

S out our sin and en - ter in; Be born to__ us to - day. *mp* We hear the Crist-mas an - gels, The

A - out our sin and en - ter in; Be - born - to__ us to - day. *mp* We hear the Crist-mas an - gels, The

B out our sin and en - ter in; Be born to us to - day. We hear the Crist-mas an - gels, The

Pno *mp*

O Little Town of Bethlehem

6
55

S
great glad ti-dings tell; *cresc.* O come to us, a - bide with us, Our Lord Em-ma - nu - el, O

A
- great glad ti-dings - tell; *cresc.* O come to us, a -- bide-with us, Our - Lord Em-ma-nu -- el, - O

B
great glad ti-dings tell; *cresc.* O come to us, a - bide with us, Our Lord Em-ma-nu - el, O

Pno

61

S
come to us, a - bide with us, Our *f* Lord Em - ma - nu - el.

A
- come - to us, a - - bidewith us, Our *f* Lord Em - ma - nu - el.

B
come to us, a - bide with us, Our *f* Lord Em - ma - nu - el.

Pno