



# Bernard Dewagtere

France, SIN LE NOBLE

## O Little Town of Bethlehem Redner, Lewis H.

### About the artist

Doctor in musicology, conductor and composer.

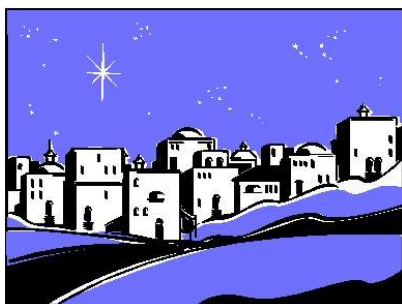
Compositions and arrangements from all eras, in all styles or musical genres and for any instrument or vocal training.

**Qualification:** PhD Musicology

**Associate:** SACEM - IPI code of the artist : 342990

**Artist page :** <https://www.free-scores.com/Download-PDF-Sheet-Music-bernard-dewagtere.htm>

### About the piece



**Title:** O Little Town of Bethlehem

**Composer:** Redner, Lewis H.

**Arranger:** Dewagtere, Bernard

**Copyright:** Copyright © Bernard Dewagtere

**Publisher:** Dewagtere, Bernard

**Instrumentation:** Clarinet and Organ

**Style:** Christmas - Carols

### Bernard Dewagtere on [free-scores.com](https://www.free-scores.com)

#### LICENSE

This sheet music requires an authorization  
- for public performances  
- for use by teachers

**Buy this license at :**

<https://www.free-scores.com//license?p=apTI5Q6oeH>



- listen to the audio
- share your interpretation
- comment
- pay the licence
- contact the artist

Prohibited distribution on other website.

# O Little Town of Bethlehem

Lewis H. Redner (1831-1908)

Arr. : Bernard Dewagtere

Moderatly

Clarinette Basse en Sib

Organ

*mf*

This system contains the first five measures of the piece. The Clarinet Basso part (top staff) is mostly silent, with a few notes in the fifth measure. The Organ part (bottom two staves) provides a harmonic accompaniment with chords and moving lines in both hands.

Cl. B.

Org.

This system contains measures 6 through 11. The Clarinet Basso part (top staff) has a melodic line with a fermata on the eighth measure. The Organ part (bottom two staves) continues the accompaniment.

Cl. B.

Org.

This system contains measures 12 through 17. The Clarinet Basso part (top staff) has a melodic line with a fermata on the fifteenth measure. The Organ part (bottom two staves) continues the accompaniment.

Cl. B.

Org.

This system contains measures 18 through 23. The Clarinet Basso part (top staff) has a melodic line that ends with a fermata on the twenty-first measure. The Organ part (bottom two staves) continues the accompaniment.

O Little Town of Bethlehem

2  
24

Cl. B.

Org.

30

Cl. B.

Org.

36

Cl. B.

Org.

42

Cl. B.

Org.

O Little Town of Bethlehem

46

Cl. B.

Org.

51

Cl. B.

Org.

56

Cl. B.

Org.

61

Cl. B.

Org.