



# Bernard Dewagtere

France, SIN LE NOBLE

## O Little Town of Bethlehem Redner, Lewis H.

### About the artist

Doctor in musicology, conductor and composer.

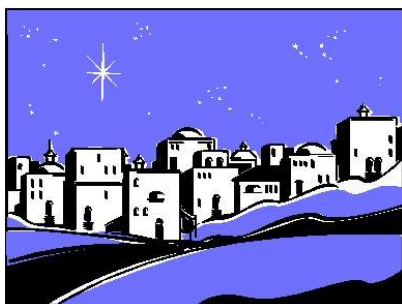
Compositions and arrangements from all eras, in all styles or musical genres and for any instrument or vocal training.

**Qualification:** PhD Musicology

**Associate:** SACEM - IPI code of the artist : 342990

**Artist page :** <https://www.free-scores.com/Download-PDF-Sheet-Music-bernard-dewagtere.htm>

### About the piece



**Title:** O Little Town of Bethlehem

**Composer:** Redner, Lewis H.

**Arranger:** Dewagtere, Bernard

**Copyright:** Copyright © Bernard Dewagtere

**Publisher:** Dewagtere, Bernard

**Instrumentation:** Soprano or tenor saxophone, piano or organ

**Style:** Christmas - Carols

### Bernard Dewagtere on [free-scores.com](https://www.free-scores.com)

#### LICENSE

This sheet music requires an authorization  
- for public performances  
- for use by teachers

**Buy this license at :**

<https://www.free-scores.com//license?p=aXWRVkyopO>



- listen to the audio
- share your interpretation
- comment
- pay the licence
- contact the artist

Prohibited distribution on other website.

# O Little Town of Bethlehem

Lewis H. Redner (1831-1908)

Arr. : Bernard Dewagtere

Moderatly

Saxophone Ténor

Organ

*mf*

Sax. Tén.

Org.

Sax. Tén.

Org.

Sax. Tén.

Org.

# O Little Town of Bethlehem

2  
24

Sax. Tén.

Org.

This system contains measures 24 through 29. The Saxophone Tenor part begins with a whole rest in measure 24, followed by a melodic line starting on a G4. The Organ part provides accompaniment with chords and moving lines in both the right and left hands.

30

Sax. Tén.

Org.

This system contains measures 30 through 35. The Saxophone Tenor part continues the melodic line with eighth and quarter notes. The Organ part continues with accompaniment, featuring some chordal textures.

36

Sax. Tén.

Org.

This system contains measures 36 through 41. The Saxophone Tenor part has a whole rest in measure 36, then resumes the melody. The Organ part continues with accompaniment, including some sustained chords.

42

Sax. Tén.

Org.

This system contains measures 42 through 47. The Saxophone Tenor part has whole rests in measures 42 and 43, then resumes the melody. The Organ part continues with accompaniment, including a prominent sustained chord in measure 45.

O Little Town of Bethlehem

Sax. Tén.

Org.

Sax. Tén.

Org.

Sax. Tén.

Org.

Sax. Tén.

Org.