



# Bernard Dewagtere

France, SIN LE NOBLE

## O Little Town of Bethlehem Redner, Lewis H.

### About the artist

Doctor in musicology, conductor and composer.

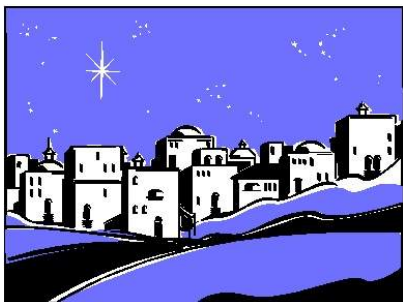
Compositions and arrangements from all eras, in all styles or musical genres and for any instrument or vocal training.

**Qualification:** PhD Musicology

**Associate:** SACEM - IPI code of the artist : 342990

**Artist page :** <https://www.free-scores.com/Download-PDF-Sheet-Music-bernard-dewagtere.htm>

### About the piece



**Title:** O Little Town of Bethlehem

**Composer:** Redner, Lewis H.

**Arranger:** Dewagtere, Bernard

**Copyright:** Copyright © Bernard Dewagtere

**Publisher:** Dewagtere, Bernard

**Instrumentation:** Alto Saxophone or Clarinet (Eb), piano and/or Organ or Guitar

**Style:** Christmas - Carols

### Bernard Dewagtere on [free-scores.com](https://www.free-scores.com)

#### LICENSE

This sheet music requires an authorization  
- for public performances  
- for use by teachers

**Buy this license at :**

<https://www.free-scores.com//license?p=a4E1vx1VvM>



- listen to the audio
- share your interpretation
- comment
- pay the licence
- contact the artist

Prohibited distribution on other website.

# O Little Town of Bethlehem

Lewis H. Redner (1831-1908)

Arr. : Bernard Dewagtere

Moderately

Saxophone Alto

mf

Organ

Detailed description: This system contains the first five measures of the piece. The Saxophone Alto part is in treble clef with a key signature of one sharp (F#) and a 4/4 time signature. It starts with a whole rest for the first four measures and then plays a half note G4, a quarter note A4, a quarter note B4, and a half note C5 in the fifth measure. The Organ part is in grand staff (treble and bass clefs) with a key signature of one flat (Bb) and a 4/4 time signature. It provides a harmonic accompaniment with chords and moving lines in both hands.

Sax. Alt.

Organ.

Detailed description: This system contains measures 6 through 11. The Saxophone Alto part continues with a melodic line: G4 (quarter), A4 (quarter), B4 (quarter), C5 (quarter), B4 (quarter), A4 (quarter), G4 (quarter), F#4 (quarter), E4 (quarter), D4 (quarter), C4 (half). The Organ part continues with its accompaniment.

Sax. Alt.

Organ.

Detailed description: This system contains measures 12 through 17. The Saxophone Alto part continues with: D4 (quarter), E4 (quarter), F#4 (quarter), G4 (quarter), A4 (quarter), B4 (quarter), C5 (quarter), B4 (quarter), A4 (quarter), G4 (quarter), F#4 (quarter), E4 (quarter), D4 (quarter), C4 (half). The Organ part continues with its accompaniment.

Sax. Alt.

Organ.

Detailed description: This system contains measures 18 through 23. The Saxophone Alto part continues with: D4 (quarter), E4 (quarter), F#4 (quarter), G4 (quarter), A4 (quarter), B4 (quarter), C5 (quarter), B4 (quarter), A4 (quarter), G4 (quarter), F#4 (quarter), E4 (quarter), D4 (quarter), C4 (half). The Organ part continues with its accompaniment.

O Little Town of Bethlehem

2  
24

Sax. Alt.

Org.

30

Sax. Alt.

Org.

36

Sax. Alt.

Org.

42

Sax. Alt.

Org.

O Little Town of Bethlehem

Sax. Alt.

Org.

46

Detailed description: This system contains measures 46 to 50. The Saxophone Alto part (top staff) begins with a treble clef and a key signature of two flats. It features a melodic line with eighth and quarter notes, including a dotted quarter note with a fermata over the final measure. The Organ part (bottom two staves) uses a grand staff with a key signature of two flats. The right hand plays chords and moving lines, while the left hand provides a steady accompaniment with chords and single notes.

Sax. Alt.

Org.

51

Detailed description: This system contains measures 51 to 55. The Saxophone Alto part continues the melodic line with eighth notes and quarter notes. The Organ part maintains its accompaniment, with the right hand playing chords and the left hand playing a consistent bass line.

Sax. Alt.

Org.

56

Detailed description: This system contains measures 56 to 60. The Saxophone Alto part features a melodic line with a dotted quarter note and a fermata over the final measure. The Organ part continues with its accompaniment, including a prominent chordal structure in the right hand.

Sax. Alt.

Org.

61

Detailed description: This system contains measures 61 to 65. The Saxophone Alto part concludes with a melodic line that ends with a fermata. The Organ part provides a final accompaniment, with the right hand playing chords and the left hand playing a steady bass line.