



Reginaldo Budai

Arranger, Composer

Brazil, São Paulo

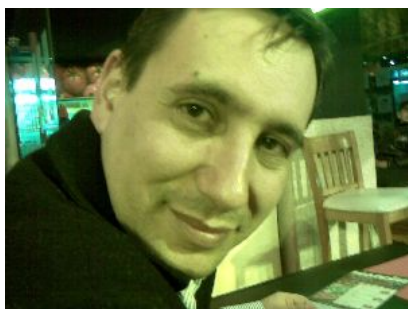
About the artist

Reginaldo Budai, was born in São Paulo in 1967, Brazil, composer and arranger.

Qualification: undergraduate student in music
the Mozarteum University of São Paulo - Famosp

Personal web: <http://www.free-scores.com>

About the piece



Title: Millenium
Composer: Budai, Reginaldo
Licence: Budai Reginaldo Budai © All rights reserve
Publisher: Budai, Reginaldo
Instrumentation: String Quintet : 2 Violins, Viola, Cello and Bass
Style: Contemporary

Reginaldo Budai on [free-scores.com](http://www.free-scores.com)

<http://www.free-scores.com/Download-PDF-Sheet-Music-budai.htm>

- Contact the artist
- Write feedback comments
- Share your MP3 recording
- Web page access with QR Code :



This work is not Public Domain. You must contact the artist for any use outside the private area.

Millenium

Mus :Reginaldo Budai

A

$\text{♩} = 60$

Violin I
Violin II&III
Viola
Violoncello
Contrabass

6

Vln I
Vln II&III
Vla
Vc.
Cb.

B

11

Vln I
Vln II&III
Vla
Vc.
Cb.

16

Vln I
Vln II&III
Vla
Vc.
Cb.

Millenium

21

Vln I
Vln II&III
Vla
Vc.
Cb.

Detailed description: This system contains measures 21 through 25. The Vln I part features a melodic line with eighth and sixteenth notes. Vln II&III plays a rhythmic accompaniment of eighth notes. The Vla part has a steady eighth-note accompaniment. The Vc. part provides a harmonic foundation with long notes. The Cb. part has a rhythmic pattern of eighth notes with rests.

26

Vln I
Vln II&III
Vla
Vc.
Cb.

Detailed description: This system contains measures 26 through 30. The Vln I part continues its melodic line. Vln II&III plays eighth notes. The Vla part continues its eighth-note accompaniment. The Vc. part continues with long notes. The Cb. part continues its rhythmic pattern.

31

C
♩ = 90

Vln I
Vln II&III
Vla
Vc.
Cb.

arco

Detailed description: This system contains measures 31 through 35. A common time signature change is indicated by a 'C' in a box above the first measure, with a tempo marking of a quarter note equal to 90. A double bar line with repeat dots precedes measure 31. In measure 31, the Vln I, Vln II&III, and Vla parts have rests, while the Vc. and Cb. parts play. From measure 32 onwards, all parts play. The Vc. part is marked 'arco' and features a dense sixteenth-note accompaniment. The Vln I part has a melodic line with accents. Vln II&III and Vla play chords with accents. The Cb. part has a rhythmic pattern with accents.

36

Vln I
Vln II&III
Vla
Vc.
Cb.

Detailed description: This system contains measures 36 through 40. The Vln I part has a melodic line with accents. Vln II&III plays chords with accents. The Vla part plays chords with accents. The Vc. part continues its sixteenth-note accompaniment with accents. The Cb. part has a rhythmic pattern with accents.

Millenium

41

Vln I
Vln II&III
Vla
Vc.
Cb.

Detailed description: This system contains measures 41 through 45. It features five staves: Violin I (treble clef), Violin II & III (treble clef), Viola (alto clef), Violoncello (bass clef), and Contrabass (bass clef). The music is in a key with one sharp (F#) and a 4/4 time signature. Measures 41-45 show a complex texture with various rhythmic patterns and articulation marks like accents and slurs.

46

Vln I
Vln II&III
Vla
Vc.
Cb.

Detailed description: This system contains measures 46 through 50. The instrumentation remains the same. Measure 46 starts with a key signature change to two sharps (F# and C#). The music continues with intricate rhythmic and melodic lines across all staves.

51

D = 150

Vln I
Vln II&III
Vla
Vc.
Cb.

Detailed description: This system contains measures 51 through 56. A dynamic marking of **D** (Dolce) is present above measure 51, with a tempo marking of = 150. The key signature is two sharps. The music features a mix of sustained notes and rhythmic patterns.

57

Vln I
Vln II&III
Vla
Vc.
Cb.

Detailed description: This system contains measures 57 through 61. The instrumentation is consistent. The music concludes with sustained notes and a final cadence across the staves.

Millenium

4

63 **E** ♩ = 150

Vln I
Vln II&III
Vla
Vc.
Cb.

Detailed description: This system covers measures 63 to 69. It begins with a key signature change to E major (one sharp) and a tempo marking of quarter note = 150. The Vln I part features a melodic line with eighth and sixteenth notes. Vln II&III provides harmonic support with a similar rhythmic pattern. The Viola part has a more active role with eighth notes. The Violoncello and Contrabass parts play a steady eighth-note accompaniment with accents.

70

Vln I
Vln II&III
Vla
Vc.
Cb.

Detailed description: This system covers measures 70 to 76. The Vln I part continues its melodic line with some slurs. Vln II&III and the Viola part have more complex rhythmic patterns, including some sixteenth-note runs. The Vc. and Cb. parts continue their accompaniment, with some slurs and accents.

77 **F** ♩ = 90

Vln I
Vln II&III
Vla
Vc.
Cb.

arco

Detailed description: This system covers measures 77 to 81. It starts with a key signature change to F major (no sharps or flats) and a tempo marking of quarter note = 90. The Vln I and Vln II&III parts are mostly silent, indicated by a large dash. The Viola part has a melodic line. The Vc. part plays a dense, rhythmic accompaniment of sixteenth notes, marked 'arco'. The Cb. part has a melodic line with some rests.

82

Vln I
Vln II&III
Vla
Vc.
Cb.

Detailed description: This system covers measures 82 to 87. The Vln I part has a melodic line. Vln II&III and the Viola part have harmonic support. The Vc. part continues its sixteenth-note accompaniment. The Cb. part has a melodic line with some rests.

87

Vln I
Vln II&III
Vla
Vc.
Cb.

Detailed description: This system contains measures 87 to 91. It features five staves: Violin I, Violin II & III, Viola, Violoncello, and Contrabass. The key signature has one sharp (F#). The music is in 4/4 time. Measures 87-91 show a complex texture with various rhythmic patterns and dynamics. The Violoncello and Contrabass parts have many accents and slurs. The Viola part has a steady eighth-note accompaniment.

92

Vln I
Vln II&III
Vla
Vc.
Cb.

Detailed description: This system contains measures 92 to 96. The key signature changes to two sharps (F# and C#). The music continues with similar textures to the previous system, featuring intricate violin and cello/bass lines. Dynamics like *mf* and *f* are used throughout.

97

90

Vln I
Vln II&III
Vla
Vc.
Cb.

G
pizz.
pizz.
pizz.

Detailed description: This system contains measures 97 to 103. At measure 97, there is a key signature change to two sharps (F# and C#) and a time signature change to 3/4. A large 'G' chord symbol is placed above the first staff. The Violin I, Violin II & III, Viola, and Contrabass parts are marked with *pizz.* (pizzicato). The Violoncello part has a melodic line with slurs. The system ends with a double bar line.

104

Vln I
Vln II&III
Vla
Vc.
Cb.

Detailed description: This system contains measures 104 to 108. The key signature remains two sharps (F# and C#) and the time signature is 3/4. The music resumes with the Violoncello and Contrabass parts playing a melodic line with slurs, while the Violin and Viola parts have rests. The system ends with a double bar line.

Millenium

6

111

Vln I
Vln II&III
Vla
Vc.
Cb.

118

Vln I
Vln II&III
Vla
Vc.
Cb.

122

Vln I
Vln II&III
Vla
Vc.
Cb.

126

Tema:
arco.

Vln I
Vln II&III
Vla
Vc.
Cb.

Millenium

131

Vln I
Vln II&III
Vla
Vc.
Cb.

138

mf

Vln I
Vln II&III
Vla
Vc.
Cb.

$\text{♩} = 160$

145

H

Vln I
Vln II&III
Vla
Vc.
Cb.

153

Vln I
Vln II&III
Vla
Vc.
Cb.

Millenium

158

Vln I
Vln II&III
Vla
Vc.
Cb.

mf

mf

mf

This system covers measures 158 to 162. It features five staves: Vln I, Vln II&III, Vla, Vc., and Cb. The Vln I staff has a melodic line with a key signature of one sharp (F#) and a dynamic of *mf*. The Vln II&III and Vla staves provide harmonic support with chords and moving lines, also marked *mf*. The Vc. and Cb. staves play a rhythmic pattern of eighth notes with accents.

163

Vln I
Vln II&III
Vla
Vc.
Cb.

This system covers measures 163 to 168. The Vln I staff continues its melodic line. The Vln II&III and Vla staves maintain their harmonic accompaniment. The Vc. and Cb. staves continue with the eighth-note rhythmic pattern.

169

Vln I
Vln II&III
Vla
Vc.
Cb.

mp
mf

mp
mf

mp
mf

This system covers measures 169 to 174. The Vln I staff has a rest for the first two measures, then enters with a melodic line. The Vln II&III and Vla staves have a rest for the first two measures, then enter with chords. The Vc. and Cb. staves continue with the eighth-note rhythmic pattern. Dynamics include *mp* and *mf*.

175

Vln I
Vln II&III
Vla
Vc.
Cb.

mp
mf

mp
mf

mp
mf

This system covers measures 175 to 180. The Vln I staff has a melodic line with a dynamic of *mp*. The Vln II&III and Vla staves have chords with a dynamic of *mf*. The Vc. and Cb. staves continue with the eighth-note rhythmic pattern.

180

Vln I
Vln II&III
Vla
Vc.
Cb.

Detailed description: This system covers measures 180 to 184. Vln I has a few notes at the start. Vln II&III has a whole note chord. Vla and Vc. play a rhythmic eighth-note pattern. Cb. plays a similar pattern. Dynamic markings include *p* and *v*.

185

Vln I
Vln II&III
Vla
Vc.
Cb.

Detailed description: This system covers measures 185 to 189. Vln I and Vln II&III are mostly silent. Vla and Vc. continue the eighth-note pattern. Cb. has a more active line. Dynamic markings include *v*.

190

Vln I
Vln II&III
Vla
Vc.
Cb.

I

Detailed description: This system covers measures 190 to 195. A first ending bracket labeled 'I' spans measures 192-195. Vln I and Vln II&III play chords. Vla and Vc. play eighth notes. Cb. has a steady bass line. Dynamic markings include *mf*.

196

Vln I
Vln II&III
Vla
Vc.
Cb.

Detailed description: This system covers measures 196 to 200. Vln I and Vln II&III play melodic lines. Vla and Vc. play eighth notes. Cb. has a steady bass line. Dynamic markings include *v*.

Millenium

202

Vln I
Vln II&III
Vla
Vc.
Cb.

Detailed description: This system contains measures 202 through 207. It features five staves: Violin I, Violin II & III, Viola, Violoncello, and Contrabass. The Violin I part has a melodic line with some grace notes. The Violoncello and Contrabass parts have a rhythmic accompaniment with eighth notes and some accents.

208

Vln I
Vln II&III
Vla
Vc.
Cb.

Detailed description: This system contains measures 208 through 214. The Violin I part continues with a melodic line. The Violoncello and Contrabass parts maintain their rhythmic accompaniment. There are some dynamic markings like 'p' and 'f'.

215

Vln I
Vln II&III
Vla
Vc.
Cb.

J = 150

Detailed description: This system contains measures 215 through 219. A double bar line is present at the end of measure 215. A box with the letter 'J' and a tempo marking of 150 is located to the right of the staves. The Violoncello and Contrabass parts have a rhythmic accompaniment with eighth notes and some accents.

220

Vln I
Vln II&III
Vla
Vc.
Cb.

Detailed description: This system contains measures 220 through 224. The Violin I and Violin II & III parts are mostly silent. The Viola, Violoncello, and Contrabass parts have a rhythmic accompaniment with eighth notes and some accents. There are dynamic markings like 'mp' and 'p'.

225

Vln I
Vln II&III
Vla
Vc.
Cb.

231

Vln I
Vln II&III
Vla
Vc.
Cb.

236

Vln I
Vln II&III
Vla
Vc.
Cb.

241

Vln I
Vln II&III
Vla
Vc.
Cb.

Millenium

12

247

Vln I
Vln II&III
Vla
Vc.
Cb.

mp

This system contains measures 247 through 251. It features five staves: Violin I, Violin II & III, Viola, Violoncello, and Contrabass. The Violin I and II & III staves are mostly silent, with some notes in measure 248. The Viola and Violoncello staves play a rhythmic pattern of eighth notes, with dynamics marked *mp*. The Contrabass staff provides a steady bass line.

252

Vln I
Vln II&III
Vla
Vc.
Cb.

This system contains measures 252 through 256. The Violin I and II & III staves remain silent. The Viola and Violoncello staves continue with their eighth-note rhythmic pattern. The Contrabass staff continues with its bass line.

257

Vln I
Vln II&III
Vla
Vc.
Cb.

mf

K

This system contains measures 257 through 262. Measures 257-261 show the Violin I and II & III staves entering with a melodic line, marked *mf*. The Viola and Violoncello staves continue their rhythmic pattern. The Contrabass staff continues its bass line. A key signature change is indicated by a box labeled 'K' at the beginning of measure 262.

263

Vln I
Vln II&III
Vla
Vc.
Cb.

This system contains measures 263 through 267. The Violin I and II & III staves continue their melodic line. The Viola and Violoncello staves continue their rhythmic pattern. The Contrabass staff continues its bass line.

269

Vln I
Vln II&III
Vla
Vc.
Cb.

Detailed description: This system covers measures 269 to 274. It features five staves: Violin I, Violin II & III, Viola, Violoncello, and Contrabass. The Violin I part has a melodic line with slurs and accents. The Violin II & III part provides harmonic support with sustained notes. The Viola part has a melodic line with slurs. The Violoncello and Contrabass parts have rhythmic patterns with slurs and accents.

275

Vln I
Vln II&III
Vla
Vc.
Cb.

Detailed description: This system covers measures 275 to 281. It features five staves: Violin I, Violin II & III, Viola, Violoncello, and Contrabass. The Violin I part has a melodic line with slurs and accents. The Violin II & III part has a rhythmic pattern with slurs. The Viola part has a melodic line with slurs. The Violoncello and Contrabass parts have rhythmic patterns with slurs and accents.

282

Vln I
Vln II&III
Vla
Vc.
Cb.

Detailed description: This system covers measures 282 to 285. It features five staves: Violin I, Violin II & III, Viola, Violoncello, and Contrabass. The Violin I part has a melodic line with slurs and accents. The Violin II & III part has a rhythmic pattern with slurs. The Viola part has a melodic line with slurs. The Violoncello and Contrabass parts have rhythmic patterns with slurs and accents.

286

Vln I
Vln II&III
Vla
Vc.
Cb.

p ♩ = 130 ♩ = 100

Detailed description: This system covers measures 286 to 291. It features five staves: Violin I, Violin II & III, Viola, Violoncello, and Contrabass. The Violin I part has a melodic line with slurs and accents. The Violin II & III part has a rhythmic pattern with slurs. The Viola part has a melodic line with slurs. The Violoncello and Contrabass parts have rhythmic patterns with slurs and accents. Dynamics include *f*, *ff*, and *p*. Tempo markings are ♩ = 130 and ♩ = 100.