



Bernard Dewagtere

France, SIN LE NOBLE

Flight of the Bumblebee Rimsky-Korsakov, Nikolai

About the artist

Doctor in musicology, conductor and composer.

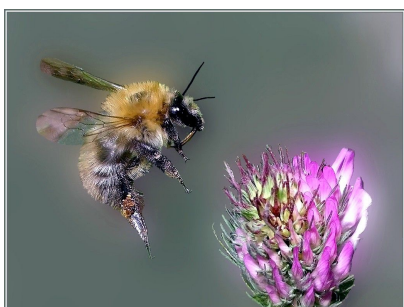
Compositions and arrangements from all eras, in all styles or musical genres and for any instrument or vocal training.

Qualification: PhD Musicology

Associate: SACEM - IPI code of the artist : 342990

Artist page : <https://www.free-scores.com/Download-PDF-Sheet-Music-bernard-dewagtere.htm>

About the piece



Title: Flight of the Bumblebee

Composer: Rimsky-Korsakov, Nikolai

Arranger: Dewagtere, Bernard

Copyright: Copyright © Dewagtere, Bernard

Instrumentation: Brass Septet

Style: Romantic

Comment: "Flight of the Bumblebee" is an orchestral interlude written by Nikolai Rimsky-Korsakov for his opera ?The Tale of Tsar Saltan?, composed in 1899?1900. The piece closes Act III, Tableau 1, during which the magic Swan-Bird changes Prince Gvidon Saltanovich (the Tsar's son) into an insect so that he can fly away to visit his father (who does not know that he is alive).

Bernard Dewagtere on [free-scores.com](https://www.free-scores.com)

LICENSE

This sheet music requires an authorization
- for public performances
- for use by teachers

Buy this license at :

<https://www.free-scores.com/licence-partition-uk.php?partition=40393>



- listen to the audio
- share your interpretation
- comment
- pay the licence
- contact the artist

Prohibited distribution on other website.

Le vol du bourdon

Flight of the Bumblebee

Nikolai Rimsky-Korsakov (1900)

Transc. : Bernard Dewagtere

Vivace

Trompette piccolo en La

Musical staff for Trompette piccolo en La, showing a melodic line starting with a forte (sf) dynamic.

Trompette en Sib

Musical staff for Trompette en Sib, showing a melodic line starting with a forte (sf) dynamic, transitioning to mezzo-forte (mf) and then diminuendo (dim.).

Cor en Fa 1

Musical staff for Cor en Fa 1, showing a melodic line starting with a forte (sf) dynamic, transitioning to mezzo-forte (mf).

Cor en Fa 2

Musical staff for Cor en Fa 2, showing a melodic line starting with a forte (sf) dynamic, transitioning to mezzo-forte (mf).

Trombone ténor

Musical staff for Trombone ténor, showing a melodic line starting with a forte (sf) dynamic, transitioning to mezzo-forte (mf).

Euphonium

Musical staff for Euphonium, showing a melodic line starting with a forte (sf) dynamic, transitioning to mezzo-forte (mf).

Tuba basse

Musical staff for Tuba basse, showing a melodic line starting with a forte (sf) dynamic, transitioning to mezzo-forte (mf).

Trp. picc.

Musical staff for Trp. picc., starting at measure 5, showing a melodic line.

Trp. (Sib)

Musical staff for Trp. (Sib), showing a melodic line starting with a mezzo-forte (mf) dynamic.

Cor 1

Musical staff for Cor 1, showing a melodic line.

Cor 2

Musical staff for Cor 2, showing a melodic line starting with a piano (p) dynamic, transitioning to mezzo-forte (mf).

Trb. T.

Musical staff for Trb. T., showing a melodic line starting with a mezzo-forte (mf) dynamic.

Euph.

Musical staff for Euph., showing a melodic line starting with a mezzo-forte (mf) dynamic.

Tub. B.

Musical staff for Tub. B., showing a melodic line starting with a mezzo-forte (mf) dynamic.

Le vol du bourdon

10

Trp. picc.

Trp. (Sib)

Cor 1

Cor 2

Trb. T.

Euph.

Tub. B.

mf

Detailed description: This block contains the musical score for measures 10 through 14. The score is for a brass ensemble. The Piccolo Trumpet (Trp. picc.) is silent. The Soprano Trumpet (Trp. (Sib)) plays a melodic line starting in measure 10 with a quarter note G4, followed by eighth notes. The First Horn (Cor 1) is silent. The Second Horn (Cor 2) plays a melodic line starting in measure 11 with a quarter note G4, followed by eighth notes. The Trombone (Trb. T.) and Euphonium (Euph.) parts play a rhythmic accompaniment of quarter notes. The Bass Trombone (Tub. B.) plays a similar rhythmic accompaniment. A dynamic marking of *mf* is present in measure 11. The key signature has one sharp (F#) and the time signature is 4/4.

15

Trp. picc.

Trp. (Sib)

Cor 1

Cor 2

Trb. T.

Euph.

Tub. B.

Detailed description: This block contains the musical score for measures 15 through 19. The Piccolo Trumpet (Trp. picc.) is silent. The Soprano Trumpet (Trp. (Sib)) plays a melodic line starting in measure 15 with a quarter note G4, followed by eighth notes. The First Horn (Cor 1) is silent. The Second Horn (Cor 2) plays a melodic line starting in measure 16 with a quarter note G4, followed by eighth notes. The Trombone (Trb. T.) and Euphonium (Euph.) parts play a rhythmic accompaniment of quarter notes. The Bass Trombone (Tub. B.) plays a similar rhythmic accompaniment. The key signature has one sharp (F#) and the time signature is 4/4.

Le vol du bourdon

19

Trp. picc.

Trp. (Sib)

Cor 1

Cor 2

Trb. T.

Euph.

Tub. B.

p

p

p

p

Detailed description: This system of musical notation covers measures 19 through 23. The Piccolo Trumpet (Trp. picc.) part is mostly silent, indicated by rests. The Soprano Saxophone (Trp. (Sib)) plays a melodic line with eighth-note patterns, starting with a dynamic marking of *p* at the end of measure 23. The First Horn (Cor 1) is silent. The Second Horn (Cor 2) plays a rhythmic accompaniment of eighth notes, also marked *p*. The Tenor Trombone (Trb. T.) plays a similar eighth-note accompaniment, marked *p*. The Euphonium (Euph.) and Bass Trombone (Tub. B.) parts are silent.

24

Trp. picc.

Trp. (Sib)

Cor 1

Cor 2

Trb. T.

Euph.

Tub. B.

mp

mp

mp

mp

Detailed description: This system of musical notation covers measures 24 through 28. The Piccolo Trumpet (Trp. picc.) is silent. The Soprano Saxophone (Trp. (Sib)) plays a melodic line with a dynamic marking of *mp* at the start of measure 24. The First Horn (Cor 1) is silent until measure 28, where it plays a melodic line marked *mp*. The Second Horn (Cor 2) is silent. The Tenor Trombone (Trb. T.) plays a rhythmic accompaniment of eighth notes, marked *mp*. The Euphonium (Euph.) plays a rhythmic accompaniment of eighth notes, marked *mp*. The Bass Trombone (Tub. B.) is silent.

Le vol du bourdon

30

Trp. picc.

Trp. (Sib)

Cor 1

Cor 2

Trb. T.

Euph.

Tub. B.

p

mp

36

Trp. picc.

Trp. (Sib)

Cor 1

Cor 2

Trb. T.

Euph.

Tub. B.

mf

mf

mf

Le vol du bourdon

40

Trp. picc.

Trp. (Sib)

Cor 1

Cor 2

Trb. T.

Euph.

Tub. B.

45

Trp. picc.

Trp. (Sib)

Cor 1

Cor 2

Trb. T.

Euph.

Tub. B.

f

f

f

mp

Le vol du bourdon

51

Trp. picc.

Trp. (Sib)

Cor 1

Cor 2

Trb. T.

Euph.

Tub. B.

mf

57

Trp. picc.

Trp. (Sib)

Cor 1

Cor 2

Trb. T.

Euph.

Tub. B.

p

cresc.

mf

mf

mf

mf

Le vol du bourdon

62

Trp. picc.
Trp. (Sib)
Cor 1
Cor 2
Trb. T.
Euph.
Tub. B.

Detailed description: This block contains the musical score for measures 62 through 66. The Piccolo Trumpet (Trp. picc.) has a melodic line with a long slur across all five measures. The other instruments (Soprano Trumpet, Cor 1, Cor 2, Tenor Trumpet, Euphonium, and Bass Trombone) play a rhythmic accompaniment of quarter notes and rests. The key signature has one flat (B-flat), and the time signature is 4/4.

67

Trp. picc.
Trp. (Sib)
Cor 1
Cor 2
Trb. T.
Euph.
Tub. B.

Detailed description: This block contains the musical score for measures 67 through 71. The Piccolo Trumpet (Trp. picc.) has a melodic line with a long slur across all five measures. The other instruments (Soprano Trumpet, Cor 1, Cor 2, Tenor Trumpet, Euphonium, and Bass Trombone) play a rhythmic accompaniment of quarter notes and rests. The key signature has one flat (B-flat), and the time signature is 4/4.

Le vol du bourdon

72

Trp. picc.

Trp. (Sib)

Cor 1

Cor 2

Trb. T.

Euph.

Tub. B.

cresc.

f

77

Trp. picc.

Trp. (Sib)

Cor 1

Cor 2

Trb. T.

Euph.

Tub. B.

ff

mf

Le vol du bourdon

82

Trp. picc.
Trp. (Sib)
Cor 1
Cor 2
Trb. T.
Euph.
Tub. B.

f
ff
ff

Detailed description: This system contains measures 82 through 86. The Piccolo Trumpet (Trp. picc.) is silent until measure 85, where it plays a melodic phrase starting on G4. The other instruments have various parts: Trp. (Sib) and Cor 1 play a rhythmic pattern of quarter notes, with Cor 1 reaching a fortissimo (*ff*) dynamic in measure 85. Cor 2 plays a continuous sixteenth-note tremolo. Trb. T., Euph., and Tub. B. play a simple rhythmic accompaniment of quarter notes.

87

Trp. picc.
Trp. (Sib)
Cor 1
Cor 2
Trb. T.
Euph.
Tub. B.

f *dim. poco a poco*
f
f
dim. poco a poco
dim. poco a poco
dim. poco a poco
dim. poco a poco

Detailed description: This system contains measures 87 through 91. The Piccolo Trumpet (Trp. picc.) plays a complex melodic line with many accidentals, starting at a fortissimo (*f*) dynamic and gradually decaying (*dim. poco a poco*) to a piano dynamic by measure 91. The other instruments have various parts: Trp. (Sib) is silent until measure 90, where it plays a melodic phrase. Cor 1 and Cor 2 play a rhythmic pattern of quarter notes, with Cor 1 starting at *f* and decaying. Trb. T., Euph., and Tub. B. play a simple rhythmic accompaniment of quarter notes, all decaying in dynamics.

92

Trp. picc.

Trp. (Sib)

Cor 1

Cor 2

Trb. T.

Euph.

Tub. B.

f

mf

mf

mp

mf

mp

mf

98

Trp. picc.

Trp. (Sib)

Cor 1

Cor 2

Trb. T.

Euph.

Tub. B.

dim.

f

mp

p

p

pp

f

mp

p

pp

f

mp

p

pp

f

mp

p

pp

p

pp