



Fabienne Roussel

Canada

Activités à imprimer (formation musicale)

About the artist

For more music, suscribe to my Youtube Channel

https://www.youtube.com/channel/UC__gr9Xqj8c5hCv9bJgomWQ

Associate: SOCAN

Artist page : <https://www.free-scores.com/Download-PDF-Sheet-Music-alouette.htm>

About the piece



Title: Activités à imprimer [formation musicale]
Composer: Roussel, Fabienne
Copyright: Copyright © Fabienne Roussel
Publisher: Roussel, Fabienne
Instrumentation: All instrument
Style: Early 20th century

Fabienne Roussel on [free-scores.com](https://www.free-scores.com)

LICENSE

This sheet music requires an authorization

- for public performances
- for use by teachers

Buy this license at :

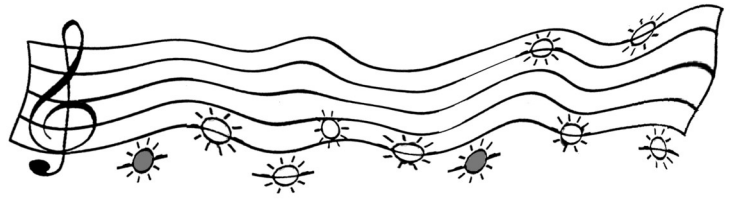
<https://www.free-scores.com/license?p=afWIJgSuSu>



- listen to the audio
- share your interpretation
- comment
- pay the licence
- contact the artist

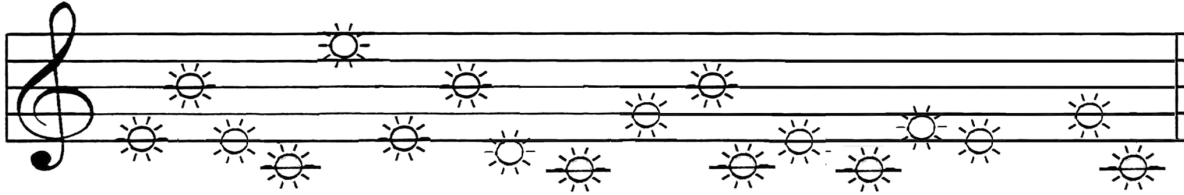
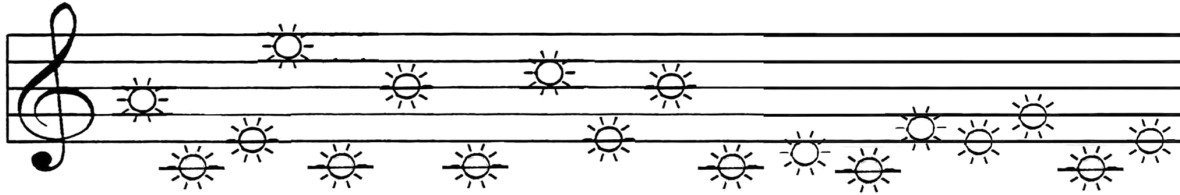
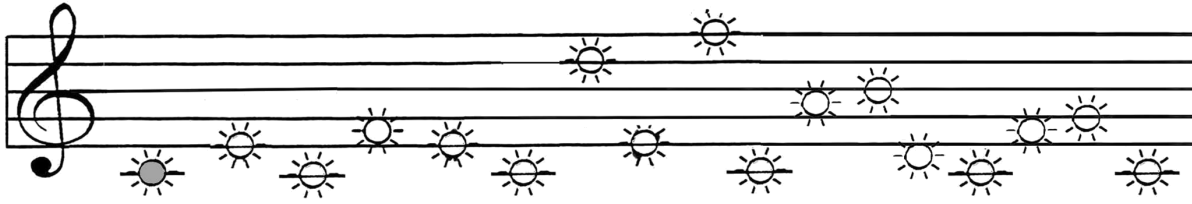
Prohibited distribution on other website.

ACTIVITÉS

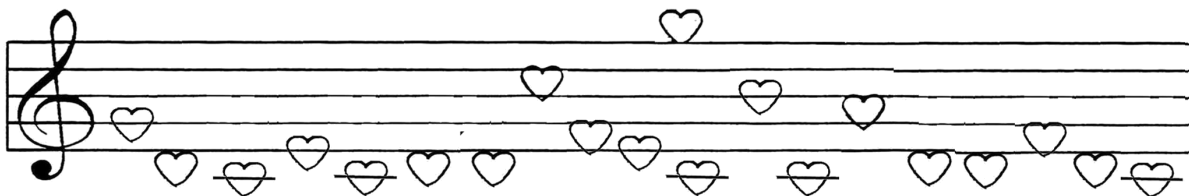
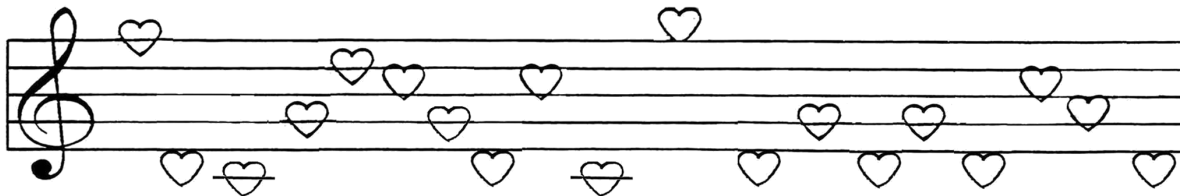
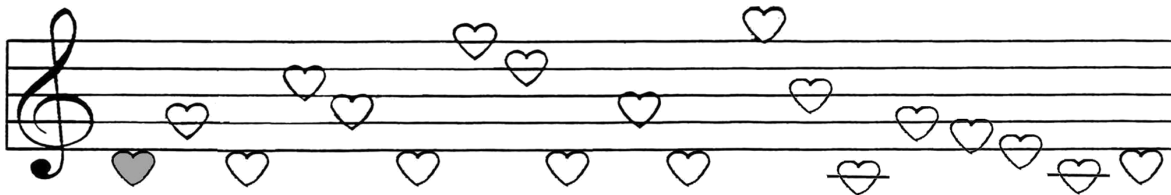




colorie tous les **DO**

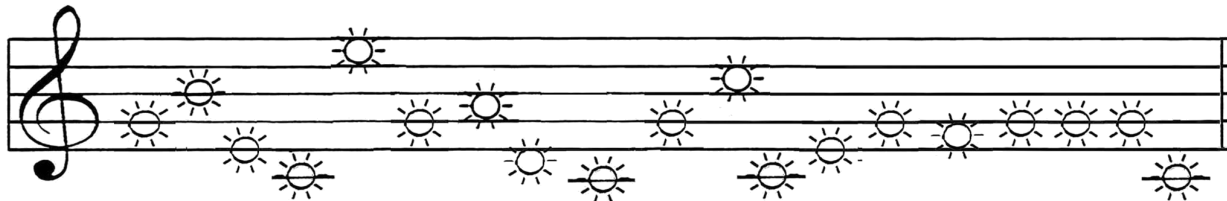
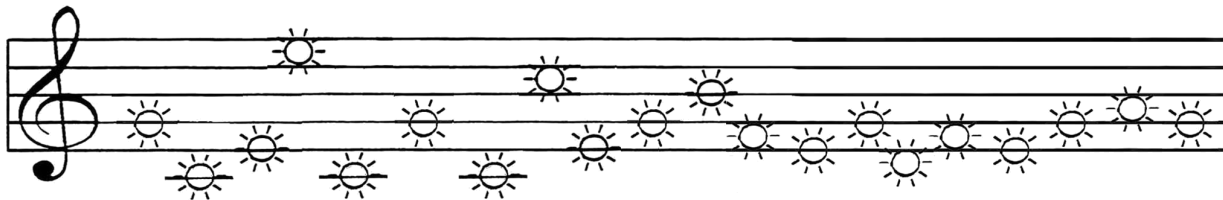
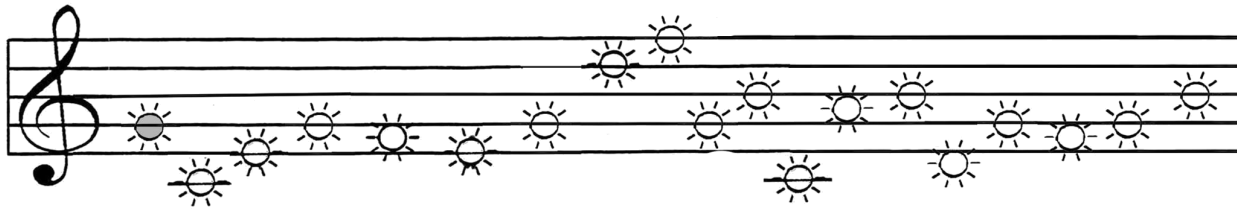


colorie tous les **Ré**



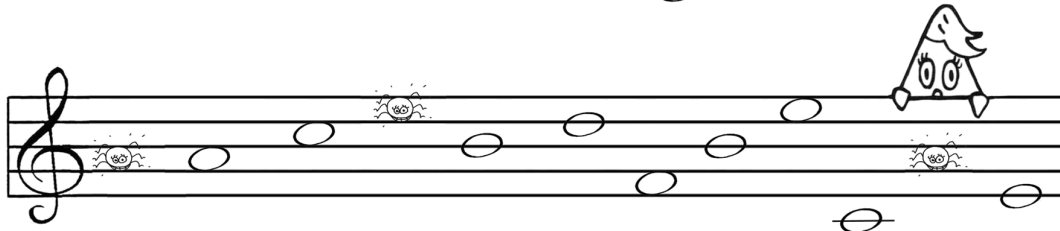
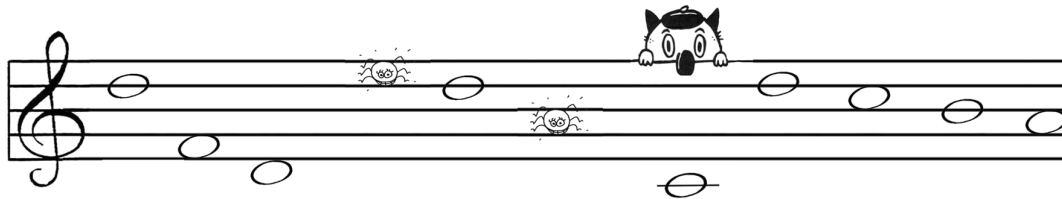
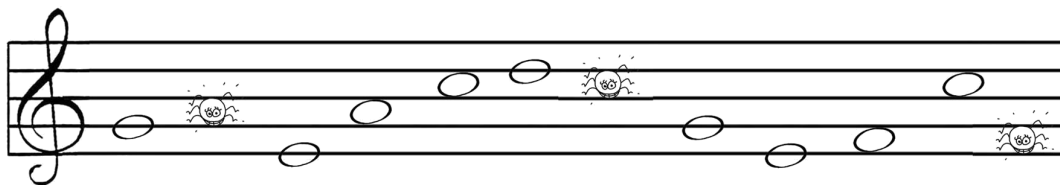


colorie tous les **Sol**



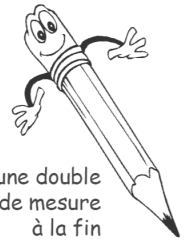
Colorie en rouge les notes sur les lignes

Colorie en bleu les notes entre les lignes

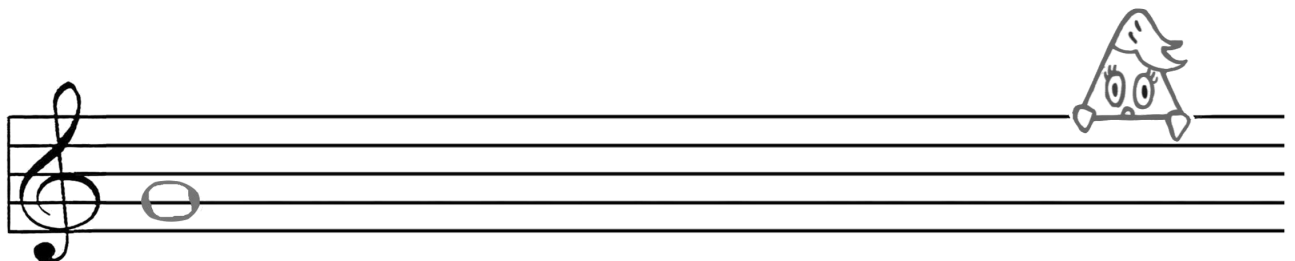
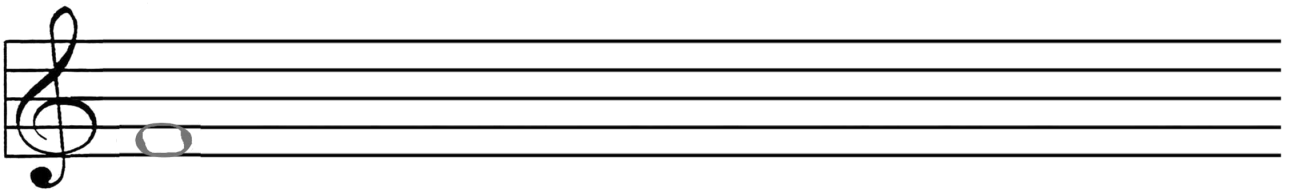
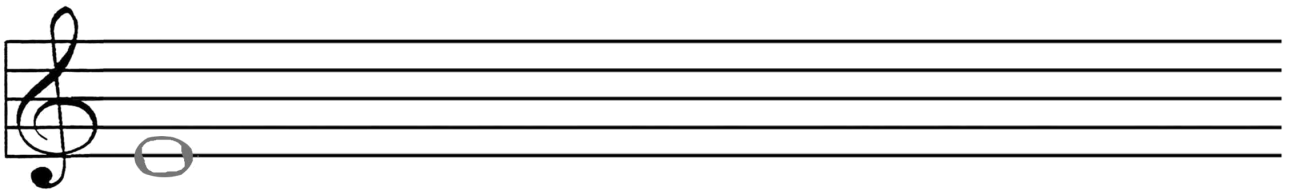
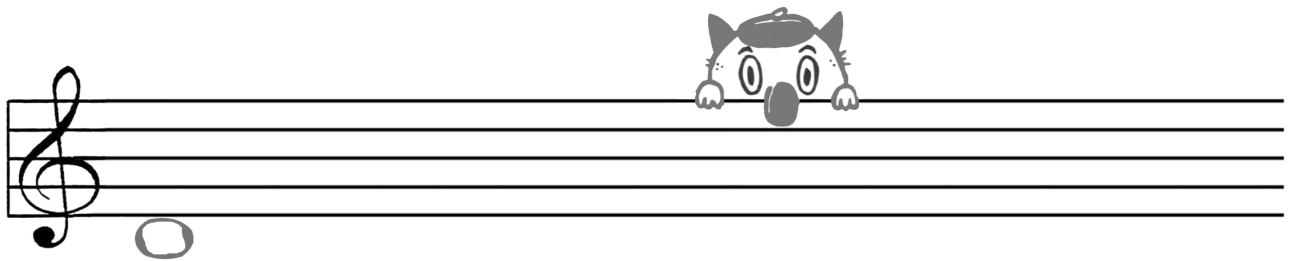
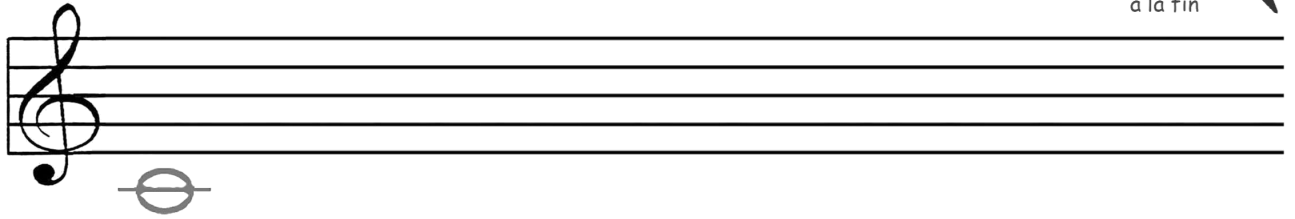


DESSINE LES NOTES DE MUSIQUE

DO - RÉ - MI - FA - SOL



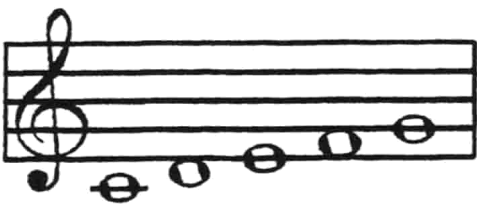
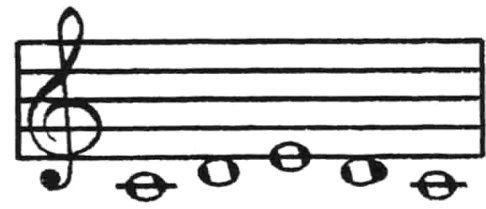
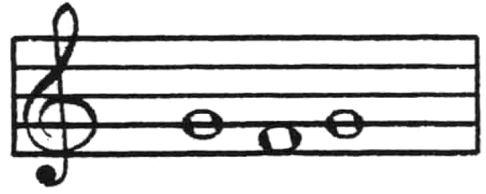
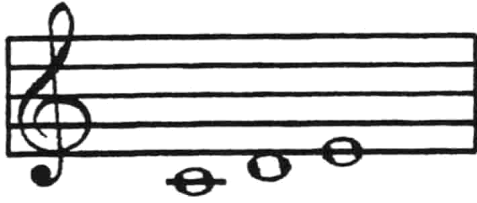
Trace une double
barre de mesure
à la fin

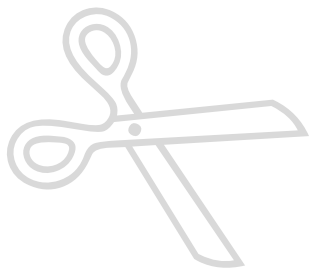


Jeu de Cartes (1)

À la page suivante tu trouveras un jeu de cartes musicales à découper.

- Mélange les cartes
- Retourne chaque carte au hasard, et lis le nom des notes
- Joue les notes sur le piano



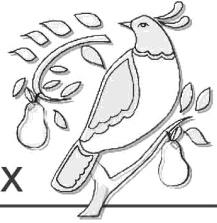


Dessine les notes manquantes

toujours sur le rythme: 

... et essaie de chanter la chanson

Chanson de la perdrix



do ré mi

la per - drix

mi fa sol

elle s'en - vole



fa mi ré

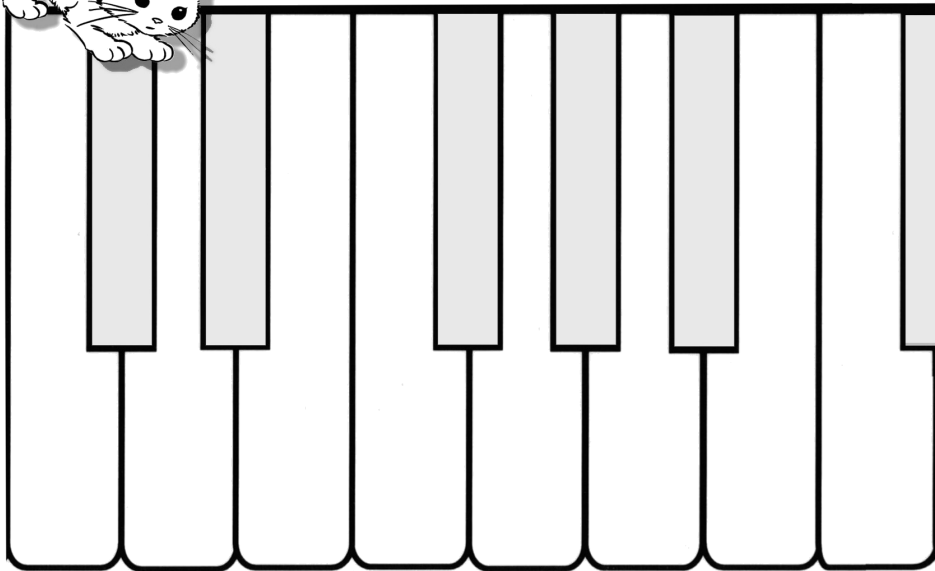
dans le pré

mi ré do

tombe dans l'eau



Relie chaque note à sa touche
et noircis les touches noires



mi

do

si

ré

la

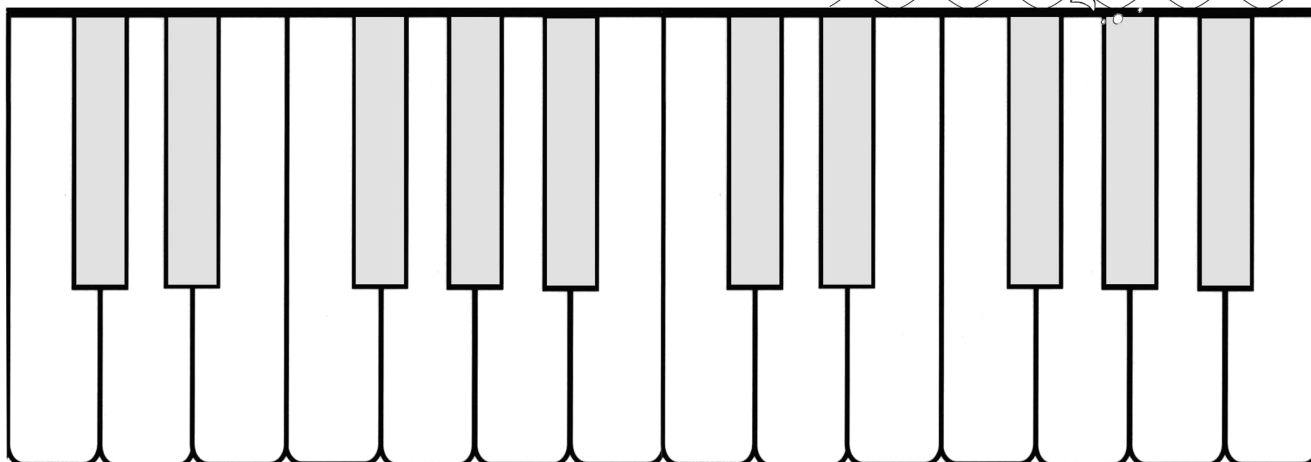
fa

sol

do

Relie chaque note à sa touche

et noircis les touches noires



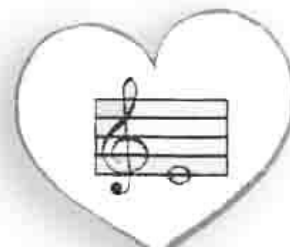
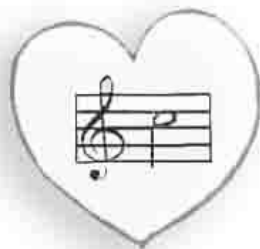
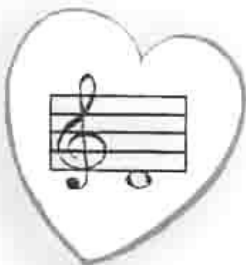
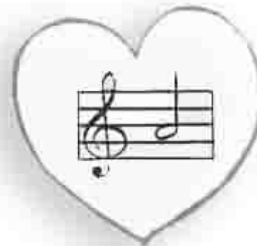
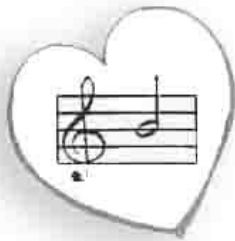
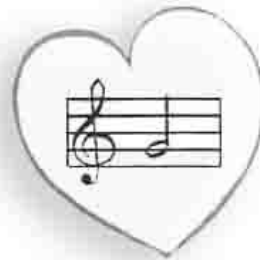
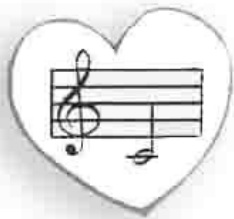
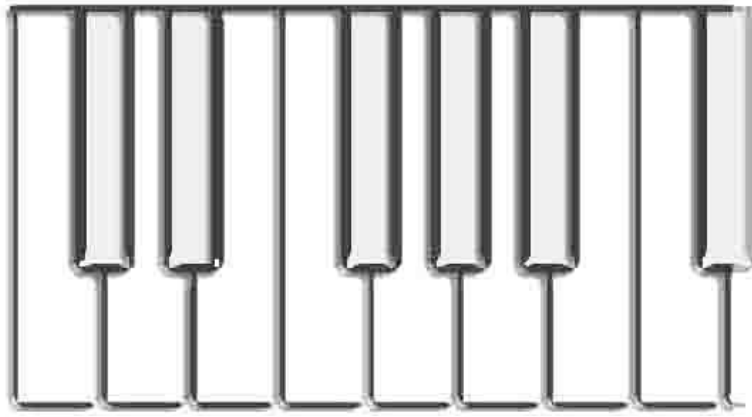
sol la sol do

fa mi do

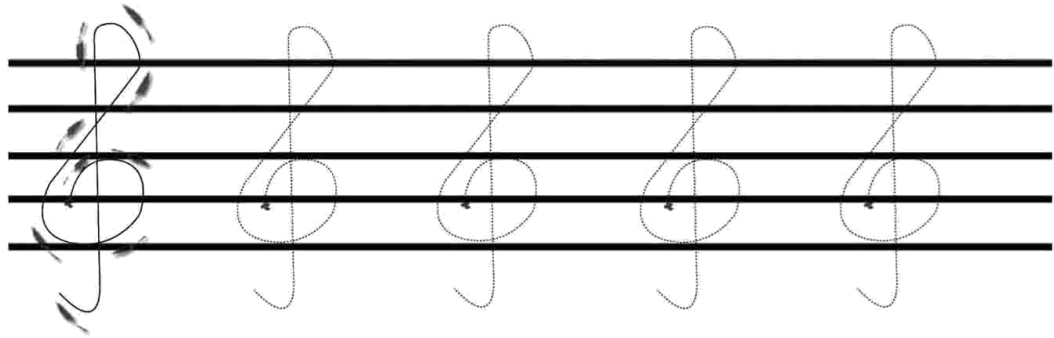
ré mi ré

fa la ré

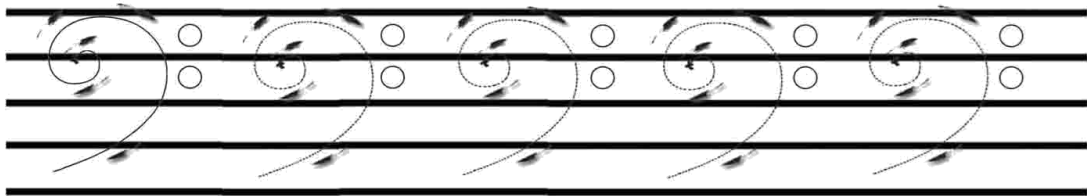
si si



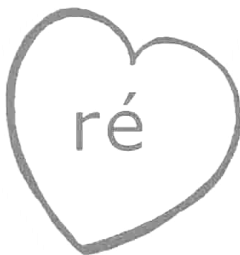
Dessine la clé de sol



Dessine la clé de fa



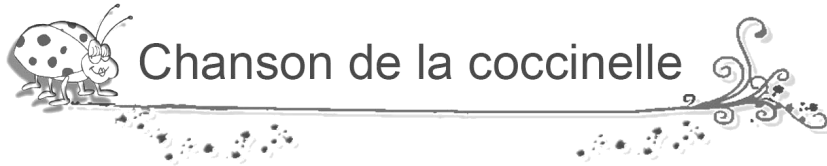
Relie les coeurs



Dessine les notes manquantes

toujours sur le rythme: 

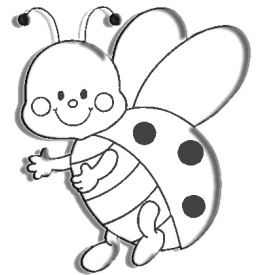
... et essaie de chanter la chanson



Chanson de la coccinelle



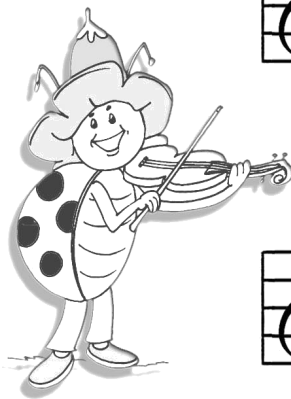
do ré mi fa Coc - ci - nel - le que voi - là,



ré mi fa sol Coc - ci - nel - le qui s'en - vole



sol fa mi ré Com - me pour nous an - non - cer



fa mi ré do Que de - main il fe - ra beau

Comment je m'appelle?



🐾 la croche

🐾 mesure à 4 temps

🐾 deux croches

🐾 la noire

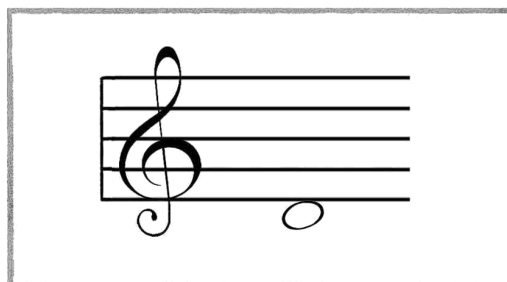
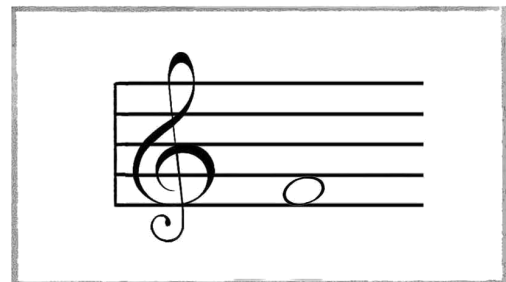
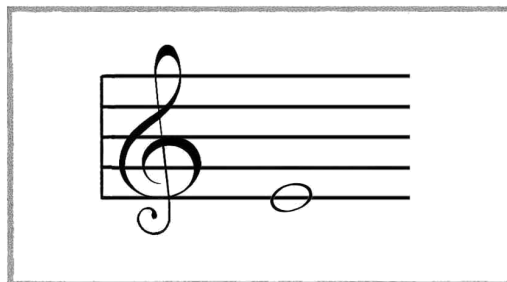
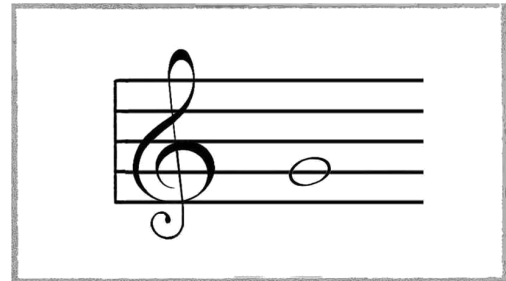
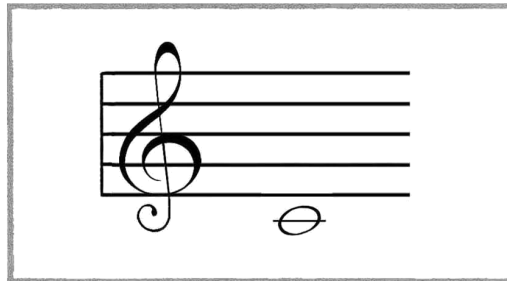
🐾 le soupir

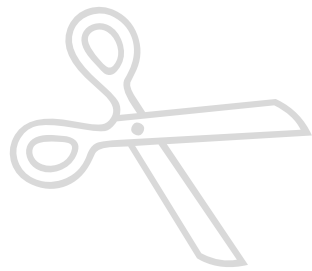
🐾 la blanche

🐾 la ronde

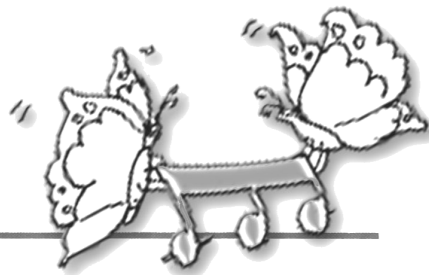
Jeu musical

- Découpe les cartes ci-dessous,
et place-les dans les bonnes cases à la page suivante
- Découvre les mots mystères : ils contiennent tous un nom de note!

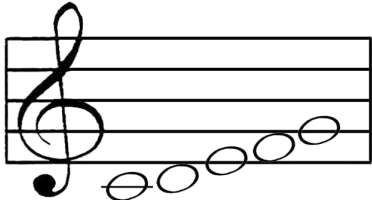
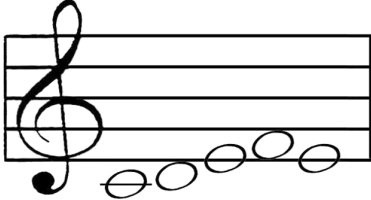
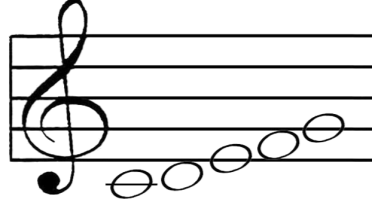




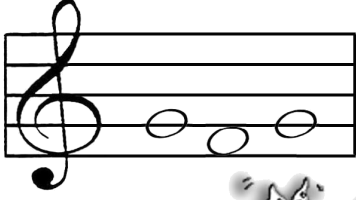
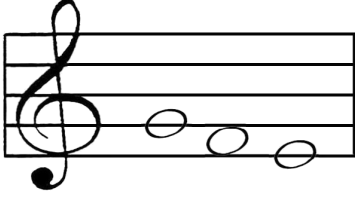
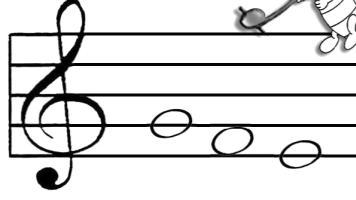
Encerle la mesure qui est différente

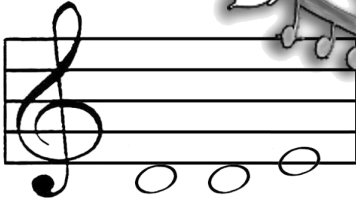
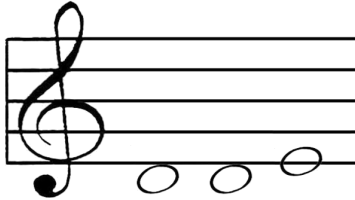
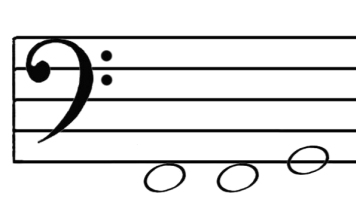


1.   

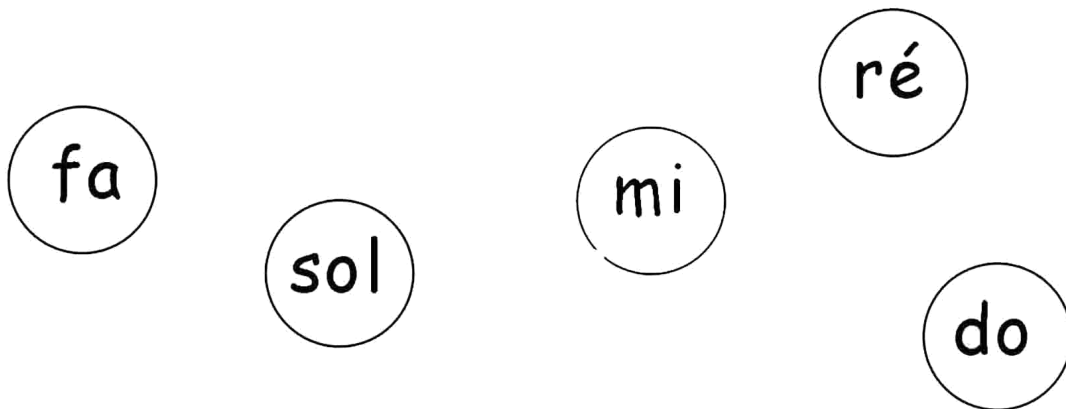
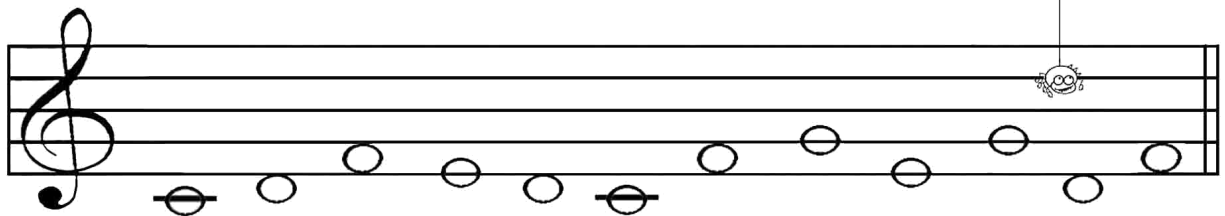
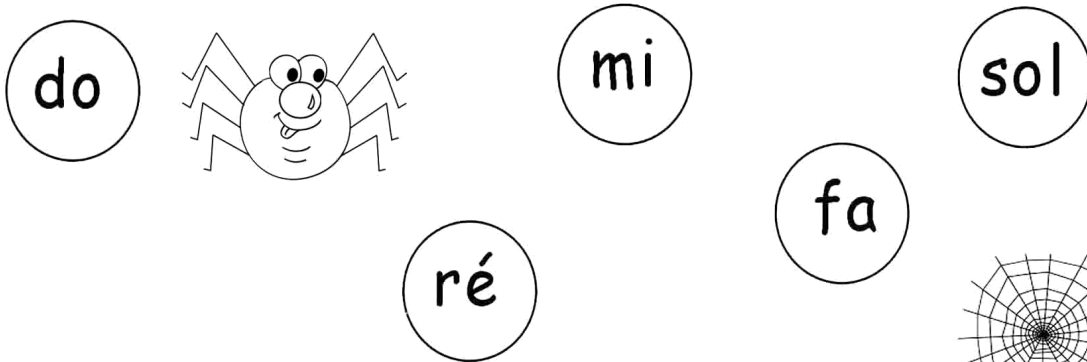
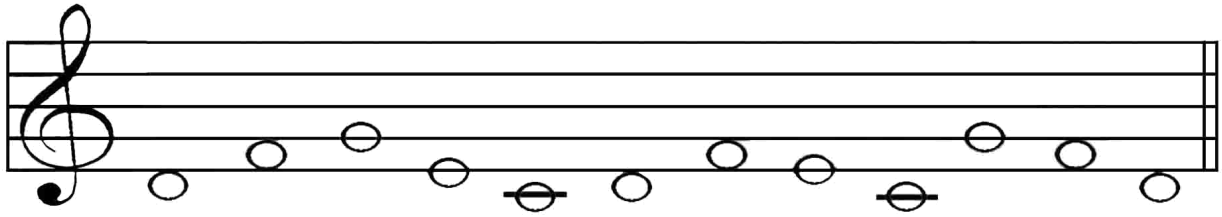
2.   

3.   

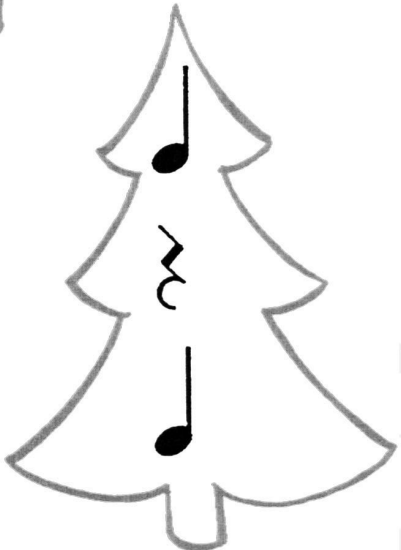
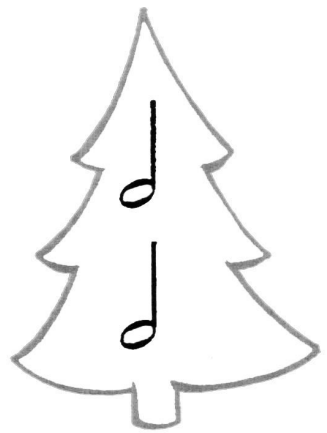
4.   

5.   

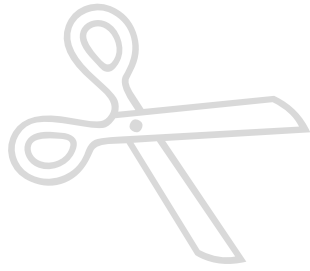
Relie les notes à leur nom



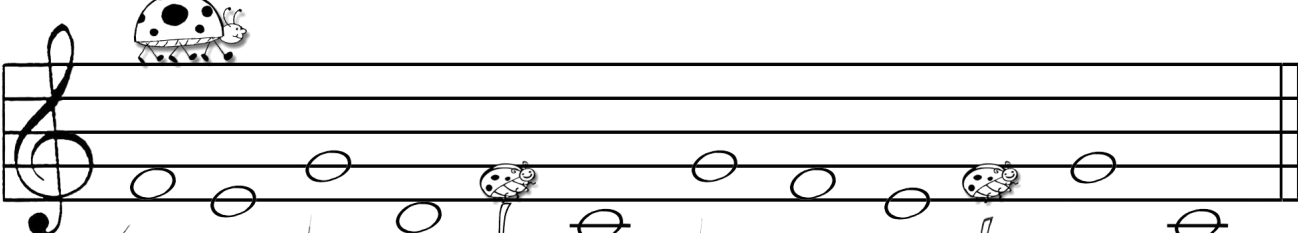
Relie par un trait l'ARBRE
dont la valeur correspond à l'ETOILE



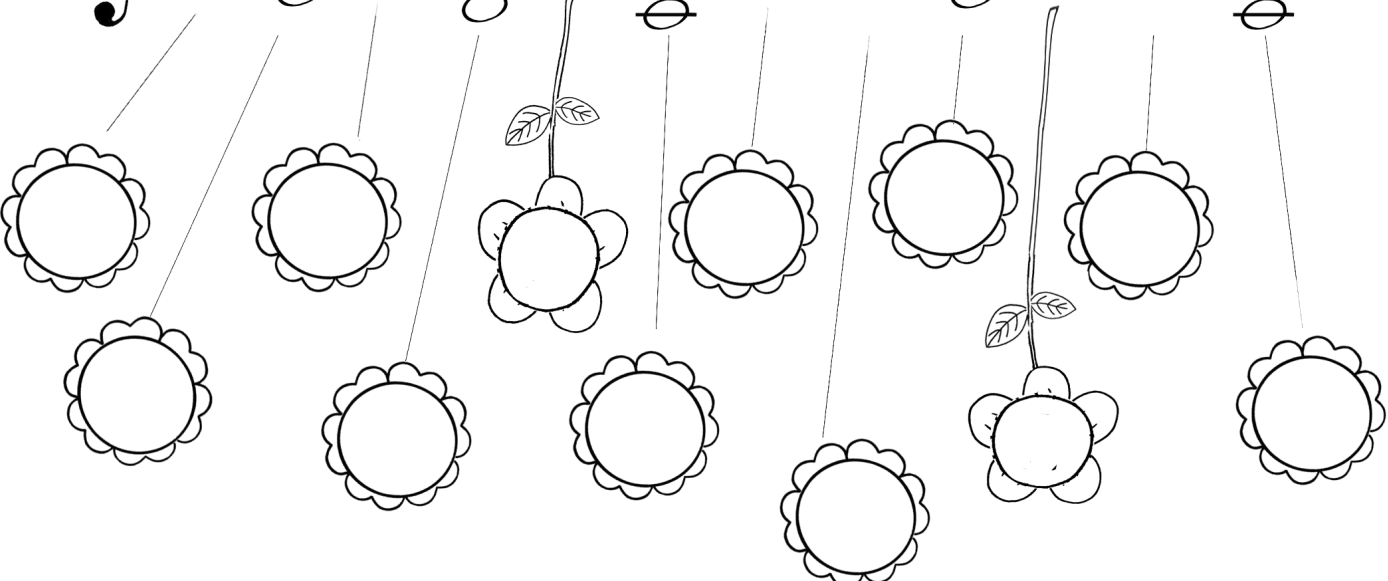




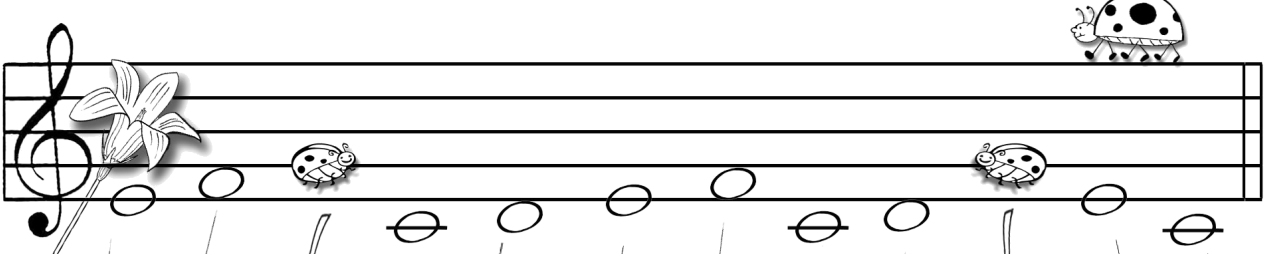
Écris le nom des notes



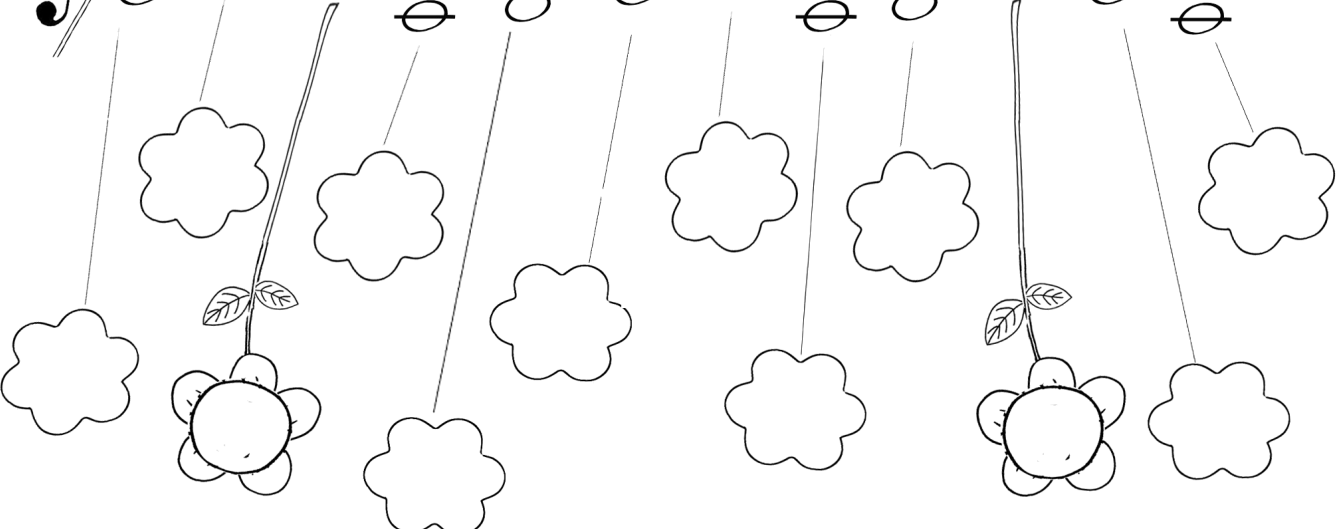
A musical staff with a treble clef. A ladybug is on the staff. There are ten notes: a quarter note on G4, a quarter note on A4, a quarter note on B4, a quarter note on C5, a quarter note on B4, a quarter note on A4, a quarter note on G4, a quarter note on F4, a quarter note on E4, and a quarter note on D4. Two ladybugs are on the staff, one on the C5 note and one on the G4 note.



There are ten flowers, each connected to a note on the staff by a vertical line. The flowers are arranged in two rows. The top row has five flowers, and the bottom row has five flowers. The flowers are simple line drawings with scalloped edges and some have stems with leaves.



A musical staff with a treble clef. A ladybug is on the staff. There are ten notes: a quarter note on G4, a quarter note on A4, a quarter note on B4, a quarter note on C5, a quarter note on B4, a quarter note on A4, a quarter note on G4, a quarter note on F4, a quarter note on E4, and a quarter note on D4. Two ladybugs are on the staff, one on the C5 note and one on the G4 note.



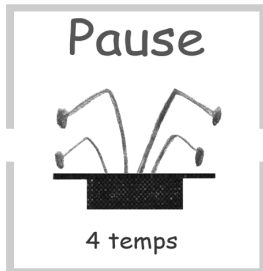
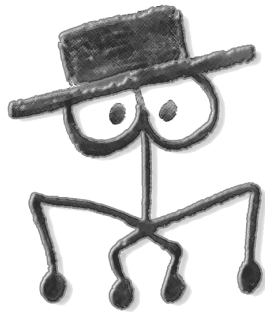
There are ten flowers, each connected to a note on the staff by a vertical line. The flowers are arranged in two rows. The top row has five flowers, and the bottom row has five flowers. The flowers are simple line drawings with scalloped edges and some have stems with leaves.

Écris le nom des notes

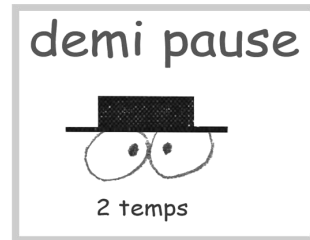
A musical staff with a treble clef. The notes from left to right are: a quarter note on the first line (G4), a quarter note on the second line (A4), a half note on the second space (B4), a quarter note on the second space (B4), a quarter note on the second space with a smiling face character (B4), a quarter note on the second space (B4), a quarter note on the second space (B4), a half note on the second space with a robot character (B4), a quarter note on the second space with a smiling face character (B4), a quarter note on the second space (B4), and a quarter note on the second space (B4). Below the staff are two rows of circles connected by lines to the notes above. The first row contains: a circle connected to the first note, a circle connected to the second note, a sun-like character connected to the third note, a circle connected to the fourth note, a circle connected to the fifth note, a circle connected to the sixth note, a circle connected to the seventh note, a circle connected to the eighth note, a circle connected to the ninth note, a sun-like character connected to the tenth note, a circle connected to the eleventh note, and a circle connected to the twelfth note. The second row contains: a circle connected to the first note, a circle connected to the second note, a circle connected to the third note, a circle connected to the fourth note, a circle connected to the fifth note, a circle connected to the sixth note, a circle connected to the seventh note, a circle connected to the eighth note, a circle connected to the ninth note, a circle connected to the tenth note, a circle connected to the eleventh note, and a circle connected to the twelfth note.

A musical staff with a treble clef. The notes from left to right are: a quarter note on the first line (G4), a quarter note on the first space (F4) with a smiling face character, a quarter note on the first space (F4), a quarter note on the first space (F4), a quarter note on the first space (F4), a quarter note on the first space (F4), a half note on the first space with a robot character (F4), a quarter note on the first space (F4), a quarter note on the first space with a smiling face character (F4), a quarter note on the first space (F4), a quarter note on the first space (F4), and a half note on the first space (F4). Below the staff are two rows of circles connected by lines to the notes above. The first row contains: a sun-like character connected to the first note, a circle connected to the second note, a circle connected to the third note, a circle connected to the fourth note, a circle connected to the fifth note, a circle connected to the sixth note, a sun-like character connected to the seventh note, a circle connected to the eighth note, a circle connected to the ninth note, a circle connected to the tenth note, a circle connected to the eleventh note, and a circle connected to the twelfth note. The second row contains: a circle connected to the first note, a circle connected to the second note, a circle connected to the third note, a circle connected to the fourth note, a circle connected to the fifth note, a circle connected to the sixth note, a circle connected to the seventh note, a circle connected to the eighth note, a circle connected to the ninth note, a circle connected to the tenth note, a circle connected to the eleventh note, and a circle connected to the twelfth note.

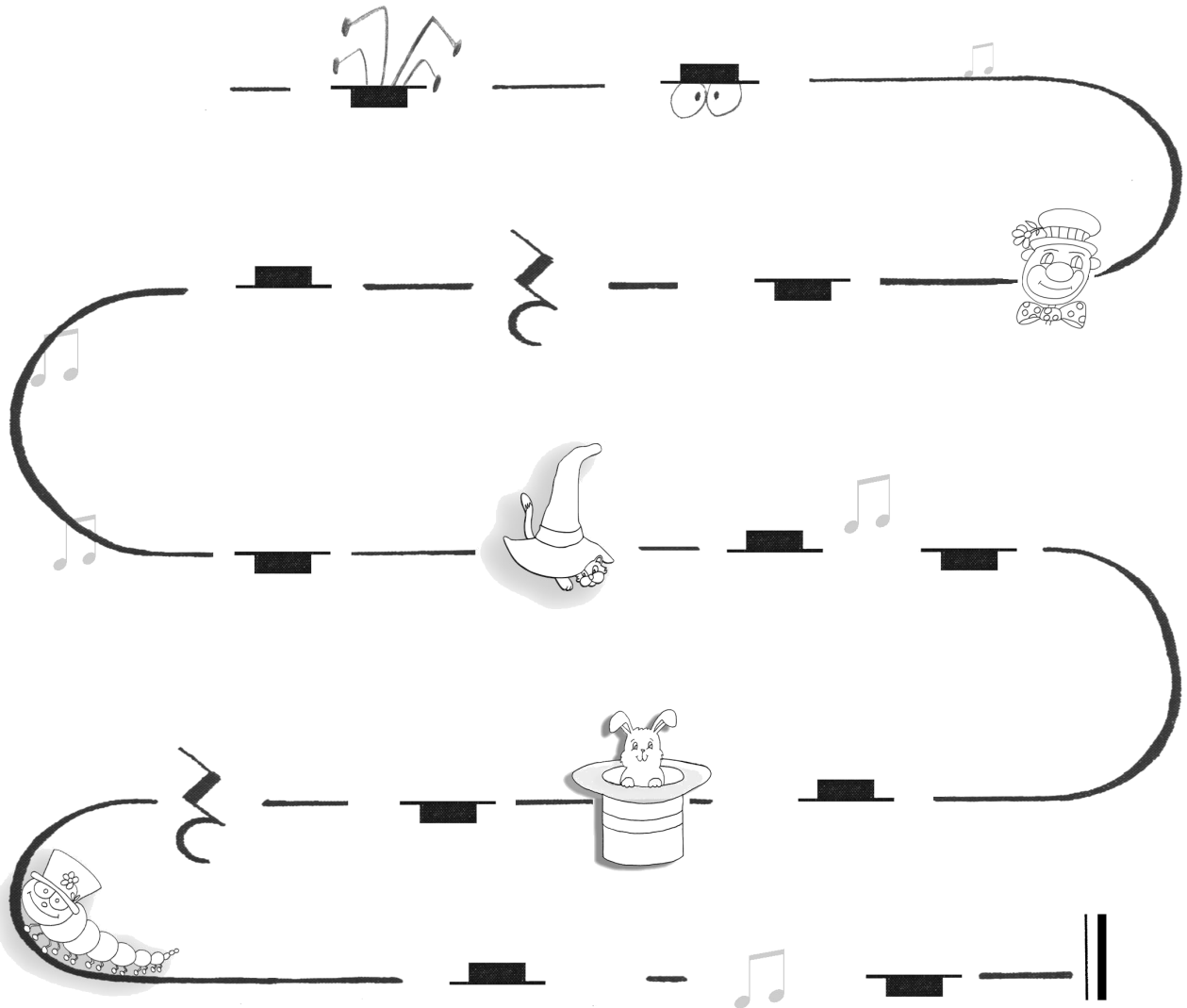
Bonhomme Pause



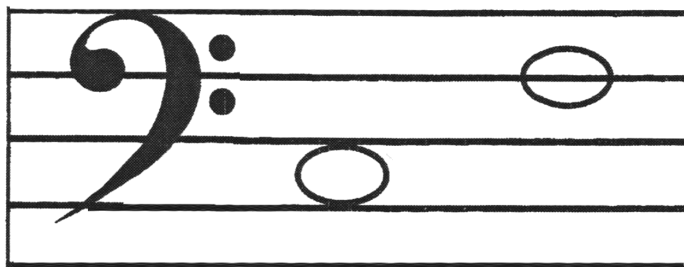
Dessine 4 pattes



Dessine 2 yeux



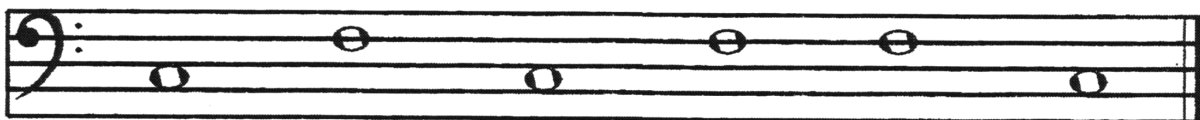
La clé de FA



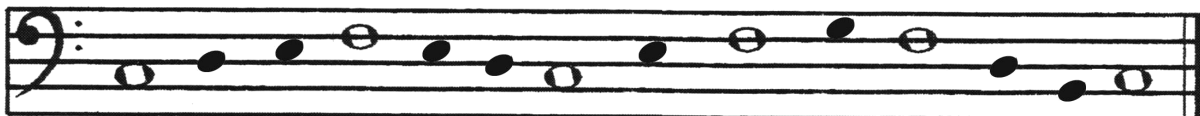
do

fa

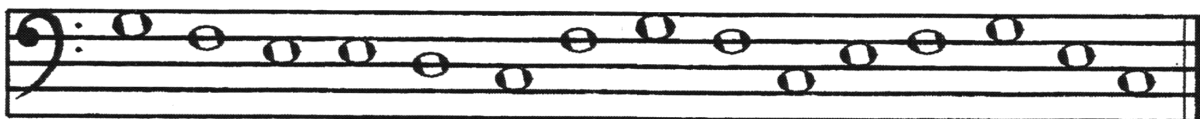
Écris le nom des notes :



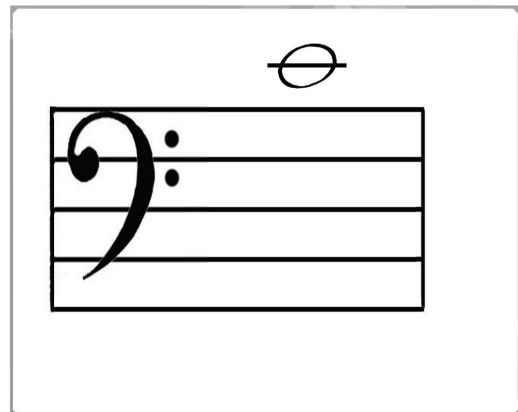
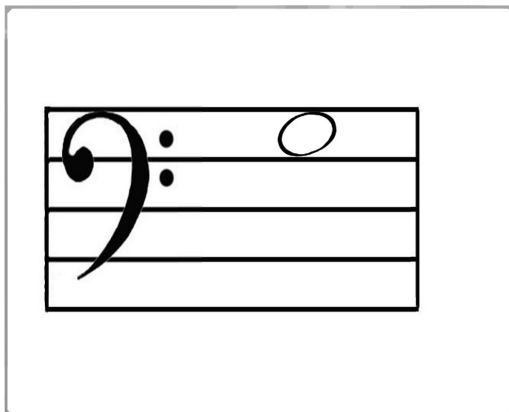
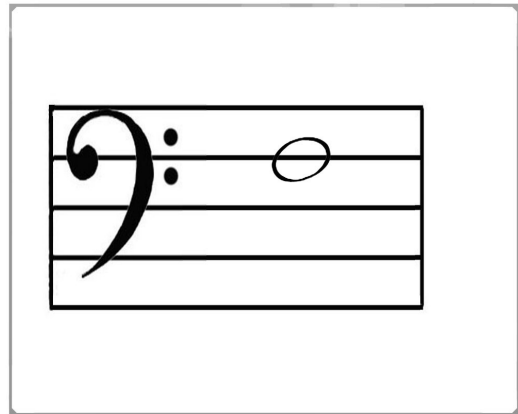
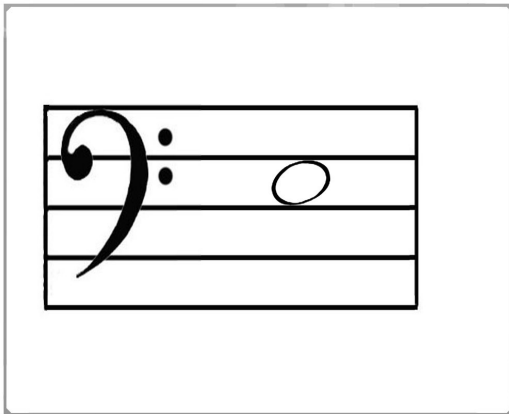
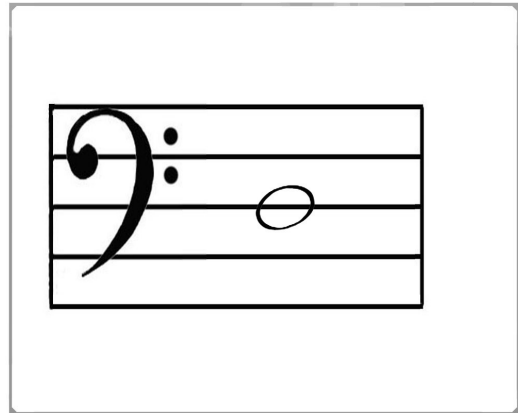
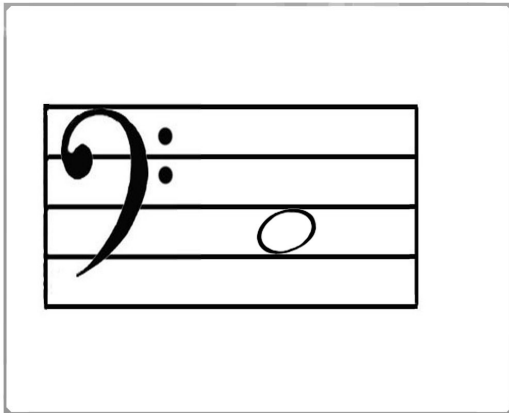
Lis toutes les notes



Écris le nom des notes :



Cartes à découper





A musical staff in treble clef with a 2/4 time signature. The melody consists of the following notes: G4 (quarter), A4 (quarter), B4 (quarter), A4 (quarter), G4 (quarter), F4 (quarter), E4 (quarter), and D4 (half).

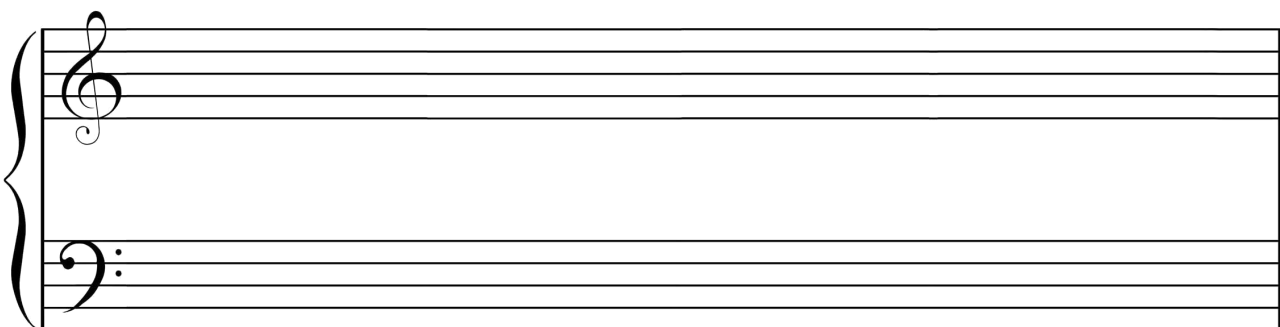
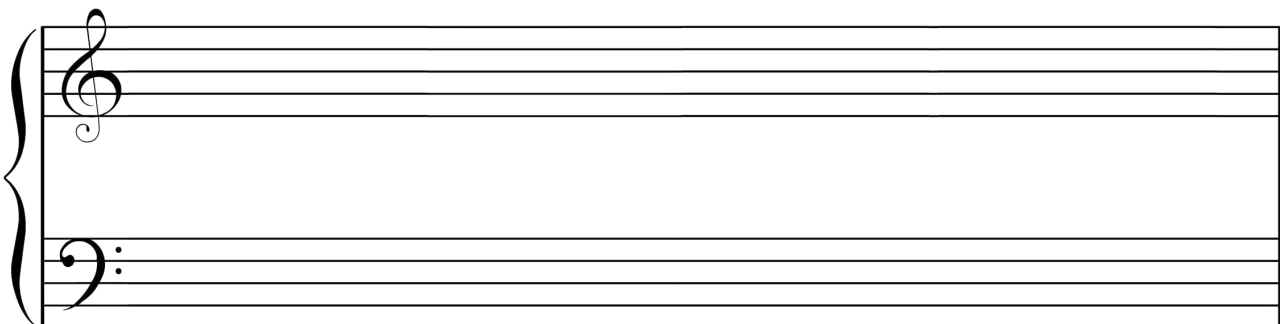
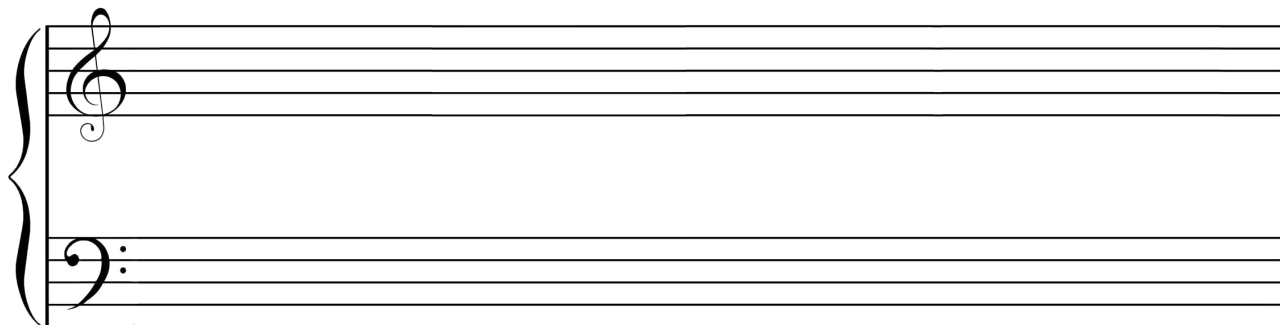


A musical staff in treble clef with a 4/4 time signature. The melody consists of the following notes: G4 (quarter), A4 (quarter), B4 (quarter), A4 (quarter), G4 (quarter), F4 (quarter), E4 (quarter), D4 (quarter), C4 (half), and B3 (half).



A musical staff in bass clef with a 3/4 time signature. The melody consists of the following notes: G3 (quarter), F3 (quarter), E3 (quarter), D3 (quarter), C3 (quarter), B2 (quarter), A2 (quarter), and G2 (half).

Ma composition



Qui suis-je?

Relie le nom à l'image



Frédéric Chopin

Wolfgang Amadeus Mozart

Antonio Vivaldi

Ludwig van Beethoven

Scott Joplin

Jean-Sebastien Bach

