



Bernard Dewagtere

France, SIN LE NOBLE

Gymnopédie 1 (3 Gymnopédies) Satie, Erik

About the artist

Doctor in musicology, conductor and composer.

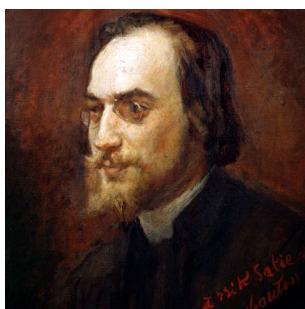
Compositions and arrangements from all eras, in all styles or musical genres and for any instrument or vocal training.

Qualification: PhD Musicology

Associate: SACEM - IPI code of the artist : 342990

Artist page : <https://www.free-scores.com/Download-PDF-Sheet-Music-bernard-dewagtere.htm>

About the piece



Title: Gymnopédie 1 [3 Gymnopédies]
Composer: Satie, Erik
Arranger: Dewagtere, Bernard
Copyright: Copyright © Dewagtere, Bernard
Instrumentation: Organ solo
Style: Romantic
Comment:

Bernard Dewagtere on [free-scores.com](https://www.free-scores.com)

LICENSE

This sheet music requires an authorization
- for public performances
- for use by teachers

Buy this license at :

<https://www.free-scores.com/licence-partition-uk.php?partition=53021>



- listen to the audio
- share your interpretation
- comment
- pay the licence
- contact the artist

Prohibited distribution on other website.

Gymnopédie n°1

à Mademoiselle Jeanne de Bret

Erik Satie (1888)

Transc. : Bernard Dewagtere

Lent et douloureux ♩ = 66

16'

pp

pp

This system contains measures 16 and 17. The top staff (treble clef) has a whole rest for the first four measures, followed by a melodic line starting on G4, moving up to A4, B4, C5, and then down to B4, A4, G4. The middle staff (treble clef) has a piano accompaniment of chords: G4-B4, G4-B4, G4-B4, G4-B4, G4-B4, G4-B4, G4-B4, G4-B4. The bottom staff (bass clef) has a simple bass line: G2, G2, G2, G2, G2, G2, G2, G2.

9

f

pp

f

This system contains measures 9 and 10. The top staff (treble clef) starts with a melodic line on G4, moving up to A4, B4, C5, and then down to B4, A4, G4. The middle staff (treble clef) has a piano accompaniment of chords: G4-B4, G4-B4, G4-B4, G4-B4, G4-B4, G4-B4, G4-B4, G4-B4. The bottom staff (bass clef) has a simple bass line: G2, G2, G2, G2, G2, G2, G2, G2.

18

p

p

This system contains measures 18 and 19. The top staff (treble clef) has a melodic line starting on G4, moving up to A4, B4, C5, and then down to B4, A4, G4. The middle staff (treble clef) has a piano accompaniment of chords: G4-B4, G4-B4, G4-B4, G4-B4, G4-B4, G4-B4, G4-B4, G4-B4. The bottom staff (bass clef) has a simple bass line: G2, G2, G2, G2, G2, G2, G2, G2.

Gymnopédie n°1

2
27

27

36

36

pp

46

46

f

pp

Gymnopédie n°1

55

55

p

p

64

64

73

73