



Bernard Dewagtere

France, SIN LE NOBLE

Gymnopédie 1 (3 Gymnopédies) Satie, Erik

About the artist

Doctor in musicology, conductor and composer.

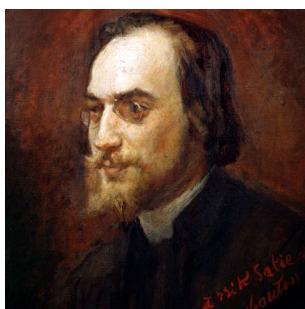
Compositions and arrangements from all eras, in all styles or musical genres and for any instrument or vocal training.

Qualification: PhD Musicology

Associate: SACEM - IPI code of the artist : 342990

Artist page : <https://www.free-scores.com/Download-PDF-Sheet-Music-bernard-dewagtere.htm>

About the piece



Title: Gymnopédie 1 [3 Gymnopédies]

Composer: Satie, Erik

Arranger: Dewagtere, Bernard

Copyright: Copyright © Dewagtere, Bernard

Instrumentation: Trumpet or Bugle or Cornet, piano or organ or guitar

Style: Romantic

Comment:

Bernard Dewagtere on [free-scores.com](https://www.free-scores.com)

LICENSE

This sheet music requires an authorization
- for public performances
- for use by teachers

Buy this license at :

<https://www.free-scores.com/licence-partition-uk.php?partition=53067>



- listen to the audio
- share your interpretation
- comment
- pay the licence
- contact the artist

Prohibited distribution on other website.

Gymnopédie n°2

à Mademoiselle Jeanne de Bret

Erik Satie (1888)

Transc. : Bernard Dewagtere

Lent et douloureux ♩ = 66

Trompette (Sib)
ou Bugle
ou Cornet

pp

GM7 DM7 GM7 DM7 GM7 DM7 GM7 DM7

Piano

pp

Detailed description: This system shows the first eight measures of the piece. The top staff is for Trompette (Sib) or Bugle or Cornet, and the bottom staff is for Piano. The key signature is three sharps (F#, C#, G#) and the time signature is 3/4. The tempo is 'Lent et douloureux' with a quarter note equal to 66 beats per minute. The piano part starts with a piano (pp) dynamic. The trumpet part begins with a piano (pp) dynamic and a long note in the fifth measure. Chord diagrams for GM7 and DM7 are provided for both parts.

pp

GM7 DM7 GM7 DM7 GM7 DM7 GM7 DM7 F#m

Pno

f

Detailed description: This system covers measures 9 to 17. The piano part starts with a forte (f) dynamic. The trumpet part continues with a piano (pp) dynamic. Chord diagrams for GM7, DM7, and F#m are shown. The piano part features a series of chords in the right hand and a steady bass line in the left hand.

p

Bm Em Dm Am Em/D A m/D F#dim/D

Pno

p

Detailed description: This system covers measures 18 to 25. The piano part starts with a piano (p) dynamic. The trumpet part continues with a piano (p) dynamic. Chord diagrams for Bm, Em, Dm, Am, Em/D (7fr.), A m/D (5fr.), and F#dim/D (4fr.) are provided. The piano part features a series of chords in the right hand and a steady bass line in the left hand.

Gymnopédie n°2

27

F/D 8fr. A m/D 5fr. E m/D 7fr. A m/D 5fr. F#dim/D 4fr. E m 6fr. F#m/D B m A/E

Pno

36

F#m/E B m7/Æm7 A m7 D G M7 D M7 G M7 D M7 G M7

Pno

45

D M7 G M7 D M7 G M7 D M7 G M7 D M7 G M7 D M7

Pno

Gymnopédie n°2

54 *p* 3

G M7 D M7 F# m B m E m D m A m E m/D

Pno

63

E m/D A m/D F# dim/D F/D A m/D E m/D A m/D F# dim/D E m

Pno

72

D m/E F/E A m/E F/E B m7/EE m7 A m7 D

Pno