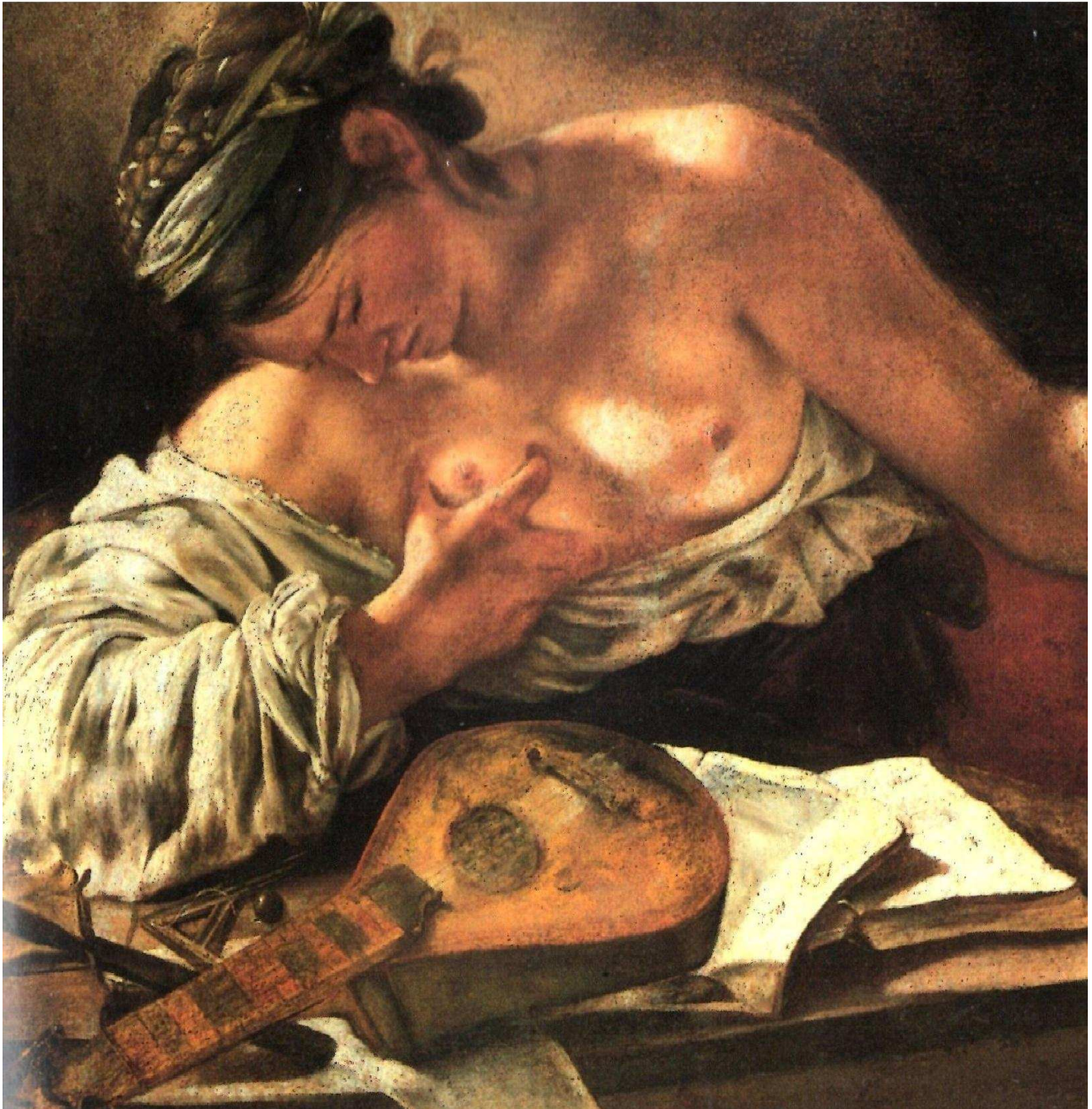


*Claudia Sessa (1570 ca - 1617 ca)*

*"Occhi, io vissi di voi"*

*Dal "Canoro Pianto di Maria Vergine sopra la faccia di Christo estinto", Venezia 1613*

*Versione per Piano solo dall'originale per Voce di Soprano e Basso continuo*



*Giovanni Serodine (1594 -1631), Meditazione sugli strumenti delle Arti liberali, Milano, Pinacoteca Ambrosiana*

*An&An*

© 2021 - All rights reserved

free-scores.com

# Claudia Sessa (1570 ca - 1617 ca)

## "Occhi, io vissi di voi"

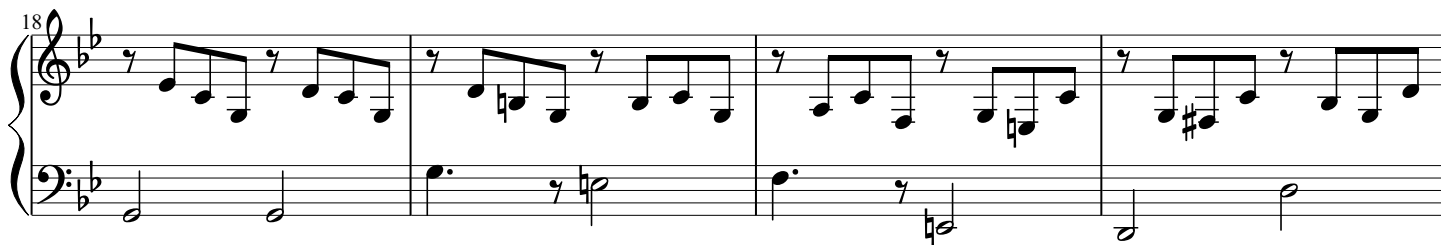
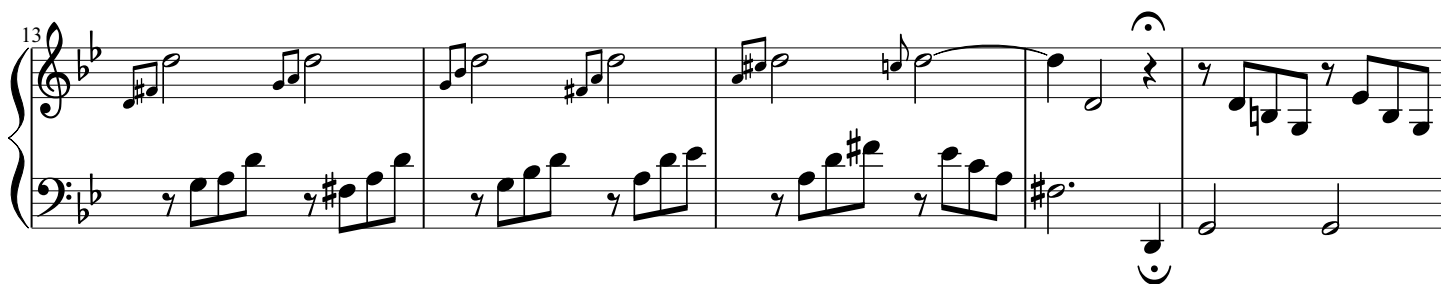
Dal "Canoro Pianto di Maria Vergine sopra la faccia di Christo estinto", Venezia 1613

Versione integrata per Piano solo dall'originale per Voce di Soprano e Basso continuo

Adagio

Arr. An&An

Piano



27

*rall.*

33

Occhi, io vis - si di vo - i men-tre voi fo - sti, ma spen - ti,

40

poi vi - vo di vo - stra mor - te - e. In-fe - li -

46

ce a - li-men - to che mi nu - tre al tor - men - to e mi man-ca al gio-i - n

52

re, al gio - i re,

55

per far vi - va - ce mor-te al mio mar - tire,, al mi - o ma-ar -

This system contains measures 55 to 60. The vocal line is in the treble clef with lyrics. The piano accompaniment is in the bass clef. The key signature has two flats (B-flat and E-flat).

61

ti - re.

This system contains measures 61 to 66. The vocal line continues with the lyrics. The piano accompaniment features a more active melody in the treble clef. The key signature remains two flats.

67

This system contains measures 67 to 70. The piano accompaniment continues with a rhythmic pattern of eighth notes in the treble clef and sustained notes in the bass clef.

71

This system contains measures 71 to 73. The piano accompaniment features a triplet of eighth notes in the treble clef. The key signature changes to one flat (B-flat).

74

This system contains measures 74 to 77. The piano accompaniment continues with a rhythmic pattern of eighth notes in the treble clef. The key signature remains one flat.

78

This system contains measures 78 to 80, ending with a fermata. The piano accompaniment continues with a rhythmic pattern of eighth notes in the treble clef. The key signature remains one flat.

An & An