

# WALZER à la Paganini

von

Johann Strauss

Transposed & Arranged for Solo Cello



MS, US

04/07/2017



# a' la' Paganini

## Walzer 1

Strauss

1

6

11

15

20

24

29

33

37

# a' la' Paganini

## Walzer 2

Strauss

6

Measures 1-5: Bass clef, key signature of two sharps (F# and C#), 3/4 time signature. The music begins with a repeat sign. It features eighth and sixteenth notes, some with accents and slurs. A fermata is placed over the final note of the first measure.

6

Measures 6-9: Continuation of the piece. Measure 6 starts with a fermata. Measure 9 ends with a double bar line.

10

Measures 10-14: Continuation of the piece. Measure 14 ends with a double bar line.

15

Measures 15-18: Continuation of the piece. Measure 18 ends with a double bar line.

19

Measures 19-23: Continuation of the piece. Measure 23 ends with a double bar line.

24

Measures 24-27: Continuation of the piece. Measure 27 ends with a double bar line.

28

Measures 28-32: Continuation of the piece. Measure 32 ends with a double bar line.

33

Measures 33-36: Continuation of the piece. Measure 36 ends with a double bar line.

# a' la' Paganini

Walzer 3

Strauss

6

10

14

19

23

27

31

36

4

# a' la' Paganini

Walzer 4

Strauss

6

10

15

19

24

28

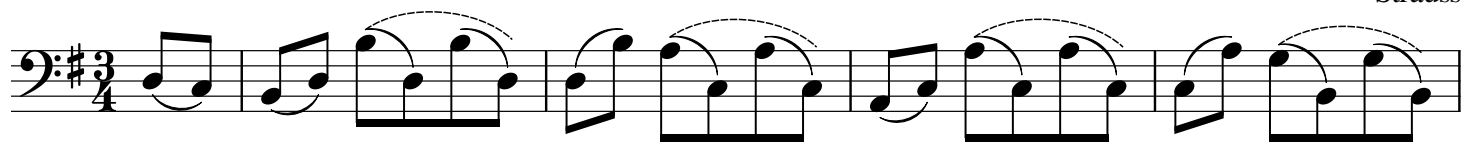
33

JSH

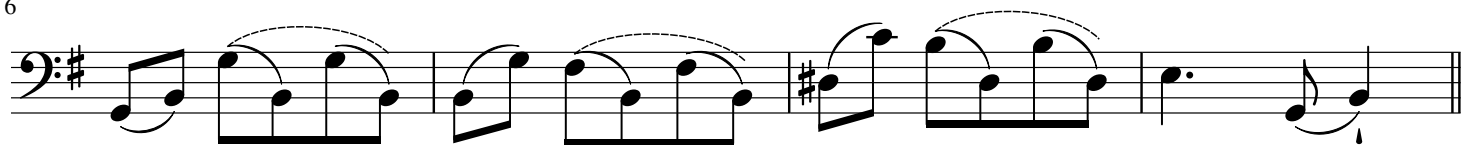
# a' la' Paganini

## Walzer 5

Strauss



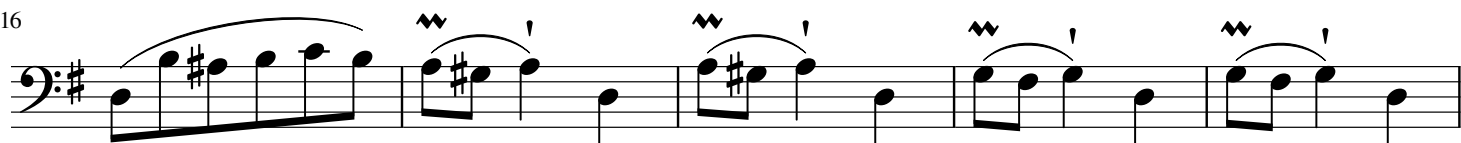
6



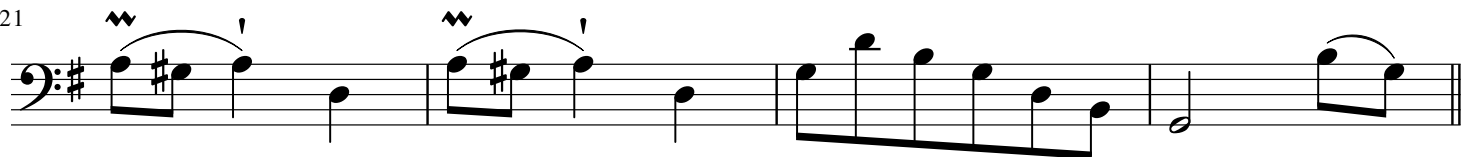
10



16



21



25



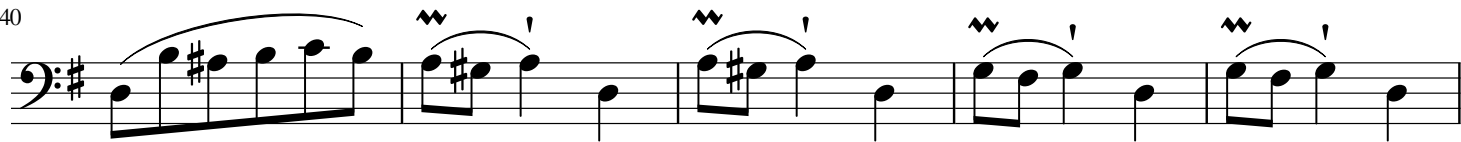
30



35



40



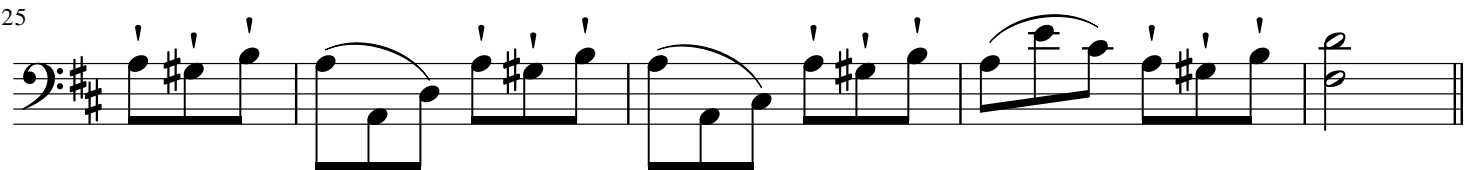
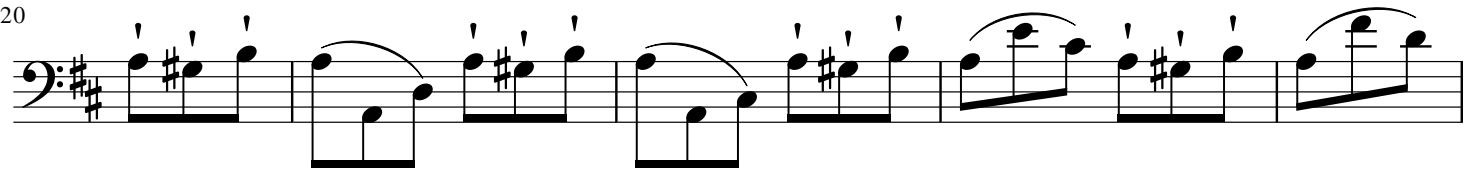
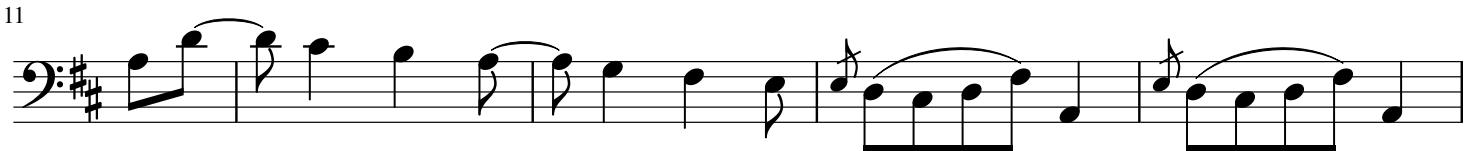
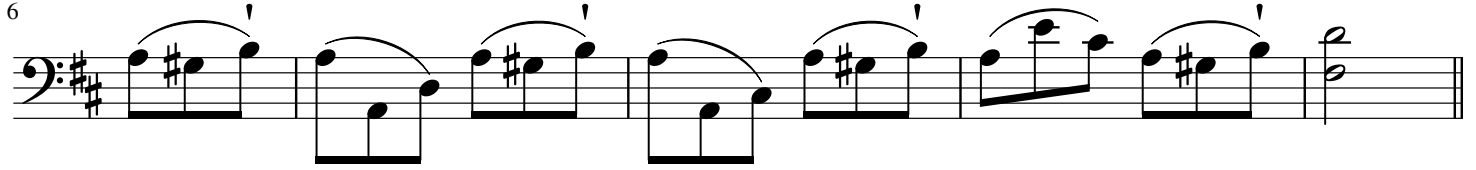
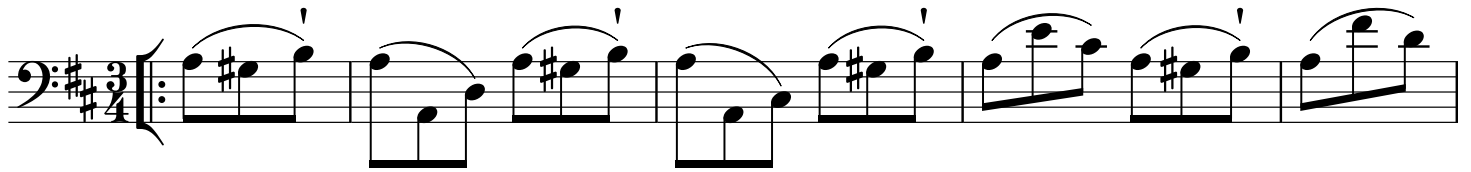
45



# a' la' Paganini

## Walzer 6

Strauss



# a' la' Paganini

Coda

Strauss

1

6

11

17

22

27

32

36



# a' la' Paganini

Coda Continued

Strauss

41

45

50

55

60

64

69

73