

CONTROVERSEN.

WALZER

für das

PIANO-FORTE.

Den

HERREN HÖRERN DER RECHTE

an der Hoch-Schule zu Wien

achtungsvoll gewidmet

von

JOHANN STRAUSS.

N^o 11995.

191.^{te} Werk.

Pr. 45x60.

Eigenthum  der Verleger.

Eingetragen in das Archiv  der Musikalien-Verleger.

Wien, bei Carl Haslinger ^{m^o} Tobias,

k. k. Hof- u. priv. Kunst- u. Musikalienhändler.

Leipzig bei B. Hermann.

Paris, bei L. Mayaud & C^o
Petersburg, bei A. Büttner.
Brüssel, bei Geb. Schott.

London, bei Cocks & C^o
Mailand, bei T. Ricordi.
Mendrisio, bei Pozzi.

W. B. Schott & Co.

Contraversen Waltz

Intro

Strauss

1

5

9

13

17

21

25

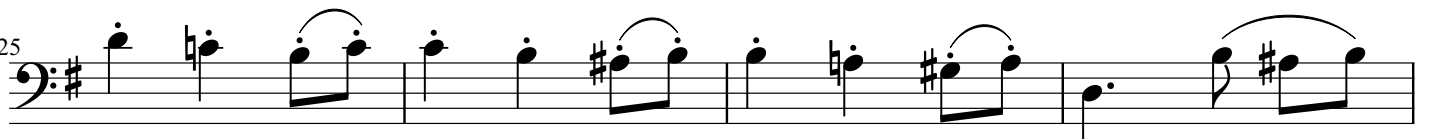
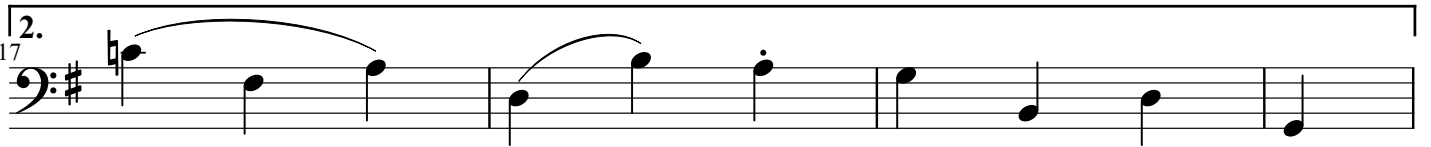
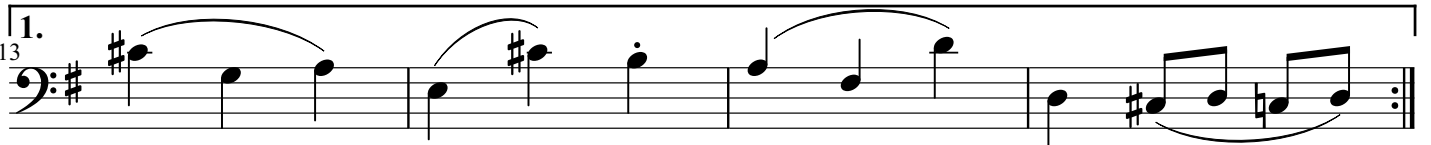
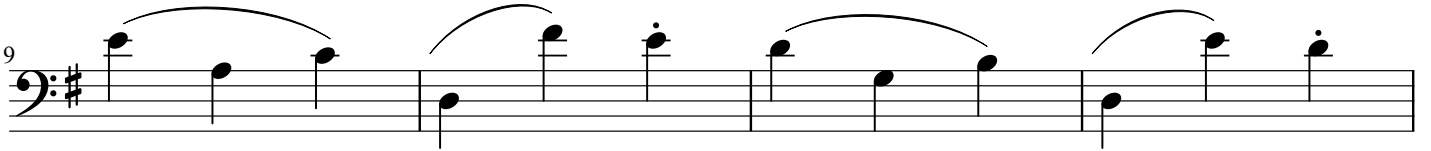
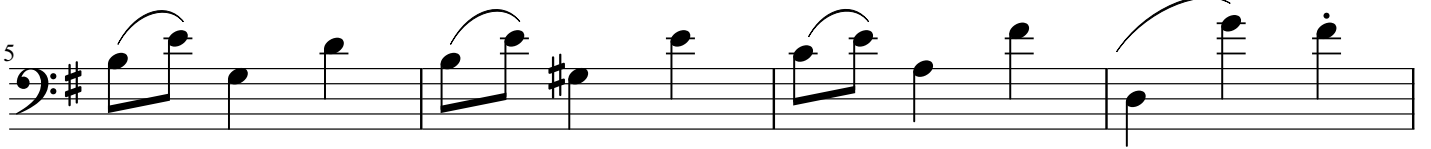
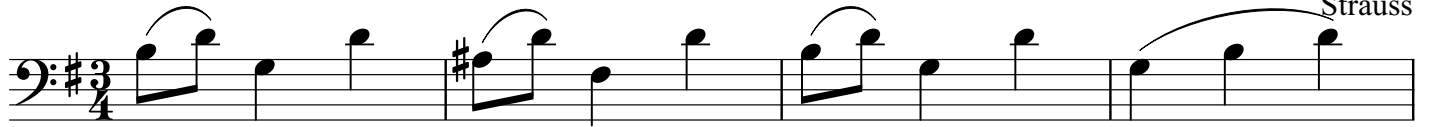
29

33

Contraversen Waltz

Walzer 1

Strauss



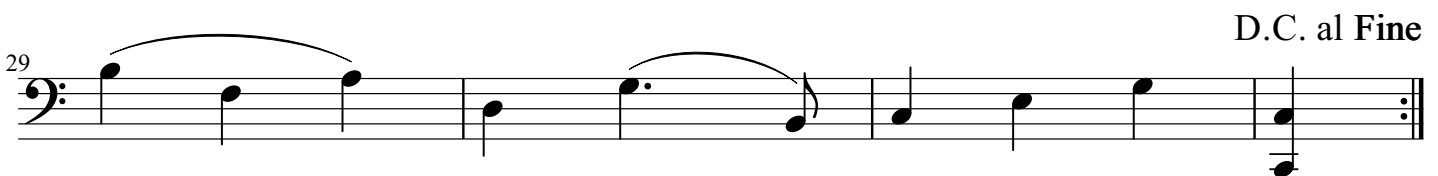
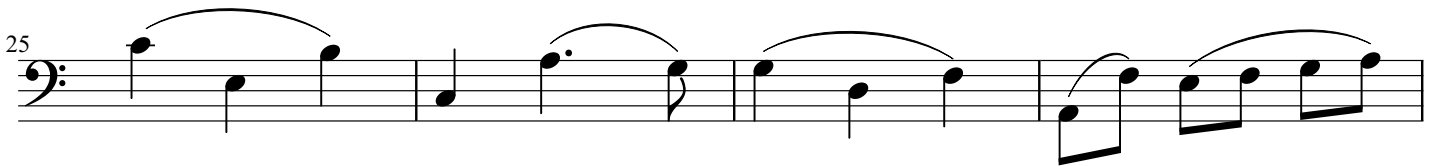
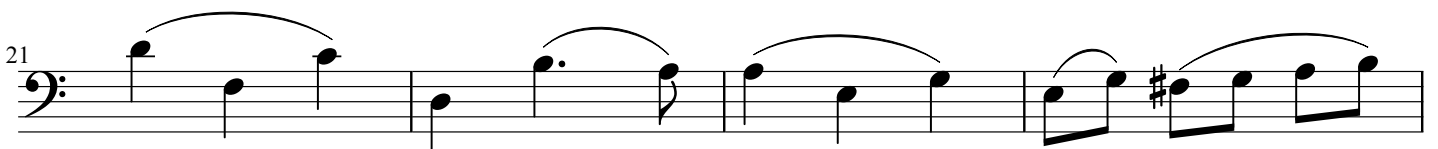
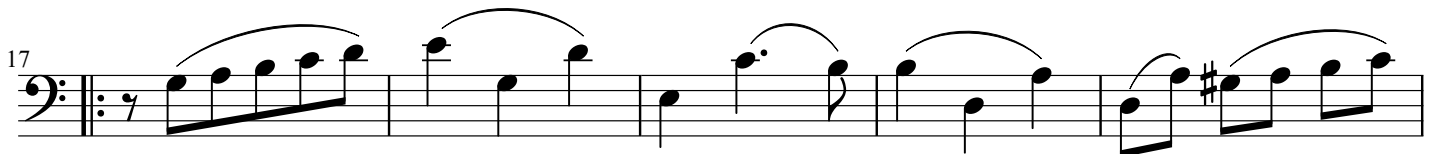
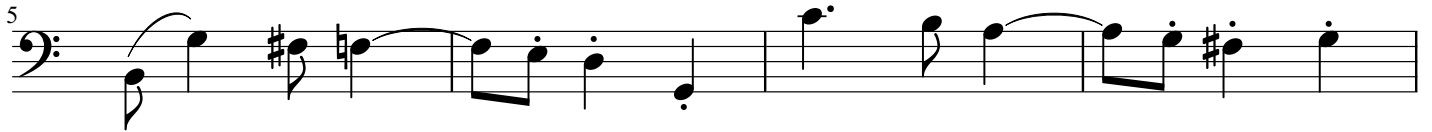
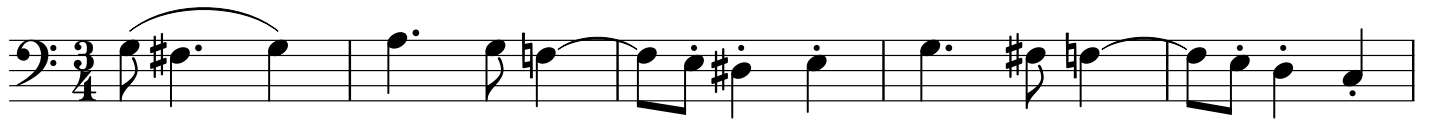
D.C. al Fine



Contraversen Waltz

Waltz 3

Strauss

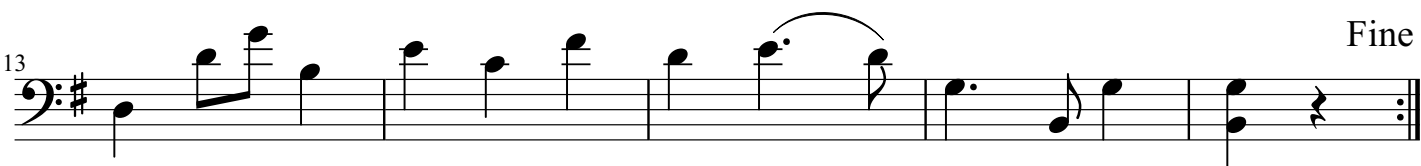
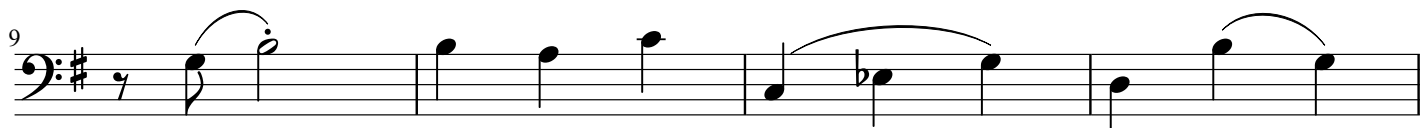
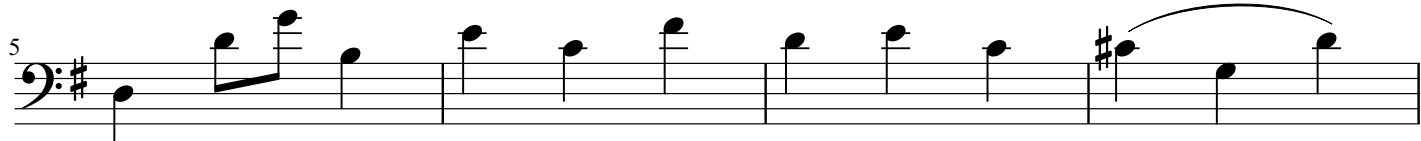
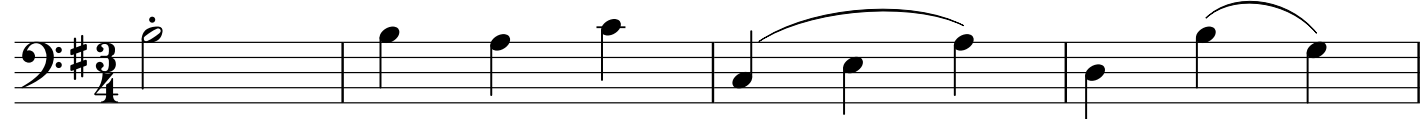


D.C. al Fine

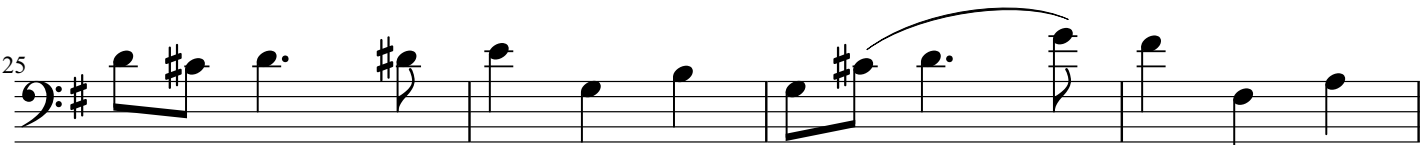
Contraversen Waltz

Waltz 4

Straus



Fine

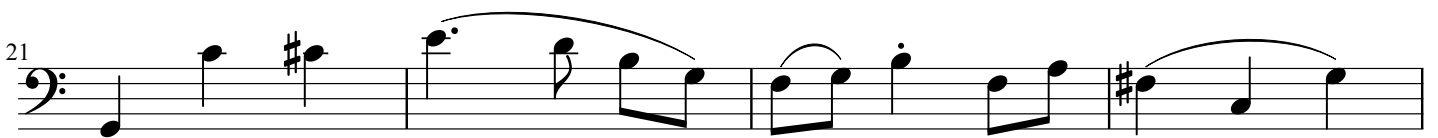
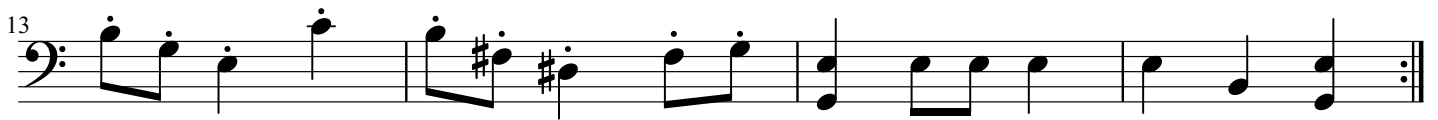
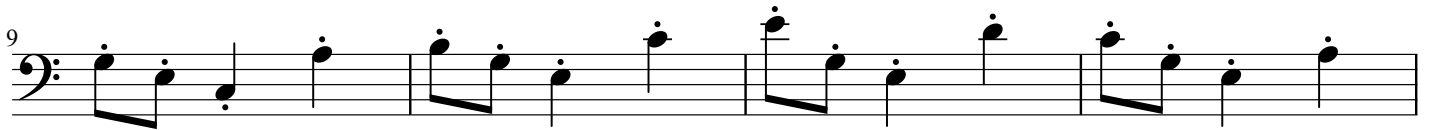
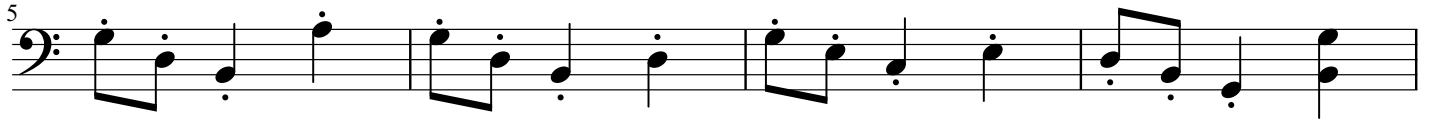
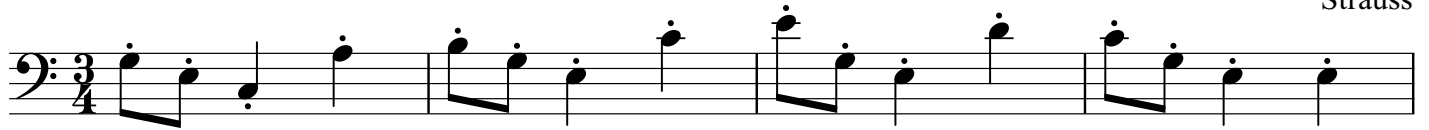


D.C. al Fine

Contraversen Waltz

Waltz 5

Strauss



Contraversen Waltz

Coda

Strauss

First staff of music, bass clef, 3/4 time signature. It begins with a treble clef and a key signature of one flat (B-flat). The melody consists of eighth and quarter notes with various accidentals.

Second staff of music, starting at measure 11. It continues the melody with a key signature change to two flats (B-flat, E-flat) and includes a double bar line.

Third staff of music, starting at measure 18. It features a key signature change to one flat (B-flat) and includes a double bar line.

Fourth staff of music, starting at measure 25. It features a key signature change to two sharps (F-sharp, C-sharp) and continues with eighth and quarter notes.

Fifth staff of music, starting at measure 34. It continues the melody with a key signature of two sharps (F-sharp, C-sharp) and includes a dynamic marking of z (zaccato).

Sixth staff of music, starting at measure 42. It continues the melody with a key signature of two sharps (F-sharp, C-sharp).

Seventh staff of music, starting at measure 51. It continues the melody with a key signature of two sharps (F-sharp, C-sharp).

Eighth staff of music, starting at measure 60. It concludes the piece with a key signature of two sharps (F-sharp, C-sharp) and includes a dynamic marking of z (zaccato).

Contraversen Waltz

Coda Cont.

Strauss

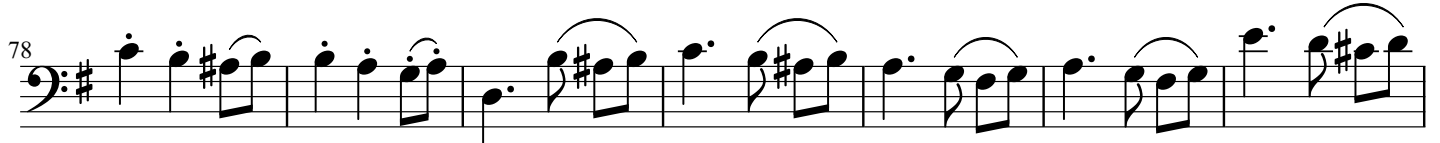
65



72



78



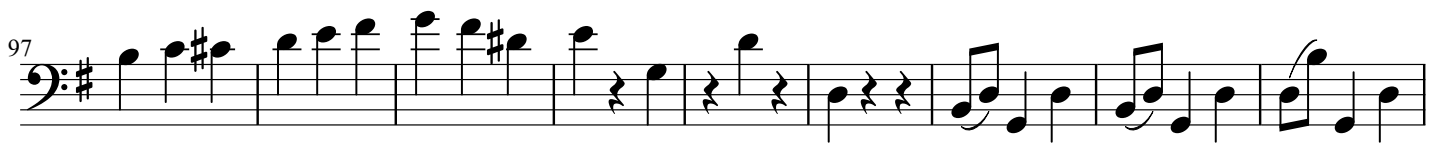
85



91



97



106



114

