

Die Extravaganten

Introduction

Strauss

5

5

9

9

13

13

17

17

21

21

25

25

29

29

33

33

37

37

Die Extravaganten

Walzer 1

Strauss

5/4

Measures 1-4: Bass clef, 5/4 time signature. Measure 1 starts with a repeat sign. The melody consists of quarter notes with slurs: G4, A4, B4, C5, D5, E5, F5, G5. Measure 2 continues: A5, B5, C6, D6, E6, F6, G6. Measure 3 has a quarter rest followed by G6, F6, E6, D6. Measure 4 continues: C6, B5, A5, G5.

5

Measures 5-8: Bass clef. Measure 5: quarter rest, G5, A5, B5, C6, D6, E6, F6. Measure 6: G6, A6, B6, C7, D7, E7, F7, G7. Measure 7: quarter rest, G7, F7, E7, D7. Measure 8: C7, B6, A6, G6, quarter rest.

9

Measures 9-12: Bass clef. Measure 9: accent (>) over G5, A5, B5, C6, D6, E6, F6, G6. Measure 10: accent (>) over A6, B6, C7, D7, E7, F7, G7. Measure 11: eighth notes G7, F7, E7, D7, C7, B6, A6, G6. Measure 12: quarter notes G6, F6, E6, D6, sharp sign (#) over G6, A6, B6, C7.

13

Measures 13-16: Bass clef. Measure 13: accent (>) over G5, A5, B5, C6, D6, E6, F6, G6. Measure 14: accent (>) over A6, B6, C7, D7, E7, F7, G7. Measure 15: eighth notes G7, F7, E7, D7, C7, B6, A6, G6. Measure 16: quarter notes G6, F6, E6, D6, flat sign (b) over G6, A6, B6, C7.

17

Measures 17-20: Bass clef. Measure 17: accent (>) over G5, A5, B5, C6, D6, E6, F6, G6. Measure 18: accent (>) over A6, B6, C7, D7, E7, F7, G7. Measure 19: eighth notes G7, F7, E7, D7, C7, B6, A6, G6. Measure 20: quarter notes G6, F6, E6, D6, sharp sign (#) over G6, A6, B6, C7.

21

Measures 21-24: Bass clef. Measure 21: eighth notes G6, A6, B6, C7, D7, E7, F7, G7. Measure 22: eighth notes G7, F7, E7, D7, C7, B6, A6, G6. Measure 23: quarter notes G6, F6, sharp sign (#) over G6, A6, sharp sign (#) over B6, C7. Measure 24: quarter notes G6, F6, quarter rest, quarter rest.

25

Measures 25-28: Bass clef. Measure 25: repeat sign, quarter notes G5, A5, B5, C6, quarter rest, quarter notes D6, E6, F6, G6. Measure 26: quarter notes G6, A6, B6, C7, quarter rest, quarter notes D7, E7, F7, G7. Measure 27: quarter notes G7, F7, E7, D7, quarter rest, quarter notes C7, B6, A6, G6. Measure 28: quarter notes G6, F6, quarter rest, quarter rest.

29

Measures 29-32: Bass clef. Measure 29: quarter notes G5, A5, B5, C6, quarter rest, quarter notes D6, E6, F6, G6. Measure 30: quarter notes G6, A6, B6, C7, quarter rest, quarter notes D7, E7, F7, G7. Measure 31: quarter notes G7, F7, E7, D7, quarter rest, quarter notes C7, B6, A6, G6. Measure 32: quarter notes G6, F6, sharp sign (#) over G6, sharp sign (#) over A6, B6, C7.

33

Measures 33-36: Bass clef. Measure 33: quarter notes G5, A5, B5, C6, quarter rest, quarter notes D6, E6, F6, G6. Measure 34: quarter notes G6, A6, B6, C7, quarter rest, quarter notes D7, E7, F7, G7. Measure 35: quarter notes G7, F7, E7, D7, quarter rest, quarter notes C7, B6, A6, G6. Measure 36: quarter notes G6, F6, quarter rest, quarter rest.

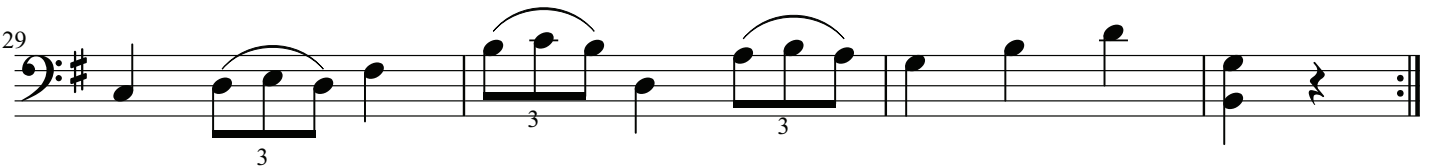
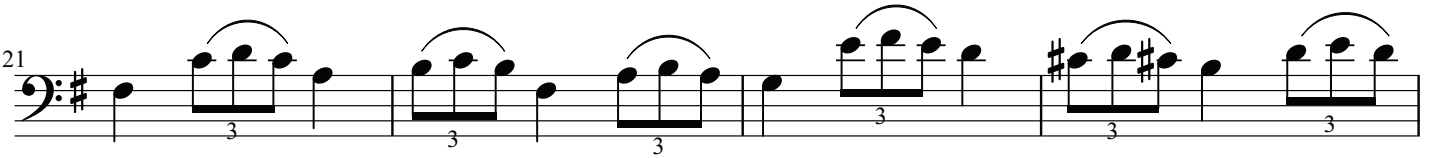
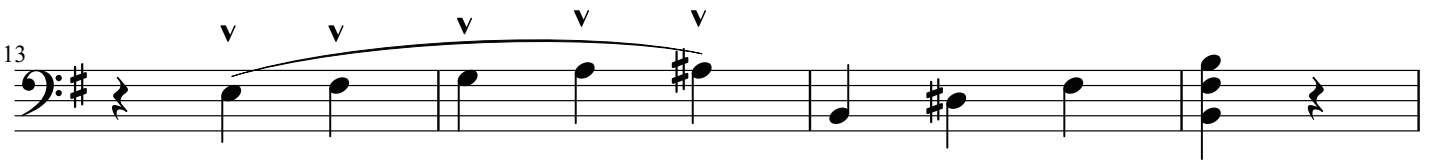
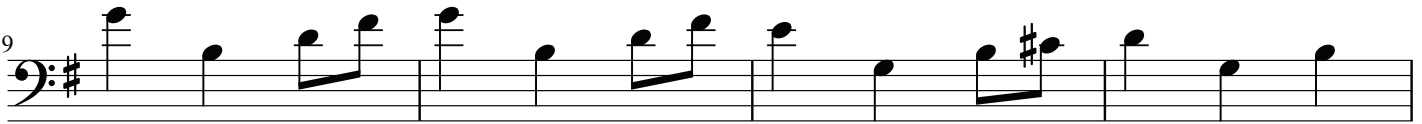
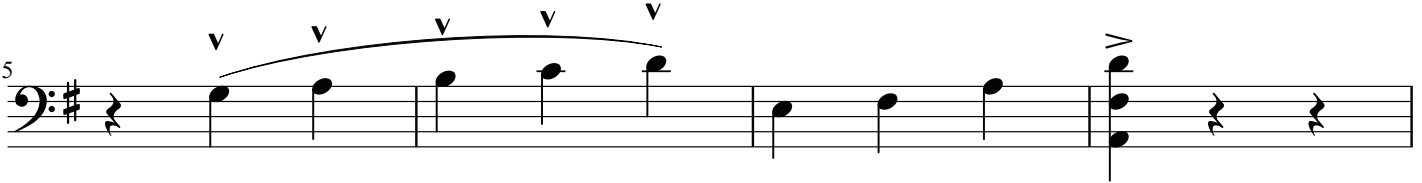
37

Measures 37-40: Bass clef. Measure 37: quarter notes G5, A5, B5, C6, quarter rest, quarter notes D6, E6, F6, G6. Measure 38: quarter notes G6, A6, B6, C7, quarter rest, quarter notes D7, E7, F7, G7. Measure 39: quarter notes G7, F7, E7, D7, quarter rest, quarter notes C7, B6, A6, G6. Measure 40: quarter notes G6, F6, quarter rest, quarter rest, sharp sign (#) over G6, A6, B6, C7.

Die Extravaganten

Walzer 2

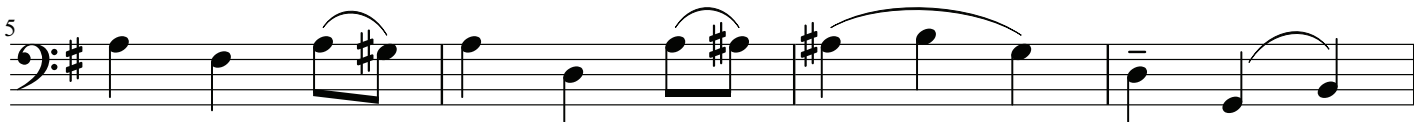
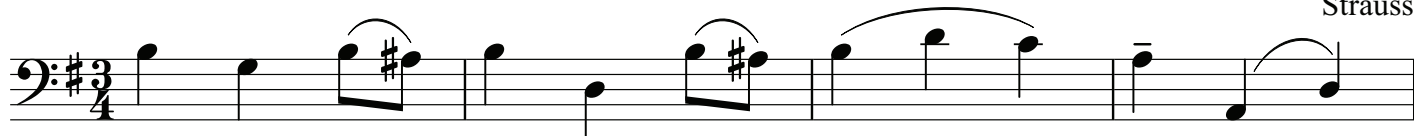
Strauss



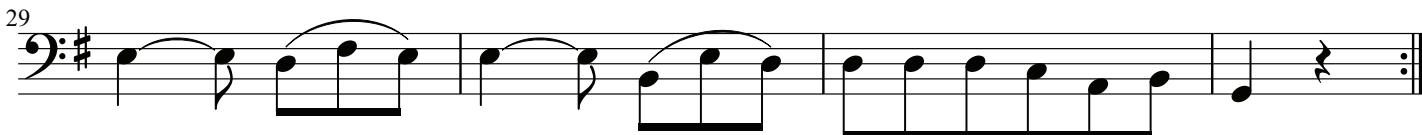
Die Extravaganten

Walzer 3

Strauss



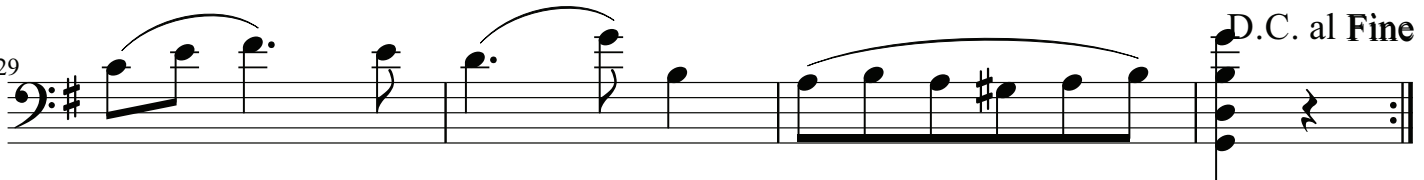
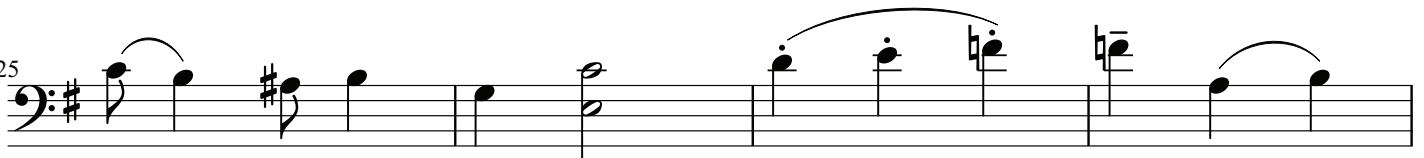
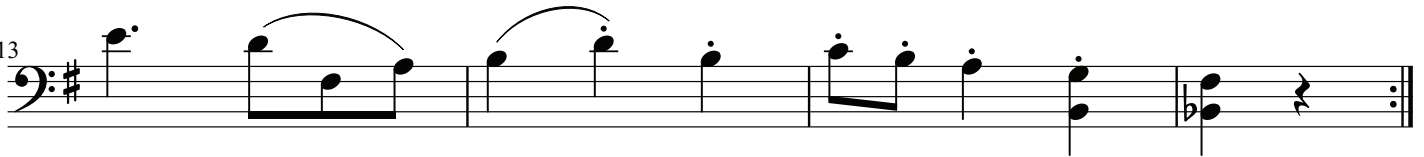
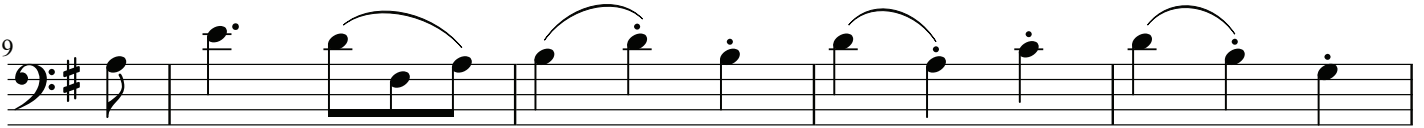
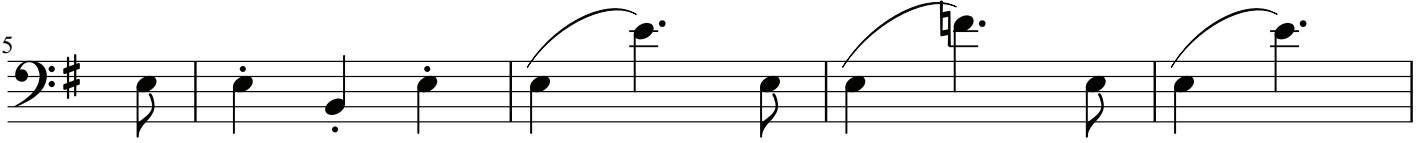
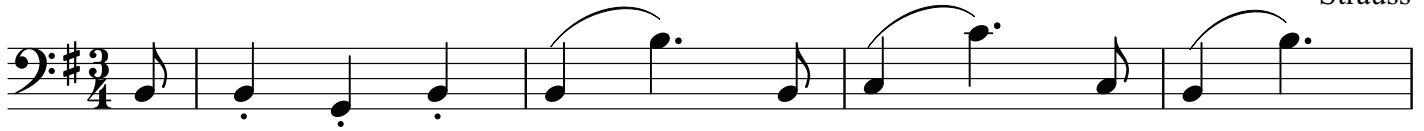
D.C. al Fine



Die Extravaganten

Walzer 4

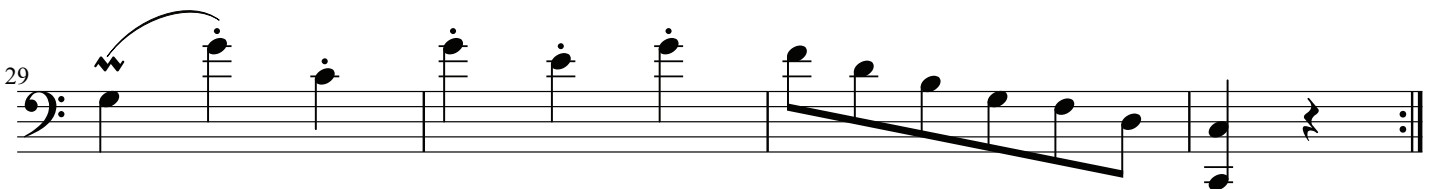
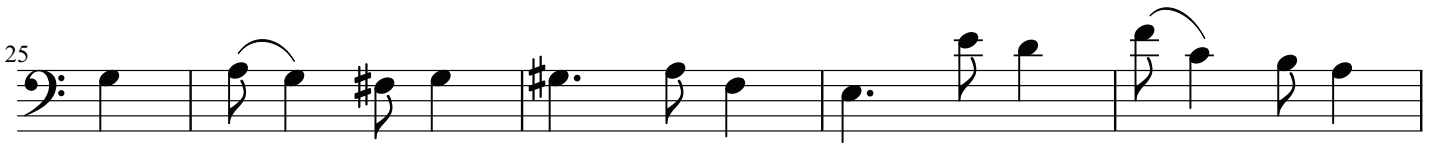
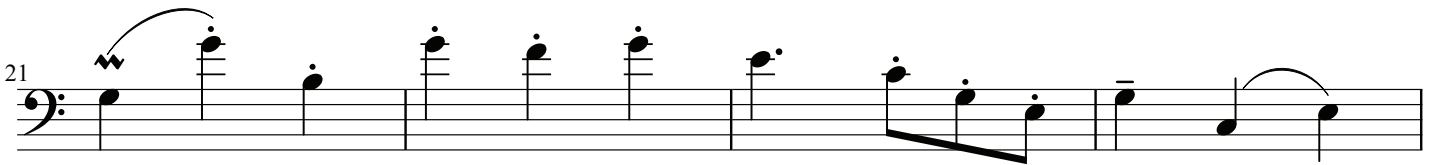
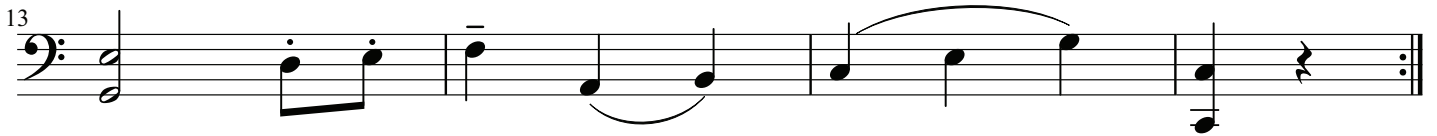
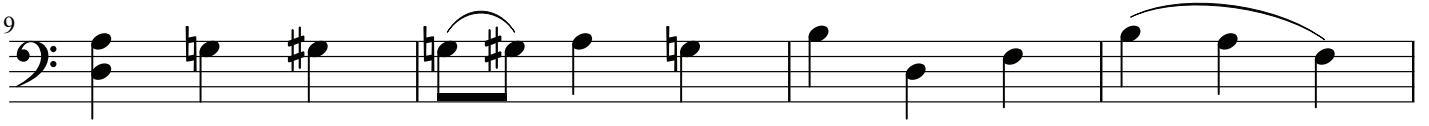
Strauss



Die Extravaganten

Walzer 5

Strauss



Die Extravaganzen

Coda

Strauss

1

6

11

16

21

26

31

36

41

46

Die Extravaganten

Coda Continued

Strauss

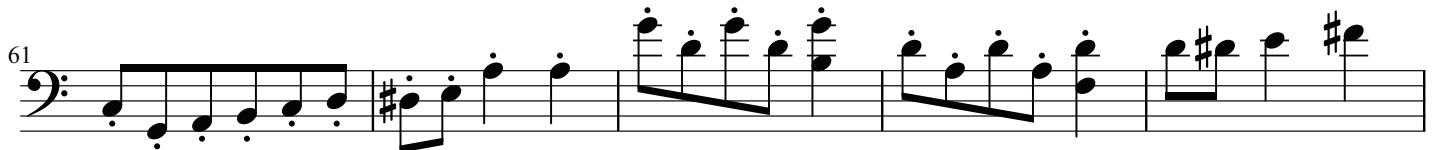
51



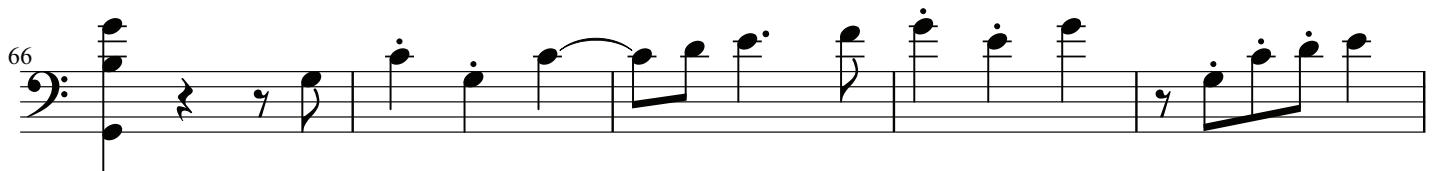
56



61



66



71



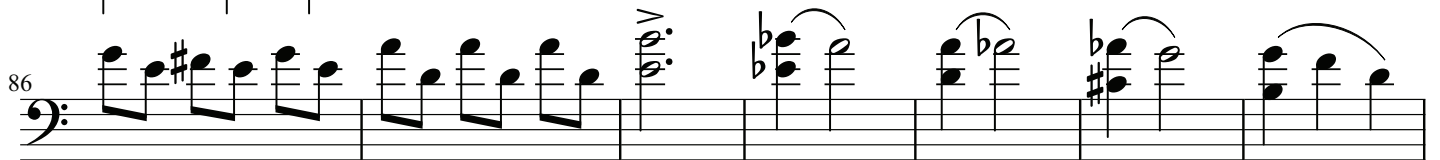
76



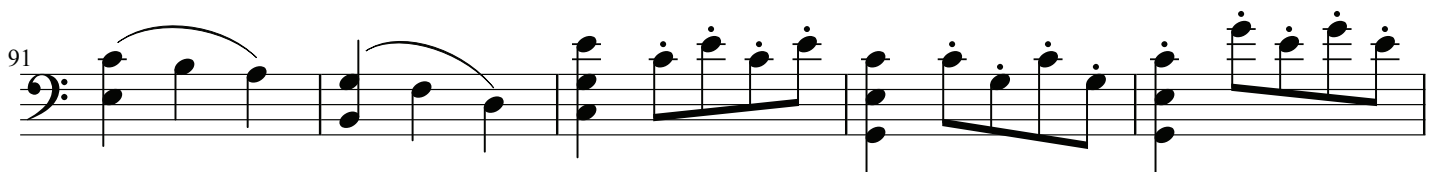
81



86



91



96

