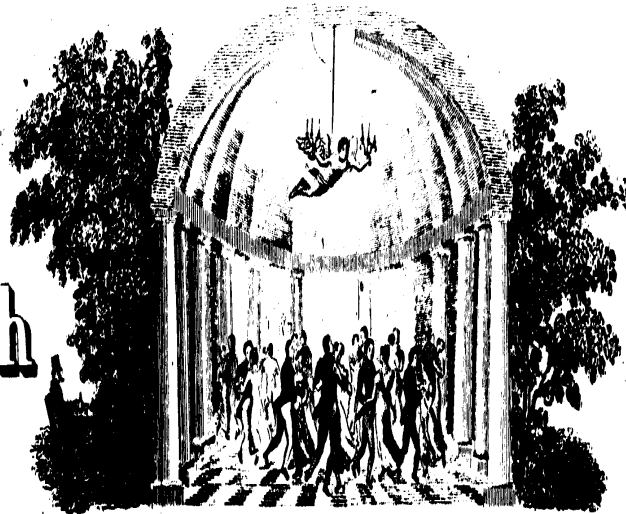


Fort nach



einander!

Wasser

für das Piano-Forte

von

JOHANN STRAUSS.

16tes Werk.

Eigenthum des Verlegers.

Preis für das Piano-Forte 2/4 x C. M.
zu vier Händen 3/6 x C. M.

Wien, bei Tobias Haslinger.

Musikverleger,

am Graben N^o 572, im Hause der ersten österr. Sparkasse.

H^o 5294.
5295

Fortnach-Einder!-Walzer

Eingang

Strauss

Musical notation for the introduction of the waltz. It is written in bass clef with a 3/4 time signature. The first measure contains a sequence of eight eighth notes, with a slur and a '2' above it indicating a second ending. The second measure has a whole rest followed by a quarter note. The third and fourth measures each have a whole rest followed by a quarter note. The fifth measure has a whole rest followed by a quarter note. The sixth measure has a whole rest followed by a quarter note. The seventh measure has a whole rest followed by a quarter note. The eighth measure has a whole rest followed by a quarter note. The piece ends with a double bar line.

Fortnach-Einder!-Walzer

Walzer 1

Strauss

Musical notation for the first waltz, measures 5-8. It is written in bass clef with a 3/4 time signature. Measure 5 starts with a repeat sign and contains a quarter note, a quarter note, and a quarter note. Measure 6 contains a quarter note, a quarter note, and a quarter note. Measure 7 contains a quarter note, a quarter note, and a quarter note. Measure 8 contains a quarter note, a quarter note, and a quarter note. The piece ends with a double bar line.

Musical notation for the first waltz, measures 9-12. It is written in bass clef with a 3/4 time signature. Measure 9 contains a quarter note, a quarter note, and a quarter note. Measure 10 contains a quarter note, a quarter note, and a quarter note. Measure 11 contains a quarter note, a quarter note, and a quarter note. Measure 12 contains a quarter note, a quarter note, and a quarter note. The piece ends with a double bar line.

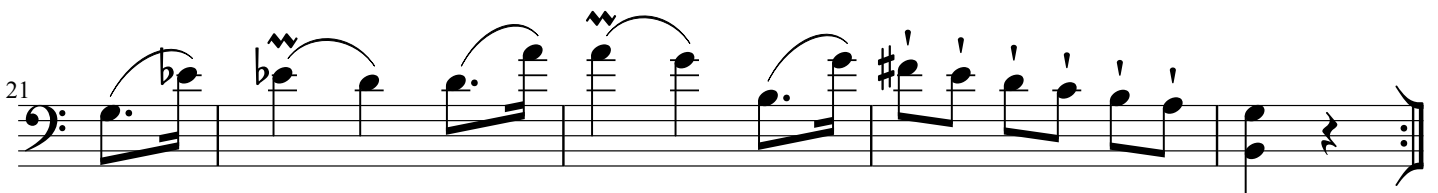
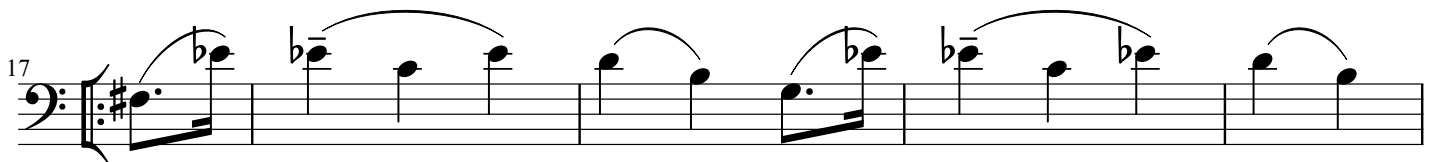
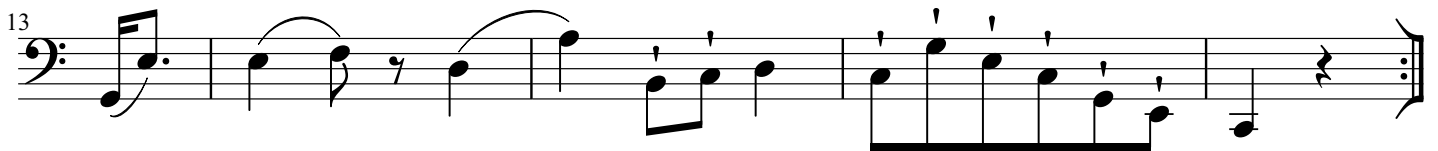
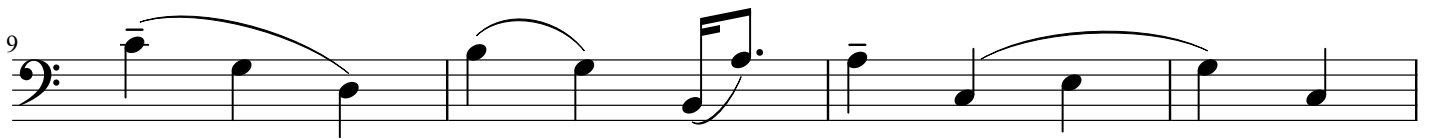
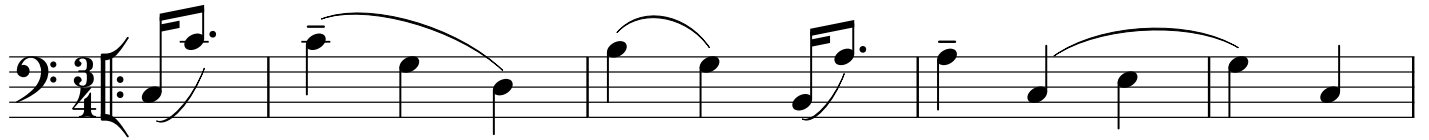
Musical notation for the first waltz, measures 13-16. It is written in bass clef with a 3/4 time signature. Measure 13 contains a quarter note, a quarter note, and a quarter note. Measure 14 contains a quarter note, a quarter note, and a quarter note. Measure 15 contains a quarter note, a quarter note, and a quarter note. Measure 16 contains a quarter note, a quarter note, and a quarter note. The piece ends with a double bar line.

Musical notation for the first waltz, measures 17-20. It is written in bass clef with a 3/4 time signature. Measure 17 contains a quarter note, a quarter note, and a quarter note. Measure 18 contains a quarter note, a quarter note, and a quarter note. Measure 19 contains a quarter note, a quarter note, and a quarter note. Measure 20 contains a quarter note, a quarter note, and a quarter note. The piece ends with a double bar line.

Fortnach-Einder!-Walzer

Walzer 2

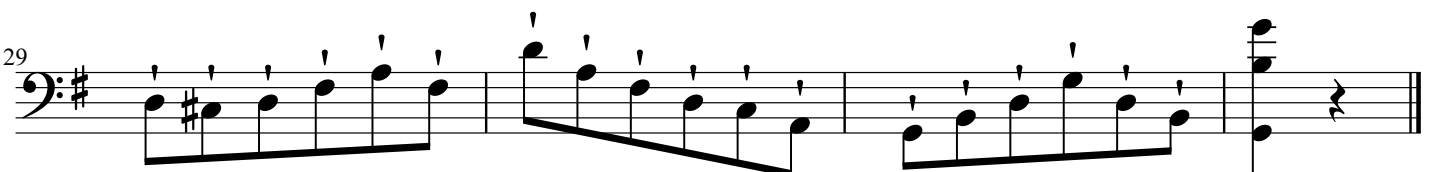
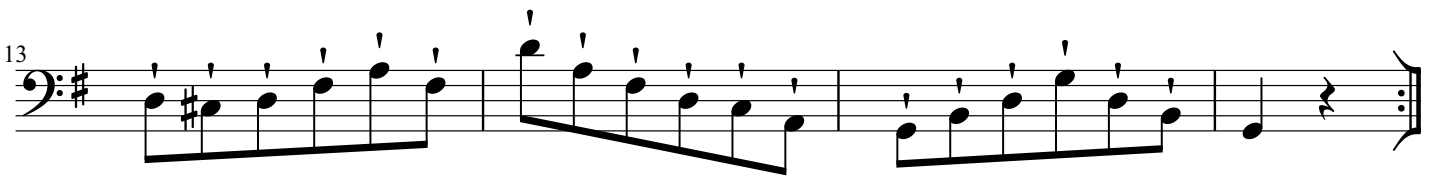
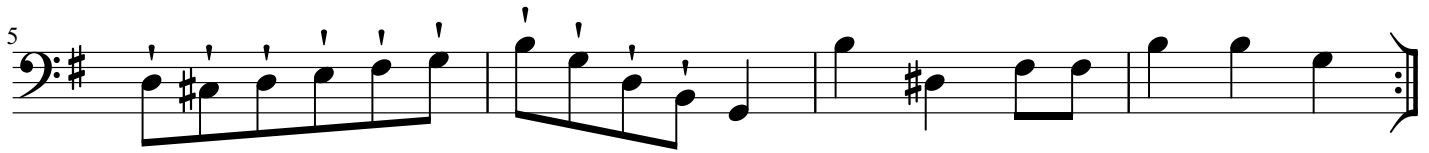
Strauss



Fortnach-Einder!-Walzer

Walzer 3

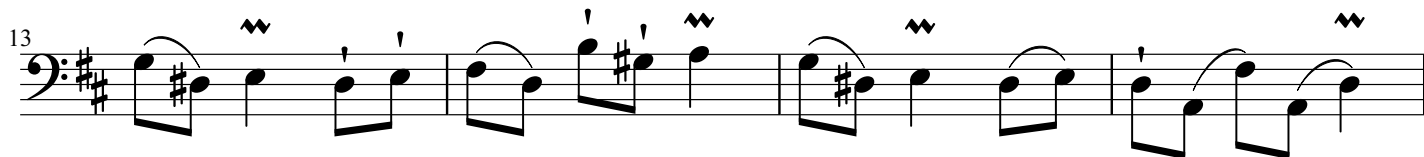
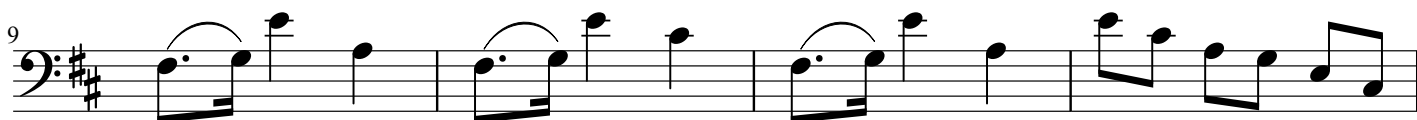
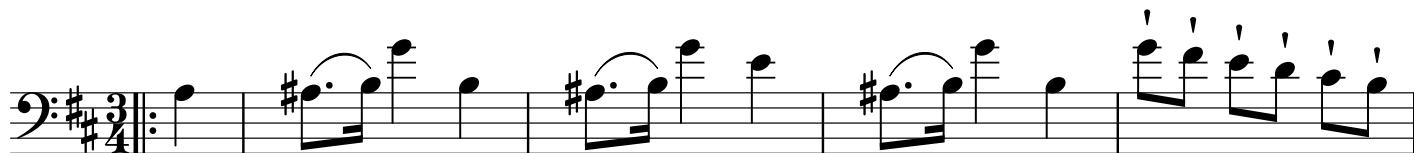
Strauss



Fortnach-Einder!-Walzer

Walzer 4

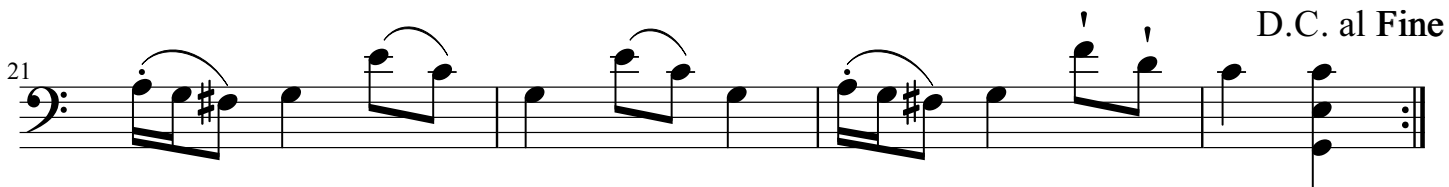
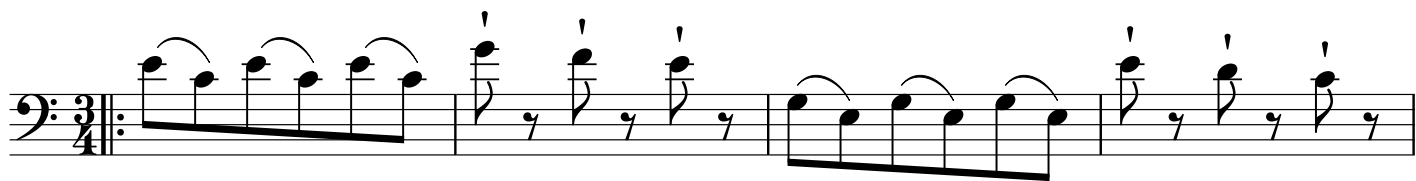
Strauss



Fortnach-Einder!-Walzer

Walzer 5

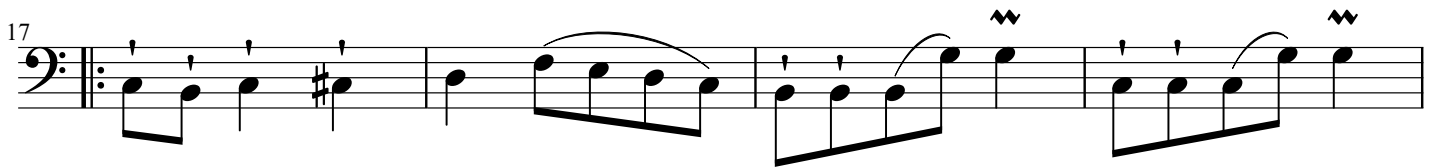
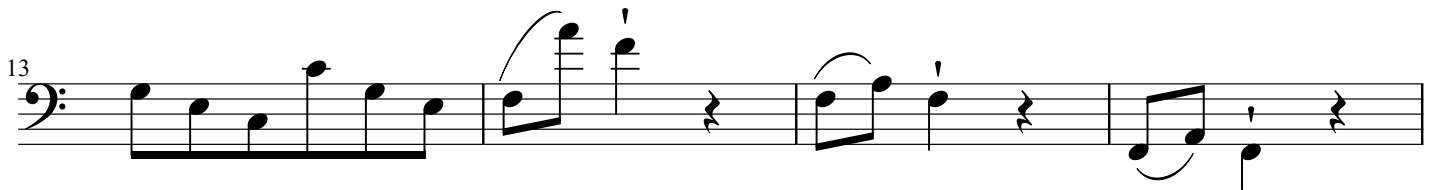
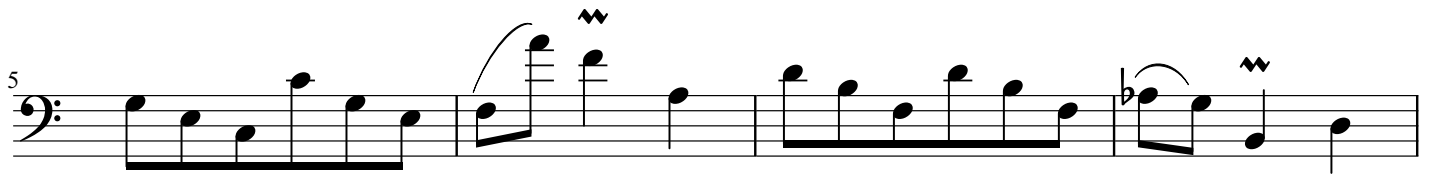
Strauss



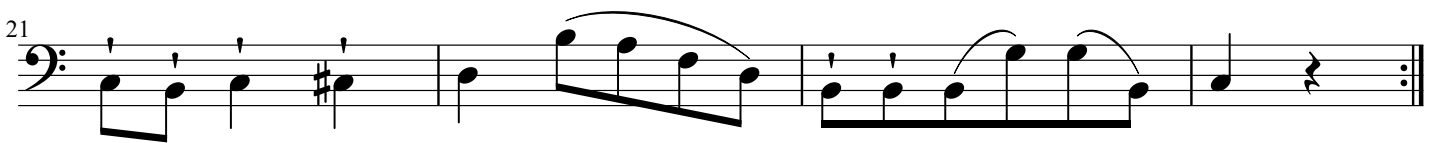
Fortnach-Einder!-Walzer

Walzer 6

Strauss



D.C. al Fine



Fortnach-Einder!-Walzer

Finale

Strauss

