

LIBELLEN.



WALZER
Transposed
For Solo Cello

Herren Hörern der ^{JSH}Technik in Wien

achtungsvoll gewidmet

^{VIII}
JOHANN STRAUSS.

180^{tes} Werk.
Eigenthum der Verleger.

N^o 11885.

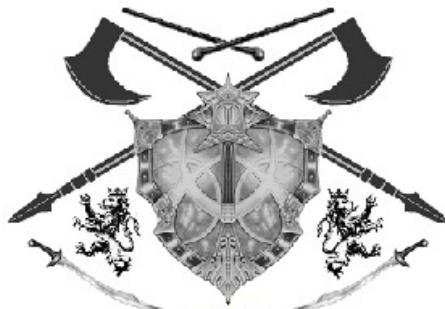
Paris, bei L. Mayaud & C^e.
Petersburg, bei A. Büttner.
Brüssel, bei Geh. Schott.

Eingetragen in das Archiv  der Musikalien-Verleger.

WIEN, bei Carl Haslinger q^m Tobias,
k. k. Hof- u. priv. Kunst- u. Musikalienhändler.
Leipzig, bei B. Hermann.

Preis 45^z C. M.

London, bei Cocks & C^o.
Mailand, bei T. Ricordi.
Mendrisio, bei Pozzi.



JSH

MS. USA

08/25/2016



Libellen

Allegro moderato

Introduction

Strauss

4

7

16

25

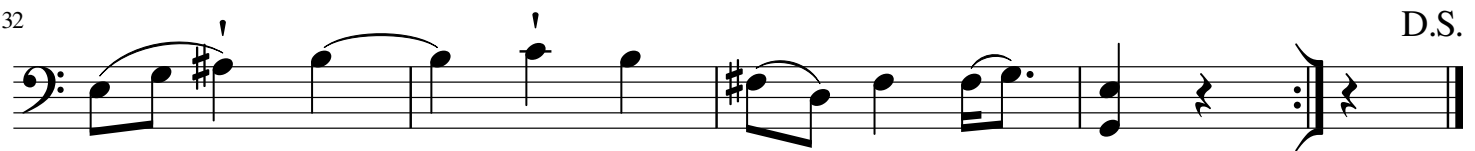
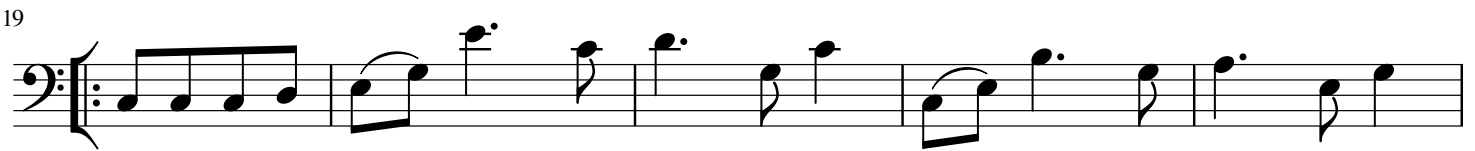
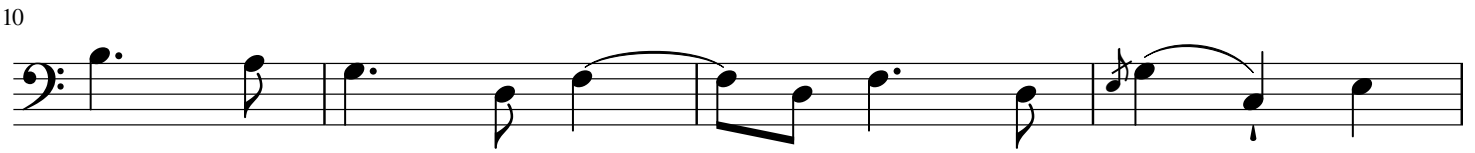
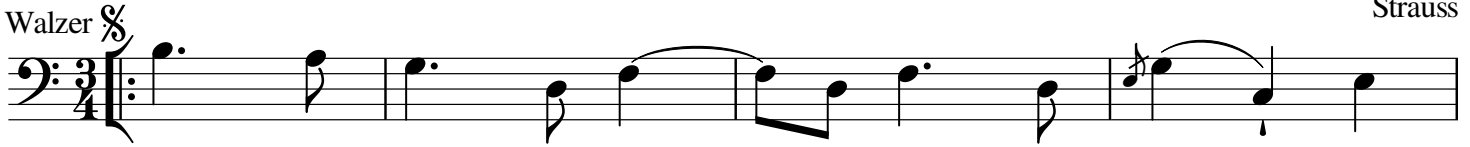
2

Libellen

Walzer 1

Strauss

Walzer $\frac{3}{4}$



Libellen

Walzer 2

Strauss

5

9

13

18

23

28

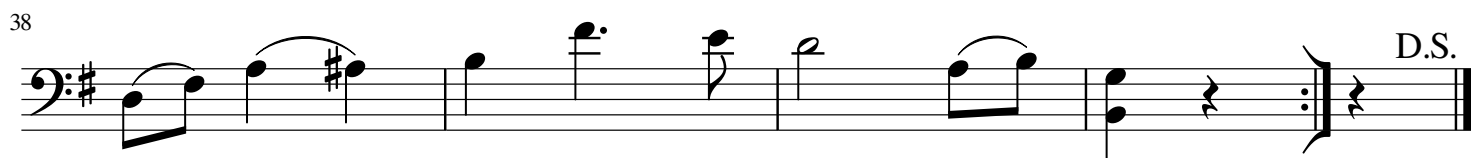
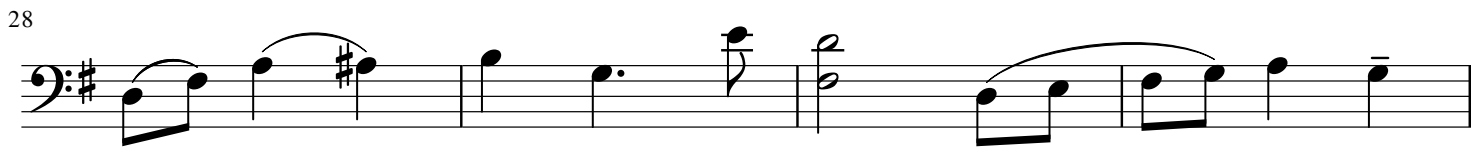
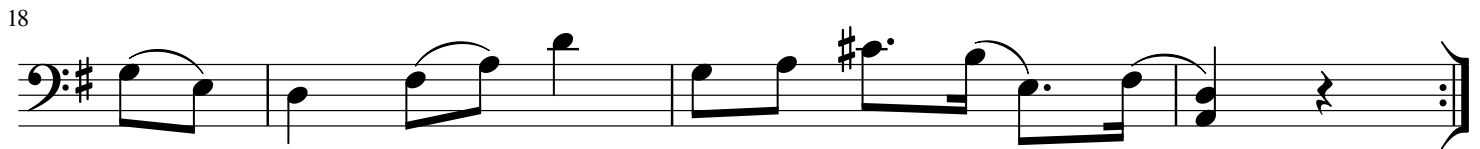
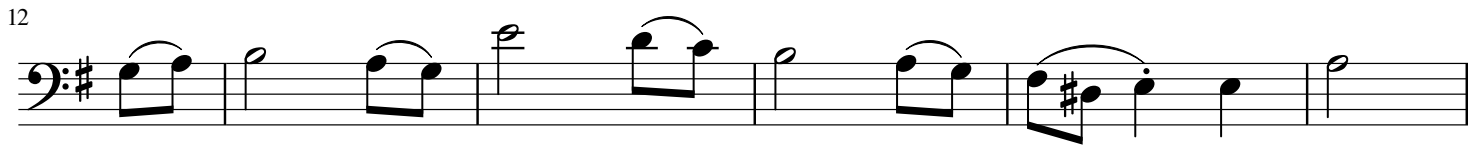
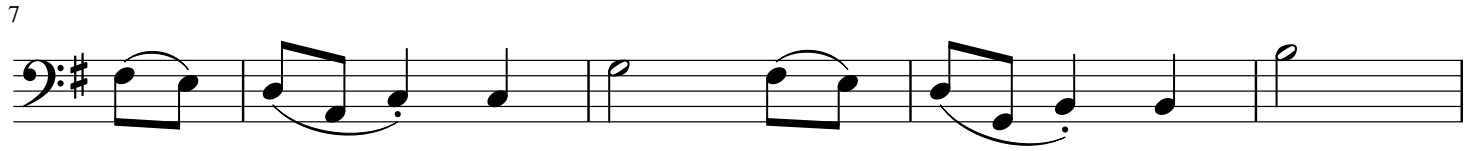
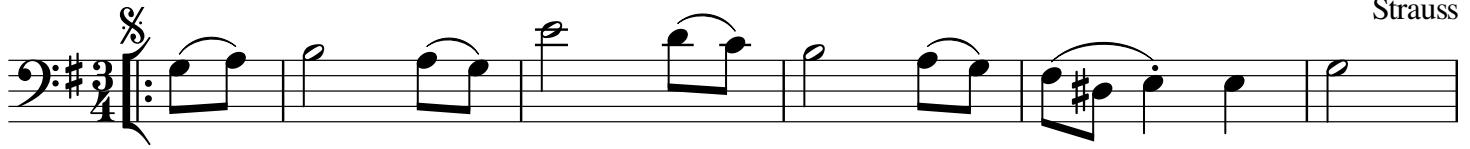
33

D.S.

Libellen

Walzer 3

Strauss



Libellen

Walzer 4

Strauss

5

9

13

17

22

26

30

6

Libellen

Walzer 5

Strauss

Measures 1-4 of the piece. The music is in bass clef, 3/4 time, and the key signature has one sharp (F#). Measure 1 starts with a repeat sign and a first ending bracket. The melody consists of eighth and quarter notes with various ornaments like accents and slurs.

Measures 5-8. The melody continues with eighth and quarter notes, featuring a slur over measures 6-7 and a trill-like ornament in measure 8.

Measures 9-12. This section repeats the melodic pattern from measures 1-4, with a first ending bracket at the end of measure 12.

Measures 13-16. The melody continues with eighth and quarter notes, ending with a double bar line and repeat sign.

Measures 17-21. This section features a new melodic motif with slurs and accents, starting with a first ending bracket.

Measures 22-26. The melody continues with slurs and accents, maintaining the rhythmic pattern of the previous section.

Measures 27-31. This section continues the melodic development with slurs and accents.

Measures 32-35. The final section includes dynamic markings like *p* and *f*, and ends with a double bar line and repeat sign. The text "D.S." is written at the end of the line.

Libellen

Coda

Strauss

1

6

11

16

20

24

28

33

37

41

45

Libellen Coda Cont.

Strauss

50 1.

Measures 50-54, first ending. Bass clef, key signature of one sharp (F#). The melody consists of eighth notes with slurs and accents. Measure 54 ends with a repeat sign.

55 2.

Measures 55-59, second ending. Bass clef, key signature of one sharp (F#). The melody includes slurs, accents, and dynamic markings like *p* and *v*. Measure 59 ends with a fermata.

60

Measures 60-63. Bass clef, key signature of one sharp (F#). The melody features slurs, accents, and dynamic markings like *p* and *v*.

64

Measures 64-67. Bass clef, key signature of one sharp (F#). The melody includes slurs, accents, and dynamic markings like *p* and *v*.

68

Measures 68-71. Bass clef, key signature of one sharp (F#). The melody features slurs and dynamic markings like *p*.

72

Measures 72-76. Bass clef, key signature of one sharp (F#). The melody includes slurs and dynamic markings like *p*.

77

Measures 77-80. Bass clef, key signature of one sharp (F#). The melody features slurs and dynamic markings like *p*.

81

Measures 81-84. Bass clef, key signature of one sharp (F#). The melody includes slurs and dynamic markings like *p*.

85

Measures 85-89. Bass clef, key signature of one sharp (F#). The melody features slurs and dynamic markings like *p*.

90

Measures 90-93. Bass clef, key signature of one sharp (F#). The melody includes slurs, accents, and dynamic markings like *p*.

94

Ritard

Measures 94-97. Bass clef, key signature of one sharp (F#). The melody features slurs and dynamic markings like *p*. Measure 97 ends with a fermata. The word "Coda" is written vertically at the end.