

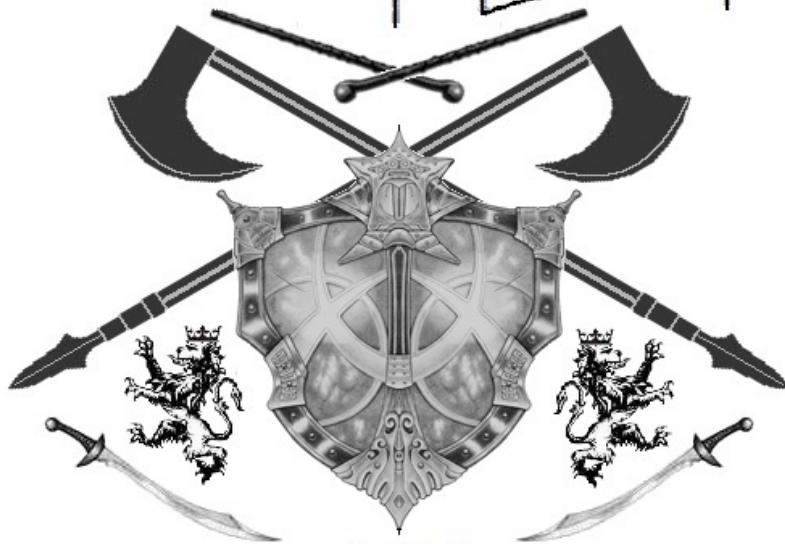
**ALTES LIEDER**  
**WALZER**  
 Transponiert  
 Für Solo Cello  
 von  
**JOHANN STRAUSS**  
 Kapellmeister.  
 114<sup>tes</sup> Werk.

Nº 11.516.

Eigenthum der Verleger.

Preis: 45x C.M.

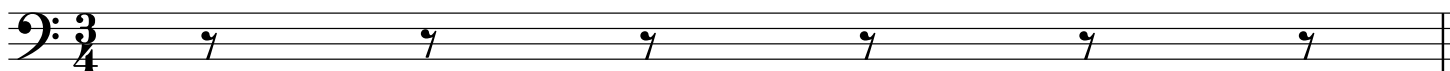
*Eingetragen in das Archiv*  *der Musikalien-Verleger.*



**JSH**

MS. US.

08/28/2016



# Liebes - Lieder

## Introduction

Strauss

Allegretto



# Liebes - Lieder

Walzer 1 Cont.

Strauss

22

# Liebes-Lieder

## Walzer 2

Strauss

5

9

13

18

22

26

30

4

# Liebes-Lieder

## Walzer 3

Strauss

7

13

18

23

28

32

36

40

*f*

D.S.



# Liebes-Lieder

## Walzer 5

Strauss

### Eingang

Musical notation for the 'Eingang' (Introduction) of 'Walzer 5' by Strauss. It is written in bass clef, key of D major (one sharp), and 3/4 time. The melody consists of eighth and quarter notes with various rests and slurs.

### 7 Walzer

Musical notation for the first measure of the 'Walzer' section, starting at measure 7. It features a double bar line with repeat dots, followed by eighth and quarter notes.

11

Musical notation for measures 11-15 of the 'Walzer' section. It continues the melodic line with eighth and quarter notes.

15

Musical notation for measures 16-18 of the 'Walzer' section. It continues the melodic line with eighth and quarter notes.

19

Musical notation for measures 19-22 of the 'Walzer' section. It continues the melodic line with eighth and quarter notes, ending with a double bar line and repeat dots.

23

Musical notation for measures 23-27 of the 'Walzer' section. It continues the melodic line with eighth and quarter notes, featuring slurs and accents.

28

Musical notation for measures 28-31 of the 'Walzer' section. It continues the melodic line with eighth and quarter notes, featuring slurs and accents.

32

Musical notation for measures 32-35 of the 'Walzer' section. It continues the melodic line with eighth and quarter notes, featuring slurs and accents.

36

Musical notation for measures 36-40 of the 'Walzer' section. It continues the melodic line with eighth and quarter notes, ending with a double bar line and repeat dots.

# Liebes-Lieder

Coda

Strauss

First musical staff, measures 1-5. Bass clef, key signature of two sharps (F# and C#), 3/4 time signature. The melody begins with a quarter rest, followed by a dotted quarter note G4, an eighth note F#4, and a quarter note E4. The piece concludes with a double bar line.

Second musical staff, measures 6-11. Bass clef, key signature of two sharps. The melody starts with a quarter note G4, followed by quarter notes F#4, E4, and D4. It then continues with eighth notes C#4, B3, A3, and G3, followed by quarter notes F#3, E3, and D3. The piece concludes with a double bar line.

Third musical staff, measures 12-18. Bass clef, key signature of two sharps. The melody begins with a quarter note G4, followed by quarter notes F#4, E4, and D4. It then continues with eighth notes C#4, B3, A3, and G3, followed by quarter notes F#3, E3, and D3. The piece concludes with a double bar line.

Fourth musical staff, measures 19-24. Bass clef, key signature of two sharps. The melody starts with a quarter note G4, followed by quarter notes F#4, E4, and D4. It then continues with eighth notes C#4, B3, A3, and G3, followed by quarter notes F#3, E3, and D3. The piece concludes with a double bar line.

Fifth musical staff, measures 25-30. Bass clef, key signature of two sharps. The melody begins with a quarter note G4, followed by quarter notes F#4, E4, and D4. It then continues with eighth notes C#4, B3, A3, and G3, followed by quarter notes F#3, E3, and D3. The piece concludes with a double bar line.

Sixth musical staff, measures 31-35. Bass clef, key signature of two sharps. The melody starts with a quarter note G4, followed by quarter notes F#4, E4, and D4. It then continues with eighth notes C#4, B3, A3, and G3, followed by quarter notes F#3, E3, and D3. The piece concludes with a double bar line.

Seventh musical staff, measures 36-40. Bass clef, key signature of two sharps. The melody begins with a quarter note G4, followed by quarter notes F#4, E4, and D4. It then continues with eighth notes C#4, B3, A3, and G3, followed by quarter notes F#3, E3, and D3. The piece concludes with a double bar line.

Eighth musical staff, measures 41-45. Bass clef, key signature of two sharps. The melody starts with a quarter note G4, followed by quarter notes F#4, E4, and D4. It then continues with eighth notes C#4, B3, A3, and G3, followed by quarter notes F#3, E3, and D3. The piece concludes with a double bar line.

Ninth musical staff, measures 46-50. Bass clef, key signature of two sharps. The melody begins with a quarter note G4, followed by quarter notes F#4, E4, and D4. It then continues with eighth notes C#4, B3, A3, and G3, followed by quarter notes F#3, E3, and D3. The piece concludes with a double bar line.

Tenth musical staff, measures 51-55. Bass clef, key signature of two sharps. The melody starts with a quarter note G4, followed by quarter notes F#4, E4, and D4. It then continues with eighth notes C#4, B3, A3, and G3, followed by quarter notes F#3, E3, and D3. The piece concludes with a double bar line.



# Liebes-Lieder

Coda Continued

Strauss

66

62

68

73

78

84

90

96

101

106