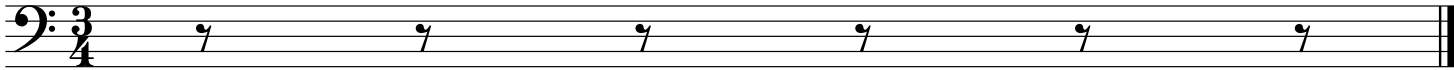




MS, US

05/15/2017



Pfennig

Introduction

Strauss

Allegro

Measures 1-5 of the introduction. The music is in bass clef with a key signature of one sharp (F#) and a 6/8 time signature. It features a rhythmic pattern of eighth and sixteenth notes, with some notes beamed together. There are accents over the first notes of measures 3 and 5.

6

Measures 6-10. Measure 6 continues the rhythmic pattern. Measures 7-10 show a melodic line with eighth and sixteenth notes, including a trill-like figure in measure 8. There are accents over the first notes of measures 7 and 9.

11

Measures 11-15. Measures 11-12 feature a rapid sixteenth-note run. Measures 13-15 continue with eighth and sixteenth notes, ending with a double bar line. There are accents over the first notes of measures 11, 13, and 15.

16

Measures 16-20. Measures 16-20 repeat the rhythmic pattern from measures 1-5. There are accents over the first notes of measures 16, 18, and 20.

21

Measures 21-25. Measures 21-25 repeat the melodic line from measures 6-10. There are accents over the first notes of measures 21, 23, and 25.

26

Measures 26-30. Measures 26-27 feature a rapid sixteenth-note run. Measures 28-30 continue with eighth and sixteenth notes, ending with a double bar line. There are accents over the first notes of measures 26, 28, and 30.

Pfennig

Walzer 1

Walzer

Strauss

1

6

10

14

18

22

26

30

Pfennig

Walzer 2

Strauss

5

5

9

9

13

13

17

Fine

21

21

25

25

29

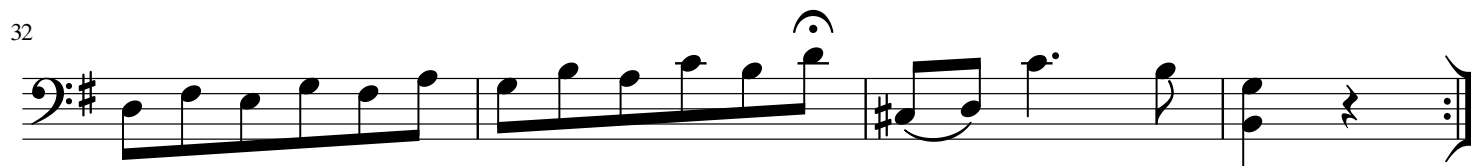
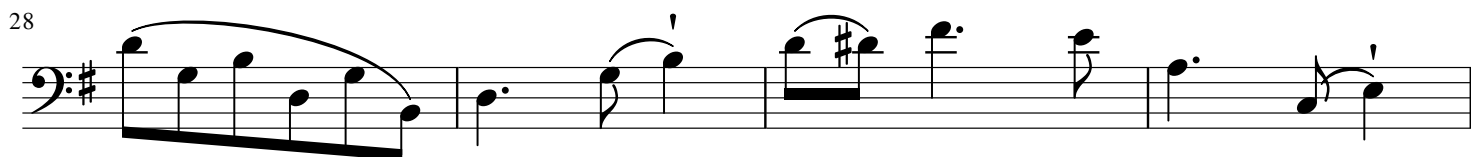
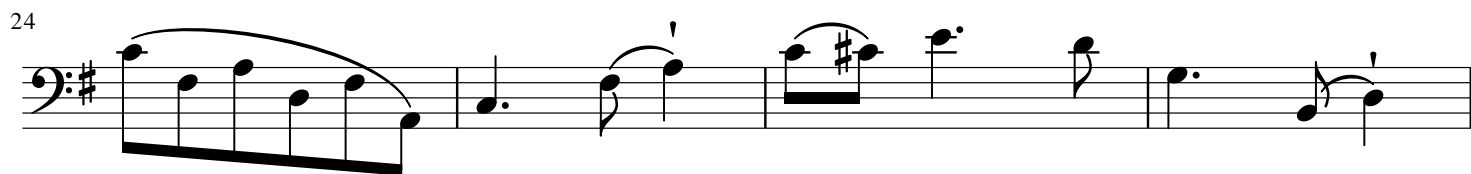
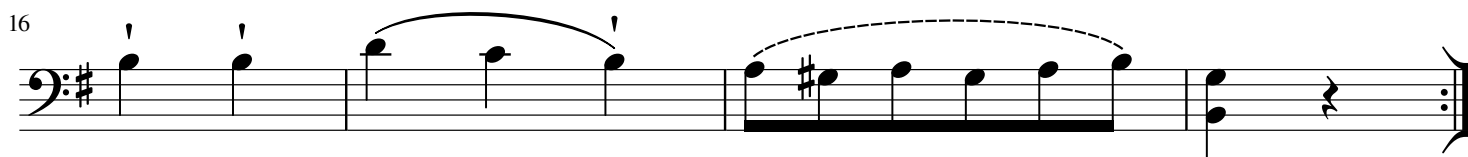
29

D.S.

Pfennig

Walzer 3

Strauss



Pfennig

Walzer 4

Strauss

1

6

10

15

19

23

27

31

Pfennig

Walzer 5

Strauss

Eingang

Musical notation for the 'Eingang' section, measures 1-4. The piece is in 3/4 time and bass clef. It begins with a series of eighth notes ascending from G2 to D3, followed by a descending eighth-note scale from D3 to G2. The final measure contains a whole note chord of G2, B2, and D3.

5 Walzer

Musical notation for the '5 Walzer' section, measures 5-8. Measure 5 is a repeat sign. The melody consists of quarter notes: G2, A2, B2, C3, B2, A2, G2. Measure 6 has a sharp sign above the G2. Measure 7 has a sharp sign above the B2. Measure 8 has a sharp sign above the G2 and a slur over the notes.

9

Musical notation for the '5 Walzer' section, measures 9-12. Measures 9 and 11 feature slurs over eighth-note pairs: (G2, A2), (B2, C3), (B2, A2), (G2, F2). Measure 10 has a sharp sign above the G2. Measure 12 has a sharp sign above the G2 and a slur over the notes.

13

Musical notation for the '5 Walzer' section, measures 13-16. Measure 13 is a repeat sign. The melody consists of quarter notes: G2, A2, B2, C3, B2, A2, G2. Measure 14 has a sharp sign above the G2. Measure 15 has a sharp sign above the B2. Measure 16 has a sharp sign above the G2 and a slur over the notes.

17

Musical notation for the '5 Walzer' section, measures 17-20. Measures 17 and 19 feature slurs over eighth-note pairs: (G2, A2), (B2, C3), (B2, A2), (G2, F2). Measure 18 has a sharp sign above the G2. Measure 20 has a sharp sign above the G2 and a slur over the notes.

21

Musical notation for the '5 Walzer' section, measures 21-24. Measure 21 is a repeat sign. The melody consists of eighth-note pairs: (G2, A2), (B2, C3), (B2, A2), (G2, F2), (G2, A2), (B2, C3), (B2, A2), (G2, F2). Measure 22 has a sharp sign above the G2. Measure 23 has a sharp sign above the B2. Measure 24 has a sharp sign above the G2.

25

Musical notation for the '5 Walzer' section, measures 25-28. Measure 25 is a repeat sign. The melody consists of eighth-note pairs: (G2, A2), (B2, C3), (B2, A2), (G2, F2), (G2, A2), (B2, C3), (B2, A2), (G2, F2). Measure 26 has a sharp sign above the G2. Measure 27 has a sharp sign above the B2. Measure 28 has a sharp sign above the G2.

29

Musical notation for the '5 Walzer' section, measures 29-32. Measure 29 is a repeat sign. The melody consists of eighth-note pairs: (G2, A2), (B2, C3), (B2, A2), (G2, F2), (G2, A2), (B2, C3), (B2, A2), (G2, F2). Measure 30 has a sharp sign above the G2. Measure 31 has a sharp sign above the B2. Measure 32 has a sharp sign above the G2.

33

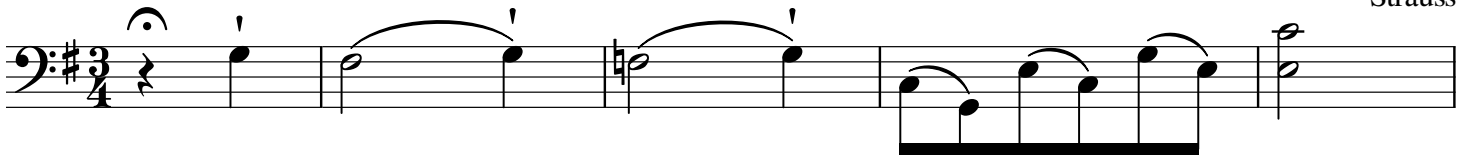
Musical notation for the '5 Walzer' section, measures 33-36. Measure 33 is a repeat sign. The melody consists of eighth-note pairs: (G2, A2), (B2, C3), (B2, A2), (G2, F2), (G2, A2), (B2, C3), (B2, A2), (G2, F2). Measure 34 has a sharp sign above the G2. Measure 35 has a sharp sign above the B2. Measure 36 has a sharp sign above the G2.

Pfennig

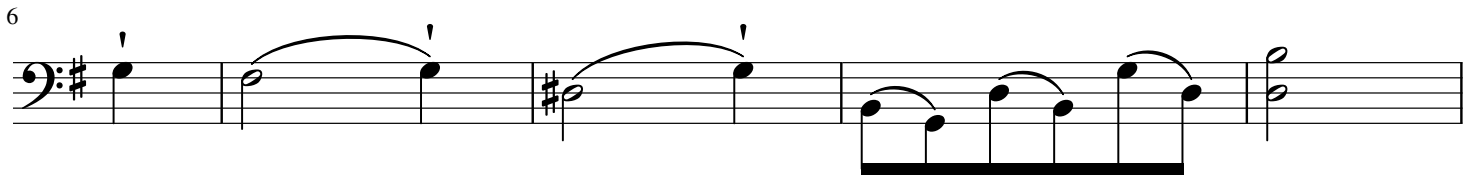
Coda

Strauss

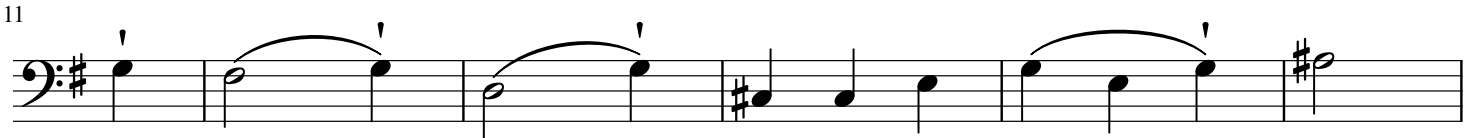
1



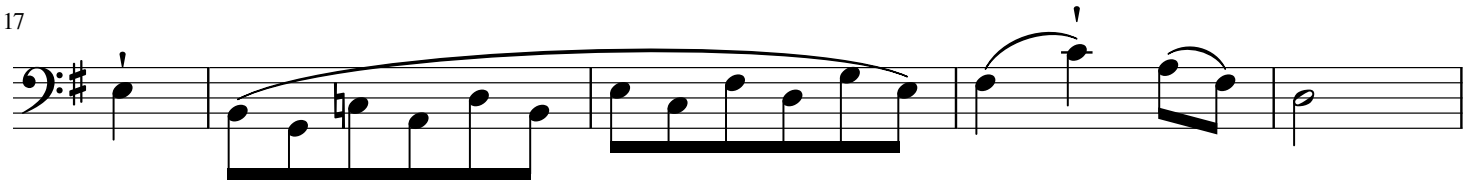
6



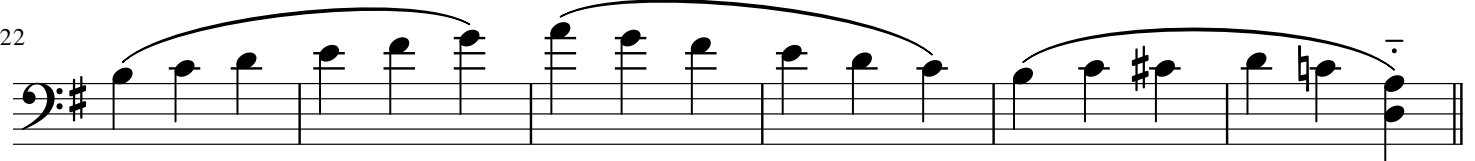
11



17



22




28



32



36



40

