



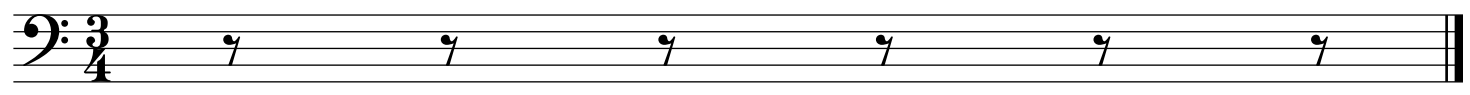
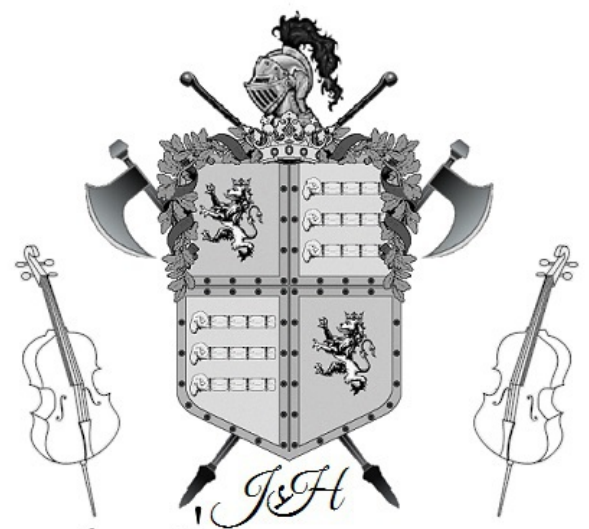
RABETZKY-MARSCH



von

Johann Strauss.

— 228. Werk —



Radetzky-Marsch

Strauss

Measures 1-4 of the bass line in G major, 4/4 time. The notation includes eighth notes, quarter notes, and a half note, with dynamic markings like *mf* and *f*.

Measures 5-7 of the bass line, featuring eighth notes and quarter notes with slurs and accents.

Measures 8-10 of the bass line, continuing the eighth-note and quarter-note pattern with slurs.

Measures 11-15 of the bass line, including eighth notes, quarter notes, and half notes with slurs and accents.

Measures 16-18 of the bass line, featuring eighth notes and quarter notes with slurs.

Measures 19-21 of the bass line, continuing the eighth-note and quarter-note pattern with slurs.

Measures 22-27 of the bass line, including eighth notes, quarter notes, and half notes with slurs and accents. The word "Fine" is written at the end of the line.

Measures 28-30 of the bass line, featuring eighth notes and quarter notes with slurs.

Measures 31-33 of the bass line, continuing the eighth-note and quarter-note pattern with slurs.

Measures 34-38 of the bass line, including eighth notes, quarter notes, and half notes with slurs and accents.

Measures 39-44 of the bass line, featuring eighth notes, quarter notes, and half notes with slurs and accents. The word "D.S." is written at the end of the line.