



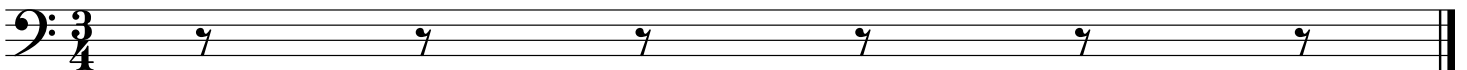
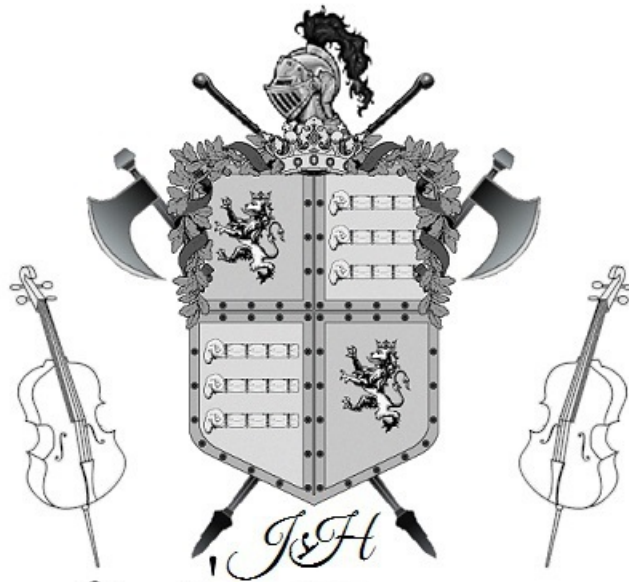
DYNAMIDEN

OP. 173

MYSTERIOUS POWERS OF MAGNETISM

WALZER

JOSEF STRAUSS



# Dynamiden

Sostenuto

Introduction

Strauss

Measures 1-5: Bass clef, key signature of one sharp (F#), 3/4 time signature. The first measure contains a dotted half note F#2. The second measure contains a dotted half note G2. The third measure contains a dotted half note A2. The fourth measure contains a dotted half note B2. The fifth measure contains a dotted half note C3.

Measures 6-10: Bass clef, key signature of one sharp (F#), 3/4 time signature. Measure 6: Dotted half note C3. Measure 7: Dotted half note D3. Measure 8: Dotted half note E3. Measure 9: Dotted half note F#3. Measure 10: Dotted half note G3.

Measures 11-15: Bass clef, key signature of one sharp (F#), 3/4 time signature. Measure 11: Dotted half note A2. Measure 12: Dotted half note B2. Measure 13: Dotted half note C3. Measure 14: Dotted half note D3. Measure 15: Dotted half note E3.

Measures 16-20: Bass clef, key signature of one sharp (F#), 3/4 time signature. Measure 16: Dotted half note F#3. Measure 17: Dotted half note G3. Measure 18: Dotted half note A3. Measure 19: Dotted half note B3. Measure 20: Dotted half note C4.

Measures 21-25: Bass clef, key signature of one sharp (F#), 3/4 time signature. Measure 21: Dotted half note D4. Measure 22: Dotted half note E4. Measure 23: Dotted half note F#4. Measure 24: Dotted half note G4. Measure 25: Dotted half note A4.

Measures 26-30: Bass clef, key signature of one sharp (F#), 3/4 time signature. Measure 26: Dotted half note B4. Measure 27: Dotted half note C5. Measure 28: Dotted half note D5. Measure 29: Dotted half note E5. Measure 30: Dotted half note F#5.

Measures 31-35: Bass clef, key signature of one sharp (F#), 3/4 time signature. Measure 31: Dotted half note G5. Measure 32: Dotted half note A5. Measure 33: Dotted half note B5. Measure 34: Dotted half note C6. Measure 35: Dotted half note D6.

Measures 36-39: Bass clef, key signature of one sharp (F#), 3/4 time signature. Measure 36: Dotted half note E6. Measure 37: Dotted half note F#6. Measure 38: Dotted half note G6. Measure 39: Dotted half note A6.

Measures 40-43: Bass clef, key signature of one sharp (F#), 3/4 time signature. Measure 40: Dotted half note B6. Measure 41: Dotted half note C7. Measure 42: Dotted half note D7. Measure 43: Dotted half note E7.

Measures 44-48: Bass clef, key signature of one sharp (F#), 3/4 time signature. Measure 44: Dotted half note F#7. Measure 45: Dotted half note G7. Measure 46: Dotted half note A7. Measure 47: Dotted half note B7. Measure 48: Dotted half note C8.

Measures 49-53: Bass clef, key signature of one sharp (F#), 3/4 time signature. Measure 49: Dotted half note D8. Measure 50: Dotted half note E8. Measure 51: Dotted half note F#8. Measure 52: Dotted half note G8. Measure 53: Dotted half note A8.

# Dynamiden

Walzer

Walzer 1

Strauss

First staff of music, bass clef, key signature of one sharp (F#), 3/4 time signature. It begins with a series of eighth and quarter notes, some beamed together, and includes a fermata over a dotted quarter note.

6

Second staff of music, starting at measure 6. It continues the melodic line with various note values and rests.

11

Third staff of music, starting at measure 11. The melody continues with similar rhythmic patterns.

16

Fourth staff of music, starting at measure 16. It features a prominent triplet of eighth notes.

21

Fifth staff of music, starting at measure 21. The melody includes a series of eighth notes and a fermata.

26

Sixth staff of music, starting at measure 26. It contains a triplet of eighth notes and a fermata.

31

Seventh staff of music, starting at measure 31. The melody continues with eighth and quarter notes.

36

Eighth staff of music, starting at measure 36. It features a triplet of eighth notes and a fermata.

41

Ninth staff of music, starting at measure 41. It includes a triplet of eighth notes and a fermata.

46

Tenth staff of music, starting at measure 46. It concludes the piece with a final cadence, including a fermata and a double bar line.

# Dynamiden

Walzer 2

Strauss

1

5

9

13

17

22

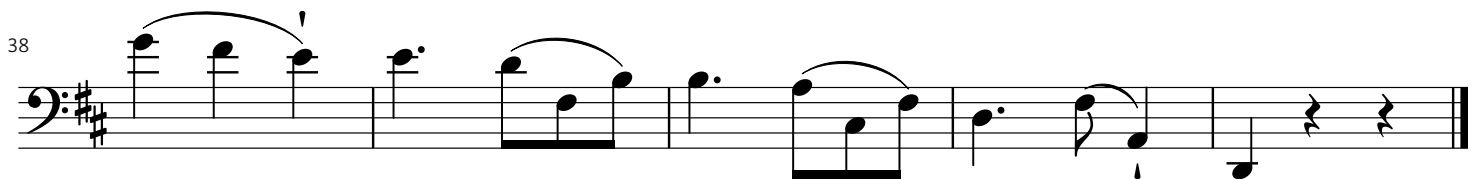
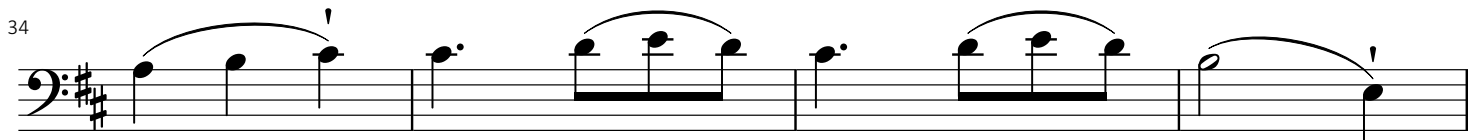
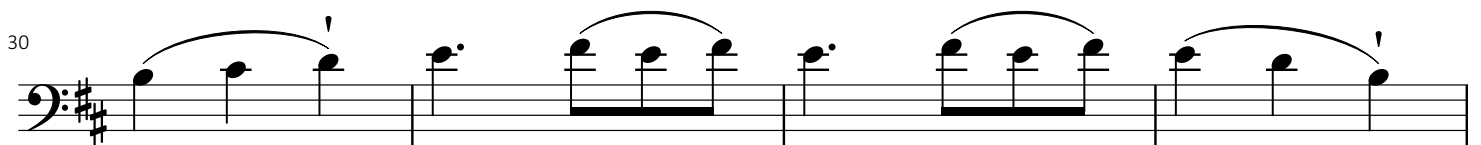
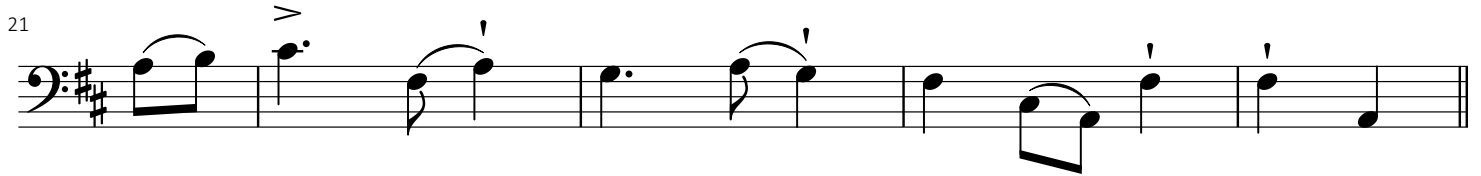
27

32

# Dynamiden

Walzer 3

Strauss



# Dynamiden

Walzer 4

Strauss

5

10

14

18

22

27

32

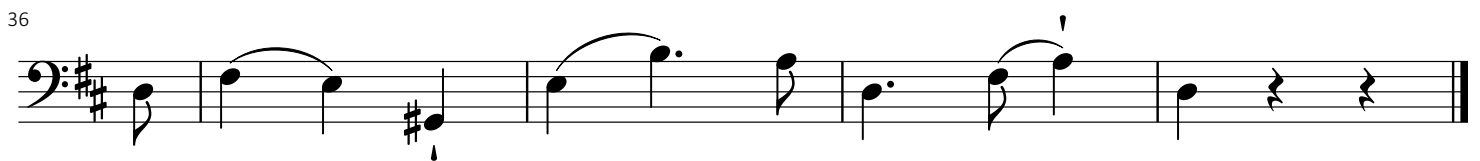
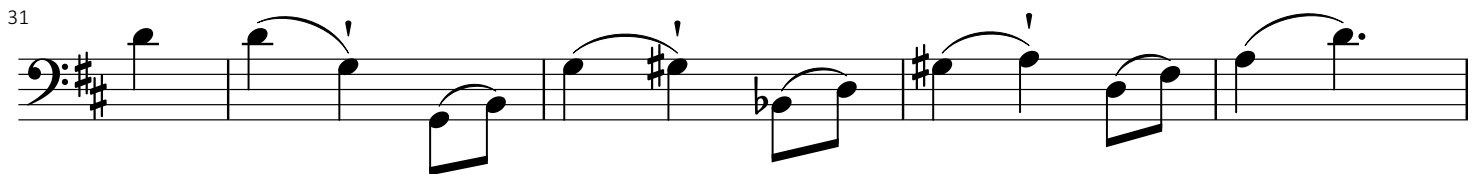
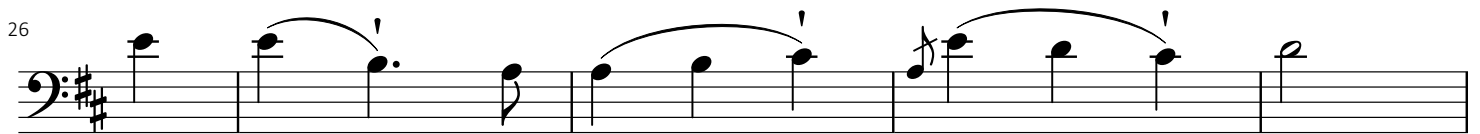
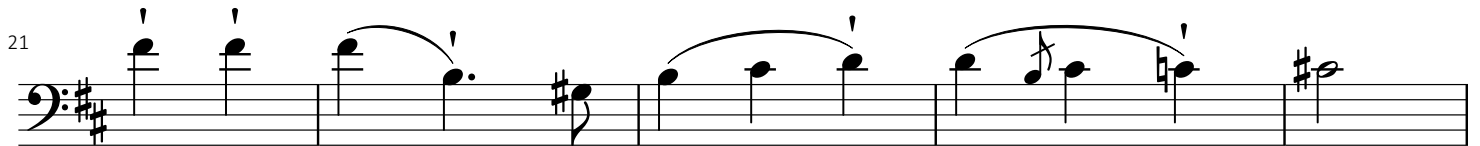
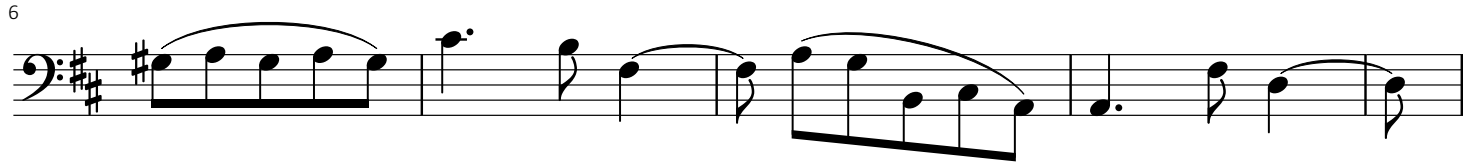
37

6

# Dynamiden

Walzer 5

Strauss



# Dynamiden

Coda

Strauss

First staff of music, measures 1-5. Bass clef, key signature of two sharps (F# and C#), 3/4 time signature. The melody consists of eighth and quarter notes with accents and slurs.

Second staff of music, measures 6-10. Continuation of the melody from the first staff.

Third staff of music, measures 11-15. Continuation of the melody.

Fourth staff of music, measures 16-20. Continuation of the melody, ending with a double bar line and a sharp sign.

Fifth staff of music, measures 21-25. Continuation of the melody.

Sixth staff of music, measures 26-30. Continuation of the melody.

Seventh staff of music, measures 31-35. Continuation of the melody.

Eighth staff of music, measures 36-40. Continuation of the melody, ending with a double bar line and a fermata.

Ninth staff of music, measures 41-45. Continuation of the melody, ending with a double bar line and a fermata.



# Dynamiden

Coda Continued

45

49

53

58

63

67

71

75

80