



Alf Meier

Arranger, Composer, Interpreter, Publisher

Germany, Indianola

About the artist

Music has been dormant with me for decades. Somehow I needed a respite after the familiar opposition of accepting a place in the conservatory (I tried out as organist and as percussionist and got accepted as percussionist). It was not until I needed music for one of my other artistic skills, film making, that it came back in force. Since then I have decided to also adapt classical music... among others because it reduces the amount of fights about authorship I have with the BMI, BMG and GEMA. If some of their nice kids have a problem with the music I can always wipe a centuries old sheet music under their noses (and yes, that happened with my interpretation of Albinoni's Adagio).

Artist page : <http://www.free-scores.com/Download-PDF-Sheet-Music-alf.htm>

About the piece



Title: Tarantella in Double Harmonic A major
Copyright: Copyright © Alf Meier
Instrumentation: Flute and Oboe
Style: Classical
Comment: Keeping with my experiments with the Double Harmonic scale I have borrowed the basic tarantella rhythm. The pdf contains the main score and parts

Alf Meier on [free-scores.com](http://www.free-scores.com)

LICENSE

This sheet music requires an authorization

:

- for public performances
- for use by teachers

Buy this license at :

<http://www.free-scores.com/license?p=aAVARtIK3V>



- listen to the audio
- share your interpretation
- comment
- pay the licence
- contact the artist

Prohibited distribution on other website.

Tarantella in double harmonic A major (Op.8)

Alf B Meier

Allegro

Oboe

Flute

Flute

10

Ob.

Fl.

Fl.

19

Ob.

Fl.

Fl.

28

Ob.
Fl.
Fl.

This system contains measures 28 through 36. The Oboe part begins with a melodic phrase in measures 28-30, followed by rests. The first Flute part has rests until measure 31, then enters with a melodic line. The second Flute part has rests until measure 31, then enters with a melodic line.

37

Ob.
Fl.
Fl.

This system contains measures 37 through 44. The Oboe part has a whole note in measure 37, followed by rests. The first Flute part has a whole note in measure 37, followed by a melodic line. The second Flute part has a whole note in measure 37, followed by rests.

45

Ob.
Fl.
Fl.

This system contains measures 45 through 53. The Oboe part has rests until measure 46, then enters with a melodic line. The first Flute part has a melodic line in measure 45, followed by rests. The second Flute part has rests throughout the system.

54

Ob.
Fl.
Fl.

This system contains measures 54 through 61. The Oboe part has a melodic phrase in measures 54-56, followed by rests. The first Flute part has rests throughout the system. The second Flute part has rests until measure 55, then enters with a melodic line.

62

Ob.
Fl.
Fl.

This system contains measures 62 through 70. The Oboe and first Flute parts are silent for the first three measures. The second Flute part begins with a rhythmic pattern of eighth notes. All parts converge to a similar melodic line in the final three measures.

71

Ob.
Fl.
Fl.

This system contains measures 71 through 79. All three parts (Oboe, Flute 1, and Flute 2) play a consistent melodic line with eighth-note patterns throughout the system.

80

Ob.
Fl.
Fl.

This system contains measures 80 through 88. It features a repeat sign in measure 84. In measure 85, the key signature changes from one flat to two flats (B-flat major to D-flat major). The melodic lines continue with eighth-note patterns.

89

Ob.
Fl.
Fl.

This system contains measures 89 through 97. The Oboe and second Flute parts play a melodic line, while the first Flute part plays a more complex, rhythmic accompaniment with sixteenth-note patterns.

97

Ob.

Fl.

Fl.

106

Ob.

dim...... *ppp*

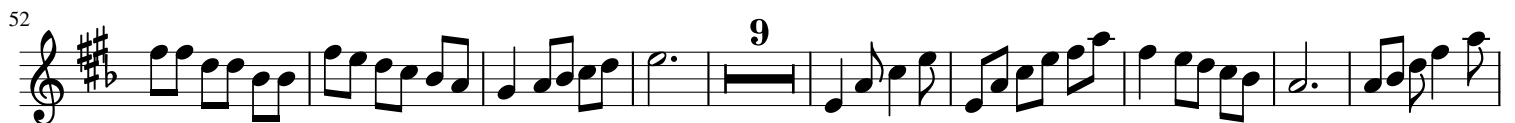
Fl.

Fl.

Oboe Tarantella in double harmonic A major (Op.8)

Alf B Meier

Allegro



dim.-----*ppp*

Flute 1 Tarantella in double harmonic A major (Op.8)

Alf B Meier

Allegro
16



Flute 2 Tarantella in double harmonic A major (Op.8)

Alf B Meier

Allegro

24

4

37

18

63

73

82

91

101

8