



Bernard Dewagtere

France, SIN LE NOBLE

Polka (Op. 39, N°10) Tchaikovsky, Piotr Ilitch

About the artist

Doctor in musicology, conductor and composer.

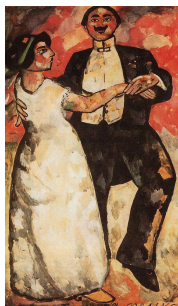
Compositions and arrangements from all eras, in all styles or musical genres and for any instrument or vocal training.

Qualification: PhD Musicology

Associate: SACEM - IPI code of the artist : 342990

Artist page : <https://www.free-scores.com/Download-PDF-Sheet-Music-bernard-dewagtere.htm>

About the piece



Title: Polka [Op. 39, N°10]
Composer: Tchaikovsky, Piotr Ilitch
Arranger: Dewagtere, Bernard
Copyright: Copyright © Bernard Dewagtere
Publisher: Dewagtere, Bernard
Instrumentation: Clarinet, Piano
Style: Romantic

Bernard Dewagtere on [free-scores.com](https://www.free-scores.com)

LICENSE

This sheet music requires an authorization
- for public performances
- for use by teachers

Buy this license at :

<https://www.free-scores.com//license?p=ahxlzx3WuS>



- listen to the audio
- share your interpretation
- comment
- pay the licence
- contact the artist

Prohibited distribution on other website.

Polka (Op. 39, N°10)

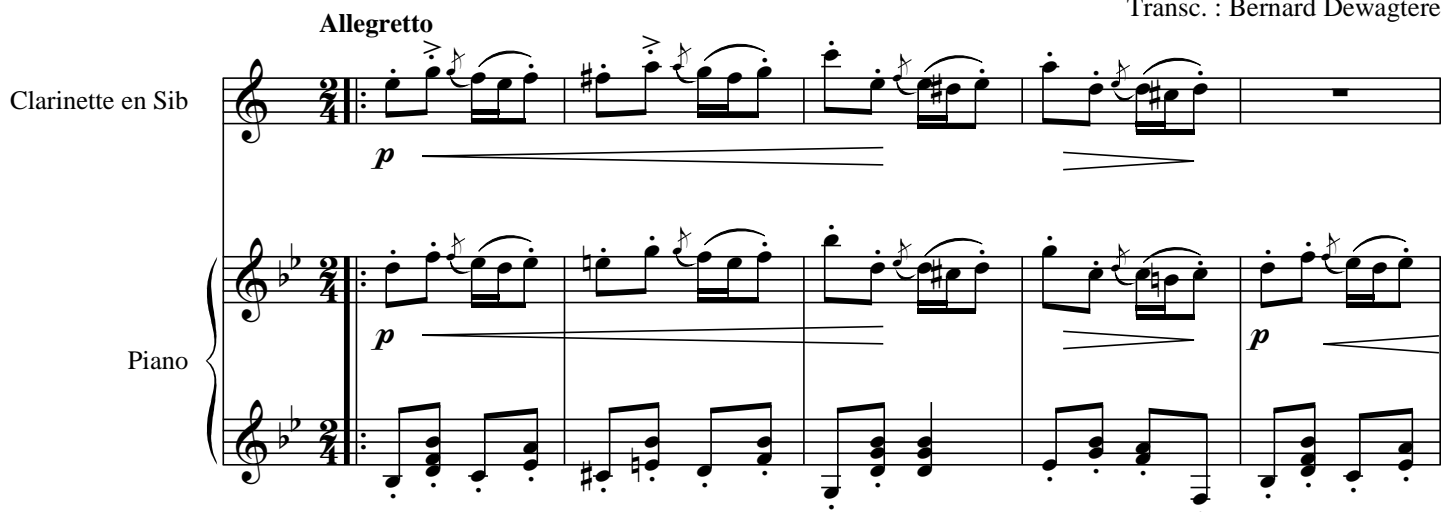
Album pour enfants – Album for the Young

Tchaïkovski, P. I. (1878)
Transc. : Bernard Dewagtere

Allegretto

Clarinette en Sib

Piano



Cl. (Sib)

6

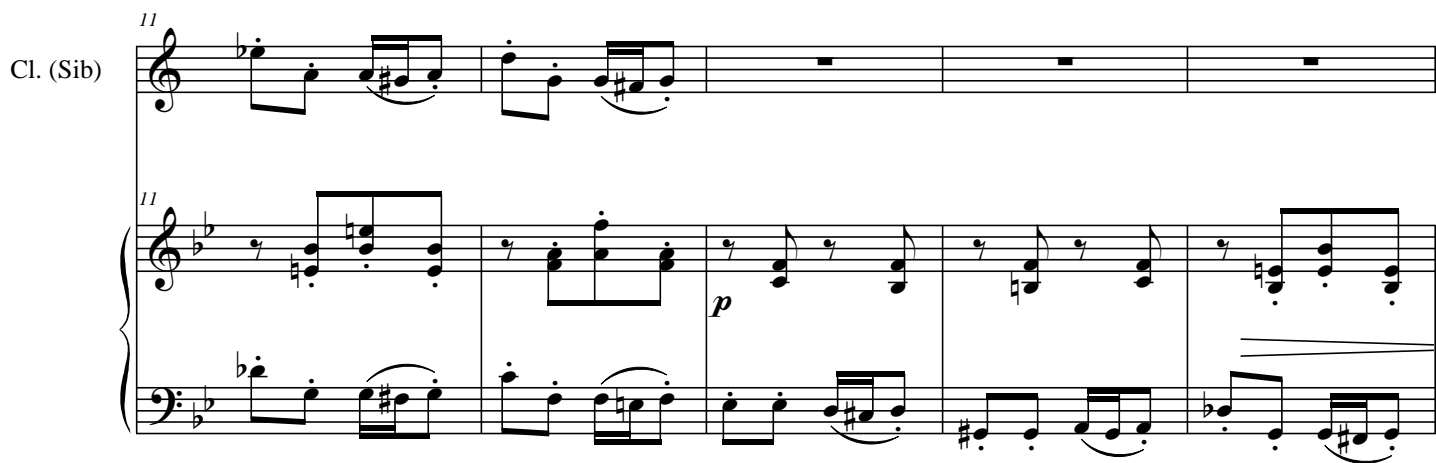
poco più *f*



Cl. (Sib)

11

p



Polka (Op. 39, N°10)

Cl. (Sib) ²/₁₆

16

cresc.

Detailed description: This system covers measures 16 to 20. The Clarinet in B-flat part (top staff) begins at measure 16 with a whole rest, followed by a melodic line of eighth notes: B-flat, A, G, F, E, D, C, B-flat, A, G, F, E, D, C, B-flat. The Piano accompaniment (bottom two staves) starts at measure 16 with a rhythmic pattern of eighth notes in the right hand and chords in the left hand. A *cresc.* (crescendo) marking is placed above the piano part in measure 19.

Cl. (Sib) ²¹

mf *f* *p*

21

f *p*

Detailed description: This system covers measures 21 to 25. The Clarinet in B-flat part (top staff) starts at measure 21 with a melodic line of eighth notes: B-flat, A, G, F, E, D, C, B-flat, A, G, F, E, D, C, B-flat. The Piano accompaniment (bottom two staves) continues with a rhythmic pattern. Dynamic markings *mf*, *f*, and *p* are placed below the clarinet staff in measures 21, 23, and 24 respectively. The piano part also has *f* and *p* markings in measures 23 and 24.

Cl. (Sib) ²⁶

26

Detailed description: This system covers measures 26 to 30. The Clarinet in B-flat part (top staff) starts at measure 26 with a melodic line of eighth notes: B-flat, A, G, F, E, D, C, B-flat, A, G, F, E, D, C, B-flat. The Piano accompaniment (bottom two staves) continues with a rhythmic pattern. The system concludes with a double bar line at the end of measure 30.