

# G.P. Telemann

---

## March Là Majesté



*Recorder Quintet*

*S,S,A,T,B*

# March - Lâ Majesté

G.P. Telemann  
(1681- 1767)

Maestoso

Musical score for Soprano I, Soprano II, Alto, Tenor, and Bass, measures 1-5. The score is in common time (C) and features a Maestoso tempo. The Soprano I part begins with a melodic line, while the other parts provide harmonic support. A rehearsal mark '5' is placed above the Soprano I staff at the end of the first system.

Musical score for Soprano I, Soprano II, Alto, Tenor, and Bass, measures 6-10. The Soprano I part continues with a melodic line, and the other parts provide harmonic support. A rehearsal mark '10' is placed above the Soprano I staff at the end of the second system.

Musical score for Soprano I, Soprano II, Alto, Tenor, and Bass, measures 11-15. The Soprano I part continues with a melodic line, and the other parts provide harmonic support. A rehearsal mark '15' is placed above the Soprano I staff at the end of the third system. Trills (tr) are indicated above the Soprano I and Soprano II parts in measures 11, 12, 14, and 15.

Là Majesté

1. 2. 20

This system contains the first 20 measures of the piece. It features five staves: a vocal line at the top, followed by three treble clef staves, and a bass clef staff at the bottom. A first ending bracket labeled '1.' covers measures 1-4, and a second ending bracket labeled '2.' covers measures 5-8. Measure numbers 20, 25, and 30 are indicated at the top right of their respective systems.

25

This system contains measures 21 through 25. It features five staves: a vocal line at the top, followed by three treble clef staves, and a bass clef staff at the bottom. Trills (tr) are marked above the notes in measures 24 and 25.

30

This system contains measures 26 through 30. It features five staves: a vocal line at the top, followed by three treble clef staves, and a bass clef staff at the bottom.

Là Majesté

The image shows a musical score for a recorder ensemble, consisting of two systems of five staves each. The first system starts at measure 35, indicated by the number '35' in the top right corner. The notation includes various rhythmic values, accidentals, and trills (marked 'tr'). The second system begins with a first ending bracket labeled '1.' and ends at measure 40, indicated by the number '40' in the top right corner. The score is written in a standard musical notation style with a treble clef and a common time signature.

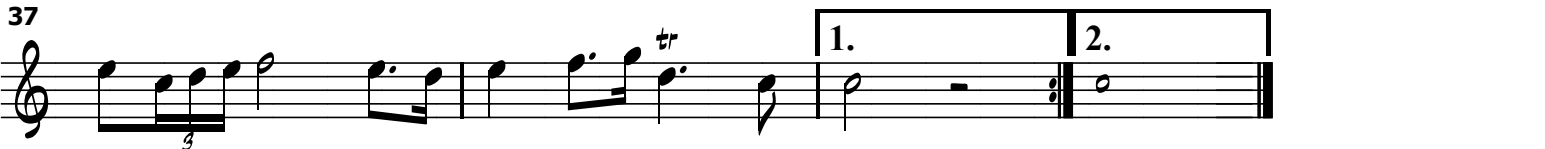
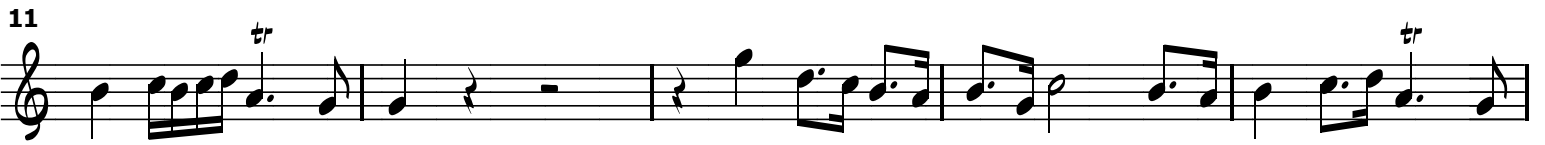
This arrangement for recorders by  
Michael Starke from an  
arrangement by Michel Rondeau  
at IMSLP.

# March - Lâ Majesté

Soprano I

G.P. Telemann  
(1681- 1767)

Maestoso



# March - Lâ Majesté

Soprano II

G.P. Telemann  
(1681- 1767)

Maestoso

6

11

16

21

26

31

36

1. 2.

1. 2.

tr

tr

tr

tr

# March - Lâ Majesté

Alto

G.P. Telemann  
(1681- 1767)

Maestoso

The image displays a musical score for the Alto part of the piece 'March - Lâ Majesté' by G.P. Telemann. The score is written in treble clef with a common time signature (C). The tempo is marked 'Maestoso'. The piece consists of 36 measures, organized into eight staves. The first staff begins with a treble clef and a common time signature. The second staff starts at measure 6, the third at measure 11, the fourth at measure 16, the fifth at measure 21, the sixth at measure 26, the seventh at measure 31, and the eighth at measure 36. The score includes various musical notations such as eighth and sixteenth notes, rests, and dynamic markings. A first ending (1.) and second ending (2.) are present at measures 16-17 and 36-37. The piece concludes with a double bar line.

# March - Lâ Majesté

Tenor  
(or Alto III)

G.P. Telemann  
(1681- 1767)

Maestoso

6

11

16 1. 2.

21

26

31

36 1. 2.



# March - Lâ Majesté

Bass

G.P. Telemann  
(1681- 1767)

Maestoso

6

11

16 1. 2.

21

26

31

36 1. 2.